

LAMPICK B0D1R985WS

LAMPICK High-Speed Ionic Hair Dryer User Manual

Model: B0D1R985WS

INTRODUCTION

Thank you for choosing the LAMPICK High-Speed Ionic Hair Dryer. This professional blow dryer is engineered with a powerful 150,000 RPM motor, advanced thermo-control, and negative ion technology to provide fast drying, reduce frizz, and protect your hair from heat damage. Its lightweight and ergonomic design, along with versatile temperature and speed settings, make it an ideal tool for achieving various hairstyles at home or while traveling. Please read this manual carefully before use to ensure safe and optimal performance.

IMPORTANT SAFETY INFORMATION

To reduce the risk of electric shock, fire, or injury, always follow basic safety precautions when using electrical appliances.

- Keep the power plug and cord away from heated surfaces.
- Do not use this appliance near water, such as bathtubs, showers, basins, or other vessels containing water.
- Always unplug the appliance immediately after use.
- Do not use the appliance if the cord or plug is damaged, or if it is not working properly.
- Keep the air inlet and outlet clear of obstructions during use.
- This appliance is equipped with overheat protection. If it overheats, it will automatically shut off. Unplug and allow it to cool before resuming use.
- Do not attempt to repair or disassemble the appliance yourself. Contact qualified service personnel for repairs.

PRODUCT OVERVIEW & KEY FEATURES

High-Speed Motor for Fast Drying

HIGH-SPEED MOTOR FOR ULTRA FAST DRYING

Motor Speed

150000 RPM

Wind Speed

25 M/s

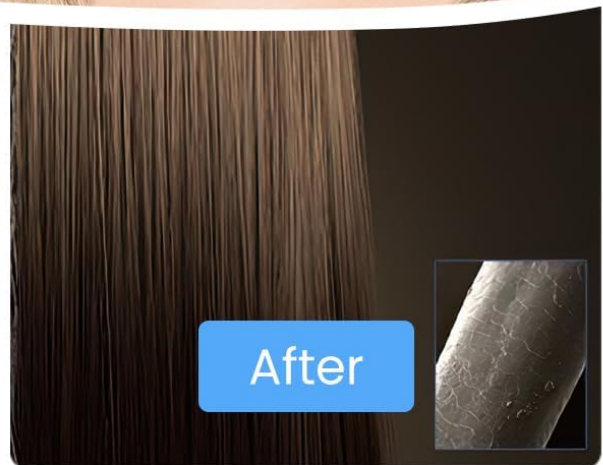
Power

1500 W

Equipped with a 150,000 RPM brushless motor, this hair dryer delivers powerful airflow (36m/s wind speed) for significantly faster drying times, reducing hair damage by relying on wind speed rather than excessive heat.

Thermo Control & Negative Ionic Technology

NEGATIVE IONS & THERMO-CONTROL, NO MORE DAMAGE AND FRIZZ

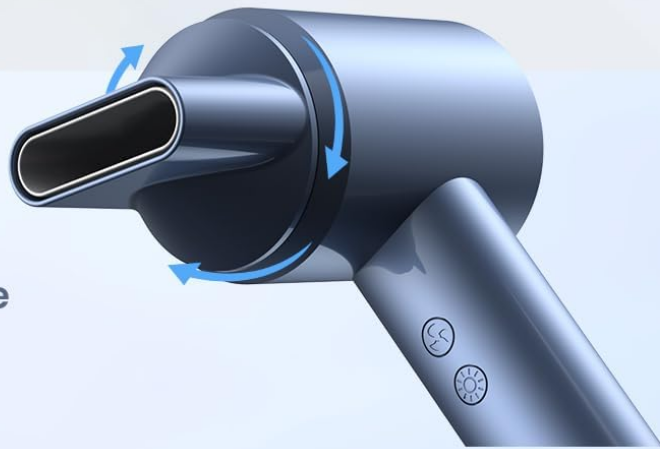


A smart microprocessor measures air temperature over 500 times per second to prevent overheating. Over 500 million negative ions are released to lock in moisture, reduce frizz, and leave hair softer, silkier, and shinier.

Versatile Temperature & Speed Settings

FLEXIBLE AND ADAPTABLE, EASY TO OPERATE

360° Rotating
Smoothing Nozzle



3 Wind Speed Setting

Low, Medium, High

5 Temperature Setting

Room Temperature/140°F/160°F/190°F/
Hot and Cold Air Cycle Mode

**Switch
Cool Air Mode**



Features 5 temperature settings (Room temperature, Cool, Warm, Hot, Hot and Cold Air Cycle Mode) and 3 speed settings (Low, Medium, High) for customized drying and styling options to suit all hair types and desired looks.

Ergonomic & Compact Design

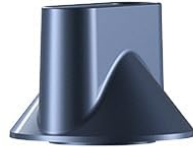
**COMPACT DESIGN, ULTRA
LIGHTWEIGHT, IDEAL FOR TRAVEL**



Weighing only 0.9 lb, this lightweight and portable hair dryer is perfect for both home and travel. Its ergonomic design ensures a comfortable grip and simple operation with intuitive buttons.

Magnetic Nozzle & Removable Filter

Meet All Your Styling Needs



Magnetic Smoothing Nozzle

for smoothing hair, hair styling



Without Nozzle

for drying hair, supple caring



The 360° rotating magnetic nozzle allows for precise airflow and easy attachment/removal. The removable filter provides optimal protection against hair being sucked into the dryer and facilitates effortless cleaning.

SETUP GUIDE

1. **Unboxing:** Carefully remove all components from the packaging. Ensure all parts, including the hair dryer unit and magnetic nozzle, are present and undamaged.
2. **Attach Nozzle:** The magnetic smoothing nozzle can be easily attached to the front of the hair dryer. Simply align it with the air outlet and it will snap into place securely. The nozzle can be rotated 360° to direct airflow as needed.
3. **Power Connection:** Plug the power cord into a standard 120V AC electrical outlet. Ensure your hands are dry before handling the plug.

4. **Initial Check:** Before first use, ensure the air inlet filter at the bottom of the handle is clean and properly installed.

OPERATING INSTRUCTIONS

Familiarize yourself with the controls for optimal hair drying and styling.

Controls Overview



- **Power Button:** Located on the handle, press to turn the dryer ON/OFF.
- **Wind Speed Setting Button:** Adjusts airflow intensity (Low, Medium, High). Indicated by blue LED lights.
- **Temperature Setting Button:** Controls heat level (Room temperature, Cool, Warm, Hot). Indicated by red LED lights. Press and hold for 1 second to activate Hot and Cold Air Cycle Mode.
- **Cool Air Mode Button:** Provides a burst of cool air to set your style.

Drying & Styling Tips

- For fast drying, use a higher wind speed and a warm or hot temperature setting.
- For styling, lower the wind speed and use gentle heat. The magnetic nozzle helps to concentrate airflow for precise styling.
- To finish your style and add shine, use the Cool Air Mode.
- Always hold the dryer at a comfortable distance from your hair to allow for proper airflow and prevent direct heat exposure.

MAINTENANCE

Regular maintenance ensures the longevity and optimal performance of your hair dryer.

- **Cleaning the Air Filter:** The removable filter at the bottom of the handle should be cleaned regularly to prevent dust and hair from entering the motor.
 - a. Unplug the hair dryer from the power outlet.
 - b. Gently twist or pull off the filter cover (refer to product diagram if unsure).
 - c. Remove any accumulated dust or lint from the filter screen using a soft brush or cloth.
 - d. Reattach the filter cover securely.
- **Exterior Cleaning:** Wipe the exterior of the hair dryer with a soft, damp cloth. Do not use abrasive cleaners or solvents.
- **Storage:** Store the hair dryer in a cool, dry place when not in use. Do not wrap the power cord tightly around the appliance, as this can damage the cord.

TROUBLESHOOTING

If you encounter any issues with your hair dryer, please refer to the following common problems and solutions:

Problem	Possible Cause	Solution
Hair dryer does not turn on.	No power, tripped circuit breaker, or overheat protection activated.	Check power outlet. Reset circuit breaker if necessary. Unplug the dryer and let it cool down for 10-15 minutes before plugging it back in.
Weak airflow.	Blocked air inlet filter.	Clean the removable air filter as described in the Maintenance section.
Unusual noise or smell.	Internal issue or foreign object.	Immediately unplug the dryer. Do not use it. Contact customer support for assistance.
Hair dryer gets too hot.	Overheat protection may be about to activate or is faulty.	Ensure air filter is clean. Use a lower temperature setting. If problem persists, contact customer support.

SPECIFICATIONS

Feature	Detail
Product Dimensions	3.74 x 2.75 x 11.02 inches
Weight	15.68 ounces (approx. 0.98 lbs)
Motor Speed	150,000 RPM
Wind Speed	36 m/s
Wattage	1500 watts
Voltage	120 volts
Temperature Settings	5 (Room Temp, Cool, Warm, Hot, Hot & Cold Air Cycle)
Speed Settings	3 (Low, Medium, High)
Ionic Technology	500+ million negative ions
Material	Acrylonitrile Butadiene Styrene

WARRANTY & SUPPORT

LAMPICK is committed to providing high-quality products and excellent customer service.

- **2-Year Warranty:** Enjoy a 2-year return or replacement policy for your product.
- **30-Day Return Policy:** We offer a 30-day no-reason return policy for your peace of mind.
- **Lifetime Support:** Benefit from lifetime support and satisfied solutions for any product-related inquiries.
- **Customer Service:** For quick after-sales service, please contact us via email or phone. Refer to the product packaging or our official website for contact details.

