



Manuals.plus /

› ACEMAGIC /

› ACEMAGIC S1 Mini PC User Manual

ACEMAGIC S1

ACEMAGIC S1 Mini PC User Manual

Model: S1 | Brand: ACEMAGIC

1. INTRODUCTION

This manual provides instructions for the ACEMAGIC S1 Mini PC. It covers the physical components, initial setup, operational procedures, maintenance guidelines, and technical specifications. The ACEMAGIC S1 Mini PC features an Alder Lake N97 CPU, 16GB RAM, and a 512GB M.2 SSD. It supports 4K dual display output, WiFi 6, Bluetooth 5.2, and includes dual Gigabit Ethernet ports. A unique LCD display provides real-time system monitoring, and the device features a magnetic detachable cover for memory module access.

16GB RAM & 1000GB M.2 NVMe SSD

Daily operation and storage without burden



Image 1.1: The ACEMAGIC S1 Mini PC in a typical multi-monitor work environment, demonstrating its capability for various applications.

2. WHAT'S IN THE BOX

Verify that all the following components are included in your package:

- 1 x ACEMAGIC S1 Mini PC
- 1 x HDMI cable
- 1 x Power Adapter
- 1 x User Manual (this document)
- 1 x Base Bracket

3. PRODUCT OVERVIEW

The ACEMAGIC S1 Mini PC is designed for compact and efficient computing. It features a range of ports for connectivity and an integrated LCD display for system information.



Image 3.1: Front view of the ACEMAGIC S1 Mini PC displaying system metrics on its LCD, alongside a rear view highlighting the available ports.

3.1 Front Panel

- **LCD Display:** Shows real-time system information such as CPU temperature, memory load, CPU power, CPU load, and fan speed.
- **RGB Lighting:** Customizable lighting element.

3.2 Rear Panel (Ports)

- **2 x USB 2.0 Ports:** For connecting peripherals.
- **2 x USB 3.0 Ports:** For high-speed data transfer with compatible devices.
- **2 x HDMI 2.0 Ports:** For connecting to displays, supporting up to 4K@60Hz.
- **2 x Gigabit Ethernet Ports (LAN):** For wired network connectivity.
- **Power Input (DC IN):** For connecting the power adapter.
- **Audio Jack (AUX):** For audio output.

4. SETUP INSTRUCTIONS

Follow these steps for the initial setup of your ACEMAGIC S1 Mini PC.

1. **Connect Peripherals:** Connect your keyboard, mouse, and other USB devices to the available USB ports.
2. **Connect Display:** Use the provided HDMI cable to connect the Mini PC to your monitor or TV. If using two displays, connect the second display to the other HDMI port.
3. **Connect to Network (Optional):** For wired internet access, connect an Ethernet cable from your router or modem to one of the Gigabit Ethernet ports. For wireless access, ensure your WiFi network is available.
4. **Connect Power:** Plug the power adapter into the DC IN port on the Mini PC, then plug the adapter into a power outlet.
5. **Power On:** Press the power button located on the device. The system will boot up.

5. OPERATING INSTRUCTIONS

5.1 Power On/Off

- **Power On:** Press the power button once.
- **Power Off:** Access the operating system's shutdown menu or press and hold the power button for approximately 5 seconds to force a shutdown (use only when necessary).

5.2 LCD Display Customization

The integrated LCD display provides real-time monitoring of system performance. You can customize its appearance and the information displayed.

PERSONALIZED LCD SCREEN

DIY your exclusive mini pc screen display

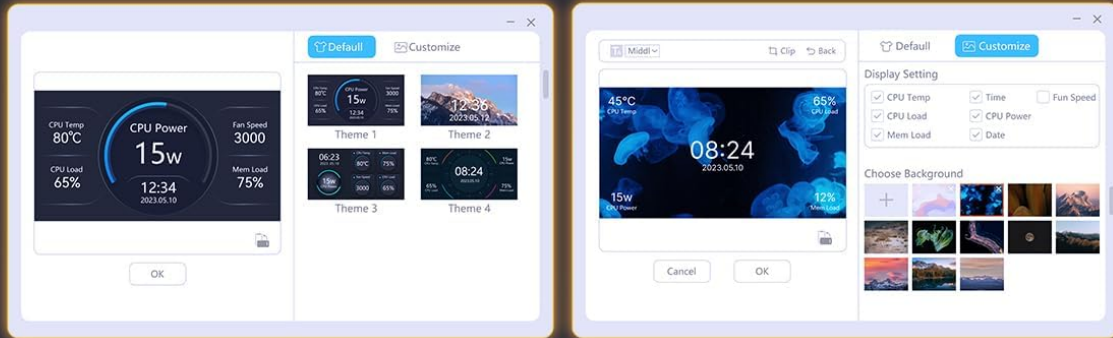


Image 5.1: Examples of the software interface for customizing the LCD display, including theme selection and data display options.

To customize the LCD display, use the dedicated software application pre-installed on the Mini PC. This application allows you to:

- Monitor CPU temperature, memory usage, CPU power, CPU load, and fan speed.
- Change the background image or theme of the display.
- Select which metrics are shown on the screen.

5.3 Dual Display Setup

The Mini PC supports connecting two external displays simultaneously, enabling a multi-tasking environment.

EXPERIENCE EVERY DETAIL

Dual Screen-Enjoy 4K@60Hz UHD Visual Feast

2x HDMI 2.0

4K
4K UHD



Image 5.2: A setup demonstrating the ACEMAGIC S1 Mini PC driving two 4K monitors, suitable for enhanced productivity. To set up dual displays:

1. Connect both monitors to the HDMI ports on the rear of the Mini PC.
2. Power on the Mini PC and both monitors.
3. Once the operating system loads, right-click on the desktop and select 'Display settings' (Windows) or equivalent.
4. Configure the display arrangement (extend, duplicate, or show only on one display) as desired.

6. STORAGE AND MEMORY UPGRADE

The ACEMAGIC S1 Mini PC features a magnetic detachable cover, allowing for convenient access to

upgrade the memory (RAM) and storage (SSD).



Image 6.1: An exploded view of the ACEMAGIC S1 Mini PC's interior, illustrating the accessible M.2 slots for SSDs (SATA and NVMe) and the SO-DIMM DDR4 RAM slot.

6.1 Accessing Internal Components

1. Ensure the Mini PC is powered off and disconnected from the power adapter.
2. Gently detach the magnetic side cover. No tools are required.

6.2 RAM Upgrade

The Mini PC supports single-channel DDR4 SO-DIMM RAM. It comes with 16GB installed.

- To replace the RAM module, gently push the retaining clips outwards to release the existing module.

- Insert the new SO-DIMM DDR4 module into the slot at an angle, then push down until the clips secure it.

6.3 SSD Upgrade/Expansion

The Mini PC has two M.2 slots:

- One M.2 slot supports SATA SSDs.
- The other M.2 slot is PCIE/SATA adaptive.

The system comes with a 512GB M.2 NVMe SSD. Storage can be expanded up to 2TB.

- To install or replace an M.2 SSD, align the notch on the SSD with the key in the M.2 slot.
- Gently push the SSD into the slot, then secure it with the provided screw (if applicable).

7. CONNECTIVITY

The ACEMAGIC S1 Mini PC offers various connectivity options for networking and peripherals.

New Fast Experience Dual Gigabit Lan WiFi 6 Speed



Image 7.1: Visual representation of the Mini PC's advanced connectivity features, including dual Gigabit LAN, WiFi 6, and Bluetooth 5.2.

7.1 Wireless Connectivity

- **WiFi 6 (802.11ax):** Provides high-speed wireless internet access.
- **Bluetooth 5.2:** For connecting wireless peripherals such as keyboards, mice, and audio devices.

7.2 Wired Connectivity

- **Dual Gigabit Ethernet Ports:** For stable and high-speed wired network connections.
- **USB Ports:** Two USB 2.0 and two USB 3.0 ports for various wired peripherals.

8. MAINTENANCE

Proper maintenance ensures the longevity and optimal performance of your Mini PC.

- **Cleaning:** Use a soft, dry cloth to clean the exterior of the device. Avoid liquid cleaners. For internal dust, use compressed air sparingly and ensure the device is powered off.
- **Ventilation:** Ensure the ventilation openings are not obstructed to allow for proper airflow and heat dissipation. The Mini PC includes an ultra-quiet fan and heat sink for cooling.
- **Software Updates:** Regularly update your operating system and drivers to maintain security and performance.
- **Placement:** Place the Mini PC on a stable, flat surface. The included base bracket allows for vertical or flat placement.

9. TROUBLESHOOTING

This section addresses common issues you might encounter with your ACEMAGIC S1 Mini PC.

Problem	Possible Solution
No power/System does not turn on	<ul style="list-style-type: none"> • Ensure the power adapter is securely connected to both the Mini PC and a working power outlet. • Verify the power outlet is functional. • Press the power button firmly.
No display output	<ul style="list-style-type: none"> • Check that the HDMI cable is securely connected to both the Mini PC and the monitor. • Ensure the monitor is powered on and set to the correct input source (HDMI). • Try a different HDMI cable or monitor if available.
No internet connection (wired)	<ul style="list-style-type: none"> • Verify the Ethernet cable is properly connected to both the Mini PC and the router/modem. • Check the status lights on the Ethernet port and router. • Restart your router/modem.
No internet connection (wireless)	<ul style="list-style-type: none"> • Ensure WiFi is enabled in the operating system settings. • Check that you are connected to the correct WiFi network and have entered the password correctly. • Restart your router/modem.
Bluetooth device not connecting	<ul style="list-style-type: none"> • Ensure Bluetooth is enabled in the operating system settings. • Put the Bluetooth device into pairing mode. • Remove and re-add the device in Bluetooth settings.
System slow or unresponsive	<ul style="list-style-type: none"> • Close unnecessary applications. • Check for sufficient free storage space. • Ensure the Mini PC is well-ventilated and not overheating. • Restart the system.

10. SPECIFICATIONS

Detailed technical specifications for the ACEMAGIC S1 Mini PC.

Feature	Detail
Processor	12th Gen Intel Alder Lake-N97 (4C/4T, up to 3.6GHz, 25W TDP)
Graphics	Intel UHD Graphics (Max Dynamic Frequency 1.20 GHz)
RAM	16GB DDR4 SO-DIMM (Single Channel)
Storage	512GB M.2 NVMe SSD (Expandable up to 2TB) Two M.2 slots: one SATA, one PCIE/SATA adaptive
Video Output	2 x HDMI 2.0 (Supports 4K@60Hz Dual Display)
USB Ports	2 x USB 3.0, 2 x USB 2.0
Network	2 x Gigabit Ethernet Ports, WiFi 6 (802.11ax)
Bluetooth	Bluetooth 5.2
Operating System	OS (Pre-installed, license may be required)
Special Features	Integrated LCD Display, RGB Lighting, Magnetic Detachable Cover, Adjustable Vertical Stand, Wake On LAN, PXE Boot, RTC Wake, Auto Power On
Dimensions (LxWxH)	4.87 x 5.03 x 1.61 inches (12.37 x 12.78 x 4.09 cm)
Weight	2.09 pounds (0.95 kg)
Color	Black

11. WARRANTY AND SUPPORT

For warranty information and technical support, please refer to the official ACEMAGIC website or contact their customer service. Details regarding specific warranty periods and support channels are typically provided with your purchase documentation or on the manufacturer's official support pages.

ACEMAGIC Official Website: www.acemagic.com (Note: This is a placeholder URL. Please refer to your product packaging or official documentation for the correct support website.)