

[Manuals.plus](#) /

> [Inefala](#) /

> Inefala 4+64GB Android Car Stereo for Hyundai Elantra (2011-2013) - User Manual

Inefala RM

Inefala 4+64GB Android Car Stereo User Manual

Model: RM | For Hyundai Elantra (2011-2013)

1. INTRODUCTION

This manual provides detailed instructions for the installation, operation, and maintenance of your Inefala 4+64GB Android Car Stereo. This unit is specifically designed for Hyundai Elantra models from 2011 to 2013, offering an upgraded in-dash experience with advanced features.

2. PACKAGE CONTENTS

Verify that all items listed below are included in your package. If any components are missing or damaged, please contact customer support.

- Inefala Android Radio for Hyundai Elantra
- Power Cable
- RCA Harness
- GPS Antenna
- AHD Backup Camera
- Rear Camera Input Cable
- External Microphone
- Dual USB Cable
- Installation Tool & Accessories

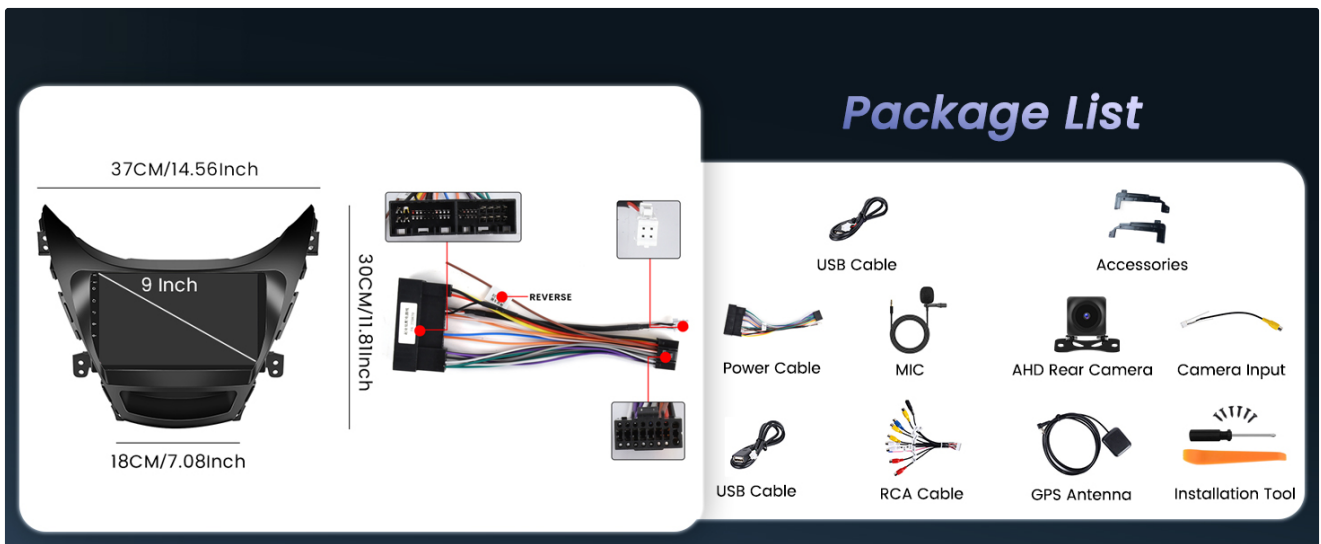


Image: Overview of included components and main unit dimensions.

3. INSTALLATION

Proper installation is crucial for optimal performance. It is recommended to have this unit installed by a professional if you are unfamiliar with car audio systems.

3.1 Compatibility Check

This unit is designed for Hyundai Elantra models from 2011, 2012, and 2013. The provided wiring harness does **not** support original cars equipped with an amplifier. Please verify the power cable port on your vehicle matches the provided cable before proceeding.

For Hyundai Elantra (2011–2013)



Before Installation



After Installation



Apple Carplay



Android Auto



Mirror Link



GPS Navigation



WiFi Function



HD 1280 x 768



SWC



DSP Sound



FM/RDS Radio



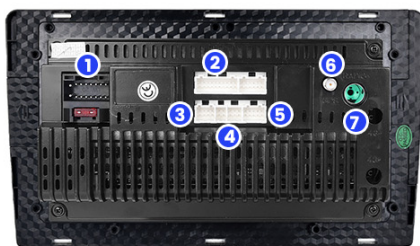
Bluetooth

Image: Comparison of the dashboard before and after installing the Inefala Android Car Stereo.

3.2 Wiring Connections

Refer to the wiring diagrams for correct connections. Ensure all connections are secure to prevent malfunctions.

Port Details



- | | |
|---------------------------|-----------------|
| 1.Power Cable | 5.Camera Input |
| 2.RCA Cable | 6.Radio Antenna |
| 3.8Pin CANBUS Serial Port | 7.GPS Antenna |
| 4.USB Cable | |



- 1.RCA OUT FR
- 2.AUX R IN
- 3.AMP CTRL
- 4.AUX L IN
- 5.RCA OUT FL
- 6.CVBS-IN-1
- 7.VIDEO OUT
- 8.SUB WOOFER
- 9.F CAM
- 10.MIC

Image: Detailed view of the stereo's rear ports and corresponding wiring harness connections.

3.3 Backup Camera Wiring

The reversing input cable must be plugged in even if the reversing camera is not used, as WiFi and Bluetooth signals may be affected otherwise.

1. Connect Cable 1 and Cable 5 to the positive pole of the car reversing light cable.
2. Connect Cable 2 to the negative pole of the car reversing light cable.
3. Connect Cable 3 and Cable 4 to the reverse trigger wire of the power cable (labeled "Reverse/Back"). This connection is not needed if your vehicle does not have this wire. Pull it out and connect it if the last step does not work.

Reversing Camera Wiring

Tip: The reversing input must be plugged in even when the reversing camera is not used. Otherwise, your WiFi and Bluetooth signals will be affected!





Wide Angle



720P



IP69 Waterproof



Night Vision

How to Connect the Backup Camera?

Cable 1 and cable 5: Need connect the positive pole of the car reversing light cable.

Cable 2 : Connect the negative pole of the car reversing light cable.

Cable 3 and Cable 4 : Connects to the reverse trigger wire of power cable (labeled "Reverse/Back") . No need to connect if without this wire. Pull it out and connect it if last step doesn't work.



Image: Diagram illustrating the connections for the AHD backup camera.

3.4 Pre-Installation Test

Before final installation, perform a quick test:

1. Combine the red and yellow wires of the car stereo and connect them to the positive pole of the 12V battery.
2. Connect the black wire to the negative pole of the battery.
3. After 2 seconds, check if the car stereo screen lights up. If it does, the stereo is functioning normally. If the screen does not light up, recheck the installation procedure.

4. OPERATING INSTRUCTIONS

This section covers the basic operation and features of your Android car stereo.

4.1 User Interface and Customization

The system features a fully capacitive touchscreen for easy operation. You can customize the appearance of your stereo.

- **Backgrounds:** Touch the color circle in the lower left corner of the screen to switch between 19 available backgrounds.
- **Desktop Themes:** Long press the main interface to switch between 59 desktop themes.

19 Wallpaper Options



59 Desktop Themes



Image: Examples of the 19 wallpaper options and 59 desktop themes available for customization.

4.2 CarPlay, Android Auto, and Mirror Link

Connect your smartphone for enhanced functionality, including navigation, music, calls, and messages.

Wireless Connection (CarPlay/Android Auto)

1. Turn on your phone's Bluetooth, search for the car stereo's Bluetooth, and pair it.
2. Click the "CPLink" / "Android Auto" app on the car stereo. (If your phone is an Android device, you may need to install the "Android Auto" app in advance).
3. Wait for a few seconds, and the CarPlay/Android Auto wireless connection will happen automatically.
4. After the first successful connection, it will start automatically. You can then use voice assistant, navigation, music playback, and make/receive phone calls.

Wired Connection (CarPlay/Android Auto)

1. Connect your iOS / Android cell phone via the original USB cable.
2. Click the "CPLink" / "Android Auto" app on the car stereo. (For Android phones, you may need to install the "Android Auto" app in advance).
3. Wait for a few seconds, and the CarPlay/Android Auto wired connection will happen automatically.

Note: For some Samsung and Huawei phones, Android Auto and Mirror Link functionality may not be fully supported. The phone needs to support Google Services and have the "Android Auto" app installed.

Wireless Carplay / Android Auto / Mirror Link

Hotspot Connection

USB/Bluetooth & Hotspot

USB/Bluetooth Connection

Wireless Apple Carplay

USB/Bluetooth Connection

Wireless Android Auto

Image: Visual representation of wireless CarPlay, Android Auto, and Mirror Link connections.

Wireless Carplay & Android Auto



Wireless Connection:

1. Turn on your phone's Bluetooth, search for the car stereo's Bluetooth and pair it.
2. Click the "CPLink"/"Android Auto" app on the car stereo. (If your cell phone is the Android system, you need to install the "Android Auto" app in advance).
3. Wait for a few seconds and the CarPlay/Android Auto wireless connection will happen automatically.
4. After the first successful connection, simply turn on Bluetooth, and it will start automatically. And you can easily use functions like voice assistant, navigate, play music and make/receive phone calls.

Wired Connection:

1. Connect your iOS /Android cell phone via original USB cable
2. Click the "CPLink"/"Android Auto" app on the car stereo. (If your cell phone is the Android system, you need to install the "Android Auto" app in advance).
3. Wait for a few seconds and the CarPlay/Android Auto wired connection will happen automatically. And you can easily use functions like voice assistant, navigate, play music and make/receive phone calls.

Note: For Huawei and some Samsung phones, these are not supported. The phone needs to support Google Services and install the "Android Auto" app.

Image: Display showing the integration of Apple CarPlay and Android Auto on the stereo screen.

Phone Mirror Link

Support System

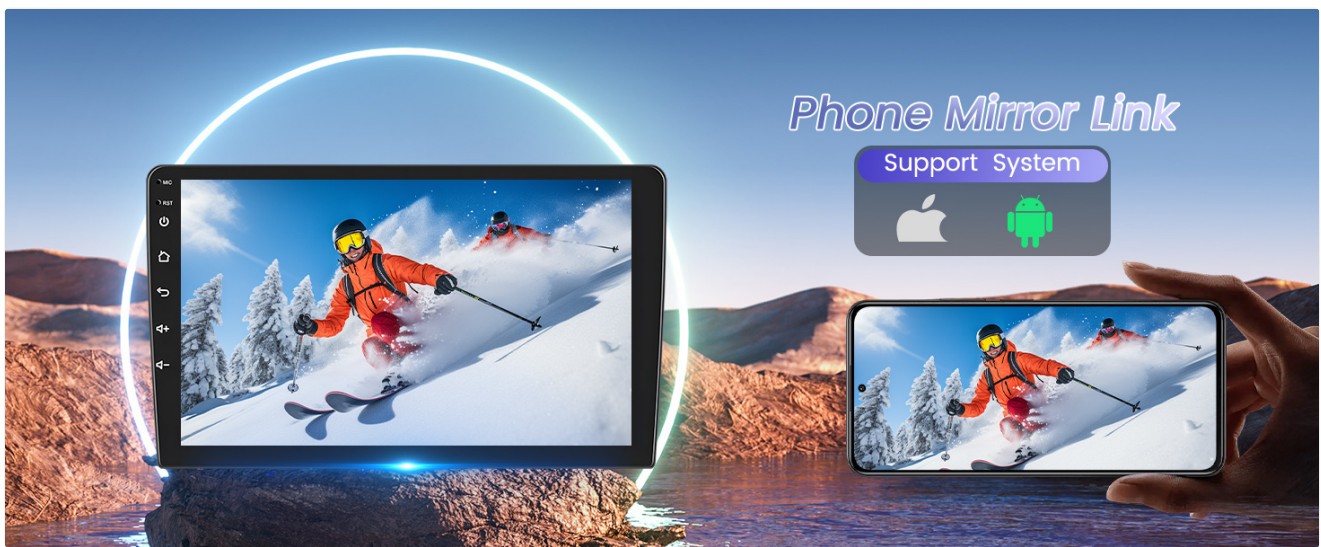


Image: Illustration of the Mirror Link feature, displaying phone content on the car stereo.

4.3 GPS Navigation and WiFi Hotspot

The head unit includes a built-in GPS module. Navigation software like Waze and free offline maps can be utilized. Connect to WiFi or a mobile hotspot for online maps and to download apps from the Play Store (e.g., YouTube, TikTok).

GPS Navigation

Navigation software such as Waze and free offline maps can be used



WiFi or Hotspot

Download apps from the Play Store such as YouTube, Tiktok, etc

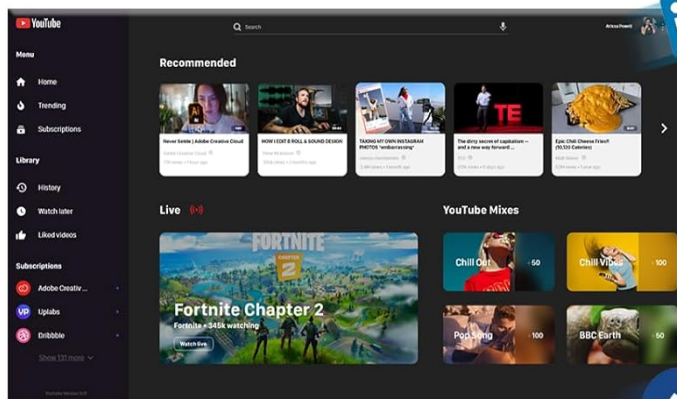


Image: Display of GPS navigation and available apps via WiFi/hotspot connection.

4.4 Hands-free Bluetooth & FM/RDS Radio

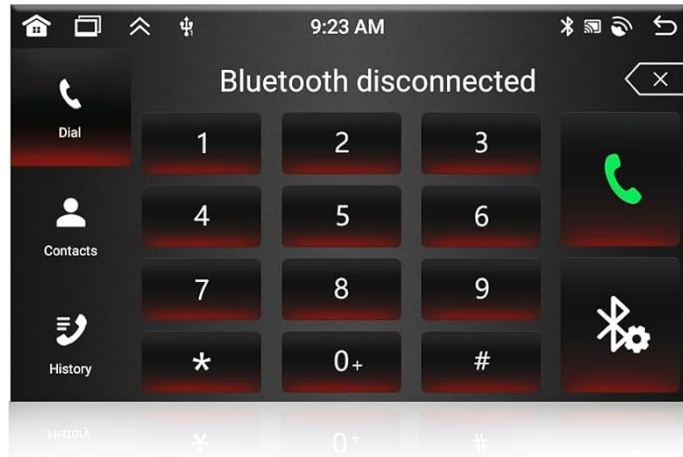
The car stereo supports hands-free calling, phone book download, and music playback via Bluetooth. The built-in microphone ensures clear communication. The stable FM/RDS radio allows you to preset 18 stations and provides channel broadcasts, weather forecasts, and real-time road conditions.

Hands-free Bluetooth

Supports hands-free calling, phonebook downloads and music playback



- BT Call
- BT Music
- Phonebook



FM/RDS Radio

Channel broadcasts, weather forecasts and real-time traffic conditions are available



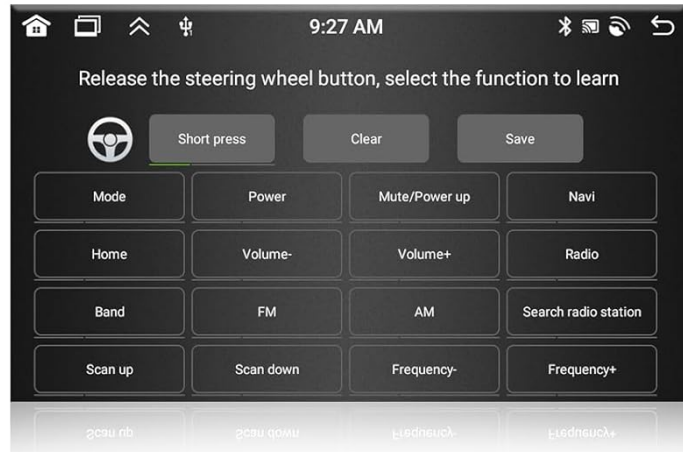
Image: Screenshots showing the Bluetooth calling interface and FM/RDS radio tuner.

4.5 Steering Wheel Control

The unit supports steering wheel button functions. You can learn and assign desired functions through the settings.

Steering Wheel Control

Control the desired function with the steering wheel button function



AHD Reversing Image

View the video on the radio screen while reversing



Image: Interface for learning and assigning steering wheel control functions.

Steering Wheel Control Setup

If your vehicle does not have a CANBUS box, activation of steering wheel controls requires key learning in settings. If it has a CANBUS box, connect the 20-pin white port in the power cable to the CANBUS itself, and the remaining 8-pin white port to the corresponding port on the back of the radio. Match the car model in CANBUS Matching Path: Settings -> Factory Setup (Password 1234) -> Can Settings.

Steering Wheel Control

Optional Note:

a. If no CANBUS box: Activation of steering wheel controls requires key learning in settings .

b. If with CANBUS box: (1). Need to connect the 20-pin white port in the power cable to the Canbus itself, and the remaining 8-pin white port to the corresponding port on the back of the radio.
 (2). Match the car model. CANBUS Matching Path: Settings - Factory Setup (Password 1234) - Can Settings.

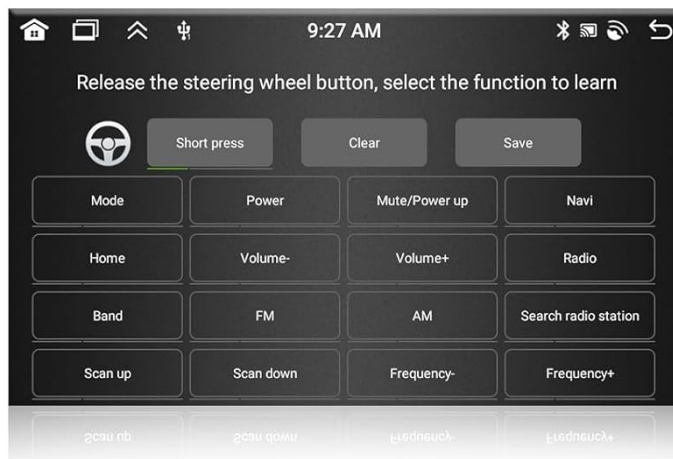
Image: Detailed instructions and interface for setting up steering wheel controls.

4.6 AHD Backup Camera

The Inefala radio is equipped with an AHD camera. When connected, the radio screen will display the rearview camera feed automatically when reversing, assisting with parking maneuvers.

Steering Wheel Control

Control the desired function with the steering wheel button function



AHD Reversing Image

View the video on the radio screen while reversing



Image: Display of the AHD reversing camera view on the car stereo screen.

4.7 Additional Features

- **32-band EQ DSP:** Adjust audio frequencies for a customized listening experience.
- **Split Screen:** Run two applications simultaneously on the screen.
- **High Resolution:** 1280x720 screen resolution supporting 1920x1080P video playback.



Image: Visuals demonstrating the 32-band DSP, split-screen functionality, and high-resolution display.

Your browser does not support the video tag.

Video: This video demonstrates the various function interfaces of the Android car stereo, including navigation, media playback, and settings. It provides a visual guide to navigating the system's user interface.

5. SPECIFICATIONS

Model Name	RM
Screen Size	9 Inches
Screen Resolution	1280x720
Video Playback	Supports 1920x1080P
Processor	8 Core
Memory (RAM)	4GB
Storage (ROM)	64GB
Operating System	Android 15 (as per product title, though feature bullets mention Android 13)
Connectivity	Bluetooth, USB, Wi-Fi
Bluetooth Version	5.0
Audio Output Mode	Stereo
Equalizer	32-band EQ DSP
Map Type	Worldwide (Offline maps available)
Mounting Type	Dashboard Mount
Item Weight	5.65 pounds
Package Dimensions	15.35 x 11.81 x 4.33 inches

6. TROUBLESHOOTING

If you encounter issues, please refer to the following common troubleshooting steps:

- **No Power:** Ensure all power cables are correctly connected and secure. Check the vehicle's fuse box for any blown fuses. Re-perform the pre-installation test (Section 3.4).
- **No Sound:** Verify speaker connections. Check audio settings in the stereo's menu, including volume levels and EQ settings. Ensure the correct audio source is selected.
- **Bluetooth Connection Issues:** Ensure Bluetooth is enabled on both the stereo and your phone. Delete previous pairings and try reconnecting. Some phone models may have compatibility limitations (refer to Section 4.2).
- **GPS Signal Loss:** Ensure the GPS antenna is properly installed and has a clear line of sight to the sky. Check GPS settings in the stereo.
- **Touchscreen Unresponsive:** Try restarting the unit. If the issue persists, contact customer support.
- **Backup Camera Not Displaying:** Verify all camera wiring connections, especially the reverse trigger wire (Section 3.3). Ensure the camera type setting in the factory menu is correct (CVBS or AHD).
- **Steering Wheel Controls Not Working:** Perform the key learning procedure as described in Section 4.5. Ensure CANBUS connections are correct if applicable.

7. WARRANTY AND SUPPORT

Inefala provides a warranty for this product. For specific warranty details, please refer to your purchase documentation or contact customer support.

7.1 How to Reach Us

If you require technical assistance or have questions, please follow these steps:

1. Click on "Inefala Direct" (the seller).
2. Click "Ask a question".
3. Provide details of your issue, including relevant pictures or videos, to help our customer service team assist you efficiently.

You can also reach us via email for 24-hour customer support:

Email: inefalaservices@163.com

Installation tips & How to reach us?

A quick test before installation:

1. The red and yellow wires of the car stereo are combined first, then connected to the positive pole of the 12V battery. The black wire is connected to the negative pole of the battery.
2. After 2 seconds, check the car stereo, if the screen lights up, it means that the car stereo is functioning normally. If you test that the car player turns on, but the device does not work after installation, recheck the installation procedure.

Warm tips:

1. Please double-check that the power cable port we provide matches the port of your car
2. No need to connect the all sockets if they don't fit, because the harness may contains spare sockets to match different car model years
3. If the wiring harness is different or the accessories are missing or damaged, please refer them to our CS Department for processing, and we will resend them for you

STEP 1

How to reach us:

Step 1: Click "Inefala Direct"
Step 2: Click "Ask a question"
Step 3: Please send us questions you met, and attach relevant pictures or videos will help to solve the problem faster!

STEP 2

Have a question for Inefala Direct?

Ask a question

About Seller

Welcome to Inefala store

Why Choose Us?

- Professional Technical Support Team & Customer Service Team to ensure your shopping experience.
- If you encounter any difficulties or doubts in installing or using the products of our store, you can contact our seller (Inefala) through the Amazon platform or contact our customer service team by email: inefalaservices@163.com
- All messages will be replied within 24 HOURS, regardless of holidays.
- One Year Warranty, from the beginning to the end of the use...

Image: Instructions on how to contact customer support through the Amazon platform.



Image: Inefala customer service email address for direct support.