



[Manuals.plus](#) /

> [Treligate](#) /

> Treligate NH-69 Smart Light Sound Machine User Manual

Treligate NH-69

Treligate NH-69 Smart Light Sound Machine User Manual

Model: NH-69

1. INTRODUCTION

This manual provides detailed instructions for the Treligate NH-69 Smart Light Sound Machine. This multi-functional device integrates ambient lighting, a Bluetooth speaker, wireless charging, an alarm clock, and white noise features, all controllable via a dedicated mobile application. Please read this manual thoroughly before use to ensure proper operation and to maximize your experience with the product.



Figure 1: Treligate NH-69 Smart Light Sound Machine

2. PRODUCT OVERVIEW

2.1 Key Features

- **Ambient LED Lighting:** G-shaped design with 16 million colors and 256 dynamic light modes.
- **Bluetooth 5.3 Speaker:** For audio playback and hands-free calls.
- **15W Wireless Charging:** Compatible with Qi-enabled devices.
- **Alarm Clock:** Features sunrise simulation for gentle wake-up.
- **White Noise Sound Machine:** Includes 8 types of soothing sounds.
- **App Control:** Full customization via the "Music Light" mobile application.
- **Music Rhythm Sync:** Lights synchronize with music playback.

Figure 2: Key Features of the NH-69

2.2 Package Contents

Verify that all items are present in the package:

- 1 x G Atmosphere Lamp (Treligate NH-69)
- 1 x Power Cable (Type-C)
- 1 x Instruction Manual



Figure 3: Package Contents

3. SETUP INSTRUCTIONS

3.1 Power Connection

1. Connect the provided Type-C power cable to the power input port on the Treligate NH-69.
2. Plug the other end of the power cable into a suitable power adapter (not included) and then into a wall outlet.
3. The device will power on, and the clock display will activate.

3.2 App Download and Installation

For full control and advanced features, download the "Music Light" app:

- Scan the QR code provided in this manual or on the product packaging.
- Alternatively, search for "Music Light" in your device's App Store (iOS) or Google Play Store

(Android).

- Install the app on your smartphone.

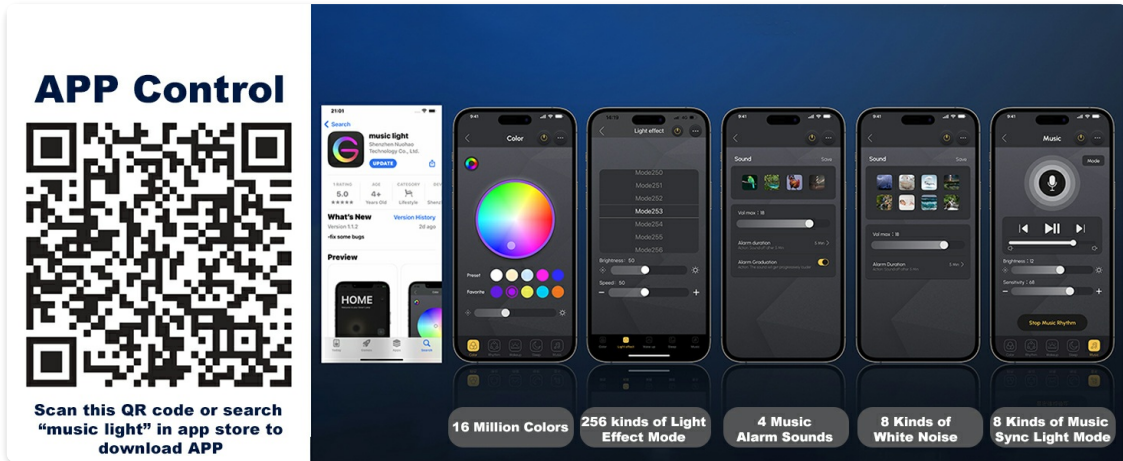


Figure 4: "Music Light" App Control Interface and QR Code
App Download Link: <http://www.qrtransfer.com/musiclight.html>

3.3 Bluetooth Pairing

1. Ensure the Treligate NH-69 is powered on.
2. On your smartphone, enable Bluetooth and search for available devices.
3. Select "NH-69" (or similar name) from the list to pair. A confirmation sound will indicate successful pairing.

4. OPERATING INSTRUCTIONS

4.1 Button Functions

The Treligate NH-69 features several physical buttons for direct control:

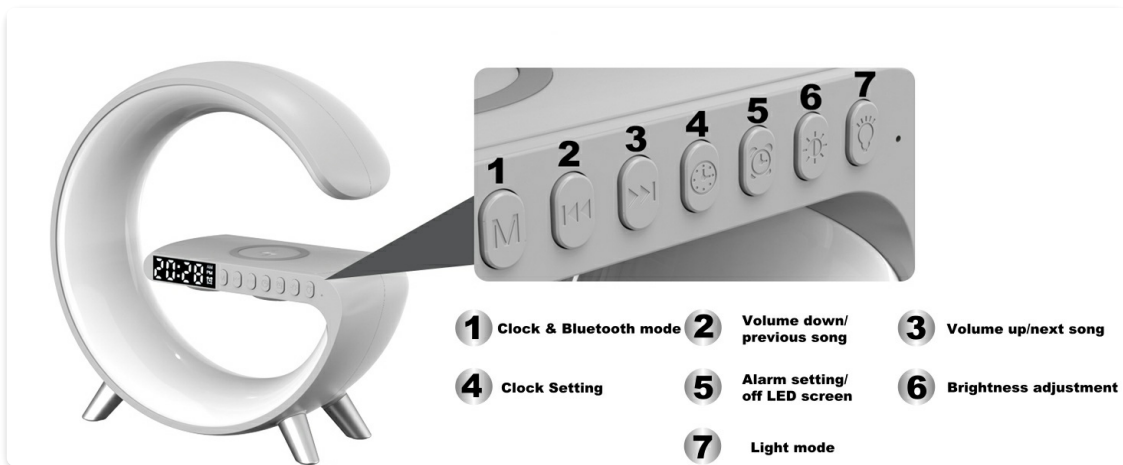


Figure 5: Control Buttons Overview

Button No.	Function
1 (M)	Switch between Clock & Bluetooth mode. Double-click to activate white noise.
2 (-)	Volume Down / Previous Song

Button No.	Function
3 (+)	Volume Up / Next Song
4 (Clock Icon)	Clock Setting
5 (Alarm Icon)	Alarm Setting / Turn LED screen off
6 (Sun Icon)	Brightness Adjustment
7 (Light Bulb Icon)	Light Mode Selection

4.2 App Control

The "Music Light" app provides comprehensive control over the device's functions:

- **Color & Light Effects:** Choose from 16 million colors and 256 light modes. Adjust brightness and speed.
- **Sound Settings:** Control Bluetooth speaker volume and select white noise options.
- **Alarm Settings:** Set multiple alarms, customize ringtones, and activate sunrise simulation.
- **Music Sync:** Enable lights to change automatically with music rhythm.

4.3 Wireless Charging

Place your Qi-enabled smartphone on the designated charging pad on the device. The 15W wireless charger will begin charging automatically.

- Ensure your phone supports wireless charging.
- Remove thick phone cases that may interfere with charging.



Figure 6: Wireless Charging Function

4.4 Alarm Clock Mode

Set your alarm using the app or the physical buttons. The sunrise simulation feature will gradually brighten the light 3 minutes before your set alarm time, providing a gentle wake-up experience.



Figure 7: Sunrise Simulation Wake-Up Light

4.5 White Noise Sound Machine

Access 8 types of white noise sounds via the app or by double-clicking the 'M' button. These sounds are designed to create a relaxing environment for sleep or focus.



Figure 8: White Noise Options for Sleep Aid

4.6 Music Sync Lighting

Activate the music rhythm sync feature through the app to have the lamp's lights dynamically change and pulse in time with your music.

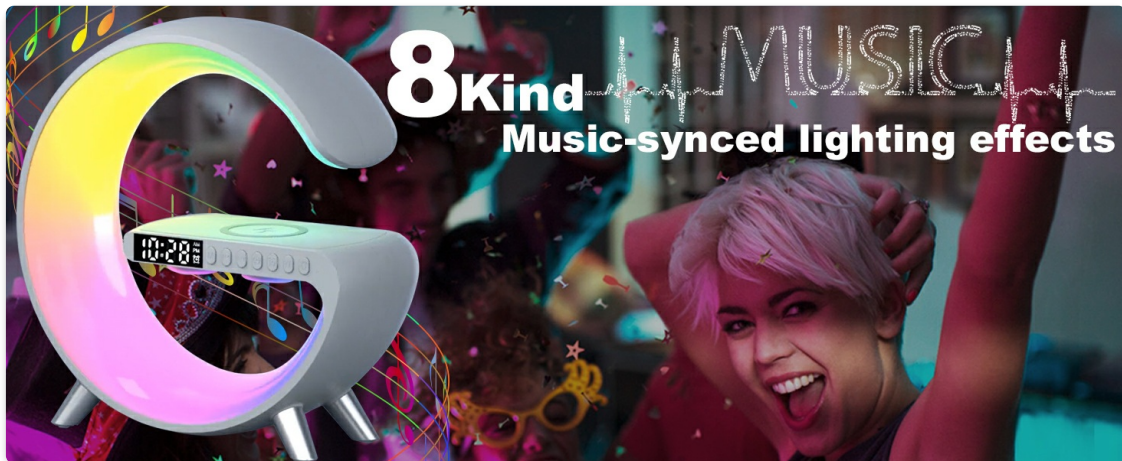


Figure 9: Music Sync Mode in action

5. MAINTENANCE

To maintain the longevity and appearance of your Treligate NH-69:

- Wipe the device with a soft, dry cloth.
- Avoid using abrasive cleaners or solvents.
- Do not expose the device to water or excessive moisture.

6. TROUBLESHOOTING

Problem	Possible Cause	Solution
---------	----------------	----------

Problem	Possible Cause	Solution
Device does not power on.	Power cable not connected properly or power outlet issue.	Ensure the power cable is securely connected and the outlet is functional.
Wireless charging not working.	Phone not Qi-enabled, phone case too thick, or improper placement.	Verify phone compatibility, remove thick cases, and ensure phone is centered on the charging pad.
Bluetooth connection unstable or failing.	Device too far from phone, interference, or pairing issue.	Move phone closer to the device. Re-pair the Bluetooth connection. Avoid strong interference sources.
App cannot connect to the device.	Bluetooth not enabled, app permissions, or device not in pairing mode.	Ensure Bluetooth is on. Check app permissions. Restart the app and device.
Lights are not responding.	Light mode off, brightness set to minimum, or app control issue.	Check light mode and brightness settings via buttons or app. Restart the device.

7. SPECIFICATIONS

Feature	Detail
Model Name	NH-69
Dimensions (D x W x H)	3.38" x 8.94" x 9.45"
Item Weight	0.98 Pounds (15.7 ounces)
Material	Plastic
Light Source Type	LED
Wireless Charging Output	15W
Bluetooth Version	5.3
Control Method	App or Button
Power Source	Corded Electric
Room Type	Bedroom, Kids Room, Living Room, Office, Study Room

8. WARRANTY AND SUPPORT

For any product-related inquiries, technical support, or warranty claims, please contact the Treligate Service Team. They are available to assist you and aim to respond within 24 hours.

Refer to the contact information provided with your purchase or on the official Treligate website for support details.