

Bepuzzled 31187

Instruction Manual

BePUZZLED MARVEL IRON MAN 3D CRYSTAL PUZZLE

Model: 31187

INTRODUCTION

This manual provides instructions for assembling and caring for your BePuzzled Marvel Iron Man 3D Crystal Puzzle. This unique puzzle features translucent, interlocking pieces that form a three-dimensional figure of Iron Man. Designed for puzzlers aged 12 and up, it offers an engaging and rewarding experience.



Image: The product box alongside the fully assembled translucent red and yellow Iron Man 3D crystal puzzle.

Safety Information

No specific safety warnings are applicable for this product beyond general toy safety guidelines. Please ensure all pieces are kept away from small children to prevent choking hazards.

What's in the Box

- 1 Crystal Puzzle (37 pieces)



Image: The front of the BePuzzled Marvel Iron Man 3D Crystal Puzzle box, showing the Iron Man figure and piece count.

ASSEMBLY INSTRUCTIONS

The Iron Man 3D Crystal Puzzle consists of 37 unique, translucent pieces that interlock to form the final figure. Follow these steps for assembly:

1. **Unpack and Sort:** Carefully remove all pieces from the packaging. It is recommended to sort the pieces by color (red and yellow) and by general shape to make identification easier.

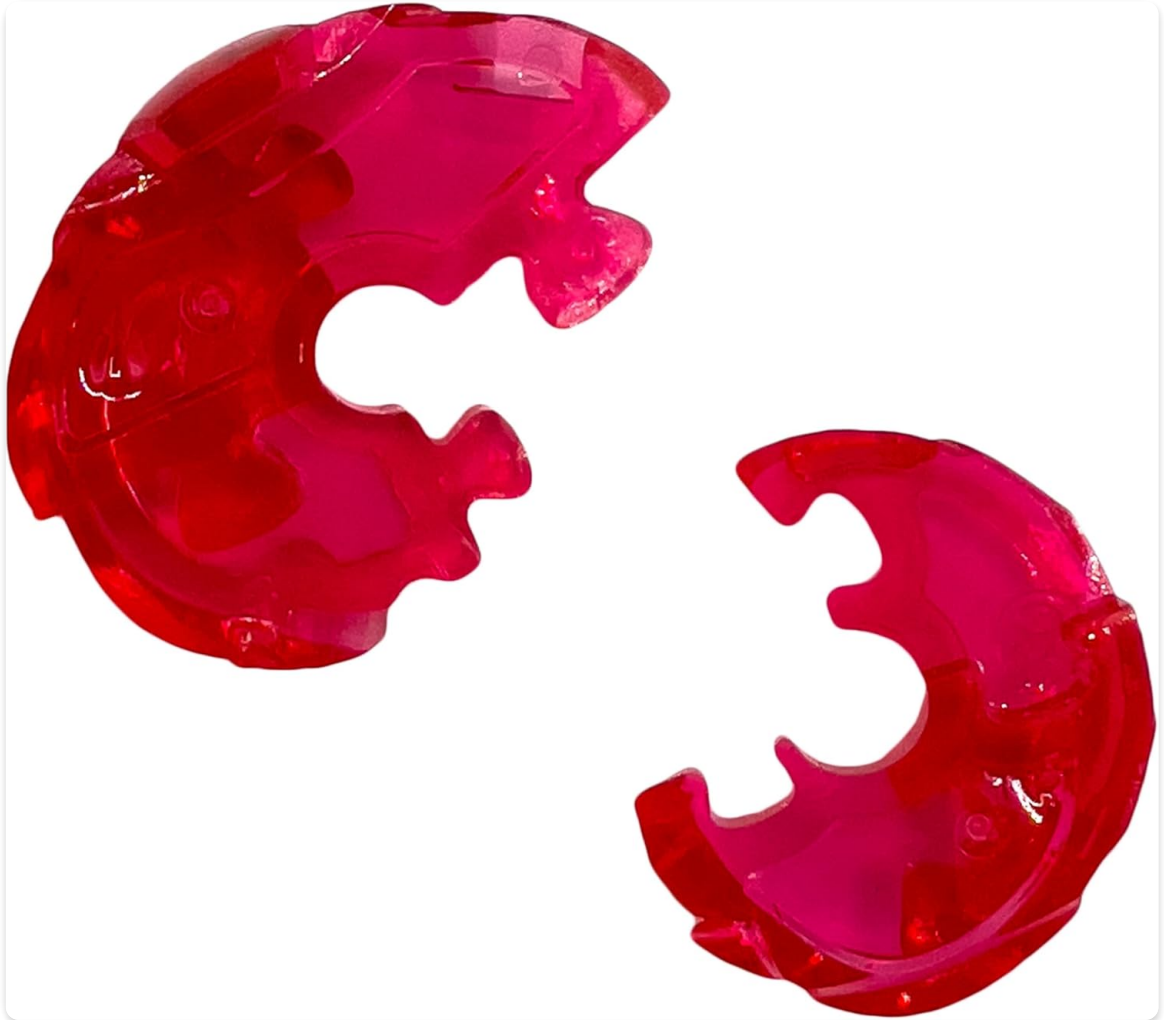


Image: A close-up view of several red translucent puzzle pieces, showing their intricate shapes.

2. **Identify Key Pieces:** Some pieces may have small numbers or unique features that help in the initial stages of assembly. Refer to the included step-by-step guide for detailed instructions.



Image: A person's hands sorting various clear puzzle pieces on a transparent glass table, with some pieces having small stickers.

3. **Interlock Pieces:** Begin connecting pieces according to the guide. The pieces are designed to interlock snugly. Apply gentle pressure to ensure they click into place.



Image: A person's hands carefully fitting together two blue translucent puzzle pieces, demonstrating the interlocking mechanism.

4. **Build Layer by Layer:** The puzzle is typically built in layers or sections. Follow the sequence provided in the instructions to ensure structural integrity.

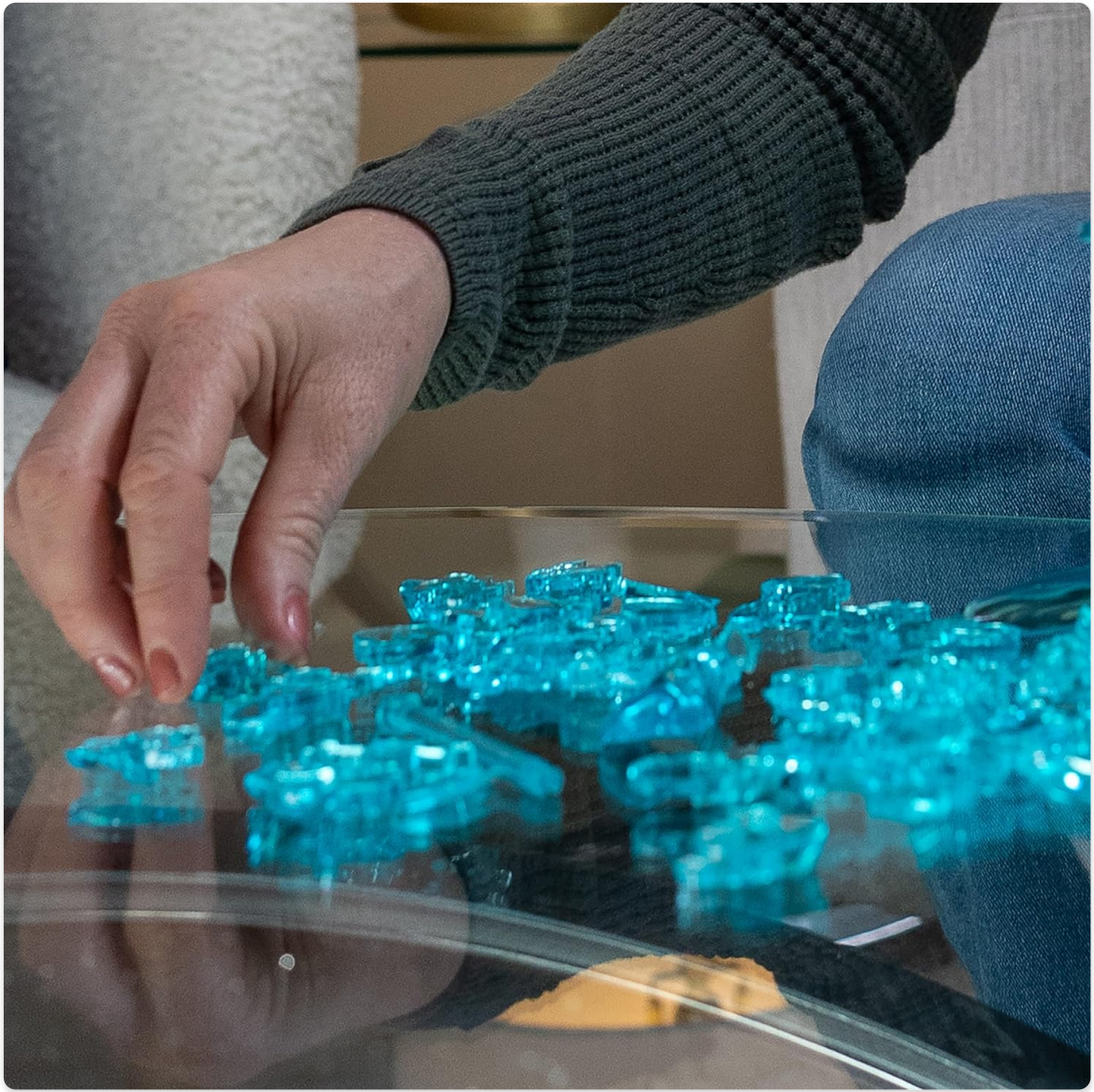


Image: A close-up shot of multiple blue translucent puzzle pieces already connected, with more pieces waiting to be added.

5. **Final Assembly:** Once all sections are complete, connect them to form the full Iron Man figure. Ensure all connections are secure.

For visual guidance, please refer to the official product overview video:

Your browser does not support the video tag.

Video: An official product overview video demonstrating the assembly process and features of the BePuzzled Marvel Iron Man 3D Crystal Puzzle. This video highlights the unique translucent pieces and the final assembled figure.

CARE AND MAINTENANCE

To maintain the appearance of your 3D Crystal Puzzle:

- **Cleaning:** Gently wipe the assembled puzzle with a soft, dry cloth to remove dust. Avoid using abrasive cleaners or excessive moisture, as this may dull the translucent finish.
- **Display:** Display your completed puzzle on a stable, flat surface away from direct sunlight or extreme temperatures to prevent discoloration or warping.
- **Disassembly (Optional):** If you wish to disassemble the puzzle, carefully reverse the assembly steps. Store pieces in their original packaging or a secure container to prevent loss.

TROUBLESHOOTING

- **Pieces Not Fitting:** Ensure you are attempting to connect the correct pieces as per the instructions. Some pieces may look similar but have subtle differences. Do not force pieces together, as this can cause damage.
- **Difficulty in Assembly:** The 3D Crystal Puzzles are designed to be challenging. If you encounter difficulty, take a break and revisit the instructions. Online step-by-step solutions are available for extra help. Visit ugames.com/instructions.asp for assistance.

PRODUCT SPECIFICATIONS

Product Dimensions	5.75 x 3.75 x 0.1 inches
Item Weight	3.84 ounces
Model Number	31187
Manufacturer Recommended Age	12 years and up
Number of Pieces	37
Manufacturer	University Games
Release Date	August 24, 2024

WARRANTY AND SUPPORT

Specific warranty information for this product is not provided in the product details. For any support inquiries or to view other puzzles, please visit the official BePuzzled website or the University Games website:

[BePuzzled Store on Amazon](#)

[University Games Official Website](#)



ORIGINAL 3D CRYSTAL PUZZLE™

Disney

COLLECT THEM ALL!



STITCH



OLAF



ELSA



GOOFY



PINOCCHIO



TOY STORY
ALIENS



BUZZ
LIGHTYEAR



BUZZ
LIGHTYEAR



WINNIE
THE POOH



GENIE



PLUTO



MICKEY MOUSE



MINNIE MOUSE



MICKEY MOUSE



MINNIE MOUSE



DONALD DUCK



DAISY DUCK



ARIEL



TINKER BELL



AURORA



RAPUNZEL



CINDERELLA



BELLE



BAMBI



CHESHIRE
CAT



ALICE



NEMO



DUMBO



DUMBO

Image: A poster showcasing various Disney characters available as Original 3D Crystal Puzzles, encouraging collection.

ORIGINAL 3D CRYSTAL PUZZLE™

MARVEL

COLLECT ALL/
COLLECTIONNEZ TOUS LES/
RECOGE TODOS



For complete instructions, visit: / Pour des instructions complètes, visitez:

31187

Para obtener instrucciones completas, visite:

www.ugames.com/instructions.asp

See our entire line of games and puzzles at:

Découvrez notre gamme complète de jeux et de casse-têtes sur:

Vea a toda nuestra línea de juegos y rompecabezas en:



ARE YOU GAME? MOD

AGES/ÂGES/AÑOS 12+ 37 PIECES/PIÈCES/PIEZAS

Image: A poster displaying other Marvel 3D Crystal Puzzles, including Iron Man, Black Panther, Spider-Man, and Captain America, with a call to collect them all.

no relevant documents