



Manuals.plus /

› FEELNEEDY /

› FEELNEEDY Wireless Cat Water Fountain User Manual

## FEELNEEDY FN-W08L

# FEELNEEDY Wireless Cat Water Fountain User Manual

Model: FN-W08L

[Introduction](#)   [Safety Information](#)   [Package Contents](#)   [Product](#)  
[Overview](#)   [Setup](#)   [Operation](#)   [Maintenance](#)   [Troubleshooting](#)   [Specifications](#)   [Warranty & Support](#)

## 1. INTRODUCTION

Thank you for choosing the FEELNEEDY Wireless Cat Water Fountain. This automatic pet water dispenser is designed to provide fresh, circulating water for your cats and dogs, promoting better hydration and health. Featuring a unique water and battery separation design, motion sensor, and multiple working modes, this fountain offers convenience and safety for both you and your beloved pets. Please read this manual thoroughly before use to ensure proper operation and maintenance.



*Image: The FEELNEEDY Wireless Cat Water Fountain, showcasing its sleek design and included filters.*

## 2. SAFETY INFORMATION

- Always read the product manual before initial use and keep it for future reference.
- **Do not immerse or wash the control module.** The control module contains the battery and electronic components and should be detached and charged independently.
- Ensure the battery is fully charged before first use to maximize performance.
- Keep the fountain on a stable, level surface to prevent spills.
- Regularly clean all water-contacting parts to maintain hygiene and prevent bacterial growth.
- Only use original or approved replacement parts and filters.
- If you find any abnormality in the battery module or fountain operation, stop using it immediately and contact customer service.
- The wireless design eliminates tangled cords, significantly reducing safety hazards for pets.

# Separate Design for Water & Battery

Removable battery for safer and easier charging



**4000** mAh  
Battery



Full Charge in  
**5H**



Up to **45** Days  
Standby

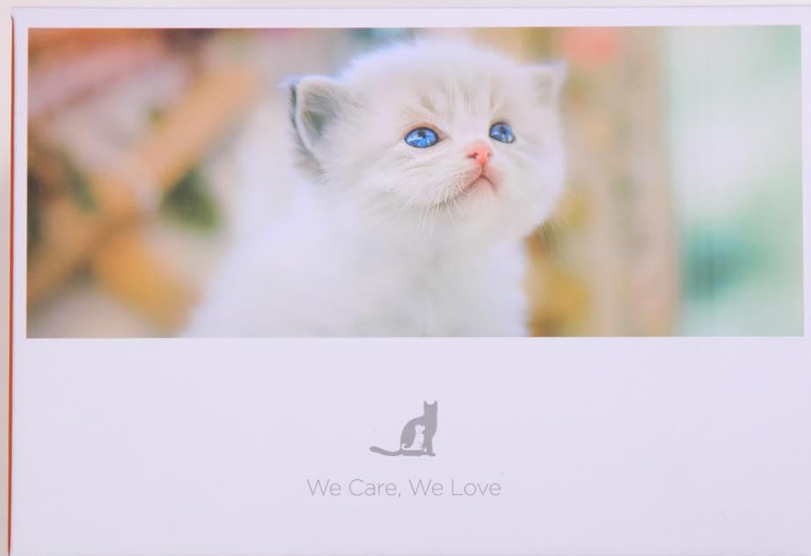
*Image: Illustration of the water and battery separation design, highlighting the removable battery for safer charging and operation.*

### 3. PACKAGE CONTENTS

Upon opening the package, please verify that all the following components are included:

- 1 x Water Container

- 1 x Stainless Steel Water Tray
- 1 x Filter Tray
- 1 x Faucet
- 1 x Control Module (with built-in 4000mAh battery)
- 1 x Pump Sponge
- 3 x Filters
- 1 x Charging Cable
- 1 x User Manual



*Image: All components included in the FEELNEEDY Wireless Cat Water Fountain package, laid out for easy identification.*

## 4. PRODUCT OVERVIEW

The FEELNEEDY Wireless Cat Water Fountain consists of several key parts designed for optimal performance and ease of use:

- **Water Container:** The main reservoir for holding 3.5 liters (118 oz) of water. Features a clear window with MIN/MAX indicators.
- **Stainless Steel Water Tray:** The top drinking surface, made of durable 304 stainless steel for hygiene and easy cleaning.
- **Filter Tray:** Holds the multi-layered filter and pump sponge, ensuring water purification.
- **Faucet:** Provides a stream of water, mimicking a tap, which can encourage pets to drink.
- **Control Module:** Houses the 4000mAh battery and control buttons for different modes. It detaches for charging.
- **Pump:** Located within the filter tray, responsible for circulating water.
- **Filter:** A multi-layered filtration system including activated carbon, ion exchange resin, and non-woven fabric to

purify water.



*Image: Detailed view of the 4-layer filtration system, illustrating how water is purified for your pet.*

## 5. SETUP GUIDE

Follow these steps to assemble your FEELNEEDY Wireless Cat Water Fountain:

1. **Prepare the Filter Tray:** Put the filter tray into the water container. Connect the pipe from the pump to the

filter tray. Insert the pump sponge and then the filter into their designated slots within the filter tray.

2. **Place the Stainless Steel Tray:** Carefully place the stainless steel water tray onto the assembled filter tray, ensuring it sits securely.
3. **Insert the Faucet:** Insert the faucet into the corresponding hollow space on the stainless steel water tray.
4. **Attach the Control Module:** Insert the control module into the battery holder slot on the side of the fountain. Ensure it clicks into place.
5. **Fill with Water:** Fill the water container with fresh water up to the MAX line.
6. **Charge the Battery:** Before first use, fully charge the control module's 4000mAh battery using the provided charging cable. A full charge takes approximately 5 hours and can last up to 45 days in auto mode.

## Dual Water Flow Mode



Faucet water flow



Fountain water flow

*Image: Step-by-step visual guide for assembling the FEELNEEDY Wireless Cat Water Fountain.*

Your browser does not support the video tag.

*Video: An official demonstration of the FEELNEEDY Wireless Pet Water Fountain, showcasing its features and ease of use.*

## 6. OPERATING MODES AND WATER FLOW

The fountain offers flexible operating modes and water flow options to suit your pet's preferences and conserve energy.

### Working Modes:

- **Sensor Mode:** Water runs for 20 seconds when your pet approaches within a 120° angle and 5-foot range. This mode is recommended for energy conservation.
- **Timed Mode:** Water runs for 15 seconds every 15 minutes, providing regular hydration intervals.
- **Continuous Mode:** Water flows continuously. This mode is only available when the fountain is plugged into a power source.

Press the ON/OFF button on the control module to cycle through these modes.



Image: Visual representation of the three working modes: Sensor, Timed, and Continuous, with descriptions.

### Water Flow Options:

- **Faucet Water Flow:** Water streams from the faucet, mimicking a tap.
- **Fountain Water Flow:** Water bubbles up from the center of the tray, creating a gentle fountain.



Image: Comparison of the faucet water flow and fountain water flow options, showing a cat drinking from each.

Your browser does not support the video tag.

Video: An official overview video of the Wireless Cat Water Fountain, demonstrating its automatic features.

## 7. MAINTENANCE AND CLEANING

Regular cleaning and filter replacement are crucial for your pet's health and the longevity of the fountain.

### Filter Replacement:

It is recommended to replace the filter every **2 weeks** to ensure continuous purification and healthy water for your pet. Replacement filters can be found by searching for "B0D1K826GX".

### Fountain Cleaning:

The 304 stainless steel water tray is durable and easy to clean; it can be directly placed in the dishwasher. For other parts, follow these steps:

1. Disconnect the control module and empty the water container.
2. Disassemble the fountain components: remove the stainless steel tray, filter tray, and faucet.
3. Clean all parts (except the control module) with mild soap and water. Rinse thoroughly to remove any soap residue.
4. For the water container, use a soft brush to clean any buildup.

### Water Pump Cleaning:

To ensure optimal water flow and prevent blockages, clean the water pump regularly:

1. Remove the cover of the pump, take out the sponge, and clean it.
2. Remove the cap of the impeller and take out the impeller using a small tool.
3. Thoroughly clean all pump parts with the small brush provided (if applicable) and wash the inside of the water pump.



Image: Visual guide demonstrating the steps for cleaning the water pump components.

## 8. TROUBLESHOOTING

Problem	Possible Cause	Solution
Fountain not dispensing water.	Low water level; pump clogged; battery low; incorrect mode.	Refill water to MAX line. Clean the pump and filter. Recharge the battery. Check the operating mode.
Red indicator light is on.	Water level is below MIN.	Refill water immediately. The pump automatically shuts off to prevent overheating.
Fountain is noisy.	Low water level; pump dirty or obstructed.	Ensure water is above MIN. Clean the pump thoroughly, including the impeller.
Water has an unusual odor or taste.	Filter needs replacement; fountain needs cleaning.	Replace the filter. Disassemble and thoroughly clean all fountain components.
Motion sensor not activating.	Sensor obstructed; battery low; not in Sensor Mode.	Ensure sensor is clear. Recharge battery. Switch to Sensor Mode.

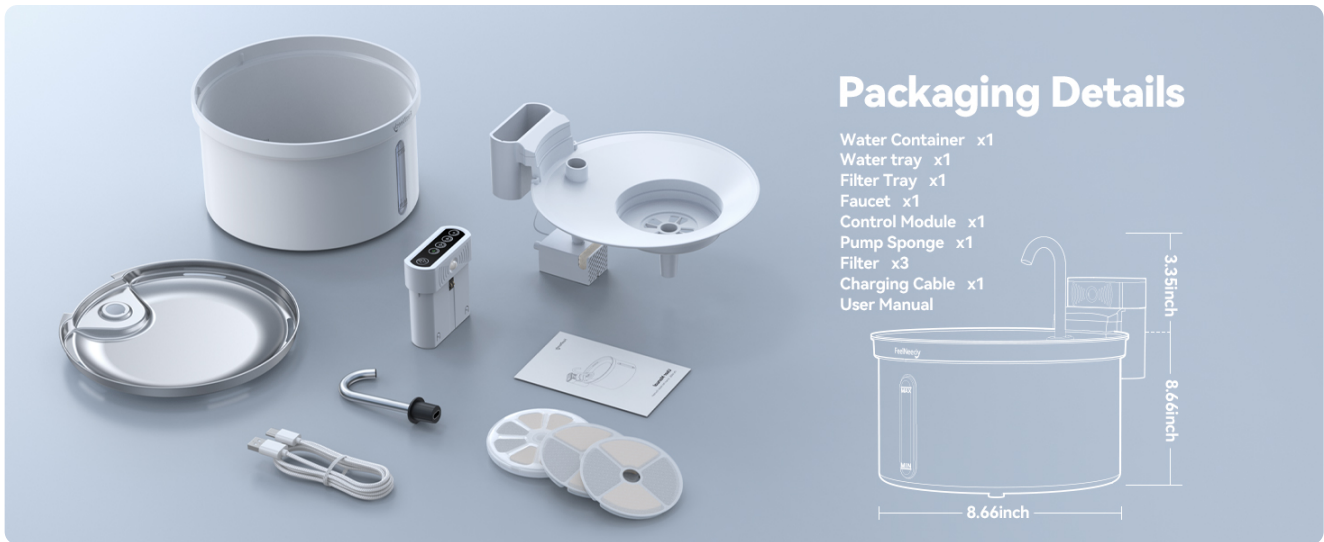


Image: Illustration showing the fountain's low water level detection system, with blue indicating sufficient water and red indicating low water.

## 9. SPECIFICATIONS

<b>Brand</b>	FEELNEEDY
<b>Model Number</b>	FN-W08L
<b>Capacity</b>	3.5 Liters (118 oz)
<b>Dimensions (LxWxH)</b>	8.66"L x 8.66"W x 12"H
<b>Item Weight</b>	1 Kilogram (2.2 pounds)
<b>Material</b>	304 Stainless Steel, Acrylonitrile Butadiene Styrene (ABS)
<b>Battery Type</b>	1 Lithium Polymer battery (included)
<b>Battery Capacity</b>	4000mAh
<b>Battery Life (Auto Mode)</b>	Up to 45 days
<b>Noise Level</b>	Approximately 25dB
<b>Target Audience</b>	Cats, Dogs (All Breed Sizes, All Life Stages)
<b>Specific Uses</b>	Indoor

## 10. WARRANTY AND SUPPORT

### Warranty Information:

The FEELNEEDY Wireless Cat Water Fountain comes with a **3-Year Warranty**. Please retain your proof of purchase for warranty claims.

### Customer Support:

For any questions, concerns, or technical assistance, please do not hesitate to contact our customer support team. We are dedicated to providing excellent service.

**Email:** [support@feelneedy.com](mailto:support@feelneedy.com)

We care, we love. Thank you for choosing FEELNEEDY.

