

- › [Eonon](#) /
- › [Eonon M3BKX7 Android 14 Car Stereo User Manual for Mazda 3 \(2004-2009\)](#)

Eonon M3BKX7

Eonon M3BKX7 Android 14 Car Stereo User Manual

For Mazda 3 (2004-2009)

1. INTRODUCTION

This manual provides detailed instructions for the installation, operation, and maintenance of your Eonon M3BKX7 Android 14 Car Stereo. This unit is designed for specific Mazda 3 models manufactured between 2004 and 2009, offering an enhanced in-car entertainment and navigation experience.



Image: Eonon M3BKX7 Android 14 Car Stereo unit with external microphone and backup camera accessories.

1.1 Compatibility

The Eonon M3BKX7 is compatible with Mazda 3 vehicles from model years 2004 to 2009. It integrates with existing vehicle systems, including steering wheel controls and reverse signals, via the included CANBUS module. Please note that the unit does not work with the factory car LCD screen of 2004-2005 Mazda 3 models. If your car dash matches the image for 2010-2013 Mazda 3, please refer to the Eonon 2010-2013 Mazda 3 car stereo manual.

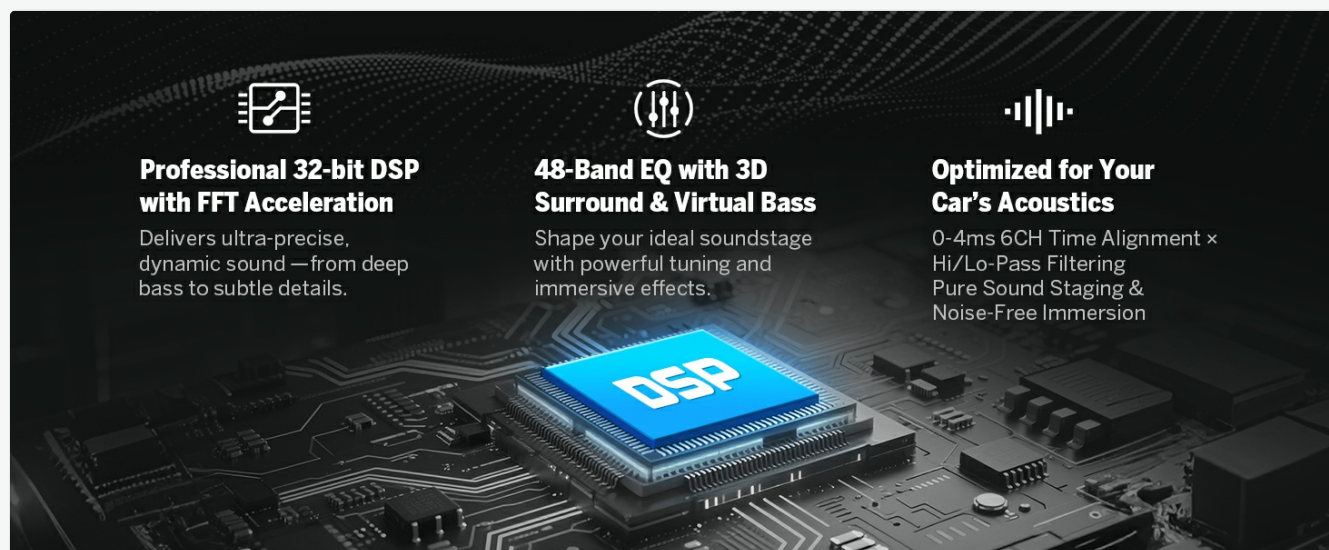


Image: Visual guide for Mazda 3 dashboard compatibility, indicating which models are supported.

2. PACKAGE CONTENTS

Verify that all items listed below are present in your package before beginning installation:

- Eonon M3BKX7 Head Unit
- Backup Camera (A0125) *1
- Power Cable *1
- GPS Antenna *1
- USB Adapter Cable *2
- Audio Video Adapter Cable *2
- Backup Camera Video Input Cable *1
- 15A Fuse *1
- External Microphone *1
- CAN Bus *1
- User Manual *1
- Adhesive Pad *1
- Radio Antenna Adapter Cable *1
- Speaker *1



Image: Diagram illustrating all components included in the Eonon M3BKX7 package.

3. SETUP & INSTALLATION

The Eonon M3BKX7 is designed for plug-and-play installation in compatible Mazda 3 vehicles (2004-2009). No additional kits or cable modifications are typically required. Professional installation is recommended if you are unfamiliar with car audio system wiring.

3.1 Pre-Installation Checklist

- Ensure the vehicle's ignition is off and the battery is disconnected.
- Confirm all package contents are present.
- Review the wiring diagram thoroughly.

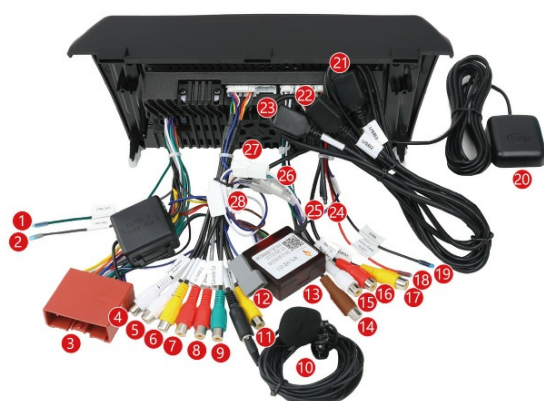
3.2 Installation Steps (General)

1. Carefully remove the factory car stereo and trim panels.
2. Connect the provided power cable, CAN Bus, and other necessary adapters to the vehicle's wiring harness.
3. Connect the GPS antenna and external microphone, routing cables appropriately.
4. If installing the backup camera, route its video input cable to the head unit and connect the camera to the vehicle's reverse light power source.
5. Mount the Eonon M3BKX7 head unit into the dashboard opening.
6. Reconnect the vehicle battery and test the unit's functionality before reassembling the trim panels.

3.3 Wiring Diagram

Refer to the detailed wiring diagram for specific connections. The CAN Bus supports most original vehicle functions, including steering wheel controls and reverse signals (voice buttons are not supported).

Wiring Diagram



- | | |
|-------------------------|----------------------------|
| 1. SWC Wire 1 | 15. Audio Output RL |
| 2. SWC Wire 2 | 16. Audio Output RR |
| 3. Power Cable | 17. Backup Camera Input |
| 4. Audio Output FL | 18. +12V for Backup Camera |
| 5. AUX Audio In L | 19. GND Wire |
| 6. Video Input | 20. GPS Antenna |
| 7. Audio Output FR | 21. USB Port |
| 8. AUX Audio In R | 22. USB Port |
| 9. Subwoofer Output | 23. USB Port for CarPlay |
| 10. External Microphone | 24. WiFi Antenna |
| 11. Front Camera Input | 25. Bluetooth Antenna |
| 12. Radio Antenna Input | 26. Brake Shift Control |
| 13. CAN Bus Decoder | 27. RX/TX Input |
| 14. Center Audio Out | 28. AMP Control Wire |

Image: Comprehensive wiring diagram for the Eonon M3BKX7 car stereo, detailing all input and output connections.

Applicable Models

2004-2009 Mazda 3



Note: The unit doesn't work with the factory car LCD screen of **2004-2005 Mazda 3**.



Note: If your car dash is the same as the picture above, please check **Eonon 2010-2013 Mazda 3 car stereo**.

Image: Illustration of plug-and-play features, highlighting compatibility with steering wheel controls, Bose audio system, and LCD screen (where applicable).

4. OPERATING INSTRUCTIONS

4.1 Power On/Off

The unit powers on automatically with the vehicle's ignition. To manually power off or restart, press and hold the power button on the unit's front panel.

4.2 Wireless CarPlay / Android Auto

Connect your smartphone wirelessly for access to navigation, music, calls, and messages through the car stereo interface.

4.2.1 Wireless Apple CarPlay Connection

1. Open the 'Zlink5' application on the car stereo.
2. On your iPhone, enable Wi-Fi and Bluetooth.
3. In your iPhone's Bluetooth device list, locate and select 'EONON'. Enter the PIN '0000' to pair.
4. Once connected, tap 'Use CarPlay' on your iPhone. The connection should complete within a few seconds.

4.2.2 Wireless Android Auto Connection

1. Open the 'Zlink5' application on the car stereo.
2. On your Android phone, enable Wi-Fi and Bluetooth.
3. In your Android phone's Bluetooth device list, locate and select 'EONON'. Enter the PIN '0000' and confirm.
4. The connection should complete within a few seconds.



Image: Step-by-step guide for connecting an iPhone to Wireless Apple CarPlay.

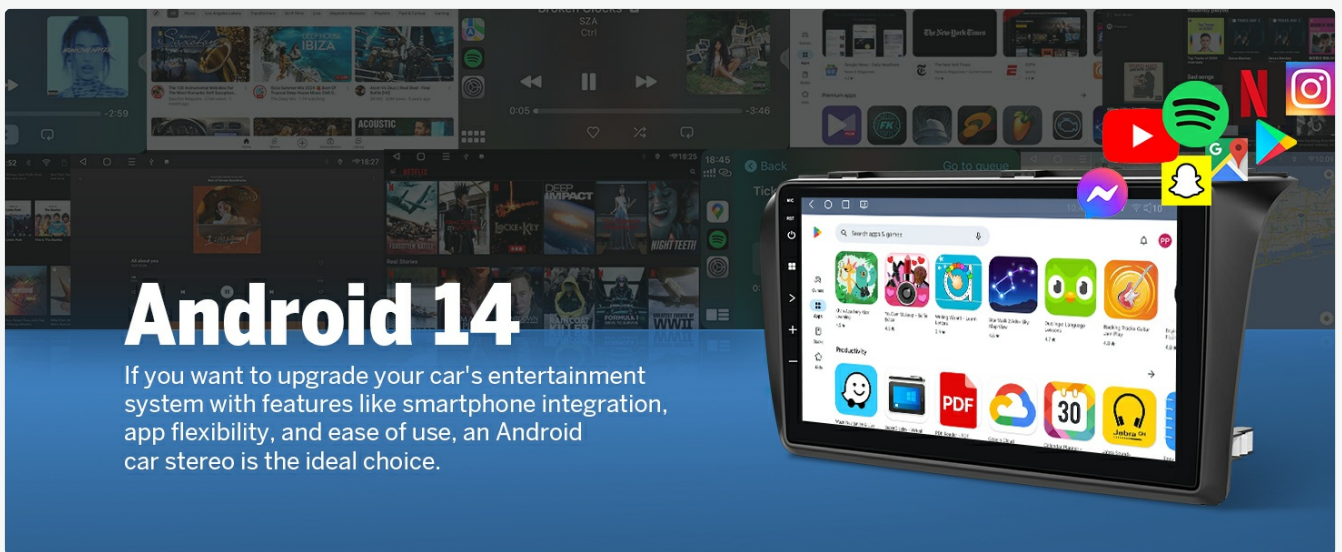


Image: Step-by-step guide for connecting an Android phone to Wireless Android Auto.

4.3 Bluetooth 5.4

The unit features Bluetooth 5.4 for quick and stable connections, noise reduction, clear call quality, and high-quality music streaming. Pair your phone via the Bluetooth settings on the head unit to enable hands-free calling and audio playback.



Image: Diagram highlighting the independent Bluetooth module and external antenna for enhanced connectivity.

4.4 DSP Audio Processor

Utilize the built-in 32-bit DSP audio processor with FFT acceleration and a 48-band equalizer to customize your audio experience. Select from preset EQ modes (Custom, Standard, Popular, Rock, Classical, Jazz) or create your own sound profile. The ST TDA7388 amplifier provides 4x45W surround sound output.

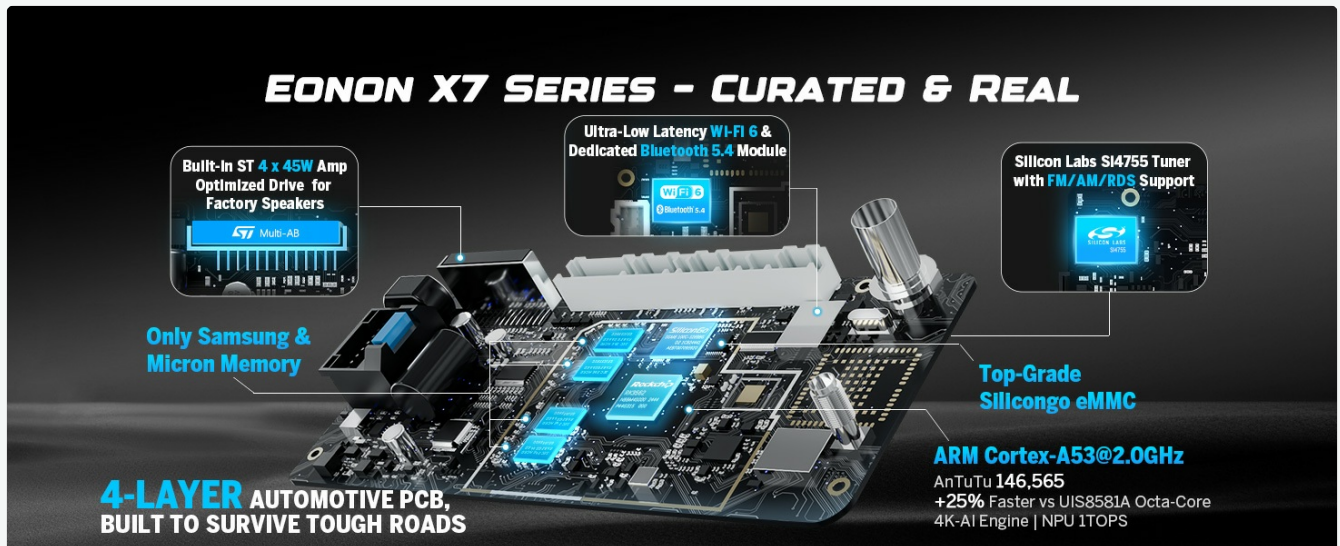


Image: Details on the DSP audio processor, including 32-bit DSP, 48-band EQ, and optimization for car acoustics.

4.5 Screen Mirroring

Mirror your smartphone screen (iOS or Android) onto the car stereo display.

4.5.1 iOS Screen Mirroring

1. Open the 'Zlink5' app on the car stereo and set it to iPhone wireless screen mirroring mode.
2. Turn on your iPhone's personal hotspot and connect the car stereo to it.
3. On your iPhone, enable the screen mirroring function and select 'zj-airplay'.

4.5.2 Android Screen Mirroring

1. Open the 'Zlink5' app on the car stereo and set it to Android wireless screen mirroring mode.
2. Turn on your Android phone's personal hotspot and connect the car stereo to it.
3. Install the Zplus app on your phone. Open it and select 'wireless connection'.

3 Sets of UI Themes



Image: Step-by-step instructions for setting up screen mirroring from an iOS device.



9 Inch IPS Display

Vibrant Colors and Sharp Details

Perfect for navigation, entertainment, and more.

2.5D
Capacitive touchscreen

1280*720
Resolution

Image: Step-by-step instructions for setting up screen mirroring from an Android device.

4.6 Radio (AM/FM/RDS)

Access AM/FM radio stations. The unit supports RDS (Radio Data System) for displaying station information where available.

4.7 USB Playback

Connect USB storage devices (up to 512GB) to play audio and video files. The unit features multiple USB ports for convenience.

4.8 GPS Navigation

Utilize online or offline navigation applications. The included GPS antenna ensures accurate positioning.

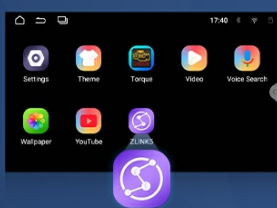
4.9 Camera Inputs

The unit supports both rear and front camera inputs. The included A0125 backup camera provides 1080P AHD resolution with a 140° rear viewing angle and reversing guidelines. An optional A100 dash cam (not included) can be connected for front recording.



Image: Features of the included A0125 backup camera, including reversing guidelines, 720P AHD, 140° viewing angle, and IP68 waterproof rating.

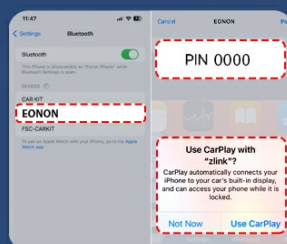
Wireless Apple Carplay Connection



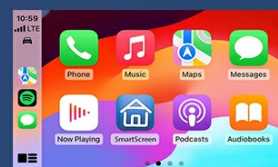
1 Click the Zlink5 app on the car stereo.



2 Turn on the WiFi and Bluetooth of the iPhone.



3 Find 'EONON' in your phone's Bluetooth device list and enter 0000 to pair. Once connected, tap 'Use CarPlay'.



4 Wait a few seconds to complete the connection.

Image: Features of a compatible dash cam (A100, not included), showing 120° viewing angle and video playback capabilities.

4.10 OBD2 Functionality

The unit supports an optional V0056 OBD2 adapter (not included) for vehicle fault diagnosis and real-time status monitoring.

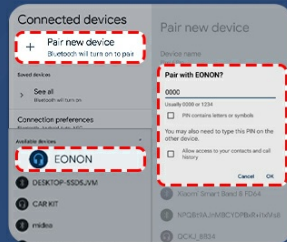
Wireless Android Auto Connection



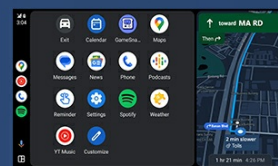
1 Click the Zlink5 app on the car stereo.



2 Turn on the WiFi and Bluetooth of the Phone.



3 Find 'EONON' in your phone's Bluetooth device list, enter 0000 and click "OK".



4 Wait a few seconds to complete the connection.

Image: Display showing vehicle fault diagnosis and real-time status via an optional OBD2 adapter.

4.11 User Interface Customization

Personalize your car stereo's appearance with customizable boot logos, button colors, and wallpapers. The unit also offers three distinct UI themes.



Image: Examples of user interface customization, including boot logo, button color selection, and wallpaper options.

Over-the-air Firmware Update

Keep your car stereo up-to-date through OTA updates. Fix software issues and enhance security with just a few taps.

Note: Android system upgrade is not supported.

Image: Display of three different user interface themes available on the Eonon M3BKX7.

5. MAINTENANCE

5.1 Over-the-Air (OTA) Firmware Updates

The Eonon M3BKX7 supports OTA firmware updates. These updates address software issues and enhance security. To update, navigate to the system settings and check for available updates. Note that these are firmware updates and do not upgrade the Android operating system version.



Image: Graphic illustrating the Over-the-Air (OTA) firmware update process.

5.2 General Care

- Clean the screen with a soft, lint-free cloth. Avoid abrasive cleaners.
- Keep the unit free from excessive dust and moisture.
- Ensure proper ventilation around the unit to prevent overheating.

6. TROUBLESHOOTING

If you encounter issues with your Eonon M3BKX7, refer to the following common solutions:

- **No Power:** Check all power connections and the 15A fuse. Ensure the vehicle battery is properly connected.
- **No Sound:** Verify speaker connections and audio output settings. Check the volume level and ensure the mute function is not active.
- **CarPlay/Android Auto Connectivity Issues:** Ensure Wi-Fi and Bluetooth are enabled on both the head unit and your smartphone. Re-pair the devices if necessary. Check for any software updates for the Zlink5 app or your phone's operating system.
- **Steering Wheel Controls Not Working:** Confirm the CAN Bus module is correctly installed and connected. Some voice button functions may not be supported.
- **Poor Microphone Quality:** Ensure the external microphone is properly connected and positioned. Check microphone settings within the unit's menu.
- **GPS Signal Loss:** Ensure the GPS antenna is securely connected and has a clear view of the sky.
- **Screen Unresponsive:** Perform a soft reset by pressing the reset button (if available) or disconnecting and reconnecting the vehicle battery.

For persistent issues, contact Eonon customer support.

7. SPECIFICATIONS

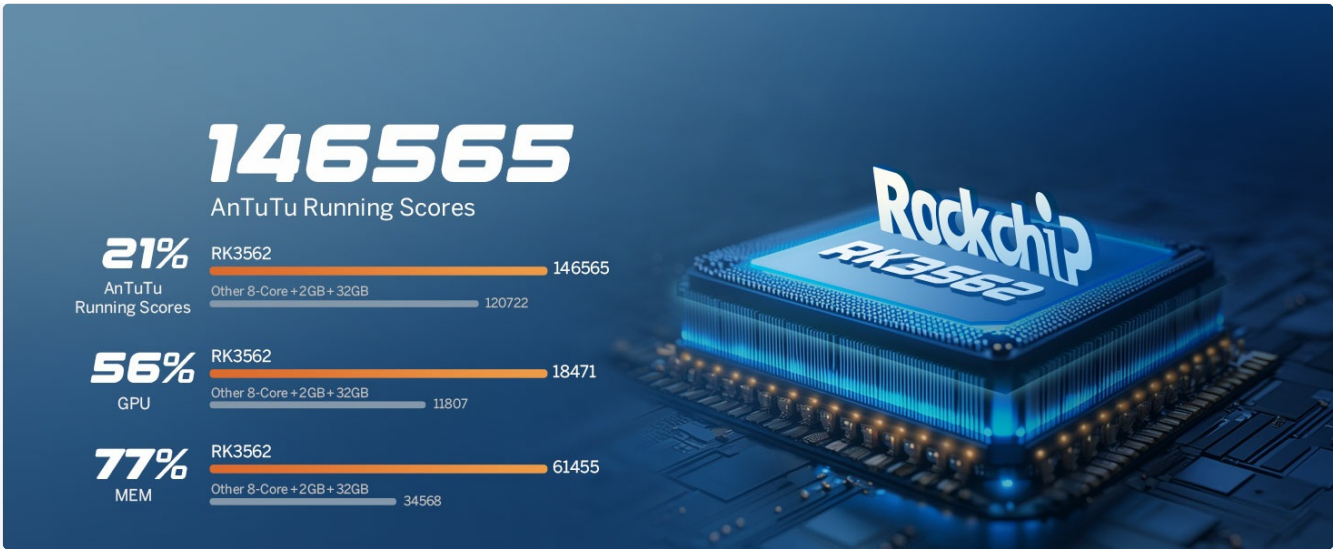


Image: Close-up of the 9-inch IPS display, highlighting its 1280x720 resolution, 2.5D capacitive touchscreen, and 178° viewing angle.

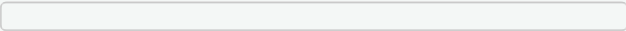


Image: Information on the Android 14 operating system and RK3562 processor, including AnTuTu running scores for performance comparison.

8. WARRANTY & SUPPORT

8.1 Warranty Information

The Eonon M3BKX7 comes with a **2-year warranty** from the date of purchase. This warranty covers manufacturing defects and malfunctions under normal use. Please retain your proof of purchase for warranty claims.






8.2 Return and Replacement Policy

- **30-Day Free Returns:** Products can be returned for a full refund within 30 days of purchase.
- **90-Day Replacement:** A replacement unit will be provided within 90 days of purchase for qualifying issues.

8.3 Customer Support

Eonon is committed to providing lifelong after-sales service. For technical assistance, troubleshooting, or warranty inquiries, please contact our customer support team. We aim to provide a quick reply within 24 hours (excluding weekends).



	<p>BMW 3 Series (E90/E91/E92/E93) 2005-2011 Eonon Head Unit Installation Manual</p> <p>Comprehensive installation manual for Eonon car stereo head units in BMW 3 Series (E90, E91, E92, E93) models manufactured between 2005 and 2011. This guide provides detailed, step-by-step instructions for removing the factory radio and air conditioning controls, wiring the new unit, and fitting it into the dashboard. It covers essential steps such as checking console compatibility, using specialized tools, connecting harnesses, and testing features.</p>
	<p>Eonon VWA12S User Manual: Features, Installation, and Operation Guide</p> <p>Comprehensive user manual for the Eonon VWA12S car infotainment system. Covers product overview, features like Wireless CarPlay and Android Auto, GPS navigation, Bluetooth, settings, and troubleshooting for your Eonon VWA12S car stereo.</p>
	<p>BMW 3 Series 2005-2011 Installation Manual</p> <p>Installation manual for the Eonon head unit in BMW 3 Series 2005-2011 (E90/E91/E92/E93) models. Provides step-by-step instructions for replacing the factory car stereo.</p>
	<p>Eonon Q63Pro Installation Manual for Mazda 3 (2010-2013)</p> <p>Detailed installation guide for the Eonon Q63Pro 9-inch Android 10 car stereo head unit in Mazda 3 vehicles (2010-2013). Covers GPS, CarPlay, Android Auto, DSP, Bluetooth, and more.</p>
	<p>Mazda 3 2004-2009 Eonon Head Unit Installation Manual</p> <p>Step-by-step installation guide for the Eonon head unit in a Mazda 3 (2004-2009 models). Covers removal of factory radio, installation of the new unit, and connecting accessories.</p>
	<p>BMW 3 Series E46 Installation Manual - Eonon Head Unit</p> <p>Step-by-step installation guide for an Eonon head unit in a BMW 3 Series 1999-2004 (E46). Covers removal of factory components and installation of the new unit.</p>



[\[pdf\]](#) Test Report

Measurement Report Kent Test report SunBoBoDigital Co Ltd GPA13 Car Media Player 2BDS8

2BDS8GPA13 gpa13

Shenzhen DL Testing Technology Co., Ltd. Report No.: DL-240904018ER FCC Part 15C Test Report FCC I ... ince Edward Road East, Kowloon, Hong Kong Car Media Player EONON GPA13 UX7, UX7-PLUS, E39X7, E46X7, **M3BKX7**, WWX7, OPX7, M3BLX7, E90X7, TYTX7, GMX7, GPX7, UX7T, UX7T-PLUS, UA13SK-PLUS, UA13SZ-PLUS, MBA...

lang:en score:15 filesize: 1.84 M page_count: 29 document date: 2024-10-16



[\[pdf\]](#) Test Report

Measurement Report Kent Test report SunBoBoDigital Co Ltd GPA13 Car Media Player 2BDS8

2BDS8GPA13 gpa13

Shenzhen DL Testing Technology Co., Ltd. Report No.: DL-240904019ER FCC Part 15C Test Report FCC I ... ince Edward Road East, Kowloon, Hong Kong Car Media Player EONON GPA13 UX7, UX7-PLUS, E39X7, E46X7, **M3BKX7**, WWX7, OPX7, M3BLX7, E90X7, TYTX7, GMX7, GPX7, UX7T, UX7T-PLUS, UA13SK-PLUS, UA13SZ-PLUS, MBA...

lang:en score:13 filesize: 3.63 M page_count: 41 document date: 2024-10-16



[\[pdf\]](#) Test Report

Measurement Report Kent Test report SunBoBoDigital Co Ltd GPA13 Car Media Player 2BDS8

2BDS8GPA13 gpa13

Shenzhen DL Testing Technology Co., Ltd. Report No.: DL-240904020ER FCC Part 15E Test Report FCC I ... ince Edward Road East, Kowloon, Hong Kong Car Media Player EONON GPA13 UX7, UX7-PLUS, E39X7, E46X7, **M3BKX7**, WWX7, OPX7, M3BLX7, E90X7, TYTX7, GMX7, GPX7, UX7T, UX7T-PLUS, UA13SK-PLUS, UA13SZ-PLUS, MBA...

lang:en score:12 filesize: 5.03 M page_count: 55 document date: 2024-10-16