

Logitech M186

Logitech M186 Wireless Mouse User Manual

Model: M186

1. INTRODUCTION

The Logitech M186 Wireless Mouse is designed for comfortable and efficient navigation. This compact, ambidextrous mouse offers reliable 2.4GHz wireless connectivity, extended battery life, and broad compatibility, making it an ideal tool for various computing environments.



Figure 1: Top view of the Logitech M186 Wireless Mouse.

2. PACKAGE CONTENTS

Ensure all items are present in the package:

- Logitech M186 Wireless Mouse

- USB Nano Receiver
- 1 AA Battery (pre-installed)
- User Documentation

3. SETUP INSTRUCTIONS

Follow these steps to set up your Logitech M186 Wireless Mouse:

1. **Remove Battery Tab:** Locate the battery compartment on the underside of the mouse. Gently pull the plastic tab to activate the pre-installed AA battery.

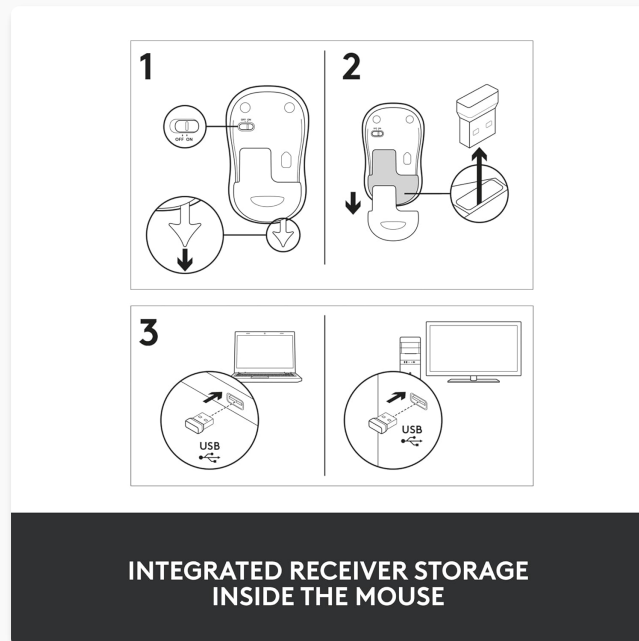


Figure 2: Diagram illustrating battery tab removal and receiver insertion.

2. **Insert USB Nano Receiver:** Remove the USB nano receiver from its storage slot within the battery compartment.

Your browser does not support the video tag.

Video 1: Unboxing and initial setup of the Logitech M186 mouse, demonstrating battery tab removal and receiver access.

3. **Connect to Computer:** Plug the USB nano receiver into an available USB port on your computer (PC, Mac, or laptop). The mouse will automatically connect and be ready for use within seconds. No additional drivers or software installation is typically required.

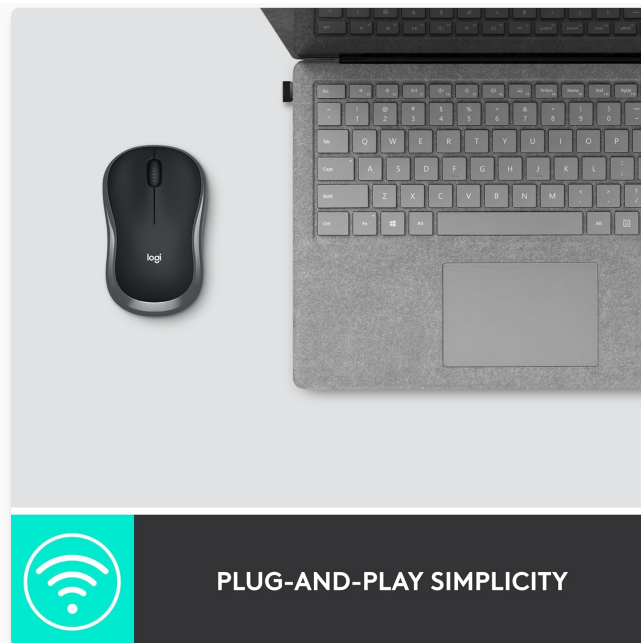


Figure 3: The mouse connects instantly via its USB nano receiver.

4. OPERATING INSTRUCTIONS

The Logitech M186 mouse features a standard three-button layout with a scroll wheel for intuitive navigation.

- **Left-Click Button:** Used for selecting items, opening files, and activating functions.
- **Right-Click Button:** Used for accessing context menus and additional options.
- **Scroll Wheel:** Used for scrolling through documents and web pages. It also functions as a middle-click button for specific applications.



Figure 4: Key features of the Logitech M186 mouse.

5. KEY FEATURES

5.1. Compact and Ambidextrous Design

The M186 mouse features a comfortable, contoured shape that fits well in both the right and left hand. Its compact

size makes it suitable for users with small to medium hands and ideal for travel or use in confined workspaces.



Figure 5: The ergonomic design ensures comfort for both left and right-handed users.

5.2. Extended Battery Life

Equipped with a smart sleep mode function, the M186 offers up to 12 months of battery life on a single AA battery. This feature helps conserve energy, reducing the frequency of battery replacements.

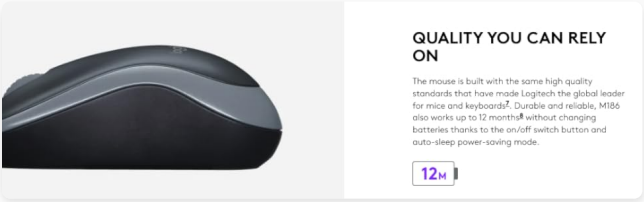


Figure 6: The M186 features a 12-month battery life.

5.3. Universal Compatibility

The Logitech M186 is universally compatible with various operating systems, including Windows PC, Mac, and laptops. This ensures seamless functionality regardless of your computer system.



Figure 7: The M186 is compatible with multiple operating systems.

5.4. Plug-and-Play Simplicity

With its tiny nano USB receiver, the M186 offers instant setup. Simply plug the receiver into a USB port, and the mouse is ready to use without any software installation. It provides a strong, reliable wireless connection up to 10 meters (33 feet).

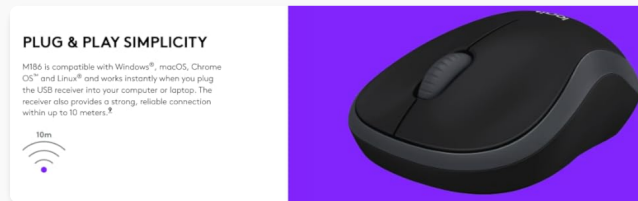


Figure 8: Plug-and-play setup for immediate use.

5.5. Enhanced Productivity

Using a mouse like the M186 can significantly enhance productivity compared to a touchpad. Studies indicate that mouse users can be up to 50% more productive and work 30% faster.



Figure 9: The M186 can boost your work efficiency.

5.6. Eco-Friendly Construction

The M186 is constructed using certified post-consumer recycled plastic, reflecting a commitment to environmental sustainability.

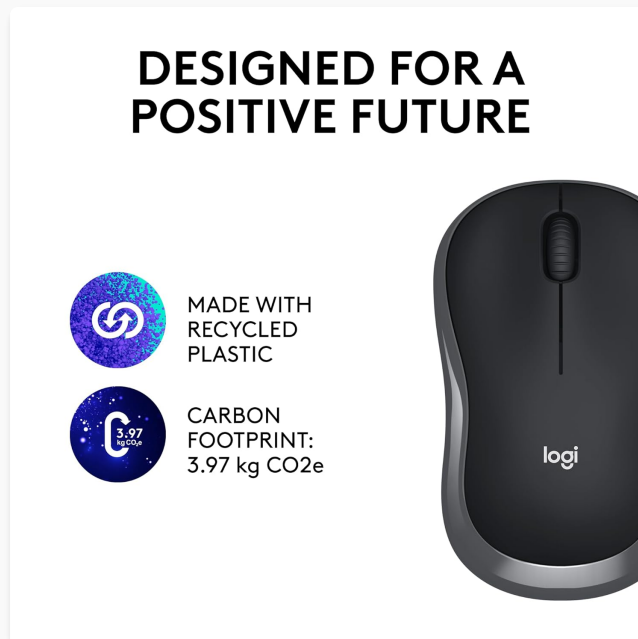


Figure 10: The M186 is made with recycled materials.

6. MAINTENANCE

To ensure optimal performance and longevity of your Logitech M186 Wireless Mouse:

- **Cleaning:** Use a soft, lint-free cloth to gently wipe the mouse surface. For stubborn dirt, slightly dampen the cloth with water. Avoid harsh chemicals or abrasive cleaners.
- **Battery Replacement:** When the mouse performance degrades or stops responding, replace the AA battery. Open the battery compartment on the underside, remove the old battery, and insert a new AA battery, ensuring correct polarity.
- **Receiver Storage:** When not in use or during travel, store the USB nano receiver inside the mouse's battery compartment to prevent loss.

7. TROUBLESHOOTING

If you encounter issues with your Logitech M186 Wireless Mouse, try the following solutions:

- **Mouse Not Responding:**
 - Ensure the mouse is powered on using the ON/OFF switch on the underside.
 - Check the battery. Replace it if necessary.
 - Verify the USB nano receiver is securely plugged into a working USB port on your computer. Try a different USB port.
 - Move the mouse closer to the receiver to rule out range issues.
- **Erratic Cursor Movement:**
 - Clean the optical sensor on the underside of the mouse with a soft, dry cloth.
 - Ensure you are using the mouse on a suitable surface. Avoid highly reflective or transparent surfaces. A mouse pad is recommended.
- **Connection Issues:**
 - If the connection is unstable, try re-pairing the mouse with the receiver. Refer to the Logitech support website for specific re-pairing instructions for the M186 model.
 - Avoid using the mouse near other wireless devices that might cause interference.

8. SPECIFICATIONS

Feature	Detail
Brand	Logitech
Model	M186
Connectivity	2.4GHz Wireless (USB Nano Receiver)
Tracking Technology	Optical Tracking (1000 DPI)
Battery Type	1 x AA Battery
Battery Life	Up to 12 Months
Design	Ambidextrous, Compact, Contoured
Wireless Range	Up to 10 meters (33 feet)
Compatibility	Windows PC, Mac, Laptop

Feature	Detail
Color	Swift Gray
Item Weight	90 g
Product Dimensions	4.2 x 10.4 x 22.2 cm
Country of Origin	China



Figure 11: Physical dimensions of the Logitech M186 mouse.

9. WARRANTY AND SUPPORT

The Logitech M186 Wireless Mouse comes with a 3-year limited hardware warranty. Please refer to the inside of the product box for further warranty details and conditions. Battery life may vary based on user and computing conditions.

For customer complaints or support, please contact Logitech Customer Care:

- **Toll-free Number:** 1800 572 4730 (9:00am to 6:00pm - Mon-Fri)
- **Email Support:** support@logi.com
- **Website:** www.logitech.com





[Logitech Marathon Mouse M705: Getting Started Guide & Features](#)

Comprehensive guide to setting up and using the Logitech Marathon Mouse M705, including features, troubleshooting, and Unifying receiver setup.

Frequently Asked Questions

[illegible]

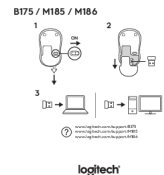
[Logitech MK295/K295 Wireless Keyboard and Mouse Combo User Guide](#)

User guide for the Logitech MK295/K295 wireless keyboard and mouse combo, covering troubleshooting, battery information, operating distance, indicator lights, storing the USB receiver, and cleaning instructions.



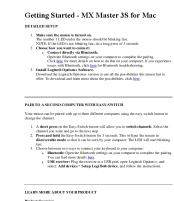
Logitech M170/M171 Wireless Mouse: Setup Guide and Features

Get started with your Logitech M170/M171 wireless mouse. This guide provides step-by-step setup instructions, details product features, and offers troubleshooting tips for reliable wireless connectivity.



Logitech B175/M185/M186 Wireless Mouse Setup Guide

A concise guide to setting up your Logitech B175, M185, or M186 wireless mouse, including battery installation and USB receiver connection.



Logitech MX Master 3S for Mac: Getting Started and Features Guide

Get started with your Logitech MX Master 3S for Mac wireless mouse. This guide covers detailed setup, Bluetooth and Easy-Switch pairing, MagSpeed scroll wheel functionality, thumb wheel and gesture button customization, app-specific settings, Logitech Flow for multi-computer use, battery charging and status, and cleaning instructions.



Logitech M170/M171/B170 Wireless Mouse Setup Guide

A setup guide for the Logitech M170, M171, and B170 wireless mice, detailing features, setup instructions, and troubleshooting.