

Manuals+

[Q & A](#) | [Deep Search](#) | [Upload](#)

[manuals.plus](#) /

> [Cooouds](#) /

> [Cooouds Garage Door Remote Control User Manual for Sears Craftsman, LiftMaster, and Chamberlain \(Purple Learn Button, Model 139.53753\)](#)

Cooouds 139.53753

Cooouds Garage Door Remote Control User Manual

MODEL: 139.53753

For Sears Craftsman, LiftMaster, and Chamberlain Openers with Purple Learn Button (2006-2013)

1. Introduction

This manual provides comprehensive instructions for the installation, programming, operation, and maintenance of your Cooouds Garage Door Remote Control. Please read this manual thoroughly before use to ensure proper functionality and safety.

2. Compatibility

This remote control is designed to work exclusively with garage door openers manufactured between 2006 and 2013 that feature a **PURPLE learn button**. It operates on a Security+ 315 MHz code type.

Compatible Brands and Models:

- **Sears Craftsman:** 139.18191, 139.18192, 139.53752, 139.53753, 139.53754, TX2028, 139.53985D, 139.53990D, HBW2028
- **LiftMaster:** 370LM, 371LM, 372LM, 373LM, 375LM
- **Chamberlain:** 950D, 953D, 956D

NOTE: This remote control does NOT have DIP switch functionality and is NOT compatible with Genie, Overhead, Linear, Raynor, Marantz, Precision, or Legacy brand garage door openers.



Figure 2.1: Visual guide for compatible purple learn button.



Figure 2.2: Detailed compatibility chart for various garage door opener models.

3. Package Contents

Your package should contain the following items:

- Garage Door Opener Remote Control x 2

- Sun Visor Clip x 2
- User Manual x 1

Multichannel

3

button design allows control of up to 3 garage door openers at once



Figure 3.1: Contents included in the product package.

4. Setup and Programming

Follow these steps to program your new remote control to your garage door opener:

1. Ensure your garage door is fully closed before beginning the programming process.
2. Locate the **PURPLE learn button** on your garage door opener's main motor head unit. This button is typically found on the back or side panel of the motor unit.
3. Press and immediately release the **PURPLE learn button** once. The learn indicator light on the motor unit will illuminate steadily for 30 seconds.
4. Within 30 seconds, press and hold the desired button on your new Coocouds remote control for approximately 4 seconds.
5. Release the button on the remote control. The motor head unit lights will blink once (or twice for some models) to indicate that the code has been successfully learned.
6. Test the remote control by pressing the programmed button. The garage door should activate.

The 3-button design allows you to control up to three different garage door openers or gate operators. Repeat the programming steps for each additional opener you wish to control with the remaining buttons.



Figure 4.1: Step-by-step guide for programming the remote control.

5. Operating Instructions

Once programmed, your Cooods remote control is ready for use.

- **Opening/Closing the Garage Door:** Press the programmed button on the remote control to activate your garage door opener. Press it again to stop or reverse the door's movement.
- **Working Range:** The remote operates effectively within a range of up to 120 feet from the garage door opener, allowing for convenient "no waiting" roll-in access.
- **Visor Clip:** Use the included sun visor clip to easily attach the remote control to your car's sun visor for convenient access while driving.

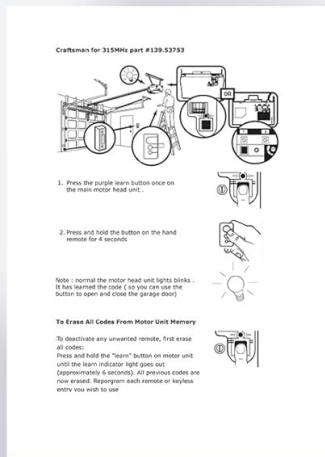
Long Distance Working Range



- ◆ 120-foot working range allows you to operate a garage door opener
- ◆ from the security of the driver's seat.
- ◆ for "no waiting" roll-in access.

Figure 5.1: Operating the remote control from inside a vehicle.

PACKAGE INCLUDES



Manual* 1



Visor Clip * 2



Remote * 2

Figure 5.2: Multichannel functionality for controlling multiple garage doors.

6. Maintenance

6.1 Battery Replacement

The remote control contains a lithium battery. When the remote's range decreases or it stops responding, the battery may need replacement.

1. To open the case, carefully pry it open using the visor clip or a small screwdriver.
2. Remove the old battery.
3. Insert a new lithium battery (Alkaline cell type) with the positive side (+) facing up.
4. Snap the case back together securely.

NOTE: Please dispose of old batteries properly according to local regulations.

7. Troubleshooting

If your remote control is not functioning as expected, consider the following:

- **Remote not responding:**

- Check the battery. Replace if necessary (refer to Section 6.1).
 - Ensure you are within the 120-foot operating range of the garage door opener.
 - Verify that the remote is correctly programmed to your opener (refer to Section 4). Reprogramming may be necessary.
- **Garage door opener not responding to programming:**
 - Confirm your garage door opener has a **PURPLE learn button** and was manufactured between 2006-2013.
 - Ensure you are pressing and releasing the learn button correctly and holding the remote button for the specified duration.
 - Check for any obstructions or interference near the garage door opener's antenna.
 - **Reduced operating range:**
 - The battery may be low. Replace the battery.
 - Environmental factors or interference can affect range.

If issues persist after attempting these troubleshooting steps, please contact customer support.

8. Specifications

Feature	Detail
Model Number	139.53753
Compatibility	Sears Craftsman, LiftMaster, Chamberlain (2006-2013, Purple Learn Button)
Frequency	315 MHz (Security+)
Number of Buttons	3
Operating Range	Up to 120 feet
Battery Type	Lithium (Alkaline cell type)
Item Weight	2.88 ounces
Package Dimensions	4.65 x 4.02 x 0.75 inches

9. Warranty and Support

Cooouds products come with a one-year warranty service. If you encounter any issues or are not satisfied with your purchase for any reason, please contact our customer service team for timely assistance.

Contact Information: Please refer to the contact details provided with your purchase documentation or visit the Cooouds official website for support.

Note: These accessories are compatible spares and are not original manufacturer parts. Brand names and related model names are used solely to demonstrate compatibility.

