

COCOCAM PK323

COCOCAM 5MP Indoor Security Camera User Manual

Model: PK323

1. INTRODUCTION

Thank you for choosing the COCOCAM 5MP Indoor Security Camera. This device is designed to provide reliable surveillance for your indoor spaces, offering high-resolution video, advanced motion detection, two-way audio communication, and flexible storage options. This manual will guide you through the installation, operation, and maintenance of your new security camera to ensure optimal performance and peace of mind.

2. PACKAGE CONTENTS

Please check the package for the following items:

- COCOCAM 5MP Indoor Security Camera (Model: PK323)
- Power Adapter
- USB Cable
- Mounting Accessories (Screws, Wall Plugs)
- User Manual (This document)



Brand: COCOCAM

Model: Pk323

Product Name: Security Camera

Product Material: ABS

Manufacturer: Langshixing Electronic(Shenzhen)Co.

Address: 2nd Floor, Building A6, Junye Industrial Park,
Tangtou Community, Shiyan Street, Baoan District,
Shenzhen, Guangdong, China

Email: service@cococamtech.com

サポートチーム: support_jp@cococamtech.com

Official Website: <http://www.cococamtech.com>

日本語ホームページ: <http://www.cococamtech.com>

FCC ID: 2AYJN-PK321

SCCH:20231017

Made in China



<http://www.cococamtech.com>

Image: Front view of the COCOCAM Security Camera retail box.



Image: Side view of the COCOCAM Security Camera retail box highlighting features like remote viewing, two-way audio, motion detection, and TF card storage.

3. PRODUCT OVERVIEW

The COCOCAM PK323 is a versatile indoor security camera designed for comprehensive monitoring. It features a compact design and robust capabilities.

Key Features:

- **5MP Resolution:** Captures clear and detailed footage.
- **Pan & Tilt:** 355° horizontal pan and 80° vertical tilt for wide coverage.
- **Dual-Band Wi-Fi:** Supports both 2.4GHz and 5GHz Wi-Fi networks for stable connection.
- **Two-Way Audio:** Built-in microphone and speaker for real-time communication.
- **AI Motion Detection & Auto Tracking:** Intelligently detects human and pet movement and tracks the subject.
- **HD IR Night Vision:** Provides clear video monitoring even in low-light conditions, visible up to 15 meters (50 ft).

- **Flexible Storage:** Supports local TF card storage (up to 128GB) and cloud storage options.
- **Alexa Integration:** Works with Amazon Alexa for voice control and live view on compatible devices.

Physical Components:

- **Camera Lens:** Main video capture component.
- **IR LEDs:** Infrared lights for night vision.
- **Microphone:** For audio input.
- **Speaker:** For audio output (two-way audio).
- **Power Port:** For connecting the power adapter.
- **Reset Button:** Used for resetting the camera to factory settings.
- **TF Card Slot:** For inserting a microSD card for local storage.



Image: The COCOCAM 5MP Indoor Camera alongside a smartphone displaying its live video feed, highlighting its 5MP and dual-band Wi-Fi capabilities.

4. SETUP GUIDE

Follow these steps to set up your COCOCAM security camera:

4.1 Download the App

1. Search for the **"CloudEdge"** app in your smartphone's app store (App Store for iOS or Google Play Store for Android).
2. Download and install the app.
3. Register for a new account or log in if you already have one.

4.2 Power On the Camera

1. Connect the provided USB cable to the camera's power port and the power adapter.
2. Plug the power adapter into a wall outlet.
3. Wait for the camera to power on. You will hear a prompt indicating it's ready for setup.

Stable 2.4GHz/5GHz WiFi Connection

Needs to be plugged into the outlet while working



Image: The COCOCAM camera plugged into an outlet, illustrating its stable 2.4GHz/5GHz Wi-Fi connection capability.

4.3 Connect to Wi-Fi

1. Open the CloudEdge app.
2. Tap the "+" icon or "Add Device" to add a new camera.
3. Select your camera model from the list (e.g., Smart Camera or PTZ Camera).
4. Follow the on-screen instructions to connect the camera to your Wi-Fi network. Ensure your phone is connected to the same Wi-Fi network (2.4GHz or 5GHz).
5. The app will display a QR code. Hold your phone's screen in front of the camera lens (approx. 15-20 cm or 6-8 inches

away) until you hear a confirmation sound from the camera.

6. Once connected, the camera's indicator light will turn solid blue, and you will receive a "Connection successful" message in the app.



Image: A sequence of screenshots from the CloudEdge app demonstrating the step-by-step process for setting up and connecting the camera to a Wi-Fi network.

4.4 Install TF Card (Optional)

If you wish to use local storage, insert a TF (microSD) card (up to 128GB) into the camera's TF card slot. Ensure the camera is powered off before inserting or removing the card. Format the card through the app settings after insertion for proper functionality.

360° of Coverage

Comprehensive view without blind spots



Image: The COCOCAM camera with icons representing cloud storage and TF card storage, emphasizing its safe and stable storage options.

5. OPERATING INSTRUCTIONS

Once set up, you can utilize the camera's features via the CloudEdge app.

5.1 Live View & Recording

- Open the CloudEdge app and select your camera from the device list to access the live view.
- You can manually record video or capture screenshots directly from the live view interface.
- The camera supports 24/7 continuous recording to a TF card or cloud storage (subscription may apply for extended cloud features).

5MP SUPER HD Resolution

Capture every story, even at night Share with your family



Image: The COCOCAM camera app interface displaying a live view of a baby and dog, with options for screenshot, hold to talk, record, and motion detection, alongside images of family members sharing access.

5.2 Two-Way Audio

- From the live view, tap the microphone icon to enable two-way audio.

- Press and hold the talk button to speak through the camera's speaker. Release to listen.

Two-way Audio

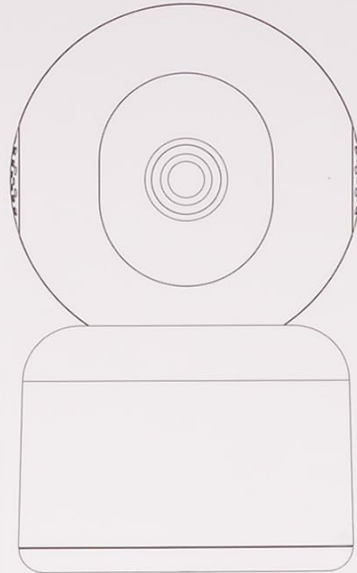
To stay in touch with family members or pets



Image: A child and a dog interacting, illustrating the two-way audio feature of the COCOCAM camera, allowing communication with family members or pets.

5.3 Pan, Tilt, and Zoom (PTZ)

- On the live view screen, use the directional controls to pan the camera horizontally (355°) and tilt it vertically (80°).
- Pinch to zoom in or out on the video feed.



EN: Please keep in a place that is not accessible to children.

DE: Bitte an einem Ort aufbewahren, der für Kinder nicht zugänglich ist.

FR: Garder hors de portée des enfants

IT: Tenere fuori dalla portata dei bambini

ES: Mantener fuera del alcance de los niños

www.cococamtech.com

日本語ホームページ: <http://www.cococamtech.com>

<http://www.cococamtech.com>

Image: The COCOCAM camera demonstrating its 360° coverage capability, providing a comprehensive view without blind spots, with a smartphone displaying the panoramic view.

5.4 AI Motion Detection & Auto Tracking

- Enable motion detection in the app settings. You can adjust sensitivity (Low, Medium, High) and set specific detection zones.
- The camera will send real-time alerts to your phone when motion is detected.
- With auto-tracking enabled, the camera will automatically follow detected movement within its field of view.

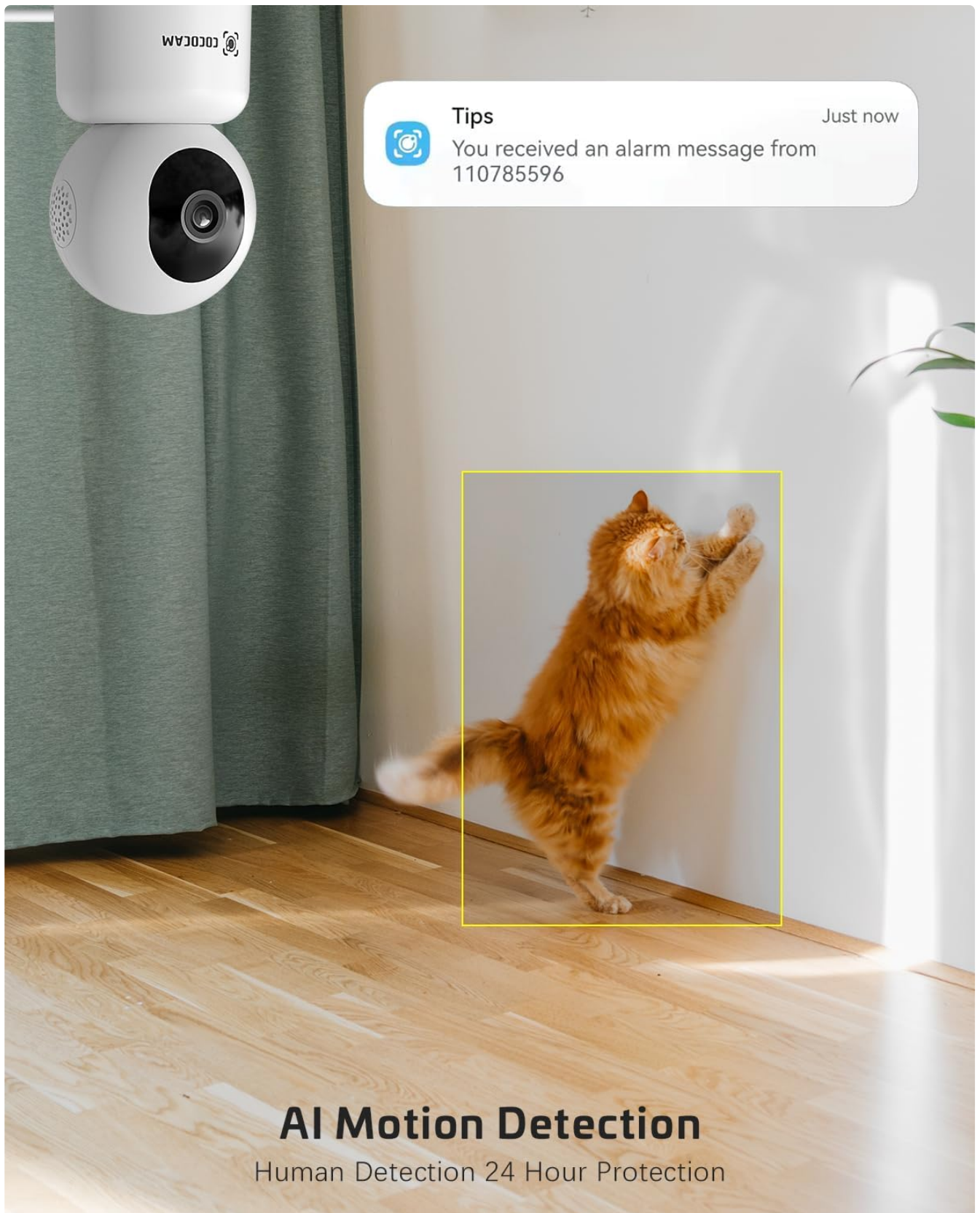


Image: The COCOCAM security camera detecting motion, with a notification pop-up on a phone screen, demonstrating its AI motion detection capabilities for human and pet activity.



Image: A screenshot of the CloudEdge app's motion detection settings, showing options to enable/disable motion detection, adjust sensitivity, set recording time, alarm interval, alert plan, and alarm area.

5.5 HD IR Night Vision

- The camera automatically switches to night vision mode in low-light conditions.
- Infrared LEDs provide clear black-and-white video up to 15 meters (50 ft) in complete darkness.

AI Motion Detection

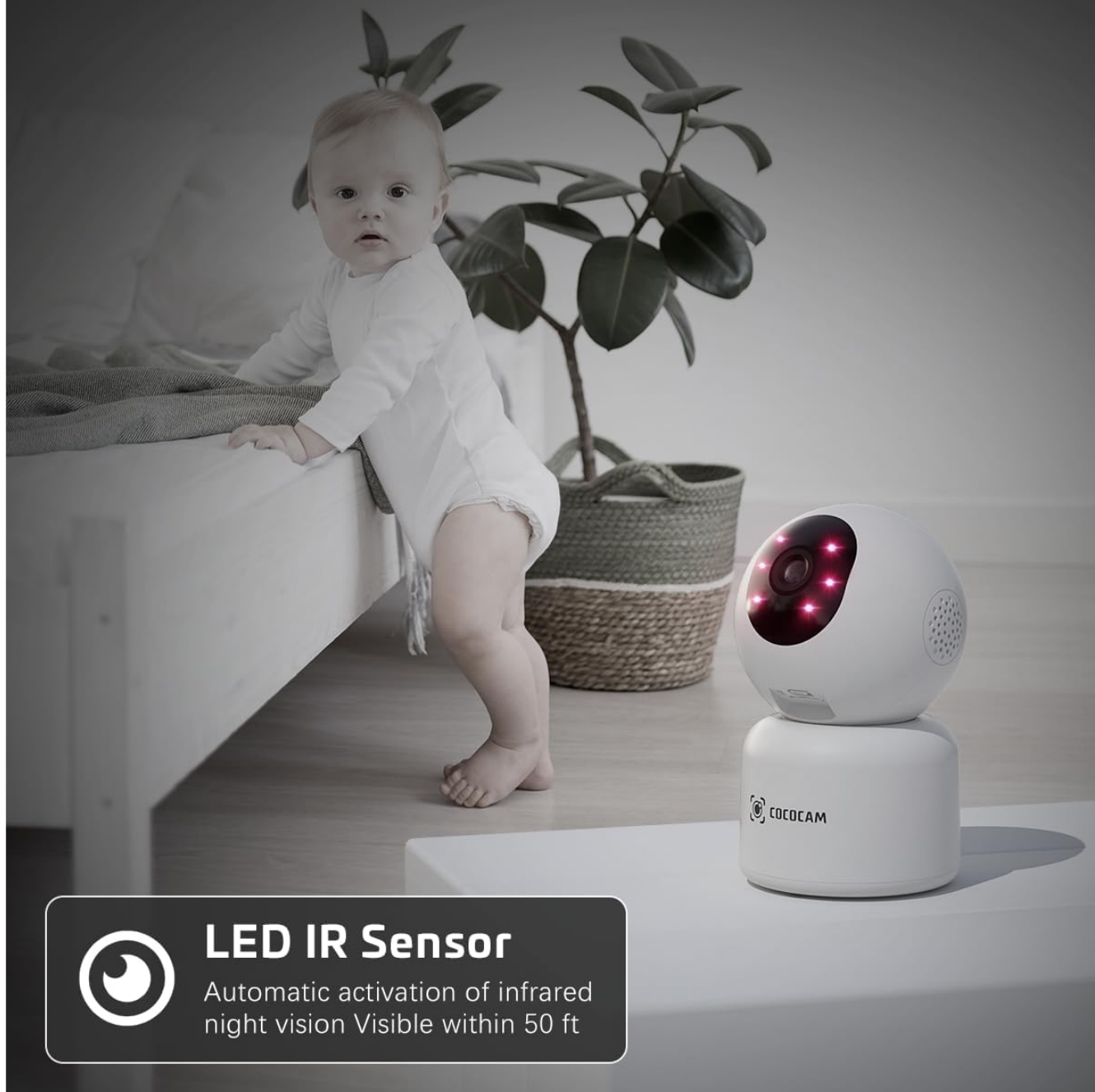


Image: The COCOCAM camera with its infrared LEDs active, providing clear night vision in a dimly lit room, suitable for monitoring a baby.

5.6 Camera Sharing

- You can share access to your camera's live feed with family members or trusted individuals through the CloudEdge app.
- Go to the camera settings and find the "Share Device" option to invite others.



Image: Multiple family members viewing the camera feed on various devices (smartphone, tablet, laptop), illustrating the multi-user sharing feature.

5.7 Works with Alexa

- Integrate your COCOCAM camera with Amazon Alexa for convenient voice control.
- Enable the CloudEdge skill in the Alexa app and link your accounts.
- You can then use voice commands like "Alexa, show me the front door" (if named accordingly) to view the live feed on compatible Echo Show devices.



Image: An Amazon Echo Show device displaying the live feed from the COCOCAM camera, demonstrating its compatibility with Alexa for voice-controlled viewing.

6. MAINTENANCE

To ensure the longevity and optimal performance of your COCOCAM camera, follow these maintenance tips:

- **Cleaning:** Gently wipe the camera lens and body with a soft, dry cloth. Avoid using harsh chemicals or abrasive cleaners.
- **Placement:** Ensure the camera is placed in a stable location, away from direct sunlight, extreme temperatures, and high humidity.
- **Firmware Updates:** Regularly check the CloudEdge app for available firmware updates to ensure your camera has the

latest features and security enhancements.

- **Power Supply:** Use only the original power adapter provided with the camera.

7. TROUBLESHOOTING

If you encounter issues with your COCOCAM camera, refer to the following common problems and solutions:

Problem	Possible Cause	Solution
Camera offline	No power, Wi-Fi disconnected, poor Wi-Fi signal.	Check power connection. Restart camera and router. Ensure camera is within Wi-Fi range. Reconnect camera in app.
Cannot connect to Wi-Fi	Incorrect Wi-Fi password, wrong Wi-Fi band (only 2.4GHz/5GHz supported), too far from router.	Verify Wi-Fi password. Ensure you are connecting to a 2.4GHz or 5GHz network. Move camera closer to router. Reset camera and try again.
Poor image quality	Dirty lens, insufficient lighting, network bandwidth issues.	Clean the camera lens. Ensure adequate lighting or check night vision settings. Check your internet speed.
Motion alerts not received	Motion detection disabled, app notifications off, incorrect sensitivity settings.	Enable motion detection in app. Check phone notification settings for CloudEdge app. Adjust motion detection sensitivity.
TF card not recording	Card full, card not formatted, faulty card.	Format the TF card in the app. Replace with a new TF card if necessary. Ensure continuous recording is enabled.

8. SPECIFICATIONS

Feature	Specification
Model	PK323
Video Capture Resolution	5MP (1440p)
Pan/Tilt Range	355° Pan, 80° Tilt
Wireless Communication	Bluetooth, Wi-Fi (2.4GHz/5GHz)
Night Vision Range	15 Meters (50 ft)
Storage Options	TF Card (up to 128GB), Cloud Storage
Power Source	Corded Electric (5 Volts, 3 Watts)
Material	Acrylonitrile Butadiene Styrene (ABS)

Feature	Specification
Item Dimensions (L x W x H)	7.8 x 7.8 x 11.5 cm
Weight	300 g
Compatible OS	iOS, Android
Recommended Use	Indoor Security

9. WARRANTY AND SUPPORT

COCOCAM is committed to providing high-quality products and excellent customer service.

9.1 Lifetime Warranty

Your COCOCAM camera comes with a lifetime warranty, ensuring long-term peace of mind. Please retain your proof of purchase for warranty claims.


9.2 Customer Support

For any technical assistance, questions, or concerns, please contact COCOCAM customer support. We offer 24/7 professional technical support to address your needs promptly.

- **Email:** service@cococamtech.com
- **Official Website:** www.cococamtech.com

100% privacy data security


Strong video encryption ensures your data security and privacy



Supports powerful cloud storage services



Supports TF card up to 128GB



Note: Format the card before use

Image: A smiling customer service representative wearing a headset, symbolizing COCOCAM's commitment to customer support.

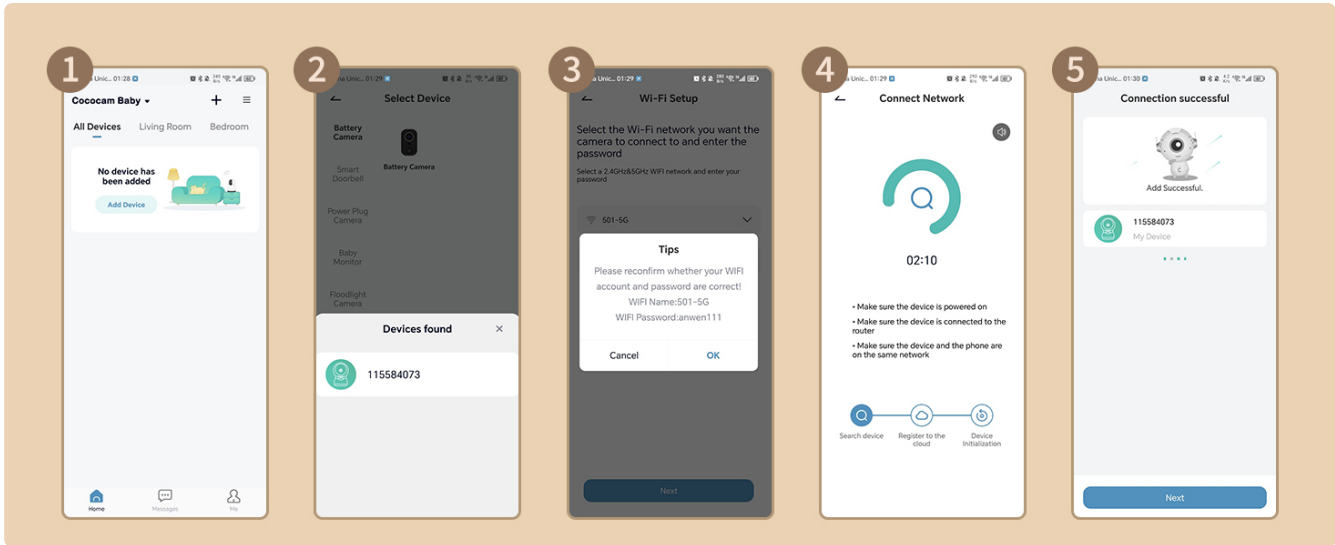





Image: An illustration emphasizing 100% privacy data security with strong video encryption, supported by powerful cloud storage services and TF card storage up to 128GB.

© 2024 COCOCAM. All rights reserved.
For more information, visit www.cococamtech.com

Related Documents - PK323

	<p>Cococam 2K Outdoor Surveillance Camera User Manual</p> <p>Comprehensive user manual for the Cococam 2K Outdoor Surveillance Camera, covering setup, installation, app integration, and troubleshooting. Learn how to mount, connect, and operate your wireless security camera.</p>
	<p>COCOCAM Security Camera Operating Instructions</p> <p>Comprehensive operating instructions for the COCOCAM Security Camera, covering installation, setup, features, and troubleshooting.</p>
	<p>COCOCAM Smart Baby Monitor User Manual</p> <p>Comprehensive user manual for the COCOCAM Smart Baby Monitor (Model: SCSMS-20250411). Learn how to install, set up, connect the app, use features, and troubleshoot your baby monitor.</p>
	<p>COCOCAM Wire-Free Rechargeable Security Battery Camera User Guide</p> <p>Comprehensive user guide for the COCOCAM Wire-Free Rechargeable Security Battery Camera, covering setup, app installation, features, and troubleshooting.</p>

 The image shows the front cover of a user guide for the Cococam PTZ Wireless Security Camera. It features the Cococam logo at the top, followed by the product name in Italian and English. Below the title is a line drawing of the camera. At the bottom, there is contact information for Cococam, including an email address and a website URL.	<p>Cococam PTZ Wireless Security Camera with Rechargeable Battery User Guide</p> <p>User guide for the Cococam PTZ Wireless Security Camera with Rechargeable Battery, covering product details, installation, app setup, device menu, PIR detection, alarm notifications, night vision, and troubleshooting.</p>
 The image shows the front cover of a user guide for the Cococam ZY-C7 Wireless PTZ Security Camera. It features the Cococam logo at the top, followed by the product name in Italian and English. Below the title is a line drawing of the camera. At the bottom, there is contact information for Cococam, including an email address and a website URL.	<p>Cococam ZY-C7 Wireless PTZ Security Camera User Guide</p> <p>User guide for the Cococam ZY-C7 Wireless PTZ Security Camera with Rechargeable Battery. This guide covers product details, installation, app setup, camera operation, features like PIR detection and night vision, and troubleshooting.</p>