

Greesum GS-LCW0305BN

Greesum Acacia Outdoor Bench with Foldable Table

Model: GS-LCW0305BN

Brand: Greesum

1. SAFETY INFORMATION

Please read and understand all instructions before assembly and use. Keep this manual for future reference.

- **Weight Limit:** Do not exceed the maximum weight capacity of 350 pounds (approximately 158 kg) for the bench.
- **Assembly:** Always assemble the bench according to the provided instructions. Ensure all screws are tightened securely after assembly.
- **Stability:** For outdoor use, ensure the bench is placed on a stable, level surface to prevent tipping.
- **Environmental Exposure:** Avoid exposing the bench to extreme weather conditions (e.g., heavy rain, prolonged direct sunlight, snow) to prolong its lifespan. Consider using a protective cover when not in use.
- **Children:** Supervise children around the bench, especially when the foldable table is in use or being adjusted.

2. PACKAGE CONTENTS

Verify that all components are present before beginning assembly.

- 1 x Greesum Acacia Outdoor Bench
- 1 x Tool Kit (for assembly)
- 1 x Product Description and Installation Instruction Manual

3. SPECIFICATIONS

Feature	Detail
Model Number	GS-LCW0305BN
Material	Acacia Wood

Color	Nature (Original Wood)
Product Dimensions (D x W x H)	55.12" x 20.5" x 34.6" (140cm x 52cm x 88cm)
Item Weight	35.5 lbs (16.1 kg)
Seating Capacity	2-3 persons (depending on table position)
Maximum Weight Recommendation	350 lbs (158 kg)
Assembly Required	Yes
Included Components	Foldable Small Table Board

4. SETUP AND ASSEMBLY

The Greesum Acacia Outdoor Bench is designed for straightforward assembly. It is recommended that two people complete the assembly process, which typically takes about 30 minutes.

- 1. Unpack Components:** Carefully remove all parts from the packaging. Lay them out on a clean, soft surface to prevent scratches.
- 2. Identify Parts:** Refer to the included installation instruction manual to identify each component and hardware.
- 3. Initial Fastening:** Begin by loosely screwing the screws into the pre-drilled holes as indicated in the manual. Do not fully tighten any screws until all parts are correctly aligned.
- 4. Final Tightening:** Once all components are in place and aligned, gradually tighten all screws securely. Avoid over-tightening to prevent damage to the wood.
- 5. Stability Check:** After assembly, gently shake the bench to ensure it is stable and all connections are firm.



Image 1: Product Dimensions. This image illustrates the overall dimensions of the Greesum Acacia Outdoor Bench, including its length (55.1 inches), depth (20.5 inches), and height (34.6 inches). It also indicates a weight capacity of 350 lbs.

5. OPERATING INSTRUCTIONS

The Greesum Acacia Outdoor Bench features a versatile foldable table for enhanced functionality.

5.1. Using the Foldable Table

The bench includes a central foldable table panel, ideal for holding beverages, books, or small items.

- **To Deploy:** Gently pull the central slatted section upwards. The support legs will unfold automatically. Ensure the table is fully extended and stable before placing items on it.
- **To Retract:** Carefully push the table section downwards. The support legs will fold back into the bench frame, allowing for continuous seating.



NATURAL ACACIA WOOD

Eco-friendly

Easy to Assemble

Easy to clean

Heavy-duty Frame

Image 2: Foldable Table Mechanism. This image provides a detailed view of the foldable table board, highlighting its serrated design for easy pulling and the metal hooks used to secure it in the flat position. It demonstrates how the desktop can be reversed or folded away.

5.2. Seating Configuration

The bench can accommodate different seating arrangements:

- **Two-Person Seating with Table:** With the foldable table deployed, the bench comfortably seats two individuals, one on each side of the table.
- **Three-Person Seating:** When the foldable table is retracted and flat, the bench provides continuous seating for up to three individuals.

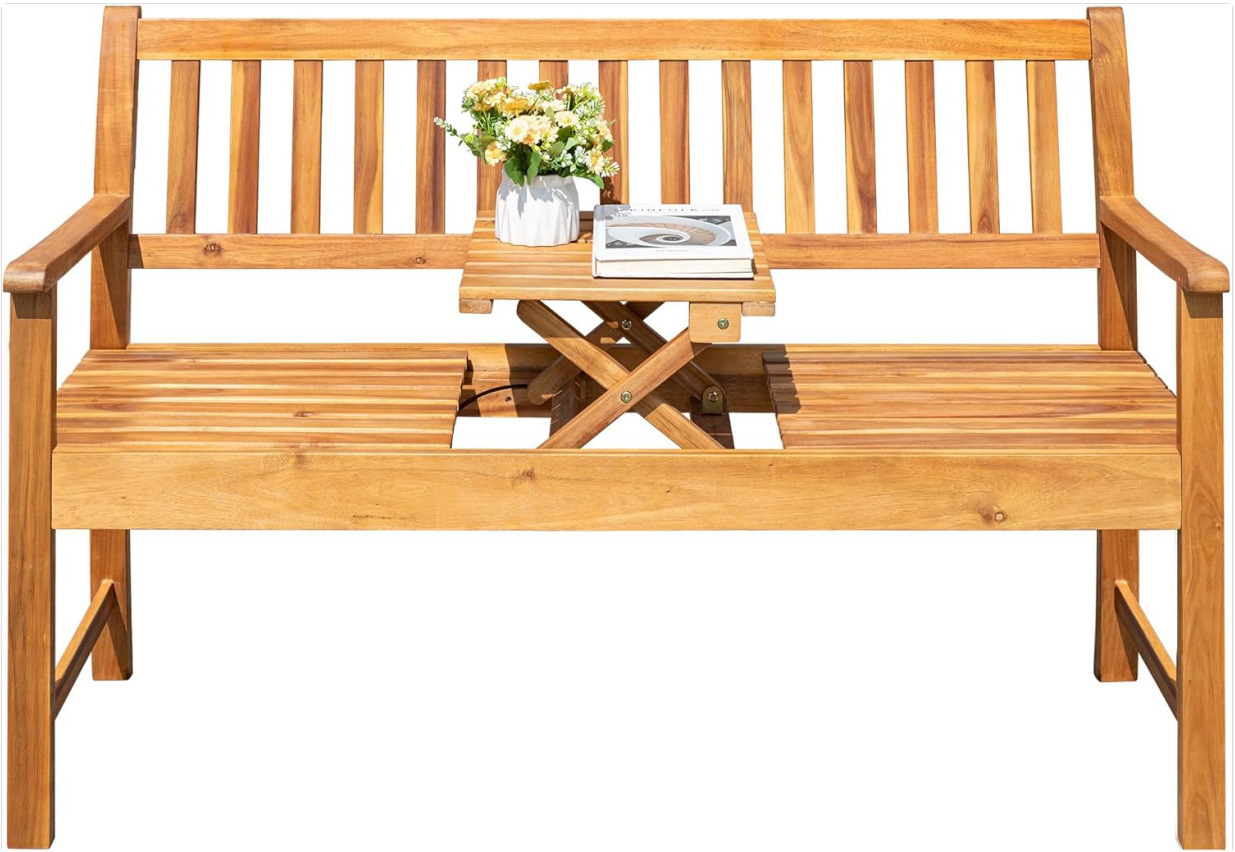
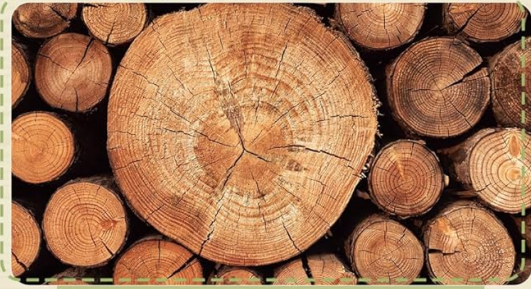


Image 3: Bench with Table Deployed. This image shows the Greesum Acacia Outdoor Bench in an outdoor setting, with the central foldable table extended. Two decorative cushions are placed on the seats, and a small plant and cups are on the table, demonstrating its use for two people.



**High-Quality
Processing**



**Eco-friendly
Wood**

DIMENSIONS



Image 4: Bench with Table Retracted. This image displays the Greesum Acacia Outdoor Bench with its central table folded down, creating a continuous seating surface. A blanket and cushions are arranged on the bench, suggesting comfortable seating for multiple individuals.

6. MAINTENANCE

Proper care will help maintain the appearance and longevity of your Greesum Acacia Outdoor Bench.

- **Cleaning:** The bench surface is waterproof. Use a soft, dry cloth to wipe down the bench regularly. For stubborn dirt, a damp cloth with mild soap can be used, followed by thorough drying.
- **Wood Care:** As the bench is made of 100% solid acacia wood, it can be stained or treated to match your desired aesthetic or to provide additional protection against the elements.
- **Protection:** To prevent fading and wear from prolonged sun exposure or moisture, consider applying a wood sealant or placing the bench under a covered area when not in use.

7. TROUBLESHOOTING

If you encounter any issues with your Greesum Acacia Outdoor Bench, refer to the following common solutions:

- **Bench Wobbles:** Ensure all screws are fully and evenly tightened. Check that the bench is placed on a flat, stable surface.
- **Table Mechanism Sticks:** Check for any debris or obstructions in the folding mechanism. Apply a small amount of silicone-based lubricant if necessary, ensuring it is safe for wood.
- **Wood Discoloration/Fading:** This is natural for outdoor wood furniture. Regular cleaning and application of a wood sealant or stain can restore and protect the finish.
- **Missing Parts:** If any parts were missing upon delivery, contact Greesum customer support immediately.

8. WARRANTY AND SUPPORT

Specific warranty details are not provided in the product information. For warranty claims, technical support, or replacement parts, please contact Greesum customer service directly through their official website or the retailer where the product was purchased.

Keep your purchase receipt and model number (GS-LCW0305BN) handy when contacting support.