



[Manuals.plus](#) /

> [GYMAX](#) /

> GYMAX Wall-Mounted Outdoor Umbrella Instruction Manual, Model TU25823GJ+IT

GYMAX TU25823GJ+IT, TU25823YS+IT

GYMAX Wall-Mounted Outdoor Umbrella Instruction Manual

Model: TU25823GJ+IT, TU25823YS+IT

IMPORTANT SAFETY INFORMATION

Please read all instructions carefully before assembly and use. Retain this manual for future reference.

- Ensure the umbrella is securely mounted to a sturdy wall surface, such as concrete, capable of supporting its weight and wind loads.
- Do not use the umbrella in strong winds or severe weather conditions. Close and secure the umbrella when not in use or during adverse weather.
- Keep children and pets away from the umbrella during operation to prevent accidents.
- Regularly inspect all components for wear, damage, or loose connections. Do not use if any part is damaged.
- Avoid placing the umbrella near open flames or heat sources.

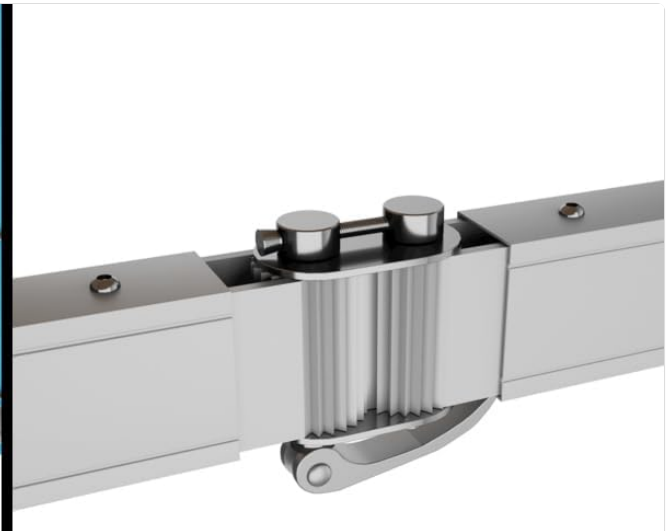
PACKAGE CONTENTS

Verify that all components are present before beginning assembly:

- Wall-Mounted Umbrella Canopy and Frame Assembly
- Wall Mounting Bracket and Hardware
- Instruction Manual



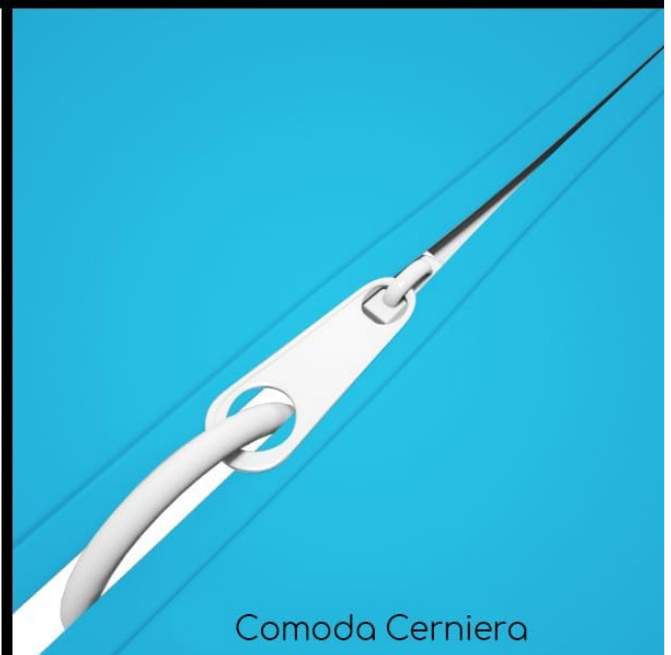
Nervature in Alluminio Durevoli



Polo Regolabile ad Alta Resistenza



Connessione Salda



Comoda Cerniera

Image: Detailed view of the umbrella's durable aluminum ribs, adjustable pole mechanism, solid wall connection, and convenient zipper closure.

SPECIFICATIONS

Brand	GYMAX
Model	TU25823GJ+IT, TU25823YS+IT
Cover Material	Polyester (Waterproof, UV50+ Sun Resistant, Wind Resistant Level 3-4)
Frame Material	Aluminum Alloy
Dimensions (Diameter)	250 cm (approx. 98.4 inches)
Weight	7 kg (approx. 15.4 lbs)

Special Features	UV Resistant, Adjustable Angle (350° horizontal rotation, 30° vertical tilt), Easy to Install and Store
-------------------------	---

SETUP AND INSTALLATION

The GYMAX wall-mounted umbrella is designed for easy installation on a sturdy wall, such as concrete. All necessary accessories are included.

1. **Choose Location:** Select a suitable wall location that can support the umbrella's weight and provide desired shade coverage. Ensure the wall material is appropriate for secure mounting.
2. **Mark Drilling Points:** Use the wall mounting bracket as a template to mark the drilling points on the wall.
3. **Drill Holes:** Drill holes at the marked points using an appropriate drill bit for your wall type.
4. **Attach Bracket:** Securely attach the wall mounting bracket to the wall using the provided hardware. Ensure it is level and firmly fixed.
5. **Mount Umbrella:** Carefully attach the umbrella frame assembly to the installed wall bracket. Follow the detailed instructions provided in the included manual for specific steps.
6. **Test Stability:** After installation, gently test the umbrella's stability to ensure it is securely mounted before full use.



Design Salvaspazio per Montaggio a Parete



Basta Chiudere l'Ombrellone con una Zip

Image: The umbrella mounted on a wall, demonstrating its space-saving design when extended and its compact form when folded using the zipper closure.

OPERATING INSTRUCTIONS

The GYMAX wall-mounted umbrella offers flexible shading options:

- **Opening the Umbrella:** Gently extend the umbrella canopy from its folded position. Ensure all ribs are fully extended and locked into place.
- **Horizontal Rotation:** The umbrella can rotate up to 350 degrees horizontally. Adjust the position by gently turning the umbrella arm to direct shade where needed.
- **Vertical Tilt:** The umbrella head can be tilted up to 30 degrees vertically. Use the tilt mechanism to adjust the angle of the canopy for optimal sun protection throughout the day.
- **Closing the Umbrella:** To close, reverse the opening procedure. Ensure the canopy is fully retracted and secured, ideally using the integrated zipper closure for compact storage.



Image: Illustration of the umbrella's adjustable features, including 350 degrees of horizontal rotation and 30 degrees of vertical tilt, allowing for precise shade positioning.

MAINTENANCE

Proper maintenance will extend the life of your GYMAX umbrella:

- **Cleaning the Canopy:** Clean the polyester canopy regularly with mild soap and water. Rinse thoroughly and allow to air dry completely before folding or storing. Do not use harsh chemicals or abrasive cleaners.
- **Cleaning the Frame:** Wipe the aluminum frame with a damp cloth to remove dirt and dust. Dry thoroughly to prevent water spots.
- **Lubrication:** Periodically apply a silicone-based lubricant to moving parts (e.g., rotation and tilt mechanisms) to ensure smooth operation.
- **Inspection:** Regularly check all screws, bolts, and connections to ensure they are tight. Inspect the canopy for any tears or damage.

STORAGE

When not in use, especially during off-season or severe weather, store the umbrella properly:

- **Clean and Dry:** Ensure the canopy is clean and completely dry before folding to prevent mold and mildew.
- **Fold Compactly:** Use the integrated zipper closure to fold the umbrella compactly against the wall.
- **Cover (Optional):** Consider using a protective cover (not included) to shield the umbrella from dust, dirt, and prolonged exposure to elements.



Image: The umbrella shown in its folded position against a wall, demonstrating its space-saving storage capability when not in use.

TROUBLESHOOTING

Problem	Possible Cause	Solution
Umbrella does not open/close smoothly.	Mechanisms are dry or obstructed.	Apply silicone lubricant to moving parts. Check for any debris or obstructions.
Umbrella feels unstable after installation.	Mounting hardware is loose or wall is not sturdy enough.	Re-tighten all mounting screws. Ensure the wall material is appropriate and structurally sound. Consult a professional if unsure.
Canopy shows signs of wear or fading.	Prolonged exposure to harsh elements.	Regular cleaning and proper storage when not in use can help. Consider a protective cover.

WARRANTY AND SUPPORT

For warranty information and customer support, please refer to the retailer's return and warranty policies at the point of purchase. General return policies typically allow returns within 30 days of receipt if you change your mind. For defective or damaged products, specific assistance is available through the retailer's help pages.

For further assistance, please contact GYMAX customer service through the official GYMAX store or website.

Manufacturer: GYMAX

Country of Origin: China