

ZUYIYI PKC0509

ZUYIYI Cordless Pressure Washer User Manual

Model: PKC0509

1. INTRODUCTION

Thank you for choosing the ZUYIYI Cordless Pressure Washer. This portable power cleaner is designed for efficient and convenient cleaning tasks, compatible with Makita 18V lithium-ion batteries (not included). It offers a maximum water pressure of 970 PSI and a 32.8-foot spray distance, making it suitable for various applications without the need for cords or outlets.



Image: ZUYIYI Portable Cordless Power Washer overview.

2. SAFETY INFORMATION

Please read and understand all safety warnings and instructions before operating this product. Failure to follow the warnings and instructions may result in electric shock, fire, and/or serious injury.

- Always wear appropriate personal protective equipment, including eye protection, when operating the pressure washer.
- Do not direct the water stream at people, pets, or electrical devices. High-pressure spray can cause injury.
- Ensure the battery is securely installed and removed when not in use or during maintenance.

- Keep children and bystanders away from the operating area.
- Do not operate the pressure washer in explosive atmospheres, such as in the presence of flammable liquids, gases, or dust.
- Always use a water filter to prevent debris from entering the pump and causing damage.

3. PACKAGE CONTENTS

Verify that all items listed below are included in your package:

- Cordless Pressure Washer Unit
- 6-IN-1 Nozzle
- 16.4ft Hose
- Inlet Connector
- 300ml Foam Pot
- Water Filter
- User Manual

Note: Batteries are not included with the bare tool package.



Image: All components included in the package.

4. SETUP INSTRUCTIONS

Follow these steps to assemble and prepare your pressure washer for use:

1. **Attach the 6-IN-1 Nozzle:** Insert the 6-IN-1 multifunction nozzle into the front port of the pressure washer unit. Twist until it clicks securely into place.
2. **Connect the Hose:** Attach one end of the 16.4ft hose to the water inlet port on the pressure washer unit using the inlet connector. Ensure a tight fit.
3. **Install the Water Filter:** Connect the other end of the hose to the water filter. The filter is crucial for preventing impurities from entering the pump.
4. **Prepare Water Source:** Place the water filter end of the hose into your desired water source (e.g., bucket, pool, river). Ensure the filter is fully submerged.
5. **Insert Battery:** If using a Makita 18V battery, slide it into the battery slot on the pressure washer until it locks. (Battery not included).

Your browser does not support the video tag.

Video: Visual guide on how to install the pressure washer components.

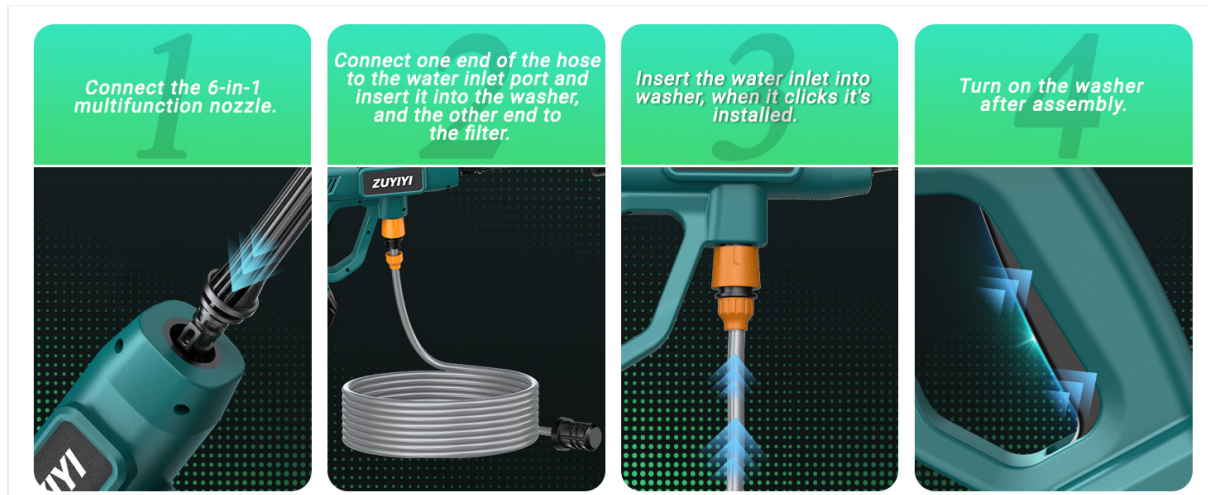


Image: Step-by-step installation guide for the pressure washer.

5. OPERATING INSTRUCTIONS

Once assembled and connected to a water source, your ZUYIYI Cordless Pressure Washer is ready for operation:

1. **Prime the Pump:** Before turning on, ensure the hose is filled with water to prevent air from entering the pump. This helps maintain optimal pressure and prolongs pump life.
2. **Select Nozzle Setting:** Rotate the 6-IN-1 nozzle to select the desired spray pattern (0°, 15°, 25°, 40°, fan-shaped, or shower mode).
3. **Turn On:** Press the power button or trigger to start the pressure washer.
4. **Begin Cleaning:** Direct the spray towards the surface you wish to clean, maintaining a safe distance to avoid damage.
5. **Adjust as Needed:** Change nozzle settings or distance from the surface to achieve the desired cleaning effect.
6. **Using the Foam Pot:** For soap application, attach the 300ml foam pot to the nozzle. Fill it with appropriate cleaning solution.

Your browser does not support the video tag.

Video: Demonstration of how to use the cordless pressure washer for various cleaning tasks.



Image: Cordless pressure washer tackling tough stains on a car.

6. NOZZLE FUNCTIONS

The 6-IN-1 nozzle provides versatility for different cleaning needs:

- **0° Enhanced Nozzle:** For concentrated, high-impact cleaning of stubborn stains on fences, decks, and oil spots.

- **15° Small Angle Nozzle:** Ideal for cleaning outdoor stacks, floor tiles, and patios.
- **25° Fan Nozzle:** Suitable for general cleaning of swimming pools, grills, and gutters.
- **40° Wide Nozzle:** Best for daily cleaning of vehicles, ports, and yards, providing broader coverage.
- **Fan-shaped Mode:** For rinsing foam, cleaning doors, and windows, and removing surface dust.
- **Shower Mode:** Gentle spray for bathing pets, watering vegetables, crops, yards, and lawns.



Image: The 6-in-1 adjustable nozzle with various spray patterns.



Image: Using the soap nozzle for cleaning.

7. MAINTENANCE

Regular maintenance ensures optimal performance and longevity of your pressure washer:

- **Clean the Water Filter:** After each use, remove and clean the water filter to ensure unrestricted water flow and prevent pump damage.
- **Rinse After Use:** Flush the pressure washer with clean water after using detergents or chemicals to prevent residue buildup.
- **Store Properly:** Store the unit in a dry, frost-free environment. Disconnect the battery and drain all water from the hose and unit before storage.
- **Check Connections:** Periodically inspect all connections for leaks or damage. Replace worn parts as needed.

8. TROUBLESHOOTING

If you encounter issues, refer to the following common troubleshooting tips:

- **Low Pressure:**
 - Check if the water filter is clogged and clean it.
 - Ensure the hose is fully submerged in the water source and free of kinks.
 - Verify the battery is fully charged.
 - Ensure the pump is primed (filled with water before starting).
- **No Water Flow:**
 - Confirm the water source has sufficient water.
 - Check for blockages in the hose or nozzle.
 - Ensure all connections are secure.
- **Unit Not Starting:**
 - Check battery charge and proper installation.
 - Ensure the power switch/trigger is fully engaged.

9. SPECIFICATIONS

Product Dimensions	24 x 8 x 3 inches
Item Weight	4.4 pounds
Model Number	PKC0509
Power Source	Battery Powered (Compatible with Makita 18V)
Hose Length	5 Meters (16.4 feet)
Max Water Pressure	970 PSI
Spray Distance	32.8 feet

10. WARRANTY AND SUPPORT

For warranty information or technical support, please refer to the documentation included with your purchase or contact ZUYIYI customer service directly. Protection plans are available for purchase separately through Amazon, offering extended coverage for 2 or 3 years, or a monthly complete protect plan.

