

[Manuals.plus](#) /

> [GLACER](#) /

> GLACER 12000BTU Mini AC Split-System User Manual

GLACER Mini AC Split-System

GLACER 12000BTU Mini AC Split-System User Manual

Model: Mini AC Split-System (12000BTU, 220V, 17 SEER2)

Brand: GLACER

IMPORTANT SAFETY INSTRUCTIONS

Please read this manual thoroughly before installation and operation. Keep this manual for future reference.

- **Professional Installation Required:** The installation of this mini split air conditioner must be completed by a Licensed HVAC Installer. Attempting self-installation can lead to serious injury, property damage, and void the product warranty.
- Ensure the power supply matches the unit's specifications (AC 220V~60Hz/1PH).
- Do not block air inlets or outlets of the indoor or outdoor units.
- This unit uses R32 refrigerant, which is flammable. Ensure proper ventilation during installation and servicing.
- Do not insert fingers or objects into the air outlet when the unit is operating.
- Disconnect power before performing any maintenance or cleaning.

PRODUCT OVERVIEW

The GLACER 12000BTU Mini AC Split-System offers a versatile 4-in-1 design, providing year-round comfort with cooling, heating, dehumidifying, and fan-only modes. It features a built-in 1-ton heat pump for efficient temperature control.



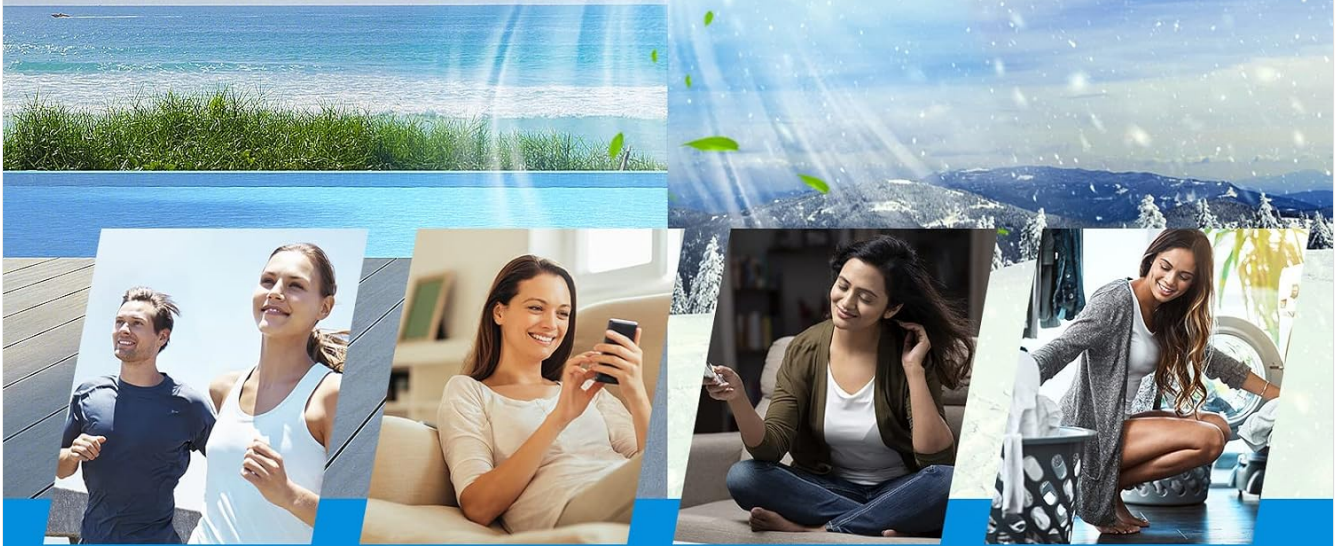
Figure 1: Overview of the GLACER Mini AC Split-System, including the indoor unit, outdoor unit, remote control, and connection components.

Key Features:

- **Efficient Cooling & Heating:** 12000 BTU capacity for both cooling and heating, suitable for areas up to 750 sq. ft.
- **4-in-1 Functionality:** Cool, Heat, Fan, and Dry (Dehumidify) modes.
- **Adjustable Temperature:** Range from 60°F to 90°F.
- **Multiple Fan Speeds:** Low, Medium, High, and Auto settings.
- **Innovative DC Inverter:** Ensures energy efficiency and quiet operation (indoor noise level: 42 dB).
- **Self-Cleaning Function:** Maintains air quality and unit efficiency.
- **iFeel Function:** Smartly senses room temperature for personalized comfort.
- **Auto Defrost:** Prevents damage to the outdoor unit in cold conditions.
- **Golden Fin:** Enhances heat transfer performance and durability.
- **ETL and AHRI Certifications:** Ensures safety and quality standards.

4-in-1 Multifunctional Design

Provides you with all - year-round comfort



Cool

Cools to as low
as 60°F

Heat

Heats to as high
as 90°F

Fan

Low/Medium/High/
Auto Speed

Dry

Dehumidification
capacity: 36 pints/day

Figure 2: The 4-in-1 multifunctional design provides year-round comfort.

High Efficient Cooling & Heating



Figure 3: High efficient cooling and heating capabilities for spaces up to 750 sq. ft.

Included Components:

- 1 x Outdoor unit
- 1 x Indoor unit
- 1 x Power line
- 2 x Copper & aluminum connection pipes
- 1 x Drain hose
- 1 x Communication wires
- 1 x Remote Control
- 1 x Tape
- 1 x Putty
- 1 x User Guide (this manual)

Product Accessories

Due to the large size, the AC unit will be shipped in 2 separate boxes and the delivery time may vary per box.



Figure 4: All accessories included for the GLACER Mini AC Split-System.

TECHNICAL SPECIFICATIONS

Specification	Value
Color	White
Indoor Unit Size (L x W x H)	31" x 8" x 11.5"
Outdoor Unit Size (L x W x H)	29" x 11" x 21"
Net Weight of Indoor Unit	23 lbs
Net Weight of Outdoor Unit	60 lbs
Cooling Capacity	12000 BTU
Heating Capacity	12000 BTU
Cooling Power	1200W
Heating Power	1120W
Coverage Area	750 sq. ft.
Air Flow Rate	165 CFM / 600 m³/h
Voltage	AC 220V~60Hz/1PH
Dehumidifying Capacity	36 pints/day

Specification	Value
Temperature Setting Range	60°F~90°F
Refrigerant	R32
Timer	0.5-24 hours
Indoor Noise Level	42 dB
Outdoor Noise Level	51 dB
SEER2 Rating	17
HSPF2 Rating	8.5
EER2 Rating	10

12000 BTU Inverter Split Air Conditioner



Cooling capacity: 12000 BTU

Heating capacity: 12000 BTU

Cooling power: 1180W

Heating power: 1080W

Voltage: 208-230V~60Hz/1PH

Air Flow: 1354 CFM

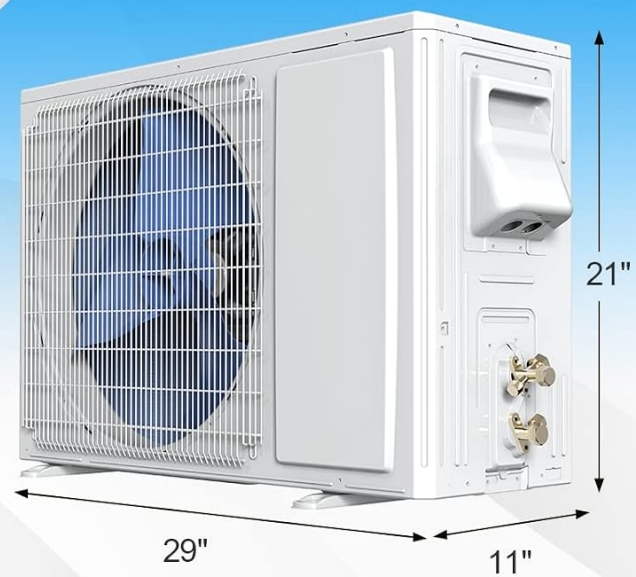


Figure 5: Detailed dimensions and specifications for the 12000 BTU Inverter Split Air Conditioner.

SETUP AND INSTALLATION

WARNING: Installation of this mini split air conditioner requires specialized knowledge and tools. It must be performed by a **Licensed HVAC Installer** to ensure safety, proper function, and to maintain warranty validity. Improper installation can result in electrical shock, fire, water leakage, or other hazards.

General Installation Steps (for professional reference):

1. **Site Selection:** Choose appropriate locations for both indoor and outdoor units, considering air circulation, drainage, and structural support.
2. **Mounting:** Securely mount the indoor unit to the wall and the outdoor unit on a stable, level surface.
3. **Piping Connection:** Connect the copper and aluminum connection pipes between the indoor and outdoor units. Ensure all connections are tight and leak-free.
4. **Electrical Wiring:** Connect the power line and communication wires according to the wiring diagram provided in the full installation manual. Ensure proper grounding.
5. **Vacuuming and Charging:** Evacuate the refrigerant lines to remove air and moisture. The unit comes pre-charged with R32 refrigerant; additional charging may be required depending on line length.
6. **Drainage:** Install the drain hose to ensure proper condensate removal from the indoor unit.
7. **Leak Check:** Perform a thorough leak check on all connections.
8. **Test Run:** After installation, perform a test run to ensure all functions operate correctly.

OPERATING INSTRUCTIONS

Your GLACER Mini AC Split-System can be controlled via the included remote control, Wi-Fi connectivity (via a mobile app), or voice control (with compatible smart home devices like Alexa).

Remote Control Functions:



Full Control with Handy Remote Control

26 ft effective control distance

Figure 6: The remote control provides full control over your unit from up to 26 ft away.

- **ON/OFF Button:** Powers the unit on or off.
- **MODE Button:** Cycles through operating modes: Auto, Cool, Dry, Heat, Fan.
- **SET Temperature Buttons (▲/▼):** Adjusts the desired temperature.
- **SPEED Button:** Selects fan speed: Low, Medium, High, Auto.
- **SWING Buttons:** Controls the vertical and horizontal airflow direction.
- **SLEEP Mode:** Adjusts temperature and fan speed for comfortable sleep, reducing noise.
- **TIMER Function:** Set the unit to turn on or off automatically within a 0.5-24 hour period.
- **iFEEL Function:** Activates the remote's built-in temperature sensor to optimize comfort based on your immediate surroundings.
- **ECO Mode:** Optimizes energy consumption for efficient operation.
- **DISPLAY Button:** Toggles the display on the indoor unit.

Enjoy a Sweet Dream

Breathing

10dB

Library

30dB

Max Noise Level

41dB

Talking

60dB

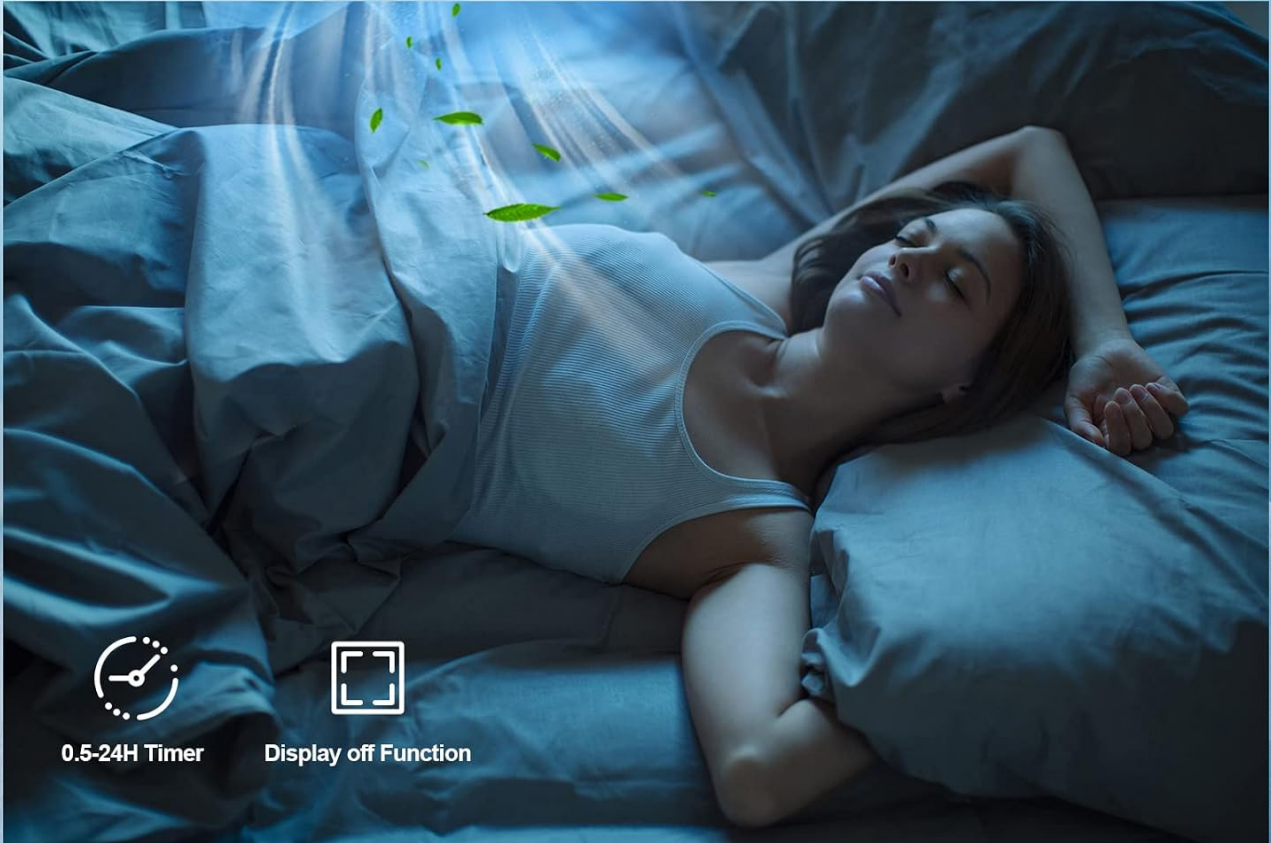


Figure 7: The low noise level (42 dB) and timer function contribute to a peaceful night's sleep.

MAINTENANCE AND CARE

Regular maintenance ensures optimal performance and longevity of your GLACER Mini AC Split-System.

Filter Cleaning:

The indoor unit is equipped with a washable filter. It is recommended to clean the filter every two weeks or more frequently depending on usage and air quality.

1. Turn off the unit and disconnect power.
2. Open the front panel of the indoor unit.
3. Carefully remove the air filters.
4. Wash the filters with lukewarm water and a mild detergent. Rinse thoroughly.

5. Allow the filters to air dry completely before reinserting them. Do not expose to direct sunlight.
6. Reinstall the filters and close the front panel.

Self-Cleaning Function (iClean):

The unit features an iClean function that automatically cleans the evaporator coil, helping to prevent mold and bacteria buildup and ensuring fresh, clean air. Refer to your remote control or mobile app instructions for activating this feature.



Condensation

Frost

Melting

Sterilization

Self-Cleaning at 135°F

Deep sterilization brings you and your family fresh air

Removable & Washable Filter

Figure 8: The self-cleaning function at 135°F provides deep sterilization for fresh air.

Seasonal Maintenance:

- Before long periods of non-use, run the unit in fan-only mode for a few hours to dry the internal components.
- Clean the outdoor unit's coils and fins from debris and dust. This should ideally be done by a professional.
- Check for any obstructions around the outdoor unit.

TROUBLESHOOTING GUIDE

If you encounter issues with your GLACER Mini AC Split-System, refer to the following common troubleshooting steps. For more complex problems, consult a Licensed HVAC Installer or GLACER customer support.

Problem	Possible Cause	Solution
Unit does not turn on	No power; Remote control batteries dead; Circuit breaker tripped.	Check power supply; Replace remote batteries; Reset circuit breaker.
Insufficient cooling/heating	Dirty air filter; Blocked air intake/outlet; Incorrect mode setting; Room size too large.	Clean air filter; Clear obstructions; Select correct mode; Ensure unit matches room size.
Unusual noise	Loose parts; Obstruction in fan; Unit not level.	Contact professional for inspection; Check for debris; Ensure stable mounting.
Water leakage from indoor unit	Clogged drain hose; Improper installation angle.	Clear drain hose; Contact professional for re-installation check.

For error codes displayed on the unit, refer to the comprehensive troubleshooting section in the full user manual.

WARRANTY AND CUSTOMER SUPPORT

Your GLACER 12000BTU Mini AC Split-System is backed by a **5-year manufacturer warranty**, providing peace of mind regarding product defects and performance issues under normal use.

For warranty claims, technical assistance, or any questions not covered in this manual, please contact GLACER customer support. Have your product model number and purchase date ready when contacting support.

For the most up-to-date contact information, please visit the official GLACER website or refer to the contact details provided with your purchase documentation.