



[Manuals.plus](#) /

> [MAXDONE](#) /

> MAXDONE Trail Camera WiFi Game Camera - 1440P 32MP Trail Camera with No Glow Night Vision Motion Activated Waterproof IP66 Trail Cam for Wildlife Deer Scouting Hunting or Property User Manual

## MAXDONE PH820W

# MAXDONE Trail Camera WiFi Game Camera User Manual

Model: PH820W | Brand: MAXDONE

## 1. INTRODUCTION

Thank you for choosing the MAXDONE PH820W WiFi Trail Camera. This camera is designed for capturing high-quality photos and videos of wildlife or for security monitoring. Featuring 32MP photo resolution, 1440P video, no-glow night vision, and a rapid 0.2s trigger speed, it ensures you capture every important moment. With WiFi and Bluetooth connectivity, you can easily manage and view your media via a mobile application. This manual provides detailed instructions to help you set up, operate, and maintain your trail camera for optimal performance.



*The MAXDONE PH820W WiFi Trail Camera, showcasing its compact design, included 32GB SD card, and smartphone connectivity for remote viewing.*

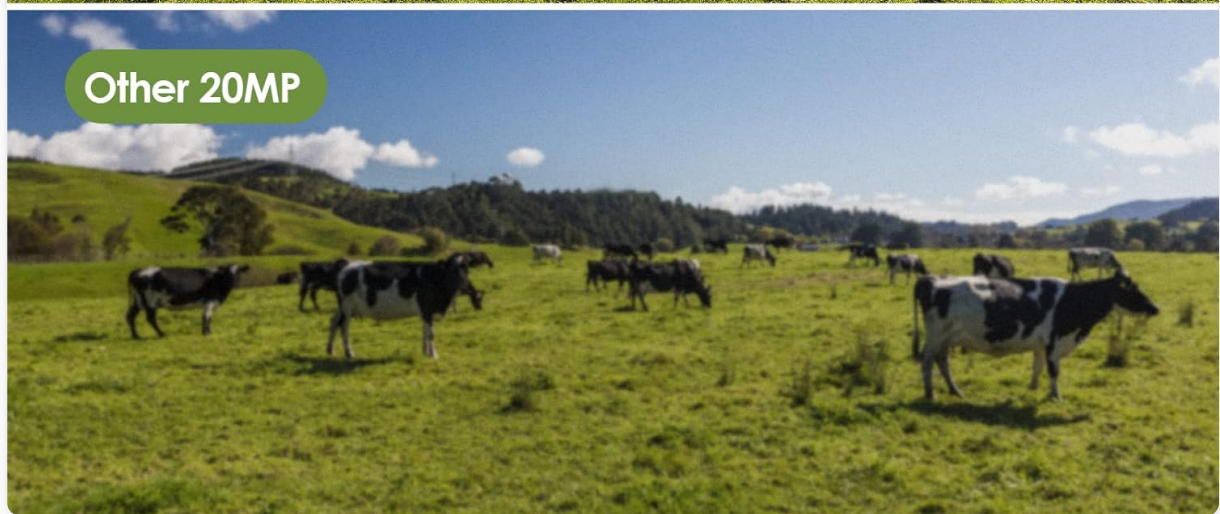
## 2. KEY FEATURES

---

- **32MP HD Photo Resolution:** Provides clearer and more realistic images of your subjects.

# 32MP HD Photo Resolution

Provide clearer and more realistic images to show you the amazing animal world



*Comparison of 32MP photo resolution versus 20MP, demonstrating enhanced clarity.*

- **1440P Sharper Video Resolution:** Delivers crisp image clarity and video with audio.

# 1440P Sharper Video Resolution

Provides crisp image clarity and video with audio

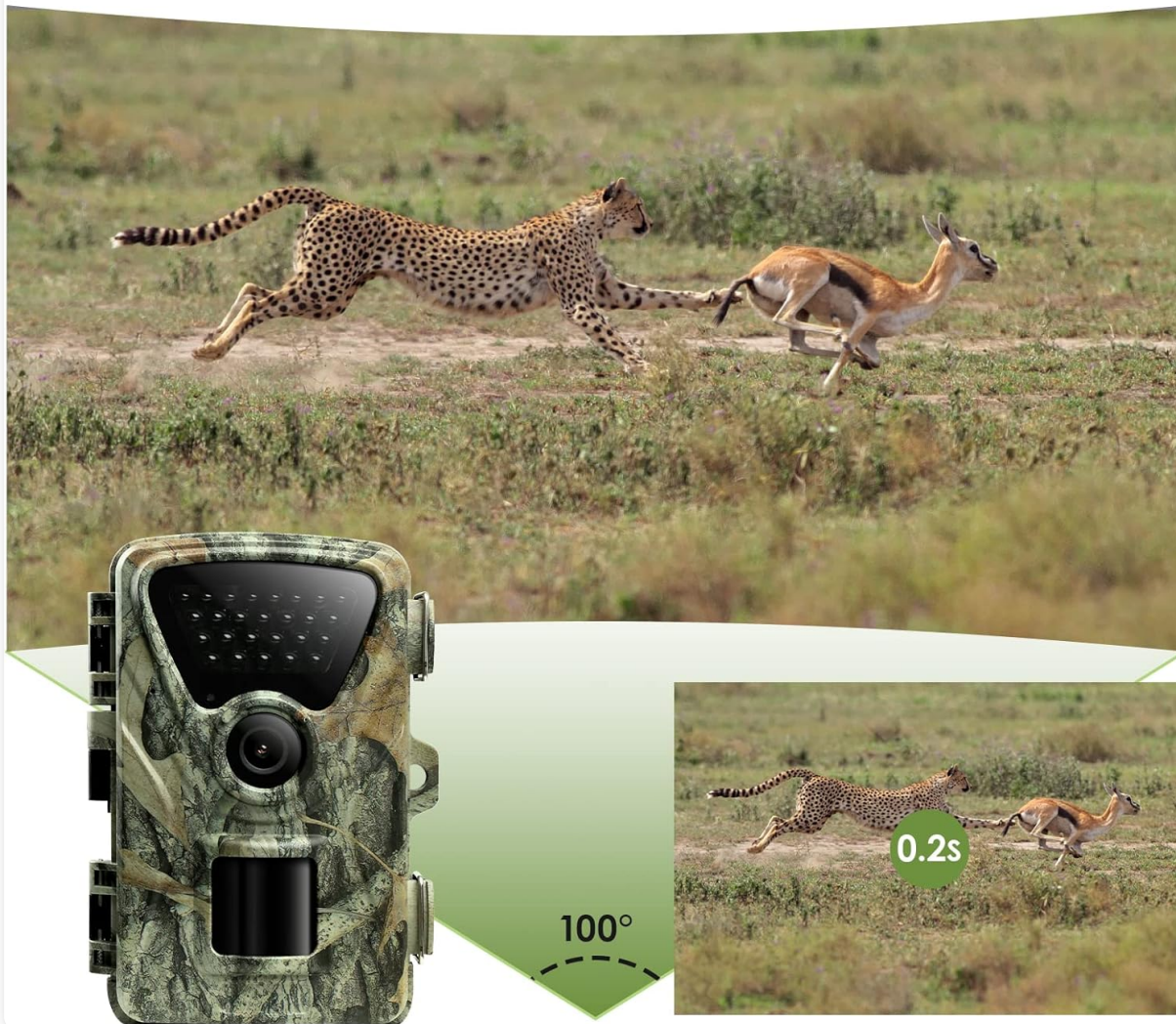


*Comparison of 1440P video resolution versus 1080P, highlighting improved detail.*

- **Ultra-Fast 0.2s Trigger Speed:** Ensures you don't miss any exciting moments with a 100° wide-angle detection area.

# Ultra Fast 0.2s Trigger Speed

Don't miss any exciting moment, 100° Wide Angle Detection Area



*The camera's 0.2-second trigger speed captures fast-moving subjects within its 100-degree detection zone.*

- **Excellent Night Shooting Capabilities:** Equipped with 26pcs 940nm infrared LEDs for ultra-clear no-glow night vision up to 65ft (20M).

# Excellent Night Shooting Capabilities

26pcs 940nm infrared LEDs support ultra clear night vision



65ft (20M)  
IR Flash



940 nm  
No-Emitting LED



0.2s Trigger  
Speed



*Demonstration of the camera's night vision, showing a clear image of a ram in low light conditions.*

- **IP66 Waterproof Performance:** The one-piece design ensures better water and dust resistance, suitable for various weather conditions.

# IP66 Waterproof Performance

The one-piece design ensures better water and dust resistance.



Rainproof



Snowproof



Dustproof



*The camera's IP66 rating ensures durability against rain, snow, and dust.*

- **WiFi & Bluetooth Connectivity:** Connect through the dedicated app to view real-time photos and videos.

# WiFi & Bluetooth

Connect to WiFi and Bluetooth functions through APP and view real-time photos and videos



WiFi



Bluetooth

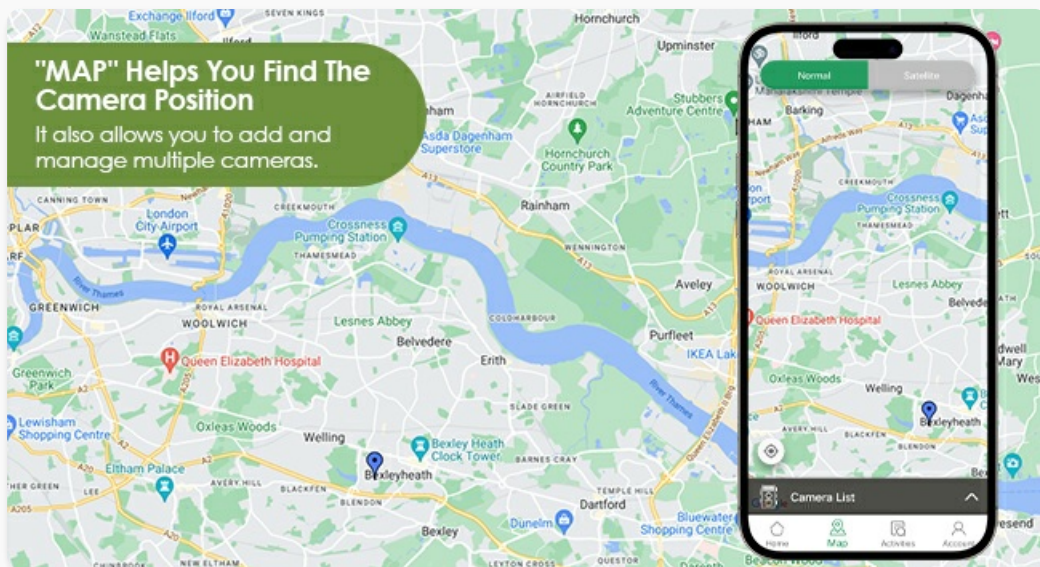


## Notice:

The WiFi connection range is within 45 ft (approximately 14 meters) and is clear of obstructions such as walls and glass doors.

*Seamless connectivity via WiFi and Bluetooth allows for remote monitoring and media access.*

- **Smart Motion Filter Function:** Helps reduce false triggering, optimizing battery life and storage.



*The smart motion filter function minimizes unwanted recordings.*

- **Time Lapse Function:** Capture changes over extended periods.



• Help Hunters Observe Animals

*Utilize the time-lapse feature to observe gradual changes in the environment.*

### 3. PACKAGE CONTENTS

---

Please check the package contents upon opening to ensure all items are present:



*All components included in the MAXDONE PH820W Trail Camera package.*

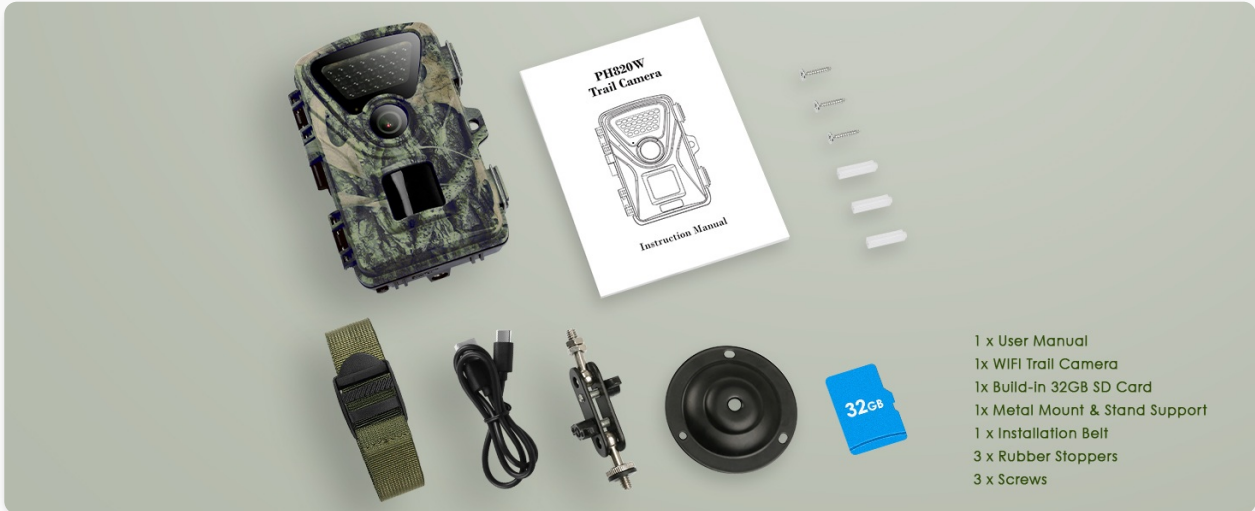
- 1 x MAXDONE PH820W WiFi Trail Camera
- 1 x User Manual
- 1 x Built-in 32GB SD Card
- 1 x Metal Mount & Stand Support
- 1 x Installation Belt
- 3 x Rubber Stoppers
- 3 x Screws

## 4. SETUP GUIDE

### 4.1 Power Supply

The camera requires **8 x 1.5V AA Alkaline or Lithium batteries** (not included). For extended battery life, it is recommended to use all 8 battery slots. The camera can also be powered by an external **6V, 1.5-2A DC**

**power adapter** with a 3.5 x 1.35mm coax DC power plug, or **a6V, 1.5-2A solar charging panel** (neither are included). Please note that using an external DC power plug or solar charging board will affect the IP66 waterproof performance if the port is not properly sealed.



*Various power supply options for the MAXDONE PH820W Trail Camera.*

## 4.2 SD Card Installation

A 32GB Micro SD card is included with your camera. The camera supports Micro SD memory cards up to 256GB. Insert the Micro SD card into the designated slot with the gold contacts facing down until it clicks into place.

## 4.3 Mounting the Camera

Use the provided installation belt or the metal mount and stand support with screws and rubber stoppers to secure the camera to a tree, pole, or other stable surface. Ensure the camera is positioned to capture the desired area without obstruction.

## 4.4 App Download

To utilize the WiFi and Bluetooth features, download the dedicated mobile application. Scan the QR codes below or visit the respective app stores:

**For Android:**



[Download Android App](#)

**For iPhone (iOS):**



[Download iOS App](#)

*QR codes for downloading the companion mobile application.*

## 5. OPERATING INSTRUCTIONS

### 5.1 Basic Operation

Refer to the included user manual for detailed instructions on powering on/off the camera and selecting different operating modes (e.g., Photo, Video, Photo+Video, Time Lapse).

### 5.2 Connecting via WiFi & Bluetooth

Once the camera is powered on, activate its WiFi and Bluetooth. Open the installed mobile app on your smartphone. The app will guide you through connecting to the camera via Bluetooth first, then establishing a WiFi connection for faster data transfer. The WiFi connection range is approximately 45 feet (14 meters) and can be affected by obstructions like walls and glass doors.

### 5.3 Viewing and Managing Media

You have several options to view and manage the captured photos and videos:

- **On-Camera Screen:** Use the built-in 2.0-inch TFT LCD color monitor to review media directly on the camera.
- **Through Mobile App:** Connect via the app to view and download pictures and videos directly to your smartphone.
- **Connect to Computer:** Use the provided Type-C USB cable to connect the camera directly to a computer to access files.
- **Using a Card Reader:** Remove the Micro SD card from the camera and insert it into a card reader connected to your computer for direct file access.

# WiFi TRAIL CAMERA

Manufacturer: Shenzhen Zecre Technology CO.,Ltd

Address: RM 501 BLDG B AREA C SHANGXUE INDUSTRIAL PARK,

XINXU E COMMUNITY, BANTIAN, LONGGANG, SHENZHEN CHINA

(+86) 0755-28367890 US:+1(323) 250-0585 UK:+44 20 3287 2598

Email: support@viptrailcam.com

GB AR

**YH Consulting Limited**

C/O YH Consulting Limite Office 147, Centurion House,  
London Road, Staines-upon-Thames, Surrey, TW18 4AX

EC REP

**E-CrossStu GmbH**

Mainzer Landstr.69, Frankfurt am Main, Hessen, 60329

CE FC RoHS ISO9001 ISO14001



\* The picture is for reference, please make the object as the standard \*

Made In China

*Multiple methods for viewing and accessing media from your trail camera.*

## 5.4 Advanced Settings (via App)

The mobile app allows for detailed configuration of camera settings, including motion detection sensitivity, recording duration, time-lapse intervals, and scheduling specific operating hours. The app also features a 'MAP' function to help you find the camera's position and manage multiple cameras.



*The app's map feature assists in locating and managing your cameras.*

## 6. MAINTENANCE

- **Cleaning:** Regularly clean the camera lens and PIR sensors with a soft, dry cloth to ensure clear images and proper motion detection.
- **Waterproof Seals:** Periodically inspect the rubber seals around the camera casing and battery compartment to ensure they are free from dirt or damage, maintaining the IP66 waterproof rating.
- **Battery Replacement:** Replace all batteries simultaneously when the low battery indicator appears to ensure consistent power.
- **Storage:** When not in use for extended periods, remove batteries and store the camera in a cool, dry place.

## 7. TROUBLESHOOTING

### **Camera not powering on:**

Ensure batteries are inserted correctly with the correct polarity. Check if batteries are fully charged. If using external power, verify the adapter is connected and functional.

### **Poor image/video quality:**

Clean the camera lens. Ensure the camera is stable and not subject to excessive vibration. Check lighting conditions; adjust camera placement if necessary. Verify that the camera settings (resolution) are set to your desired quality.

### **WiFi/Bluetooth connection issues:**

Ensure the camera's WiFi/Bluetooth is enabled. Make sure your smartphone is within the 45-foot (14-meter) connection range and there are no significant obstructions. Restart both the camera and your smartphone's app. Re-pair the devices if necessary.

### **Camera not detecting motion or false triggers:**

Adjust the PIR sensor sensitivity settings in the app. Ensure there are no heat sources or moving objects (like swaying branches) directly in front of the sensor that could cause false triggers. Clear any obstructions from the sensor's view.

### **SD card errors:**

Ensure the SD card is properly inserted. Try formatting the SD card using the camera's menu or a computer (this will erase all data). If errors persist, try a different compatible SD card.

## 8. SPECIFICATIONS

<b>Model Number</b>	PH820W
<b>Photo Resolution</b>	32MP (interpolated), 24MP, 20MP, 16MP, 12MP, 8MP, 5MP, 3MP, 2MP
<b>Video Resolution</b>	1440P, 1080P, 720P (H.264 format)
<b>Trigger Speed</b>	0.2 seconds
<b>Detection Area</b>	100° Wide Angle
<b>Night Vision</b>	26pcs 940nm No-Emitting IR LEDs, 65ft (20M) IR Flash Range
<b>Waterproof Rating</b>	IP66
<b>Display</b>	2.0-inch TFT LCD Color Monitor
<b>Storage</b>	Micro SD Card (up to 256GB, 32GB included)
<b>Power Supply</b>	8 x 1.5V AA Alkaline or Lithium batteries (not included); Optional 6V, 1.5-2A DC external power or solar panel (not included)
<b>Connectivity</b>	Wi-Fi, Bluetooth
<b>Dimensions</b>	Approx. 1 x 1 x 1 inches (2.54 x 2.54 x 2.54 cm)
<b>Weight</b>	1.24 pounds (0.56 kg)

## 9. WARRANTY AND SUPPORT

The MAXDONE PH820W WiFi Trail Camera comes with a **1-year warranty** from the date of purchase. This warranty covers manufacturing defects and ensures the product functions as intended under normal use. For technical support, warranty claims, or any inquiries regarding your product, please contact our customer support team:

- **Email:** [support@viptrailcam.com](mailto:support@viptrailcam.com)

Please provide your product model number (PH820W) and a detailed description of the issue when contacting support to ensure a prompt resolution.

# WiFi TRAIL CAMERA

- Photo Resolution: Interpolated 32MP/24MP/20MP/16MP/8MP/4MP/2MP
- Video Resolution: Interpolated 1440P/1080P/720P
- File format: H.264
- Built-in 26 pcs IR LED for 20 meter (65 feet) night vision range
- Trigger Time: approximately 0.2 to 0.6 second
- 2.0 inch TFT LCD color monitor
- Full automatic IR filter
- PIR design for sensing angle maximum 100°
- Support Micro SD memory card up to 256GB
- Functions: Multi-shot, Interval, Time lapse, Timer, Password protection, Timing photos, Alarm at low battery power
- Waterproof standard IP66

**1-year warranty (support@viptrailcam.com)**



Trail camera



Color image in daytime



Black & white image at night

