

[Manuals.plus](#) /

> [Keylessbest](#) /

> Keylessbest Replacement Key Fob Remote Control Instruction Manual for Infiniti Q50 Q60 (Model KR5TXN7)

## Keylessbest KR5TXN7

# Keylessbest Replacement Key Fob Remote Control Instruction Manual

Model: KR5TXN7 for Infiniti Q50 & Q60

## INTRODUCTION

This manual provides comprehensive instructions for the Keylessbest KR5TXN7 replacement key fob remote control. Please read this manual thoroughly before attempting to use or program the device to ensure correct operation and to avoid potential issues.





Image: Front view of the Keylessbest KR5TXN7 5-button key fob remote control.

## VEHICLE COMPATIBILITY

The Keylessbest KR5TXN7 key fob remote control is compatible with the following Infiniti vehicle models and years:

- 2020-2023 Infiniti Q50
- 2020-2022 Infiniti Q60

**Important:** Before purchase and programming, verify that the FCC ID (KR5TXN7) and part number (285E3-6HE6A) on the back of your original key match the specifications of this replacement key fob. The appearance of your original key should also be similar to the product shown.

# Compatible



2020 - 2022 Infiniti Q60  
2020 - 2023 Infiniti Q50

**FCC ID: KR5TXN7**  
**Frequency: 434MHz**



Our 15 years of professional quality  
Give you a more comfortable experience

## Keyless Entry Remote Key Fob


Image: Visual representation of compatible Infiniti Q50 and Q60 models, highlighting the key fob's FCC ID and frequency.

### PACKAGE CONTENTS

Each Keylessbest KR5TXN7 package includes the following components:

- Key Fob Shell (x1)
- PCB Board (x1)
- Uncut Key Blade (x1)
- Lithium Battery (CR2032) (x1)
- Chip (4A) (x1)

# Package Included:

	<b>Key Fob shell * 1</b>
	<b>PCB Board * 1</b>
	<b>Uncut Key Blade * 1</b>
	<b>Lithium Battery * 1</b>
	<b>Chip * 1</b>

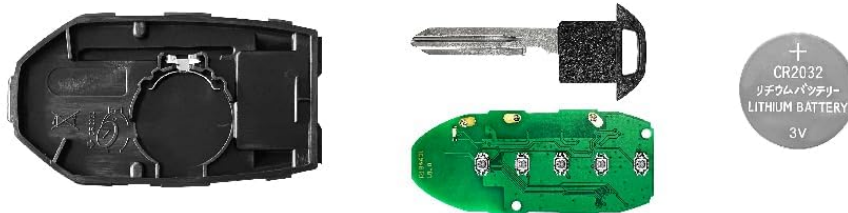


Image: Exploded view of the key fob components, including the shell, circuit board, uncut key blade, battery, and transponder chip.

## SETUP AND PROGRAMMING

This is a brand-new, unprogrammed key fob. Programming is required for it to function with your vehicle. There are two primary methods for programming:

### 1. Professional Programming

It is strongly recommended to have your key fob programmed by a professional locksmith or an authorized dealership. They possess the specialized tools and expertise to correctly program the key fob to your vehicle's immobilizer system.

If your vehicle has been modified with an aftermarket electronic system, professional assistance is essential.

### 2. Self-Programming (If Applicable)

Some vehicles may allow for self-programming. Please check the programming instructions on the manufacturer's website: [programyourfob.com](http://programyourfob.com). If you are unable to find specific instructions for your vehicle model or year on the website, or if programming attempts fail, professional assistance from a locksmith or dealer is necessary.

Your browser does not support the video tag.

Video: This video demonstrates the general process of programming a Keylessbest car key fob, including checking vehicle

information on the programming website and the need for professional assistance if self-programming is not possible or fails.

## Key Blade Cutting

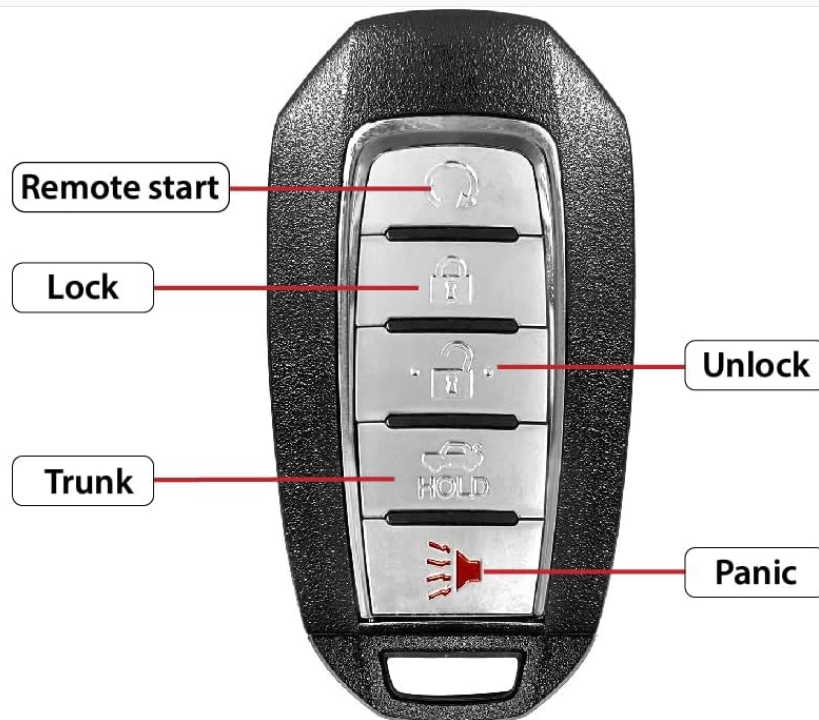
The included key blade is uncut. You will need to take it to a local professional locksmith for cutting to match your vehicle's ignition or door lock.

## OPERATING THE KEY FOB

The Keylessbest KR5TXN7 key fob features 5 buttons for various functions:

- **Remote Start:** Typically indicated by a circular arrow icon. Press to remotely start your vehicle (if equipped).
- **Lock:** Indicated by a closed padlock icon. Press to lock all vehicle doors.
- **Unlock:** Indicated by an open padlock icon. Press once to unlock the driver's door, press twice to unlock all doors.
- **Trunk/Hatch Release:** Indicated by a car icon with an open trunk. Press and hold to open the vehicle's trunk or hatch.
- **Panic:** Indicated by a red speaker icon. Press and hold to activate the vehicle's alarm system.

<b>Type:</b> Nissan 5 buttons
<b>Frequency:</b> 434MHz
<b>FCC ID:</b> KR5TXN7
<b>IC:</b> 7812D-TXN7
<b>PN:</b> 285E3-6HE6A



## Important Note:

We strongly recommend that you have your KEY FOB programmed by a professional locksmith or dealer.

We only provide UNCUT key blades, please go to the local professional locksmith for cutting.

## MAINTENANCE

### Battery Replacement

The key fob uses one CR2032 lithium battery. If the remote's range decreases or it stops responding, the battery may need replacement. To replace the battery:

1. Carefully disassemble the remote key fob, typically by prying apart the two halves using a small flat-head screwdriver or a specialized tool.
2. Remove the old CR2032 battery, noting its orientation (positive (+) side up).
3. Insert a new CR2032 battery with the positive (+) side facing up.
4. Reassemble the key fob, ensuring all components are securely in place.

Your browser does not support the video tag.

Video: This video demonstrates the steps for disassembling the key fob, replacing the battery, and reassembling it, followed by a functional test.

## TROUBLESHOOTING

- **Key Fob Not Responding:** Ensure the battery is correctly installed and has sufficient charge. If the issue persists, the key fob may not be properly programmed to your vehicle.
- **Programming Failure:** If you encounter difficulties during self-programming, or if the key fob does not function after programming, it may indicate a compatibility issue or require professional programming. Contact a certified locksmith or dealership for assistance.
- **Reduced Range:** A weak battery is the most common cause of reduced operating range. Replace the CR2032 battery.

## SPECIFICATIONS

Feature	Detail
Brand	Keylessbest
Model Name	KR5TXN7
Number of Buttons	5
FCC ID	KR5TXN7
Frequency	434MHz
Chip Type	4A
Battery Type	1 CR2032 (included)
Key Blade Type	HU100 Blade (uncut)
Product Dimensions	3.15"L x 1.57"W
Item Weight	1.76 ounces
Material	Metal, Plastic



Type:  
**Remote Key**

# Tested in the **US**



FCC ID:  
**KR5TXN7**



Frequency:  
**434 MHz**



Button:  
**5 Buttons**



Key Blade:  
**HU100 Blade**



Battery:  
**With CR2032**



Chip:  
**4A**



PCB Board:  
**With**

**Local Store**

OEM

Program  
Chip  
PCB Board

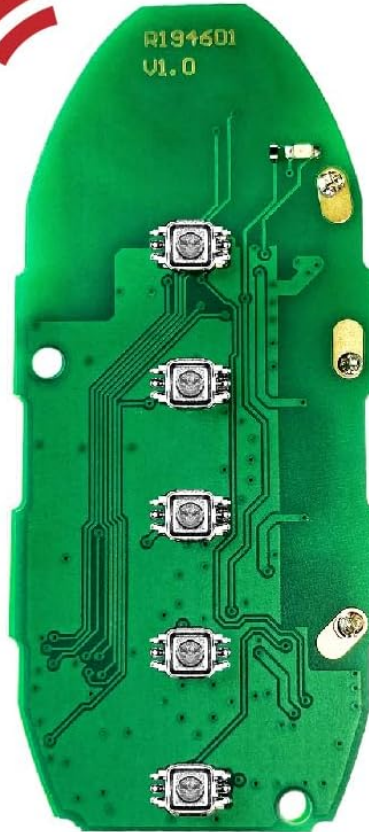


Image: Internal components of the key fob, including the PCB board and chip, with frequency and chip type verification.

## WARRANTY AND SUPPORT

Specific warranty details for this product are not provided in the available information. For warranty inquiries, technical support, or further assistance, please contact Keylessbest directly through their official channels or the retailer from whom the product was purchased.

