

BoyKeep K20

BoyKeep K20 Outdoor Security Camera User Manual

Model: K20



1. INTRODUCTION

This user manual provides detailed instructions for the installation, operation, and maintenance of your BoyKeep K20 Outdoor Security Camera. Please read this manual thoroughly before using the product to ensure proper function and safety. Keep this manual for future reference.

2. PRODUCT OVERVIEW

The BoyKeep K20 is a 2K outdoor security camera designed to provide comprehensive surveillance for your home. It features 360° pan and tilt capabilities, color night vision, motion detection, and two-way audio communication.



Figure 2.1: BoyKeep K20 Outdoor Security Camera and its live view on a smartphone.

2.1 Key Components

- **Camera Lens:** Captures 2K resolution video.
- **Infrared LEDs:** For night vision.
- **Spotlights:** For color night vision and deterrence.

- **Microphone:** For audio input.
- **Speaker:** For two-way audio output.
- **Antennas:** For Wi-Fi connectivity (2.4 GHz only).
- **Power Port:** For connecting the charging cable.
- **Reset Button:** Used for resetting the camera during setup or troubleshooting.
- **Micro SD Card Slot:** For local video storage (card not included).

3. FEATURES

- **360° Pan and Tilt with Auto Tracking:** The camera supports 355° horizontal rotation and 120° vertical rotation, providing a 360° field of view. It can automatically track moving individuals or objects, ensuring continuous coverage without blind spots.



Figure 3.1: The camera's 360° pan and tilt functionality provides comprehensive area coverage.

- **2K Resolution and Color Night Vision:** Equipped with a 2K high-resolution lens, the camera delivers sharp and detailed images. It offers full-color night vision, allowing clear monitoring even in complete darkness, aiding in the identification of potential threats.

Excellent Night Vision



Figure 3.2: Demonstrates the camera's excellent night vision capabilities, including color night vision with spotlights.

- **Two-Way Audio:** Facilitates clear communication through the camera. This allows you to interact with visitors or deter intruders directly from your smartphone.



Figure 3.3: The two-way audio feature enables direct communication through the camera.

- **Motion Detection and Real-time Alerts:** The camera intelligently detects motion and sound. Upon detection, it sends warning messages to your mobile phone. Sensitivity settings can be adjusted to reduce false alarms from environmental factors like insects or weather.

Smart Motion Tracking



Figure 3.4: Smart motion tracking identifies and follows movement within the camera's view.

Customize Your Activity Area

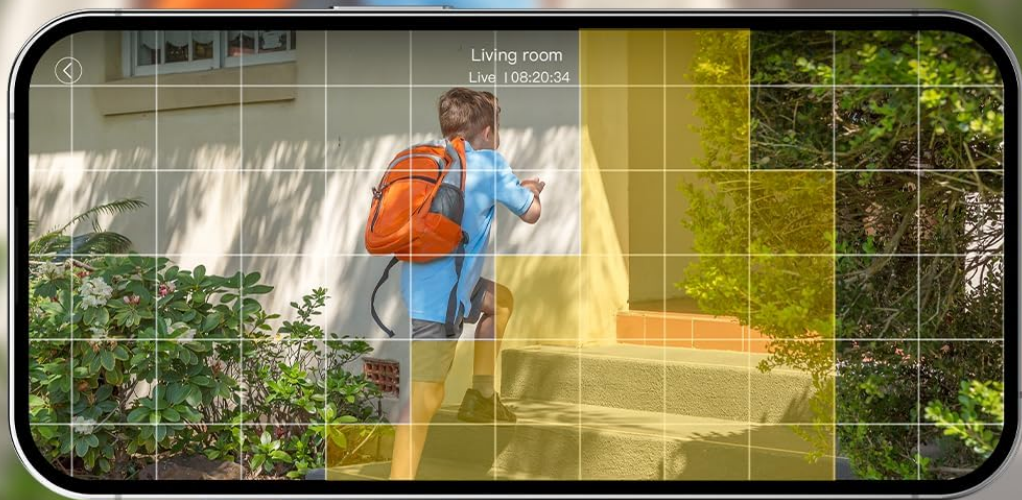


Figure 3.5: Customize specific activity areas to focus motion detection on critical zones.

- **Flexible Storage Options:** Supports local storage via a Micro SD card (up to 128GB, not included) for 24/7 continuous recording. It also offers cloud storage options, including a 30-day free trial and a lifetime zero-cost cloud storage plan for 12-second motion events over the last 24 hours (requires in-app activation).
- **Multi-Device Viewing and Sharing:** The application allows you to add multiple cameras and view up to four real-time video feeds simultaneously. You can share access with family members on up to 10 devices.

4. SETUP INSTRUCTIONS

Follow these steps to set up your BoyKeep K20 camera:

1. **Download the App:** Search for the designated BoyKeep security camera application on your smartphone's app store (iOS or Android) and install it.
2. **Power On and Reset:** Connect the camera to a power source using the provided charging cable. Once powered on, locate the reset button (often a small pinhole) and press and hold it until you hear an audible confirmation or indicator light changes.
3. **Scan the QR Code:** Open the app and follow the on-screen instructions to add a new device. The app will prompt you to scan a QR code, typically found on the camera itself or in the quick start guide.
4. **Connect to Wi-Fi:** Ensure your smartphone is connected to a 2.4 GHz Wi-Fi network. The camera only supports 2.4 GHz Wi-Fi. Follow the app's instructions to connect the camera to your home Wi-Fi network.

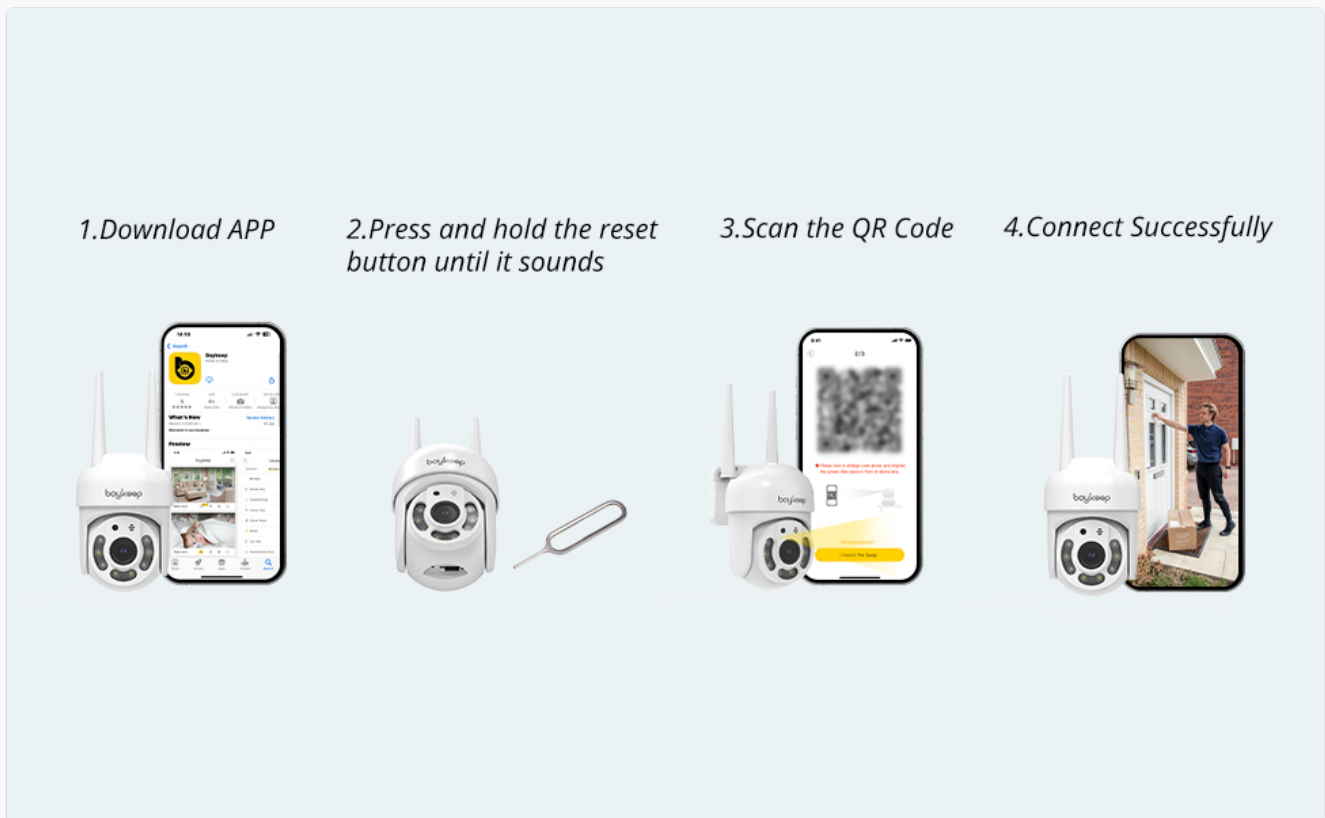


Figure 4.1: Visual guide for the initial setup process.

For detailed installation instructions, including mounting the camera, please refer to the quick start guide included in the packaging.

5. OPERATING INSTRUCTIONS

5.1 Live View

Open the BoyKeep app on your smartphone. Select the camera from your device list to access the live video feed. You can view real-time footage of your monitored area.

5.2 Pan and Tilt Control

In the live view interface, use the directional controls (usually a joystick or arrows) on your screen to remotely adjust the camera's horizontal (pan) and vertical (tilt) angles. This allows you to survey different areas.

5.3 Two-Way Audio

To use two-way audio, tap the microphone icon in the live view. Speak into your phone, and your voice will be transmitted through the camera's speaker. Tap the speaker icon to hear audio from the camera's microphone.

5.4 Motion Detection Settings

Navigate to the camera settings within the app. Here you can:

- Adjust motion detection sensitivity.
- Set up specific activity zones to monitor.
- Enable or disable real-time alerts and notifications.

5.5 Recording and Playback

Recordings are stored on either the Micro SD card (if installed) or in the cloud (if activated). To view recorded footage, access the playback section in the app and select the desired date and time.

5.6 Sharing Device Access

In the app's settings, locate the device sharing option. You can invite other users (e.g., family members) to view the camera feed and access certain functions. Up to 10 devices can share access simultaneously.

6. MAINTENANCE

- **Cleaning:** Gently wipe the camera lens and body with a soft, dry cloth. Avoid using harsh chemicals or abrasive materials that could damage the camera.
- **Firmware Updates:** Regularly check the app for available firmware updates. Keeping your camera's firmware updated ensures optimal performance, security, and access to new features.
- **Power Supply:** Ensure the camera is connected to a stable power source. Avoid exposing the power cable to extreme weather conditions or physical damage.
- **Wi-Fi Connection:** Maintain a strong 2.4 GHz Wi-Fi signal for consistent performance. Weak signals can lead to connection drops or delayed alerts.

7. TROUBLESHOOTING

Problem	Possible Solution
Camera fails to connect to Wi-Fi.	<ul style="list-style-type: none">◦ Ensure your Wi-Fi network is 2.4 GHz. The camera does not support 5 GHz Wi-Fi.◦ Check Wi-Fi password for accuracy.◦ Move the camera closer to the Wi-Fi router.◦ Reset the camera and try the setup process again.
No video feed or offline status.	<ul style="list-style-type: none">◦ Verify the camera is powered on.◦ Check your Wi-Fi connection.◦ Restart the camera by unplugging and replugging the power cable.

Problem	Possible Solution
Motion alerts are not received.	<ul style="list-style-type: none">◦ Ensure motion detection is enabled in the app settings.◦ Check app notification settings on your smartphone.◦ Adjust motion detection sensitivity.
Poor image quality.	<ul style="list-style-type: none">◦ Clean the camera lens.◦ Ensure adequate lighting, especially for color night vision.◦ Check your internet connection speed.



8. SPECIFICATIONS

Feature	Detail
Model Number	K20
Resolution	2K (1296p)
Pan/Tilt Range	Horizontal 355°, Vertical 120°
Connectivity	Wi-Fi (2.4 GHz only)
Night Vision	Color Night Vision, Infrared Night Vision
Audio	Two-Way Audio
Storage Options	Micro SD Card (up to 128GB, not included), Cloud Storage
Power Source	Cable Electric (7 Watts)
Dimensions (L x W x H)	5 x 5 x 8 cm (50 x 50 x 80 millimeters)
Weight	370 grams
Mounting Type	Wall Mount
Compatible Devices	Smartphone (iOS, Android)

9. WARRANTY AND SUPPORT

BoyKeep is committed to providing high-quality security solutions. For warranty information and technical support, please refer to the documentation included with your product or visit the official BoyKeep website. Contact customer service for assistance with any product-related inquiries or issues.



	<p>BoyKeep Smart Wi-Fi Camera User Manual</p> <p>A comprehensive user manual for the BoyKeep Smart Wi-Fi Camera, detailing setup, connection, features, FAQs, and important notes for optimal usage.</p>
	<p>BoyKeep Wi-Fi Smart Camera Manual Guide</p> <p>A comprehensive manual guide for the BoyKeep Wi-Fi Smart Camera, covering app download, account login, device setup via scanning code and AP hotspot, features, FAQs, and important notes.</p>
	<p>BoyKeep K20 Outdoor Security Camera User Manual</p> <p>User manual for the BoyKeep K20 Outdoor Security Camera, covering app download, device setup via AP hotspot or QR code, features, and troubleshooting. Contact support@boykeep.com or visit www.boykeep.com for assistance.</p>
	<p>Boykeep K30 Pet Camera: Instruction Manual and Setup Guide</p> <p>Comprehensive instruction manual for the Boykeep K30 Pet Camera. Learn how to download the BoyKeep app, log in, add your device via QR code or Bluetooth, use live view features, understand reset procedures, safety precautions, FAQs, and warranty information.</p>
	<p>BoyKeep K30 Pet Camera User Manual</p> <p>User manual for the BoyKeep K30 Pet Camera, detailing app download, device setup via Wi-Fi hotspot or QR code scanning, features, troubleshooting, and important notes.</p>
	<p>Boykeep K30 Pet Camera User Manual</p> <p>User manual for the Boykeep K30 Pet Camera, detailing setup, features, and troubleshooting for this indoor security camera. Learn how to connect and use your Boykeep K30.</p>