

Manuals+

[Q & A](#) | [Deep Search](#) | [Upload](#)

[manuals.plus](#) /

› [BONTEC](#) /

› [BONTEC Universal TV Wall Mount Instruction Manual](#)

BONTEC Universal TV Wall Mount

BONTEC Universal TV Wall Mount Instruction Manual

Model: Universal TV Wall Mount

Brand: BONTEC

PRODUCT OVERVIEW

The BONTEC Universal TV Wall Mount is designed to securely hold flat or curved televisions ranging from 37 to 85 inches. This versatile mount offers a range of adjustments including tilt, swivel, and level, providing an optimal viewing experience from various angles. Its robust construction ensures safety and durability, while its space-saving design allows the TV to be positioned close to the wall or extended for accessibility. Installation is made straightforward with included hardware and clear instructions.



Image: The BONTEC Universal TV Wall Mount, showcasing its articulated arms, wall plate, and TV brackets. Also visible are cable ties and a spirit level, indicating included accessories for installation.

SAFETY INFORMATION

Please read all instructions carefully before installation. Incorrect installation may result in property damage or personal injury. If you have any doubts, consult a qualified professional.

- Ensure the wall structure can safely support the combined weight of the mount and your television.
- **Important:** This mount is not designed for installation on drywall alone. It must be mounted into solid concrete, brick, or wooden studs.
- Do not exceed the maximum weight capacity of 60 kg (132 lbs).
- Verify your TV's VESA pattern and screen size are within the compatible range before proceeding with installation.
- Keep all small parts away from children.

Compatible with Various Walls



Wooden wall



Concrete wall



Brick wall



Not for Installation on Drywall Alone!

Image: Illustration demonstrating the compatibility of the TV mount with different wall types, including wooden, concrete, and brick walls. A prominent warning sign indicates that the mount should not be installed on drywall without proper reinforcement.

PARTS LIST

Before beginning installation, ensure all parts are present and undamaged. Refer to the diagram below for identification.

Fitting Hardware Included

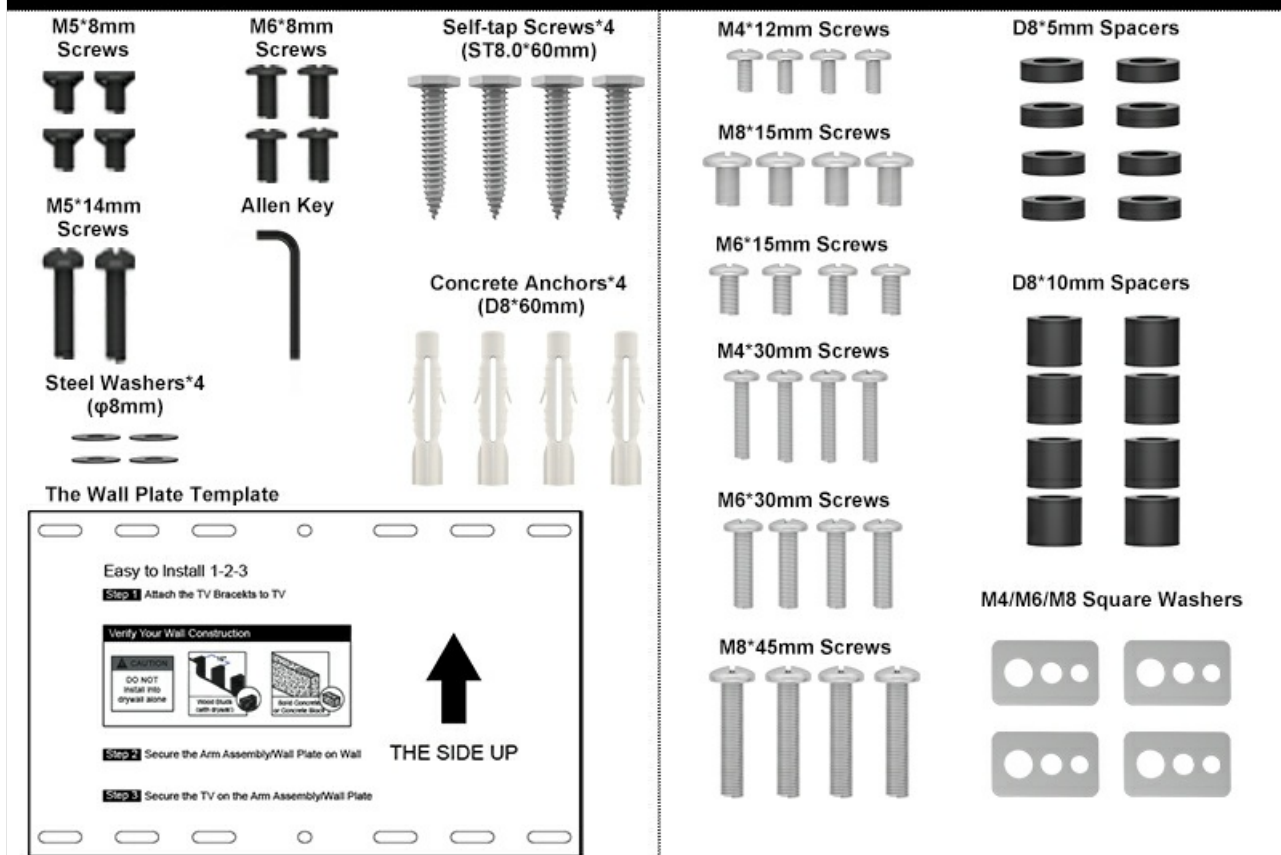


Image: A comprehensive diagram illustrating all components included in the fitting hardware kit. This includes various sizes of screws (M5, M6, M8, self-tapping), an Allen key, concrete anchors, steel washers, different sizes of spacers, and the wall plate drilling template.

Package Contents:

- TV Wall Mount Assembly (Main Unit)
- TV Brackets (2 pieces)
- Wall Plate Template
- Spirit Level
- Cable Ties (5 pieces)
- Assorted Screws (M4, M5, M6, M8) for TV and Wall Mounting
- Spacers (various sizes)
- Concrete Anchors
- Allen Key
- Washers

INSTALLATION GUIDE

Follow these steps for a secure and successful installation. It is recommended to have two people for installation, especially when mounting the TV.

Step 1: Attach TV Brackets to TV

1. Carefully place your TV face down on a soft, clean surface to prevent scratches.
2. Identify the VESA mounting holes on the back of your TV.
3. Select the appropriate screws (M4, M5, M6, or M8) and spacers that fit your TV's VESA holes.
4. Attach the two TV brackets to the back of your TV using the selected screws and spacers. Ensure the brackets are securely

fastened and level.

Compatible with 37"-85" Screen



Image: A visual guide illustrating VESA compatibility for screens ranging from 37 to 85 inches. It highlights the horizontal and vertical VESA dimensions (200×100mm to 600×400mm) and advises checking TV port locations to avoid obstruction by the brackets.

Step 2: Secure Arm Assembly/Wall Plate to Wall

1. Determine the desired height for your TV.
2. Use the provided wall plate template to mark the drilling locations on your wall. Ensure the template is level using the included spirit level.
3. Drill pilot holes at the marked locations. The size of the drill bit will depend on your wall type (wooden stud, concrete, or brick).
4. Insert concrete anchors into the holes if installing on concrete or brick.
5. Align the wall plate with the drilled holes and secure it to the wall using the appropriate screws (self-tapping screws for wooden studs, or screws with concrete anchors for concrete/brick). Ensure the wall plate is firmly attached and level.



Image: A person is shown using the wall plate template and a spirit level to accurately mark the drilling points on the wall for mounting the TV bracket. The template indicates which side should face up and outlines the three main installation steps.

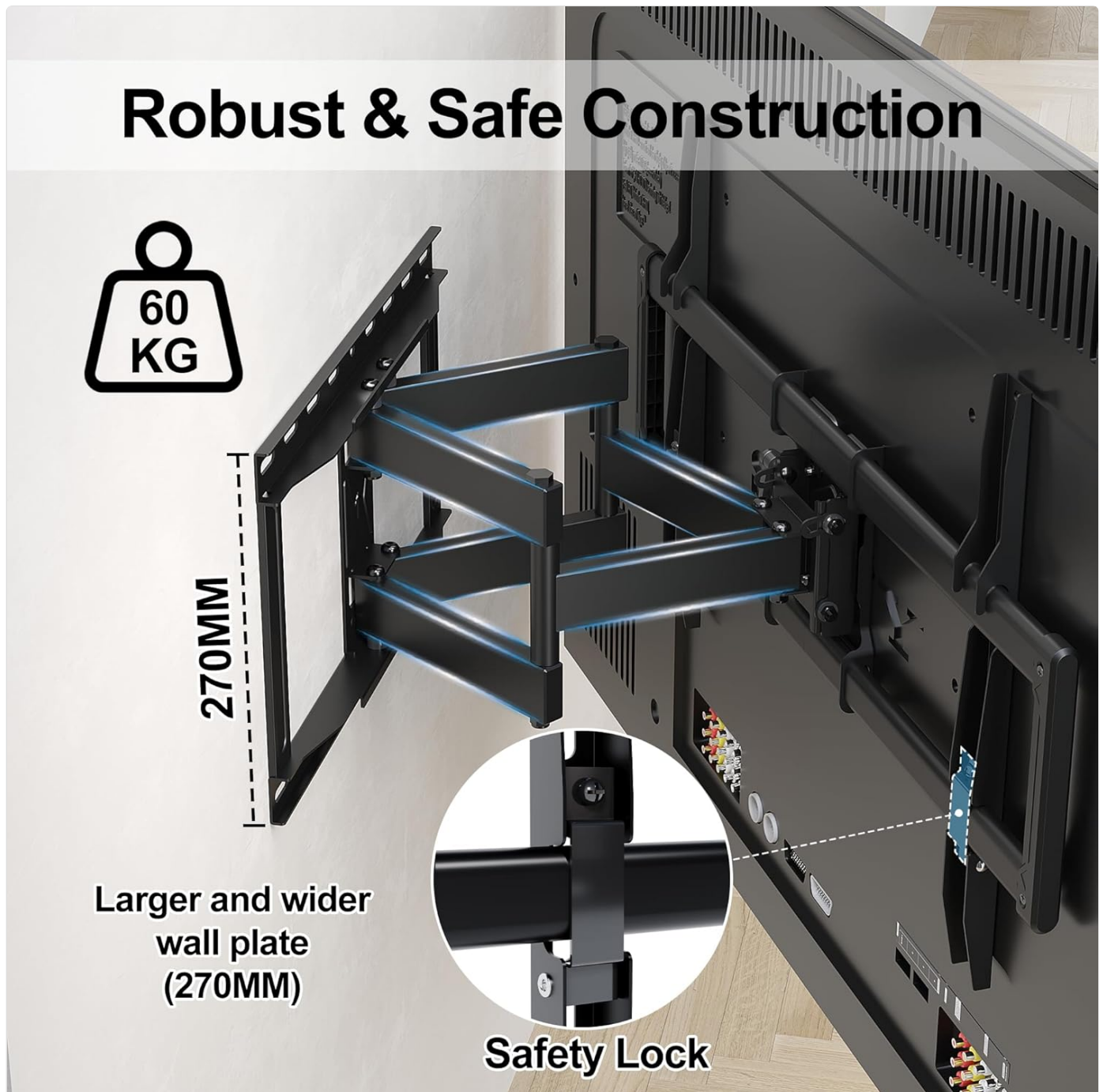


Image: A detailed view of the TV mount's robust construction, emphasizing its ability to support up to 60 kg. The image also shows the larger and wider wall plate (270mm) and a close-up of the safety lock mechanism, ensuring secure attachment.

Step 3: Secure the TV on the Arm Assembly/Wall Plate

1. With assistance, carefully lift the TV with the attached brackets.
2. Hook the TV brackets onto the wall plate. Ensure they are properly seated and engaged with the safety latches.

3. Once the TV is securely hung, engage any additional safety screws or mechanisms to prevent accidental dislodging.

OPERATING INSTRUCTIONS

The BONTEC TV wall mount allows for flexible adjustments to achieve your desired viewing angle.

Adjusting Tilt Angle

- The mount allows for a tilt adjustment of $+5^{\circ}$ to -15° .
- To adjust the tilt, use the easy-to-operate knob device located on the mount. No additional tools are required for this adjustment.
- Loosen the knob, adjust the TV to the desired vertical angle, and then tighten the knob to secure it in place.



Image: A visual representation of the TV mount's tilt functionality, allowing adjustment from $+5$ degrees upwards to -15 degrees downwards. A detailed inset shows the knob device used for easy, tool-free tilt adjustment.

Adjusting Swivel and Level

- The mount offers a swivel adjustment of $\pm 45^\circ$ to position your TV horizontally.
- A fine horizontal level adjustment of $\pm 3^\circ$ is also available for precise alignment after installation.
- Gently push or pull the TV to achieve the desired swivel angle. For level adjustment, consult the specific mechanism on your mount (often involves loosening and re-tightening specific screws).



Image: This image illustrates the adjustable viewing capabilities of the TV mount, including a $\pm 45^\circ$ degree swivel range for horizontal positioning and a $\pm 3^\circ$ degree level adjustment for fine-tuning the screen's horizontal alignment.

Extending and Retracting

- The mount can extend up to 420 mm (16.5 inches) from the wall and retract to a slim 68 mm (2.7 inches).
- Gently push or pull the TV forward to extend the arms or push it back towards the wall to retract.

Retracts & Extends



Image: A side view of the TV mount demonstrating its extension and retraction capabilities. It shows the mount retracting to a minimum distance of 68mm from the wall and extending to a maximum of 420mm, highlighting its space-saving and flexible design.

MAINTENANCE

To ensure the longevity and proper functioning of your BONTEC TV wall mount, follow these simple maintenance guidelines:

- **Cleaning:** Dust the mount regularly with a soft, dry cloth. For stubborn dirt, a slightly damp cloth can be used, followed by drying. Avoid abrasive cleaners or solvents.
- **Inspections:** Periodically check all screws and connections to ensure they remain tight and secure. Over time, vibrations or adjustments may cause slight loosening.
- **Lubrication:** If the articulating arms or swivel mechanism become stiff, a small amount of silicone-based lubricant can be applied to the moving joints. Avoid oil-based lubricants that may attract dust.
- **Weight Capacity:** Do not hang additional items or exceed the maximum weight capacity of the mount, as this can compromise its structural integrity and safety.

TROUBLESHOOTING

If you encounter any issues with your BONTEC TV wall mount, refer to the following common problems and solutions:

• **TV is not level after installation:**

- Check the wall plate to ensure it was installed perfectly level.
- Utilize the fine horizontal level adjustment (+/-3°) feature of the mount to correct minor discrepancies.
- Ensure all screws securing the TV brackets to the mount are tightened evenly.

• **Mount feels loose or wobbly:**

- Immediately remove the TV from the mount.
- Re-check all wall mounting screws and anchors to ensure they are securely fastened to the wall.
- Verify that the wall type is appropriate for the installation (not drywall alone).
- Ensure the TV brackets are properly engaged with the wall plate and safety locks are secured.

• **Difficulty adjusting tilt or swivel:**

- For tilt adjustment, ensure the adjustment knob is sufficiently loosened before attempting to change the angle.
- For swivel, ensure there are no obstructions preventing movement.
- Apply a small amount of silicone lubricant to the moving joints if stiffness persists.

• **Missing parts:**

- Refer to the "Parts List" section and contact BONTEC customer support if any components are missing from the original package.

If the problem persists after following these steps, please contact BONTEC customer support for further assistance.

SPECIFICATIONS

Attribute	Detail
Brand	BONTEC
Model	Universal TV Wall Mount
Compatible Screen Sizes	37 - 85 inches
Max Weight Capacity	60 kg (132 lbs)
VESA Compatibility	Min 200x100 mm to Max 600x400 mm
Tilt Angle	+5° / -15°
Swivel Angle	+/-45°
Level Adjustment	+/-3°
Distance from Wall (Retracted)	68 mm (2.7 inches)
Distance from Wall (Extended)	420 mm (16.5 inches)
Material	Metal
Color	Black

WARRANTY AND SUPPORT

BONTEC products are manufactured to high-quality standards. For information regarding warranty coverage, please refer to the warranty card included with your product or visit the official BONTEC website.

If you require technical assistance, have questions about installation, or need to report a missing/damaged part, please contact BONTEC customer support. Contact details can typically be found on the product packaging or the official BONTEC website.

For the most up-to-date support information, please visit: www.bontec.com/support (This is a placeholder URL as no specific support link was provided in the input data).