

## Manuals+

[Q & A](#) | [Deep Search](#) | [Upload](#)

### Manuals.plus /

- › [Membrane Solutions](#) /
- › Membrane Solutions MSB5 Air Purifier User Manual

## Membrane Solutions MSB5

# Membrane Solutions MSB5 Air Purifier User Manual

MODEL: MSB5

Brand: Membrane Solutions

## INTRODUCTION

The Membrane Solutions MSB5 Air Purifier is designed to improve indoor air quality by effectively filtering out various airborne particles and odors. This manual provides detailed instructions for the proper setup, operation, maintenance, and troubleshooting of your MSB5 air purifier to ensure optimal performance and a healthier living environment.



Image: The MSB5 Air Purifier shown alongside its replacement filter, highlighting its compact design and the filter component.

## KEY FEATURES

- **Efficient Particle Filtration:** Utilizes a HEPA filter to effectively remove smoke, pollen, pet dander, hair, and other particles.
- **Advanced 3-Stage Filtration:** Features a Pre-Filter for large particles, an H13 TRUE HEPA Filter for fine particles, and an Activated Carbon Filter with OdallerPure technology for enhanced odor removal.
- **Genuine Filter Compatibility:** Designed to work exclusively with Membrane Solutions Genuine MSB5 replacement filters to maintain optimal performance and extend product life.
- **Air Quality Display & Auto Mode:** Equipped with a touch panel display to show air quality and an Auto Mode that adjusts fan speed based on TVOC sensor readings.
- **Multiple Fan Speeds:** Offers Auto Mode, Sleep Mode, and Turbo Mode for customizable air purification.
- **Sealed Filter for Longevity:** Filters are sealed to preserve shelf life, with an estimated service life of 99 days depending on usage.

# H13 True HEPA Filter

## OdallerPure® Activated Carbon Filter

- Smoke, fumes, VOCs, pet odors, cooking smells

## HEPA Filtration

- Pollen, pet dander

## Pre Filtration

- Pet fur, lint, fibers

Image: An illustrative diagram detailing the three layers of the H13 True HEPA Filter: Pre-Filtration, HEPA Filtration, and OdallerPure Activated Carbon Filter, showing what each layer targets.

# 3-In-1 Filter Defense

● **Nylon Pre-filter**  
Large dust, fiber, lint

● **H13 True HEPA Filter**  
Pet dander, hair, fine dust

● **OdallerPure® Activated Carbon Filter**  
Smoke, fume, VOCs, odors

Image: An exploded view demonstrating the components of the 3-in-1 filter defense system, including the Nylon Pre-filter, H13 True HEPA Filter, and OdallerPure Activated Carbon Filter.

## SETUP GUIDE

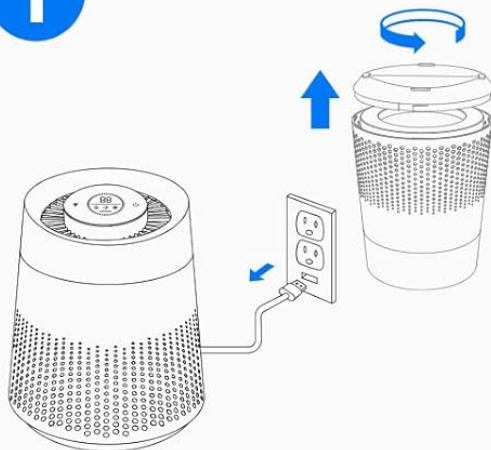
### 1. Unpacking and Filter Installation

Before first use, the filter must be removed from its protective plastic packaging. Follow these steps to install the filter:

1. Unplug the air purifier from the power source.
2. Gently flip the air purifier upside down.
3. Rotate the base cover counter-clockwise to unlock and remove it.
4. Carefully remove the old filter (if replacing) or the new filter from its plastic bag.
5. Insert the new filter into the air purifier, ensuring it is seated correctly.
6. Replace the base cover and rotate it clockwise to lock it securely.
7. Flip the air purifier upright and plug it into a power outlet.

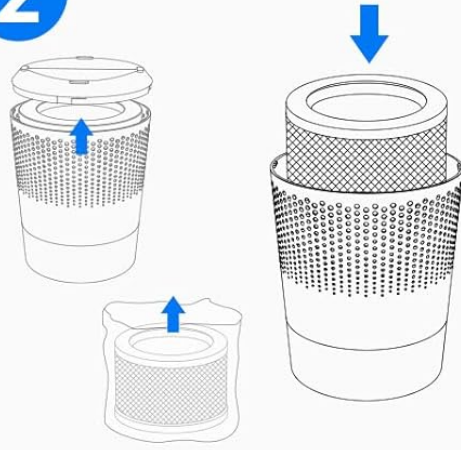
## Filter Replacement

1



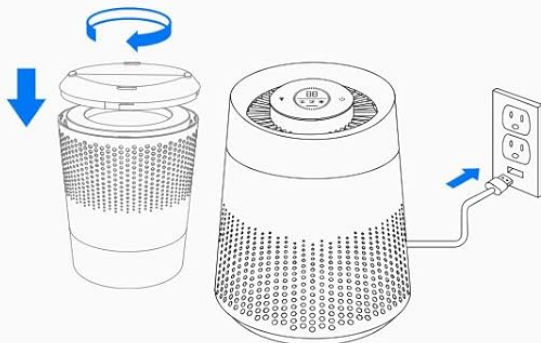
Flip over the machine, remove the cover

2



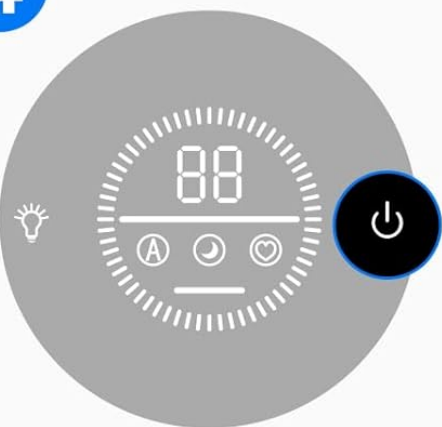
Take out the old filter, put the new in

3



Close the cover and plug in the air purifier

4



Press and hold the power button for 3 seconds to reset the filter time

out the old filter, 3) Replacing with the new filter (after tearing off plastic package), and 4) Closing the cover, plugging in, and resetting the filter time.

Your browser does not support the video tag.

Video: This video demonstrates the step-by-step process of replacing the air filter in the MSB5 Air Purifier, including unplugging, opening the base, removing the old filter, inserting the new one, and resetting the filter indicator.

## OPERATING INSTRUCTIONS

### 1. Power On/Off

Press the power button on the top touch panel to turn the air purifier on or off.

### 2. Adjusting Fan Speed

The MSB5 Air Purifier offers three fan speeds:

- **Auto Mode:** The air purifier automatically adjusts the fan speed based on the detected air quality (TVOC sensor).
- **Sleep Mode:** Operates at the lowest fan speed for quiet operation, ideal for bedrooms.
- **Turbo Mode:** Operates at the highest fan speed for rapid air purification.

Cycle through the fan speeds by pressing the fan speed button on the touch panel.

### 3. Air Quality Display

The touch panel displays the current air quality, allowing you to monitor the effectiveness of the purification in real-time.

## MAINTENANCE

### 1. Filter Replacement

The air filter has an estimated service life of 99 days, though this can vary based on usage and air quality. It is crucial to replace the filter with a Membrane Solutions Genuine MSB5 filter to ensure continued optimal performance. Non-official filters may not function correctly with the MSB5 air purifier.

To replace the filter, follow the steps outlined in the "Setup Guide" section above.

After replacing the filter, press and hold the power button for 3 seconds to reset the filter time indicator.



**High Performance**

The 360° Multi-layer filter traps pollutants from every direction efficiently

New >>>> After 3 Months

The image shows a black cylindrical air purifier on a wooden bedside table. Blue light rings emanate from the purifier, indicating its 360-degree coverage. In the foreground, a cylindrical air filter is shown in two halves: the left half is clean and white, labeled 'New', and the right half is dark and covered in dust, labeled 'After 3 Months'.

Image: A visual comparison showing a new, clean air filter next to a filter after approximately three months of use, illustrating the accumulation of pollutants.

## 2. Cleaning the Air Purifier

- Always unplug the air purifier before cleaning.
- Wipe the exterior of the unit with a soft, dry cloth.
- Do not use abrasive cleaners or solvents.
- The filter itself cannot be washed and should be replaced when dirty.

## TROUBLESHOOTING

If you encounter issues with your MSB5 Air Purifier, please refer to the table below for common problems and their solutions.

Problem	Possible Cause	Solution
Air purifier does not turn on.	Not plugged in; power outlet issue; filter not installed correctly.	Ensure the power cord is securely plugged in. Try a different outlet. Check if the filter is properly installed and the base cover is locked.
Poor air purification performance.	Filter is dirty or expired; non-genuine filter used; room size too large.	Replace the filter with a new, genuine Membrane Solutions MSB5 filter. Ensure the air purifier is used in an appropriately sized room.
Unusual noise during operation.	Obstruction in the fan; filter not seated correctly.	Unplug the unit and check for any foreign objects near the fan or filter. Reinstall the filter to ensure it is seated properly.
Filter indicator light remains on after replacement.	Filter timer not reset.	Press and hold the power button for 3 seconds to reset the filter time.

## SPECIFICATIONS

Feature	Detail
Brand	Membrane Solutions
Model	MSB5
Filter Type	Activated Carbon (3-stage: Pre-Filter, H13 TRUE HEPA Filter, Activated Carbon Filter with OdallerPure technology)
Controller Type	Touch Control
Specification Met	UL 2908 Ozone Free
Estimated Filter Service Life	99 days (depending on usage)
Date First Available	April 7, 2024

## WARRANTY AND SUPPORT

For warranty information, technical support, or any inquiries regarding your Membrane Solutions MSB5 Air Purifier, please contact Membrane Solutions customer service. Refer to the product packaging or the official Membrane Solutions website for the most up-to-date contact details.

It is recommended to register your product upon purchase to facilitate any future support needs.

