

## Membrane Solutions MSB5

# Membrane Solutions MSB5 Air Purifier User Manual

Model: MSB5 | Brand: Membrane Solutions

## 1. INTRODUCTION AND OVERVIEW

The Membrane Solutions MSB5 Air Purifier is designed to improve indoor air quality by effectively filtering out various airborne particles and odors. Featuring a multi-stage filtration system, it provides a healthier living environment by reducing common allergens and pollutants.



Image: The MSB5 Air Purifier unit shown alongside two replacement HEPA filters.

## 2. PRODUCT FEATURES

The MSB5 Air Purifier incorporates advanced features for optimal air purification:

- **Efficient Particle Filtration:** Utilizes a HEPA filter capable of filtering out particles such as smoke, pollen, dander, hair, and more effectively.
- **Upgraded 3-Stage HEPA Filter:** Features a comprehensive filtration design including a Pre-Filter, H13 TRUE HEPA Filter, and an Activated Carbon Filter. The activated carbon is enhanced with OdallerPure technology for improved odor removal.
- **Genuine Filter Requirement:** Only genuine Membrane Solutions MSB5 air purifier HEPA filters are compatible and ensure optimal working efficiency and extended machine life.
- **Air Quality Display & Auto Mode:** The desk air purifier offers three fan speeds: Auto Mode, Sleep Mode, and Turbo Mode. The touch panel displays real-time air quality. In Auto Mode, a TVOC sensor automatically adjusts fan speed based on air quality.
- **Properly Sealed & Easy Use:** The original air cleaner filter is designed for a perfect fit and is sealed to preserve shelf life.

# H13 True HEPA Filter

## OdallerPure® Activated Carbon Filter

- Smoke, fumes, VOCs, pet odors, cooking smells

## HEPA Filtration

- Pollen, pet dander

## Pre Filtration

- Pet fur, lint, fibers

Image: H13 True HEPA Filter layers.



# 3-In-1 Filter Defense

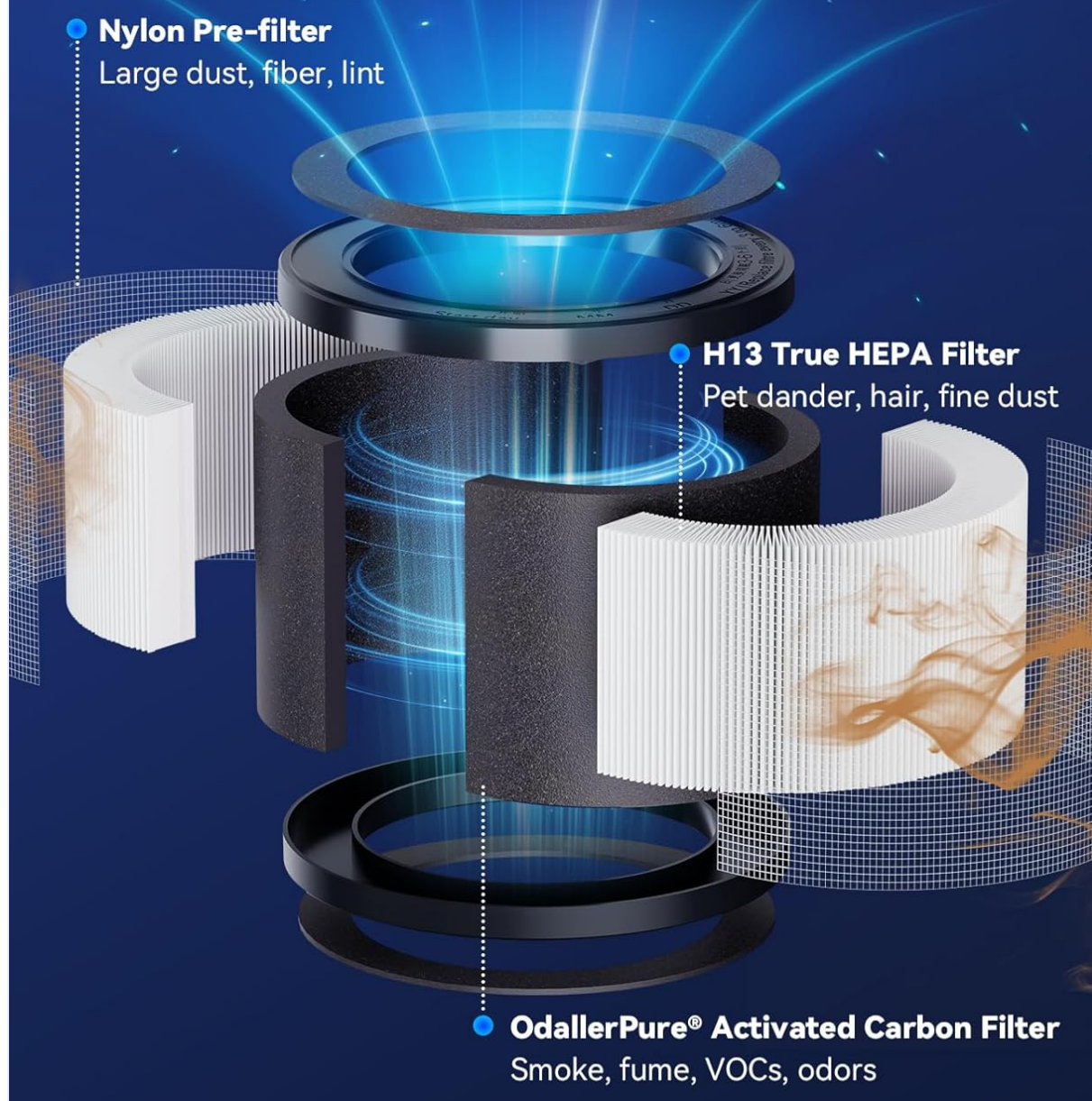


Image: 3-in-1 Filter Defense system.

## 3. SETUP AND INITIAL USE

Follow these steps to set up your MSB5 Air Purifier for the first time:

1. Carefully remove the air purifier from its packaging.
2. Flip the machine over and rotate the base counterclockwise to remove it.
3. Take out the old filter (if any) or the new filter that comes pre-installed.
4. **Important:** Remove the new filter from its plastic bag before placing it into the air purifier. The filter is sealed to preserve its shelf life.
5. Insert the new filter into the base of the air purifier.
6. Close the cover by rotating the base clockwise until it is securely locked.

7. Plug in the air purifier using the provided USB cable.

## Trusted Membrane Solutions Quality

Find the Membrane Solutions filter with the "GENUINE" badge for the best fit and filtration, while other-brand filters are unavailable



Image: The MSB5 Air Purifier and its filter.

## 4. OPERATING INSTRUCTIONS

The MSB5 Air Purifier features an intuitive touch panel for easy operation:

- **Power On/Off:** Press the power button on the touch panel to turn the unit on or off.
- **Fan Speed Adjustment:** Cycle through fan speeds (Auto Mode, Sleep Mode, Turbo Mode) by pressing the fan speed button.
- **Auto Mode:** In this mode, the built-in TVOC sensor detects air quality and automatically adjusts the fan speed to optimize purification.
- **Sleep Mode:** Reduces fan speed and light output for quiet operation during rest.

- **Air Quality Display:** The touch panel displays real-time air quality readings, allowing you to monitor your environment.

## Filter Replacement

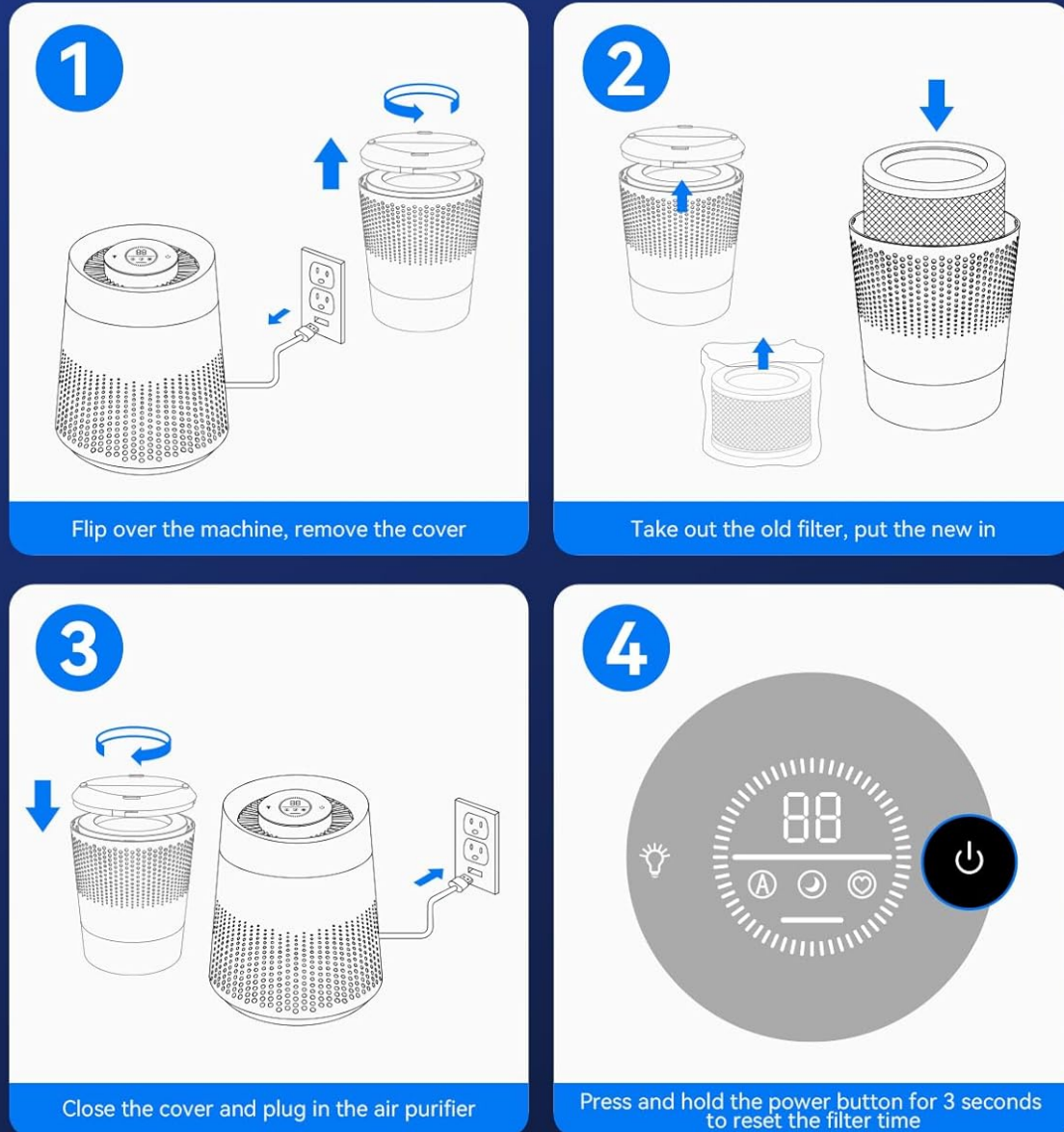


Image: Control panel of the MSB5 Air Purifier.

## 5. MAINTENANCE: FILTER REPLACEMENT

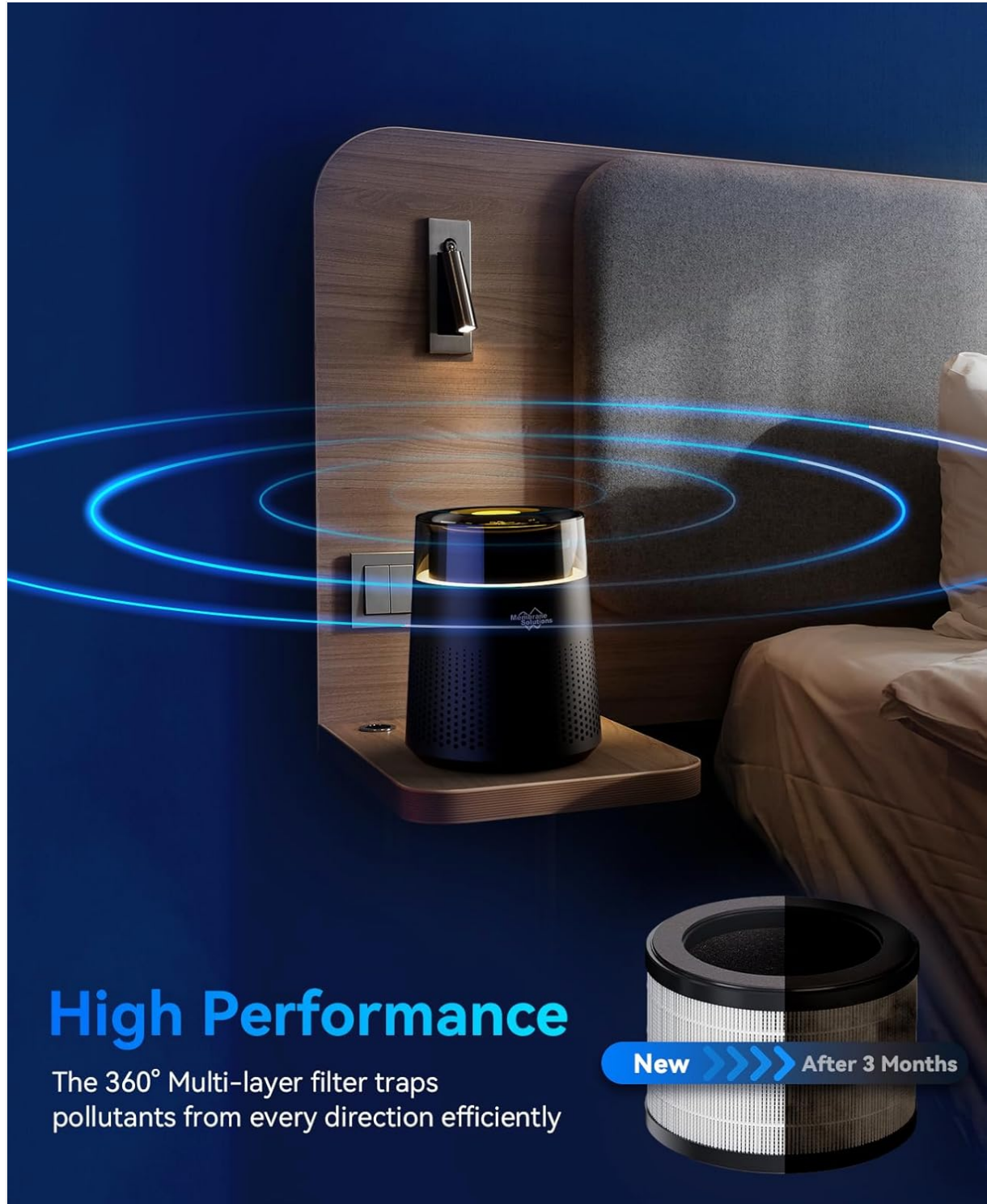
Regular filter replacement is crucial for maintaining the air purifier's efficiency. The filter service life is approximately 99 days, depending on usage. The unit will indicate when a filter change is needed.

### Filter Replacement Steps:

1. Unplug the USB cable from the air purifier.
2. Flip the machine over and rotate the base counterclockwise to remove it.




3. Take out the old filter and dispose of it properly.
4. Unwrap the new filter from its plastic packaging.
5. Insert the new filter into the base of the air purifier.
6. Close the cover by rotating the base clockwise until it is securely locked.
7. Plug in the air purifier.
8. Press and hold the power button for 3 seconds to reset the filter time indicator.



**High Performance**

The 360° Multi-layer filter traps pollutants from every direction efficiently



New >>>> After 3 Months

Image: Step-by-step guide for filter replacement.

### Official Filter Replacement Video:

Your browser does not support the video tag.

Video: Official guide on how to replace the MSB5 Air Purifier filter.

## 6. TROUBLESHOOTING

If you encounter issues with your MSB5 Air Purifier, refer to the following common problems and solutions:

Problem	Possible Cause	Solution
Unit does not turn on	Not plugged in; power outlet issue; filter not unwrapped.	Ensure power cable is securely plugged in. Try a different outlet. Verify filter plastic packaging is removed.
Reduced airflow or purification efficiency	Clogged filter; incorrect filter installation.	Check filter condition and replace if necessary. Ensure filter is installed correctly and base is securely closed.
Unusual noise	Obstruction in fan; unit not on a flat surface.	Check for any foreign objects near the fan. Place the unit on a stable, flat surface.
Filter reset indicator remains on after replacement	Filter timer not reset.	Press and hold the power button for 3 seconds to reset the filter timer.

## 7. SPECIFICATIONS

Feature	Detail
Brand	Membrane Solutions
Model	MSB5
Filter Type	HEPA (3-stage: Pre-Filter, H13 True HEPA, Activated Carbon)
Controller Type	Button Control
Filter Service Life	Approx. 99 days (usage dependent)

## 8. WARRANTY AND SUPPORT

For warranty information, technical support, or any product-related inquiries, please contact Membrane Solutions customer service. Keep your purchase receipt for warranty claims.

You can also visit the official Membrane Solutions Store for more information and product support:

[Membrane Solutions Store](#)