

Manuals+

[Q & A](#) | [Deep Search](#) | [Upload](#)

manuals.plus /

› [ELECZON](#) /

› [ELECZON Computer Speakers User Manual](#)

ELECZON EC17

ELECZON Computer Speakers User Manual

Model: EC17

INTRODUCTION

Thank you for purchasing the ELECZON Computer Speakers. This manual provides essential information for setting up, operating, and maintaining your new speakers. Please read this manual thoroughly before use to ensure optimal performance and longevity of your device.

PACKAGE CONTENTS

Please check the package for the following items:

- ELECZON Computer Speakers (Model: EC17)
- USB-A to USB-C Power and Audio Cable
- User Manual (this document)

If any items are missing or damaged, please contact ELECZON customer support.

PRODUCT OVERVIEW

The ELECZON Computer Speakers are designed to deliver clear, powerful audio with dynamic RGB lighting, suitable for various multimedia applications including gaming, music, and movies.

Speaker Components and Controls

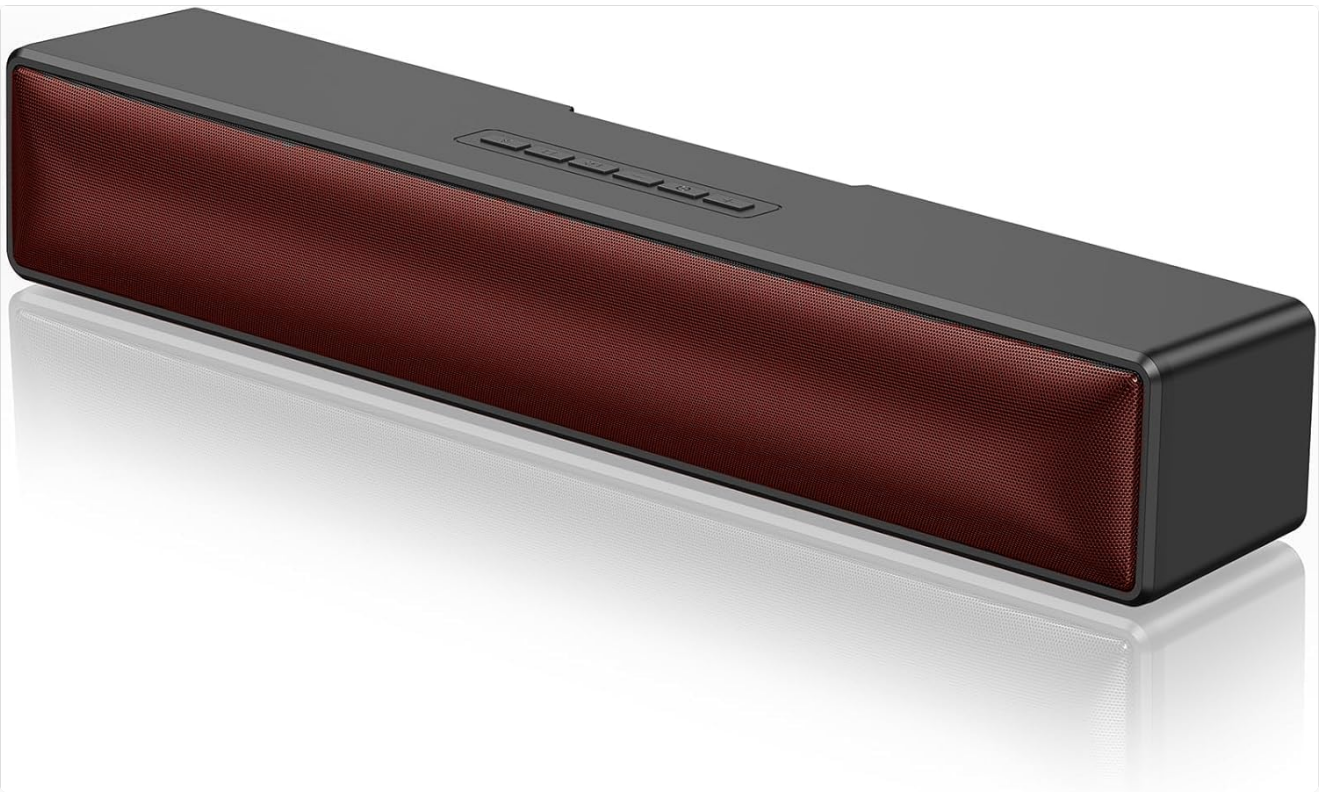


Figure 1: Front view of the ELECZON Computer Speaker, highlighting the red speaker grille and the control buttons located on the top surface. The speaker has a sleek, rectangular soundbar design.

The speaker features intuitive controls located on its top surface for easy access:

- **Power Button:** Press and hold to turn the speaker on or off.
- **Volume Up/Next Track:** Short press to increase volume. Long press to skip to the next track.
- **Volume Down/Previous Track:** Short press to decrease volume. Long press to go to the previous track.
- **Play/Pause Button:** Press to play or pause audio playback.
- **Mode Button:** Press to cycle through input modes (Bluetooth, USB, Micro SD) and RGB light modes.

Ports and Connections

- **USB-C Port:** For power supply and lossless audio transmission from a computer or other USB-A source using the provided cable.
- **Micro SD Card Slot:** For direct audio playback from a Micro SD card.

SETUP

1. **Placement:** Place the ELECZON Computer Speakers on a stable, flat surface, such as a desktop or tabletop, ensuring proper ventilation.
2. **Power Connection:** Connect the USB-A end of the provided USB-A to USB-C cable to a USB port on your computer, laptop, or a compatible USB power adapter (not included). Connect the USB-C end to the USB-C port on the speaker.
3. **Power On:** Press and hold the Power button on the speaker's top panel for approximately 3 seconds until the LED lights illuminate, indicating the speaker is powered on.

OPERATING INSTRUCTIONS

Power On/Off

- **To Power On:** Press and hold the Power button until the speaker powers on.
- **To Power Off:** Press and hold the Power button until the speaker powers off.

Connectivity Modes

The speaker supports multiple audio input methods. Press the **Mode Button** to switch between them.

1. USB Audio Mode:

When connected to a computer via the USB-A to USB-C cable, the speaker will automatically function as an audio output device. Ensure your computer's sound settings are configured to output audio to the ELECZON speaker.

2. Bluetooth Mode:

When in Bluetooth mode (indicated by a specific light pattern or voice prompt), enable Bluetooth on your device (smartphone, tablet, laptop). Search for "ELECZON Speaker" (or similar name) in your device's Bluetooth settings and pair. A confirmation sound will indicate successful pairing.

3. Micro SD Card Mode:

Insert a Micro SD card containing audio files (e.g., MP3) into the Micro SD card slot. The speaker will automatically switch to Micro SD card mode and begin playing audio from the card. Use the Play/Pause and track skip buttons to control playback.

Audio Playback and Volume Control

- **Play/Pause:** Press the Play/Pause button to start or stop audio playback.
- **Volume Adjustment:** Short press the Volume Up (+) or Volume Down (-) buttons to adjust the volume level.
- **Track Navigation:** Long press the Volume Up (+) button to skip to the next track. Long press the Volume Down (-) button to go to the previous track.

Dynamic RGB Light Show

The speaker features full-screen RGB lights with 5 different modes. Press the **Mode Button** repeatedly to cycle through the available light modes. To turn off the lights, continue pressing the Mode Button until the lights are off.

MAINTENANCE

- **Cleaning:** Use a soft, dry cloth to clean the speaker's exterior. Do not use liquid cleaners or abrasive materials.
- **Storage:** When not in use for extended periods, store the speaker in a cool, dry place away from direct sunlight and extreme temperatures.
- **Avoid Water:** Do not expose the speaker to water or excessive moisture.
- **Handle with Care:** Avoid dropping or subjecting the speaker to strong impacts.

TROUBLESHOOTING

Problem	Possible Cause	Solution
No power	Speaker is not connected to power or power source is faulty.	Ensure the USB cable is securely connected to both the speaker and a working USB port/power adapter. Try a different USB port or power source.

Problem	Possible Cause	Solution
No sound	Volume is too low; incorrect input mode; device not paired (Bluetooth); computer audio settings incorrect.	Increase speaker volume. Press the Mode button to select the correct input (USB, Bluetooth, Micro SD). For Bluetooth, ensure the speaker is paired. For USB, check your computer's sound output settings.
Bluetooth pairing failed	Speaker is not in pairing mode; device Bluetooth is off; too far from speaker.	Ensure speaker is in Bluetooth pairing mode. Turn off and on Bluetooth on your device. Move device closer to the speaker (within 33 feet/10 meters).
RGB lights not working	Lights are turned off; speaker malfunction.	Press the Mode button repeatedly to cycle through light modes and ensure they are not off. If problem persists, contact customer support.

SPECIFICATIONS

Feature	Detail
Model Name	EC17
Speaker Type	Soundbar
Output Power	10 Watts RMS
Connectivity	USB, Bluetooth, Micro SD Card
Special Features	Boost Bass, Colored LED Lights (5 modes), Button Control
Dimensions (L x W x H)	8"D x 2.8"W x 2.8"H (approx.)
Weight	1.08 pounds (approx.)
Color	Red
UPC	768561676132

WARRANTY AND SUPPORT

ELECZON products come with a standard manufacturer's warranty. For detailed warranty information, product support, or technical assistance, please visit the official ELECZON website or contact their customer service directly. Please retain your proof of purchase for warranty claims.

Customer Support: Refer to your product packaging or the official ELECZON website for the most current contact information.



