

Flaus 2FK-MASS-B1

FLAUS Electric Flosser User Manual

Model: 2FK-MASS-B1

- Information
- Setup
- Operation
- Product Overview
- Maintenance
- Safety
- Troubleshooting
- Specifications
- Warranty & Support

1. PRODUCT OVERVIEW

The FLAUS Electric Flosser is an advanced oral hygiene device designed to simplify and enhance your daily flossing routine. Utilizing sonic technology, it provides an efficient and comfortable method for cleaning between teeth and along the gumline, offering a faster alternative to traditional dental floss. This device is engineered to be gentle on gums while effectively removing plaque and debris.

Package Contents:

- 1x FLAUS Electric Flosser
- 1x Charging Base
- 1x USB-C Charging Cable
- 45x Gentle Gliding Floss Head Refills



Figure 1: The FLAUS Electric Flosser kit, including the main unit, charging base, and a supply of 45 gentle gliding floss heads. The packaging highlights its "Shark Tank" appearance and 3 speed settings.



Silky shred-resistant floss

Easily glides between the tightest of teeth.



Up to 18,000 sonic vibrations / min

Three speeds for a thorough, yet gentle clean.



Ergonomic bite pad

Helps guide the floss in and out of teeth.



Rechargeable battery

2-month battery life on a single charge. USB cable & charging base included.



Figure 2: Key components and features of the FLAUS Electric Flosser. This includes the silky shred-resistant floss, ergonomic bite pad, up to 18,000 sonic vibrations per minute, and the rechargeable battery with a 2-month life per charge.



Figure 3: An illustrative diagram highlighting the benefits and design aspects of the FLAUS Electric Flosser, such as being gentle on gums, having recyclable floss heads, sonic vibrations, ergonomic handle, waterproof design (IPX7), 2-month battery life, and being dentist-designed and recommended.

2. IMPORTANT SAFETY INFORMATION

Please read all safety information before using the FLAUS Electric Flosser. Failure to follow these instructions may result in injury or damage to the device.

- Consult your dental professional before incorporating Flaus into your daily routine.
- For oral application only.
- Do not use Flaus if you have any of the following conditions:
 - Loose teeth
 - Advanced periodontal disease
 - Coagulopathies

- Prescribed and/or taking blood thinners
 - Natural or drug-induced gingival hyperplasia
- Not recommended for use with crowns.
- Statements regarding dietary supplements have not been evaluated by the FDA and are not intended to diagnose, treat, cure, or prevent any disease or health condition.

3. SETUP

3.1 Initial Charging

Before first use, fully charge your FLAUS Electric Flosser. A full charge provides approximately two months of battery life.

1. Connect the USB-C charging cable to the charging base.
2. Plug the other end of the USB-C cable into a compatible USB power adapter (not included) or a USB port.
3. Place the FLAUS Electric Flosser onto the charging base. Ensure it is seated correctly.
4. The indicator lights on the flosser will illuminate to show charging status. Refer to the indicator light section for details.

3.2 Attaching a Floss Head

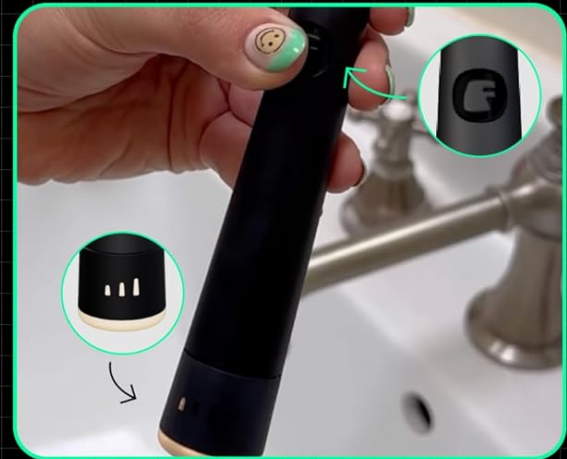
The FLAUS Electric Flosser uses replaceable floss heads for optimal hygiene and performance.

1. Ensure the flosser is turned off.
2. Align a fresh floss head with the top of the flosser handle.
3. Gently push the floss head onto the flosser until it clicks securely into place.

Flossing as easy as...



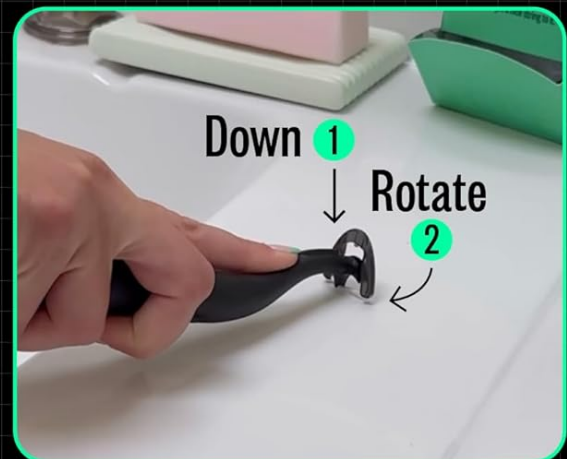
1 Snap on a fresh floss head to your flosser and power on.



2 Choose your favorite speed: 10K, 14K or 18K vibrations/min.



3 Sonic vibrations help FlaUS move quickly and gently between tight teeth.



4 Pop off used floss head. Easy-to-replace, low-waste, and made with recyclable plastic.

Figure 4: Step-by-step guide for using the FLAUS Electric Flosser, including snapping on a floss head, selecting a speed, using the device, and removing the used floss head.

4. OPERATION

4.1 Powering On and Speed Selection

The FLAUS Electric Flosser features three distinct speed settings to accommodate various sensitivities and cleaning needs.

1. Press the power button once to turn on the device. It will start at the lowest speed setting.
2. Press the power button again to cycle through the speed settings (e.g., Low, Medium, High). The indicator lights will change to reflect the selected speed.
3. To turn off the device, press and hold the power button for a few seconds, or cycle through all speeds until it turns off.

4.2 Flossing Technique

For optimal results, follow these guidelines for effective flossing:

- Gently guide the floss head between your teeth. The sonic vibrations will assist the floss in gliding smoothly.
- Use the ergonomic handle to comfortably reach all areas of your mouth, including molars, without needing to put fingers in your mouth.
- Allow the floss to gently curve around each tooth, forming a "C" shape, and slide it gently below the gumline.
- Move the floss head up and down against the side of each tooth.
- Rinse your mouth with water after flossing to remove dislodged plaque and food particles.



For a “just left the dentist clean” at home.

Figure 5: A user demonstrating the proper use of the FLAUS Electric Flosser, highlighting its ease of use for achieving a thorough clean.



TOSS THE FLOSS

- ✓ **Makes flossing easy**
Vibrations help **get between tight teeth** and floss **5x faster!**
- ✓ **Become a daily flosser**
90% of customers report flossing **MORE** regularly.
- ✓ **Easily reach your molars**
Ergonomic design allows you to comfortably reach your back molars **without fingers in mouth.**

SHARK TANK **Forbes** *Real Daily* **Inc.** **TIME**

Figure 6: Visual representation of the benefits of the FLAUS Electric Flosser, including making flossing easy, encouraging daily flossing habits, and allowing easy reach to molars due to its ergonomic design.

5. MAINTENANCE

5.1 Cleaning the Device

Regular cleaning ensures the longevity and hygiene of your FLAUS Electric Flosser.

- After each use, remove the floss head.
- Rinse the flosser head and the tip of the main unit under running water.
- Wipe the body of the flosser with a soft, damp cloth. Do not submerge the entire device in water, although it is rated IPX7 waterproof for rinsing.
- Ensure the device is dry before placing it back on the charging base.

5.2 Replacing Floss Heads

Floss heads should be replaced regularly for optimal performance and hygiene, typically after each use or as needed.

1. After flossing, turn off the device.
2. Gently pop off the used floss head from the flosser.
3. Dispose of the used floss head responsibly. FLAUS floss heads are made from recyclable plastic.
4. Attach a new floss head as described in the "Attaching a Floss Head" section.

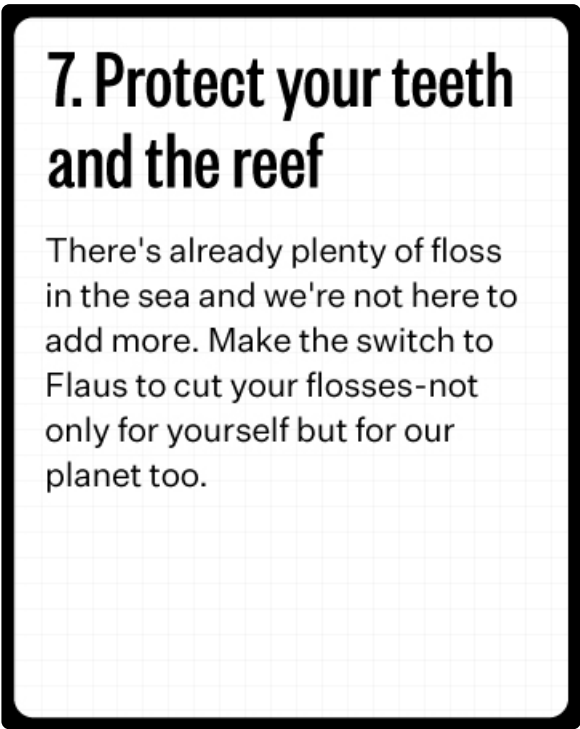


Figure 7: An image illustrating the eco-friendly aspect of FLAUS floss heads, which are made from recyclable plastic, promoting responsible disposal.

6. TROUBLESHOOTING

If you encounter issues with your FLAUS Electric Flosser, please refer to the following common solutions:

Problem	Possible Cause	Solution
Device does not turn on.	Low battery or not charged.	Place the device on the charging base and ensure it is fully charged. Check USB-C cable and power source connection.
Floss head does not stay attached.	Floss head not properly seated or damaged.	Ensure the floss head clicks securely into place. If it's damaged, replace with a new one.
Weak vibrations.	Low battery or debris affecting mechanism.	Charge the device fully. Clean the area where the floss head attaches to ensure no debris is interfering.
Floss breaks or shreds easily.	Floss head worn out or improper technique.	Replace the floss head. Ensure you are not applying excessive force or sawing motions; let the sonic vibrations do the work.

If the problem persists after trying these solutions, please contact FLAUS customer support for further assistance.

7. SPECIFICATIONS

Feature	Detail
---------	--------

Feature	Detail
Model Number	2FK-MASS-B1
Product Dimensions	7 x 1 x 1 inches
Weight	10.55 ounces
Power Source	Battery Powered (1 Lithium Ion battery included)
Battery Life	Approx. 2 months per charge
Vibration Speeds	3 (up to 18,000 sonic vibrations/min)
Waterproof Rating	IPX7
Floss Head Material	Toxin-free, recyclable plastic
Special Features	Multiple Pressure Settings, Non-Toxic Floss, Portable, Rechargeable, Ultrasonic Technology
Product Benefits	Gentle on Sensitive Areas, Gum Health, Prevents Bad Breath, Prevents Cavities, Removes Plaque



	 FLAUS ELECTRIC FLOSSER	 Traditional String Floss	 Floss Pick	 Water Flosser
Duration	60 Seconds	5 Minutes	Few Minutes	Few Minutes
Sonic Vibrations	✓	✗	✗	✗
Gets Hard-to-Reach Areas	✓	✗	✗	✓
Finger-Free	✓	✗	✗	✓
2-Month Battery Life	✓	✗	✗	✗
Aesthetic Design	✓	✗	✗	✗
Recyclable Heads	✓	✗	✗	✗

Figure 8: A comparison table illustrating the advantages of the FLAUS Electric Flosser over traditional string floss, floss picks, and water flossers in terms of duration, sonic vibrations, reach, finger-free use, battery life, design, and recyclable heads.

8. WARRANTY AND SUPPORT

8.1 Product Warranty

FLAUS products are manufactured to high-quality standards. For specific warranty details regarding your FLAUS Electric Flosser, please refer to the warranty card included in your product packaging or visit the official FLAUS website. Optional protection plans may be available for extended coverage.





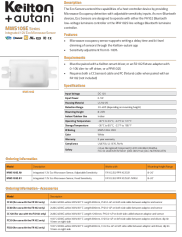

8.2 Customer Support

For any questions, technical assistance, or support regarding your FLAUS Electric Flosser, please contact FLAUS customer service. Contact information can typically be found on the product packaging or the official FLAUS website.
Online Resources: For additional information, FAQs, and product registration, please visit the official Flaus website or the Flaus store on Amazon: [FLAUS Amazon Store](#)

© 2024 FLAUS. All rights reserved.

This manual is for informational purposes only. Product specifications are subject to change without notice.

Related Documents - 2FK-MASS-B1

	<p>FLAUS Quick Start Guide: Your Guide to Effortless Flossing</p> <p>Get started with FLAUS, the revolutionary electric flosser. This quick start guide provides step-by-step instructions, tips, and FAQs for optimal oral hygiene.</p>
	<p>FLAUS Quick Start Guide: Your Guide to Effortless Flossing</p> <p>Get started with FLAUS, the revolutionary electric flosser. This quick start guide provides step-by-step instructions, tips, and FAQs for optimal oral hygiene.</p>
	<p>Asiga DentaTRY 3D Printing Resin Instructions For Use - Dental Temporary Crowns (Class I)</p> <p>Instructions for use for Asiga DentaTRY, a Class I medical device 3D printing resin for dental temporary crowns. Covers processing, washing, post-curing, storage, and safety for dental professionals.</p>
	<p>SilverCrest Candyfloss Machine SZM 500 B1 Operation and Safety Notes</p> <p>Comprehensive operation and safety instructions for the SilverCrest Candyfloss Machine SZM 500 B1, covering assembly, usage, cleaning, troubleshooting, and warranty information.</p>
	<p>Keilton MWS105E Series Integrated 12V Eco Microwave Sensor</p> <p>The Keilton MWS105E Series is an integrated 12V Eco Microwave Sensor offering adjustable sensitivity for occupancy detection. It is designed to work with Keilton's FA102 Bluetooth low-voltage luminaire controller or PPA102S line voltage Bluetooth luminaire controller. Key features include adjustable delay time, bi-level dimming, and sensitivity adjustment from 0-100%. The sensor has a detection range of 20-40ft and a mounting height range of 8-20ft. It is UL8750, UL1376, and RoHS compliant.</p>
	<p>3M ESPE Lava Ultimate CAD/CAM Restorative: Instructions for Use and Technical Guide</p> <p>Comprehensive guide to 3M ESPE Lava Ultimate CAD/CAM Restorative, a Resin Nano Ceramic for dental restorations. Covers product description, indications, tooth preparation, milling, bonding, and clinical procedures.</p>

