



Manuals.plus /

- › Martha Stewart /
- › Martha Stewart Jett Platform Bed Instruction Manual

Martha Stewart MG-0900271F-Q-DKBRN-BG-MS

Martha Stewart Jett Platform Bed Instruction Manual

Model: MG-0900271F-Q-DKBRN-BG-MS

Brand: Martha Stewart

1. PRODUCT OVERVIEW

The Martha Stewart Jett Platform Bed with Headboard offers a blend of softness and sophistication for your bedroom. This bed frame features a solid wood headboard with a fabric upholstered inset design and a smoothly upholstered base, providing a luxurious style without the need for a box spring.

It is designed for durability, with a solid wood base and wood slat supports capable of accommodating up to 800 lbs. of static weight. The design also incorporates 7.75 inches of underbed storage space, contributing to a tidy and organized environment.



Image: Martha Stewart Jett Platform Bed in a bedroom setting.

Key Features:

- Contemporary mixed media design balancing wood and fabric.
- Solid wood headboard with upholstered inset triple panel design.
- Smoothly upholstered base.
- Wood slat foundation with wooden legs.
- Supports up to 800 lbs. of static weight.
- Provides 7.75 inches of underbed storage space.
- No box spring required.
- Designed for easy assembly with included tools and instructions.



FEATURES:

Upholstered Sturdy
Solid Wood Frame

Accommodates Most
Types of Mattresses

Tapered
Wood Legs

Easy Assembly with
Included Tools and
Step-by-Step
Instructions



Image: Visual representation of key features.

2. IMPORTANT SAFETY INFORMATION

WARNING: Do not exceed the weight limit of 800 lbs. Always follow the assembly instructions carefully. This product is intended for adult use only. Never place this bed near a crib or other infant sleeping area. Always use appropriate bedding materials for the intended user.

Failure to follow these safety guidelines may result in injury or damage to the product.

3. INCLUDED COMPONENTS

The Martha Stewart Jett Platform Bed is shipped with all necessary components for assembly. Please refer to the detailed parts list and diagrams provided in the separate assembly instruction booklet included with your purchase. Before beginning assembly, carefully unpack all components and verify that all parts are present and undamaged.

Typical components include:

- Headboard sections
- Side rails
- Footboard
- Support legs
- Wood slats
- Hardware pack (bolts, washers, nuts, Allen wrench)



Image: Front view of the bed frame with slats.

4. SETUP AND ASSEMBLY

Assembly of the Martha Stewart Jett Platform Bed is designed to be straightforward and typically requires two people, with an estimated completion time of under one hour. All necessary tools are included.

Assembly Steps (General Guidelines):

1. **Preparation:** Clear an open space for assembly. Lay out all components and hardware. Refer to the included assembly manual for a detailed list and diagrams of each part.
2. **Headboard Assembly:** Attach the headboard sections as per the instructions. Pay close attention to the orientation and connection points.
3. **Frame Assembly:** Connect the side rails and footboard to the headboard. Ensure all connections are secure

but do not fully tighten bolts until the frame is fully assembled.

4. **Support Legs:** Attach all support legs to the frame, ensuring they are firmly in place and aligned.
5. **Slat Installation:** Place the wood slats across the frame. Secure them according to the instructions to ensure proper mattress support.
6. **Final Tightening:** Once all components are in place and aligned, systematically tighten all bolts and fasteners. Do not overtighten.

Important Note: Some users have reported that bolt labeling in the assembly instructions may require careful cross-referencing with the physical parts. Always verify the correct bolt size and type for each step using the provided diagrams. If any instructions seem unclear, refer to the visual diagrams or contact customer support for clarification.



Image: Side view of the bed frame with slats.

5. OPERATING INSTRUCTIONS

The Martha Stewart Jett Platform Bed is designed for immediate use upon complete and secure assembly. No box spring is required, as the integrated wood slat system provides ample support for your mattress.

- **Mattress Placement:** Carefully place your mattress directly onto the wood slats. Ensure the mattress is centered and evenly distributed on the frame.
- **Weight Capacity:** The bed frame has a static weight limit of 800 lbs. Do not exceed this limit to prevent damage to the frame and potential injury.
- **Underbed Storage:** Utilize the 7.75 inches of clearance beneath the bed for storage. Ensure items stored do not obstruct airflow or put undue pressure on the bed frame.

6. CARE AND MAINTENANCE

Proper care and maintenance will help preserve the appearance and longevity of your Martha Stewart Jett Platform Bed.

- **Cleaning:** For general cleaning, wipe the wood frame and upholstered fabric with a damp cloth. Avoid using harsh chemicals, abrasive cleaners, or excessive moisture, as these can damage the finish or fabric.
- **Spills:** In case of spills on the fabric, blot immediately with a clean, dry cloth. For stubborn stains, consult a professional upholstery cleaner.
- **Regular Inspection:** Periodically check all bolts and fasteners to ensure they remain tight. Re-tighten if necessary to maintain stability and prevent squeaking.
- **Avoid Direct Sunlight:** Prolonged exposure to direct sunlight can cause fabric fading and wood discoloration. Position the bed away from direct sunlight or use window coverings.
- **Moving the Bed:** When moving the bed, always lift it rather than dragging it to prevent damage to the legs and frame structure.

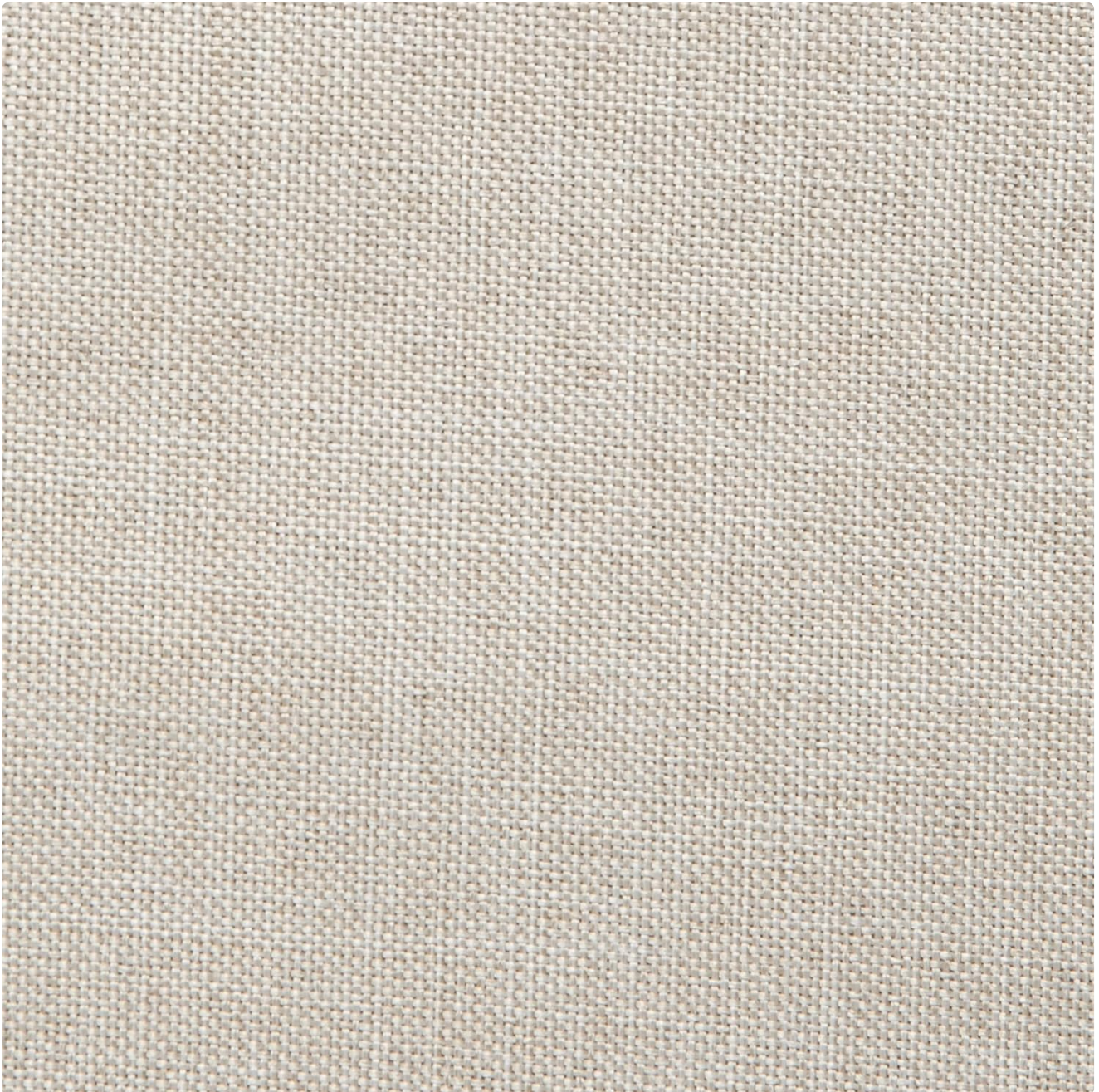


Image: Detail of the fabric upholstery.

7. TROUBLESHOOTING

This section addresses common issues you might encounter with your Martha Stewart Jett Platform Bed.

Problem	Possible Cause	Solution
Bed feels unstable or wobbly.	Loose bolts or fasteners.	Ensure all bolts are securely tightened. Periodically check and re-tighten all connections.
Squeaking noises.	Loose connections, friction between parts, or uneven floor.	Tighten all bolts. If squeaking persists, apply a small amount of lubricant (e.g., silicone spray) to metal-on-metal contact points. Ensure the bed is on a level surface.
Difficulty with assembly instructions.	Unclear diagrams or mislabeled parts.	Carefully review all diagrams and cross-reference parts. If a part seems mislabeled, try matching it by shape and size to the diagram. Contact customer support if you are unable to proceed.
Missing or damaged parts upon arrival.	Shipping damage or packing error.	Do not attempt to assemble with missing or damaged parts. Contact customer support immediately for replacement parts.

8. PRODUCT SPECIFICATIONS

Attribute	Detail
Model Number	MG-0900271F-Q-DKBRN-BG-MS
UPC	196861126796
Size	Queen
Product Dimensions	85"L x 63.75"W x 41"H
Item Weight	96 Pounds
Weight Limit	800 Pounds (Static)
Material	Solid Wood Frame, Fabric Upholstery
Color	Beige Fabric/Dark Brown Frame
Assembly Required	Yes (2-person recommended)
Underbed Clearance	7.75 inches
Country of Origin	Malaysia



MATERIAL	DIMENSIONS	CAPACITY
Upholstered Solid Wood Frame	63.75" x 85" x 41"	800lbs. Static Weight

Image: Product dimensions diagram.

9. WARRANTY INFORMATION

The Martha Stewart Jett Platform Bed comes with a **Limited Warranty**. Specific details regarding the terms, conditions, and duration of this warranty are typically provided in the packaging or can be obtained by contacting the manufacturer directly. Please retain your proof of purchase for any warranty claims.

10. CUSTOMER SUPPORT

If you have any questions, require assistance with assembly, or need to report missing/damaged parts, please contact Martha Stewart customer support or the retailer from whom you purchased the product.

For the most up-to-date contact information, please refer to the packaging or the official Martha Stewart website.

Online Resources: You may find additional support, FAQs, and assembly videos (if available) on the Martha Stewart brand's official product support pages.

Visit the Martha Stewart Store on Amazon