



Manuals.plus /

› Neugo /

› Neugo NE033M 10-in-1 Multi-Purpose Steam Mop User Manual

Neugo NE033M

Neugo NE033M 10-in-1 Multi-Purpose Steam Mop User Manual

Model: NE033M

1. IMPORTANT SAFETY INFORMATION

Please read all instructions carefully before using the Neugo NE033M Steam Mop. Failure to follow these instructions may result in electric shock, fire, or serious injury. Keep this manual for future reference.

- Always ensure the appliance is unplugged from the power outlet before filling with water, cleaning, or performing maintenance.
- Do not leave the steam mop unattended while it is powered on or in use.
- Keep the steam mop and its cord away from children and pets.
- Use only clean tap water in the water tank. Do not add cleaning solutions, perfumes, or other chemicals, as this can damage the appliance and void the warranty.
- Do not direct steam at people, animals, or electrical appliances. Steam is very hot and can cause burns.
- Do not immerse the steam mop in water or any other liquid.
- Inspect the power cord and plug for damage before each use. Do not use if damaged.
- Always remove the carpet glider when cleaning hard floors to prevent damage to the floor surface.
- Allow the appliance to cool completely before storing.

2. PRODUCT OVERVIEW

2.1 Package Contents

Carefully unpack your Neugo NE033M Steam Mop and ensure all items are present. Refer to the diagram below for identification of each component.

230°F
Deep Cleaning

99.99%
Stubborn Stains

0
Chemicals



Image: The Neugo NE033M Steam Mop with its main body, handle, mop head, and all 10 accessories including various brushes, nozzles, and cloths, neatly arranged on a white background.

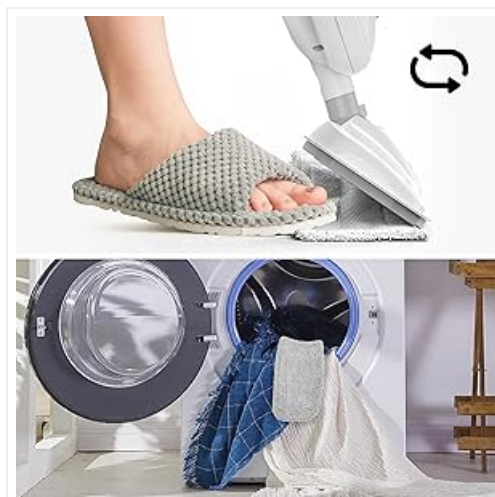


Image: A detailed diagram showing the numbered components of the Neugo NE033M Steam Mop, including the main body, mop head, carpet glider, handle, telescopic rod, and various cleaning tools.

- Steam Mop Main Body
- Mop Head
- Telescopic Rod
- Handle
- Carpet Glider (for carpet use only)
- Measuring Cup
- Adaptor
- Angle Nozzle
- Round Brush
- Large Round Brush
- Flat Brush
- Ironing Brush
- Window Cleaning Tool
- Scraping Tool
- Small Cloth
- Machine Washable Mop Pads (x2)

2.2 Key Features

- **High-Temperature Steam:** Produces steam up to 230°F (110°C) for deep cleaning and sanitization without chemicals.
- **10-in-1 Multi-Purpose Design:** Easily converts to a handheld steamer with various attachments for cleaning multiple surfaces.
- **Adjustable Steam Modes:** Three steam intensity settings (Min, Medium, Max) for different cleaning needs and floor types.
- **Quick Heat-Up:** Ready to use in approximately 20 seconds.
- **Removable Water Tank:** 15.2 oz (450ml) capacity for extended cleaning sessions, easy to refill.
- **Adjustable Height:** Telescopic rod allows for comfortable use without excessive bending.
- **Long Power Cord:** 23 ft (7m) cord provides extensive reach.
- **Flexible Mop Head:** Swivel head for easy maneuverability around furniture and tight spaces.
- **Self-Standing Design:** Convenient for temporary pauses during cleaning and storage.

ERGONOMIC DESIGN



Image: The Neugo NE033M Steam Mop highlighting its ergonomic features: a comfortable handle, adjustable height mechanism, and a 23-foot long power cord for extended reach.

3. ASSEMBLY

Follow these steps to assemble your Neugo NE033M Steam Mop:

1. **Attach Mop Head:** Insert the mop head into the main body until it clicks securely into place.
2. **Attach Telescopic Rod:** Connect the telescopic rod to the main body. Ensure it is firmly seated.
3. **Attach Handle:** Slide the handle onto the top of the telescopic rod until it locks.
4. **Secure Mop Pad:** Place a clean microfiber mop pad onto the mop head. The pad attaches with hook-and-loop fasteners.
5. **Optional: Carpet Glider:** If cleaning carpets, attach the carpet glider over the mop head with the mop pad already in place. **Remember to remove it for hard floors.**



Image: A foot gently pressing down to attach a mop pad to the steam mop head, and an arrow indicating the ease of removal for washing.

4. OPERATING INSTRUCTIONS

4.1 Filling the Water Tank

1. Ensure the steam mop is unplugged.
2. Remove the water tank from the main body by pressing the release button and pulling it out.
3. Open the water tank cap and fill the tank with clean tap water using the provided measuring cup. Do not overfill.
4. Close the water tank cap securely and reinsert the tank into the main body until it clicks.

15.20Z REMOVABLE TANK

Bigger tank, More cleaning time & area



Image: The removable water tank of the Neugo NE033M Steam Mop, shown being filled with water from a faucet and then being inserted back into the main unit.

4.2 Powering On and Heating

1. Plug the power cord into a grounded electrical outlet.
2. Press the power button. The indicator light will illuminate.
3. The steam mop will heat up in approximately 20 seconds. Once ready, steam will begin to emit.

4.3 Adjusting Steam Output

The Neugo NE033M features adjustable steam modes to suit various cleaning tasks and floor types.

- **Min Mode:** Ideal for delicate surfaces like hardwood and laminate floors, or for daily light cleaning.
- **Medium Mode:** Suitable for general cleaning of most hard floor surfaces.
- **Max Mode:** For tackling stubborn dirt and tough stains on durable surfaces like tile and grout.

Rotate the steam control dial on the main body to select your desired steam intensity.

ADJUSTABLE STEAM



Image: The Neugo NE033M Steam Mop demonstrating its adjustable steam settings, from 'Min' for hardwood and daily cleaning to 'Max' for stubborn stains, with icons for various floor types including hardwood, vinyl, laminate, tile, marble, and carpet.

4.4 Using as a Steam Mop

1. Ensure a clean mop pad is attached and the water tank is filled.
2. Select the appropriate steam mode for your floor type. For hardwood, laminate, and vinyl, use the Min steam setting to prevent water streaks and damage.
3. Gently glide the mop head across the floor surface. The swivel head allows for easy navigation around obstacles.
4. For carpets, attach the carpet glider over the mop head. Do not use the carpet glider on hard floors.

Steam Mop



Steam Cleaner



Image: The Neugo NE033M Steam Mop being used to clean a floor, and then detached and used as a handheld steam cleaner to clean a greasy stovetop with various attachments.

4.5 Using as a Handheld Steamer

To convert to a handheld steamer:

1. Unplug the unit and allow it to cool slightly.
2. Detach the telescopic rod and mop head from the main body.
3. Select the desired accessory (e.g., angle nozzle, round brush, scraping tool) and attach it to the main body.
4. Plug in the unit and power it on. Once steam is ready, direct the steam and accessory to the area you wish to clean.

The handheld steamer is suitable for cleaning kitchen surfaces, windows, furniture, toys, grout lines, shower tracks, and more.

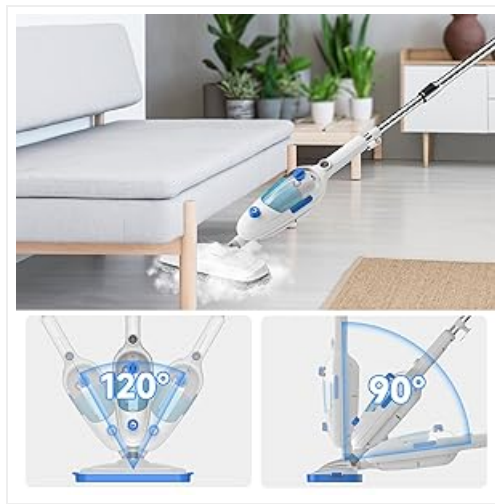


Image: A collage showing the Neugo NE033M handheld steamer being used with different attachments to clean a range hood filter, kitchen floor grout, a toilet, clothing for ironing, and children's building blocks.

5. MAINTENANCE

5.1 Cleaning Mop Pads

The microfiber mop pads are machine washable. After each use, remove the mop pad and wash it with mild detergent. Do not use bleach or fabric softeners, as these can reduce the pad's effectiveness. Air dry or tumble dry on low heat.

5.2 Descaling the Water Tank

Over time, mineral deposits from water can build up in the water tank and internal components. To maintain optimal performance, descale the unit periodically (e.g., every 3-6 months, depending on water hardness).

1. Ensure the steam mop is unplugged and completely cool.
2. Mix a solution of 1/3 white vinegar and 2/3 distilled water.
3. Pour the solution into the water tank.
4. Plug in the unit and allow it to heat up. Run the unit until half of the solution has been used.
5. Unplug and let it sit for 30 minutes.
6. Run the remaining solution through the unit.
7. Rinse the tank thoroughly with fresh water and run two full tanks of fresh water through the unit to flush out any remaining vinegar.

5.3 Storage

After use, ensure the steam mop is unplugged and has cooled down. Empty any remaining water from the tank. The self-standing design allows for convenient upright storage. Wrap the power cord neatly around the integrated cord hooks.

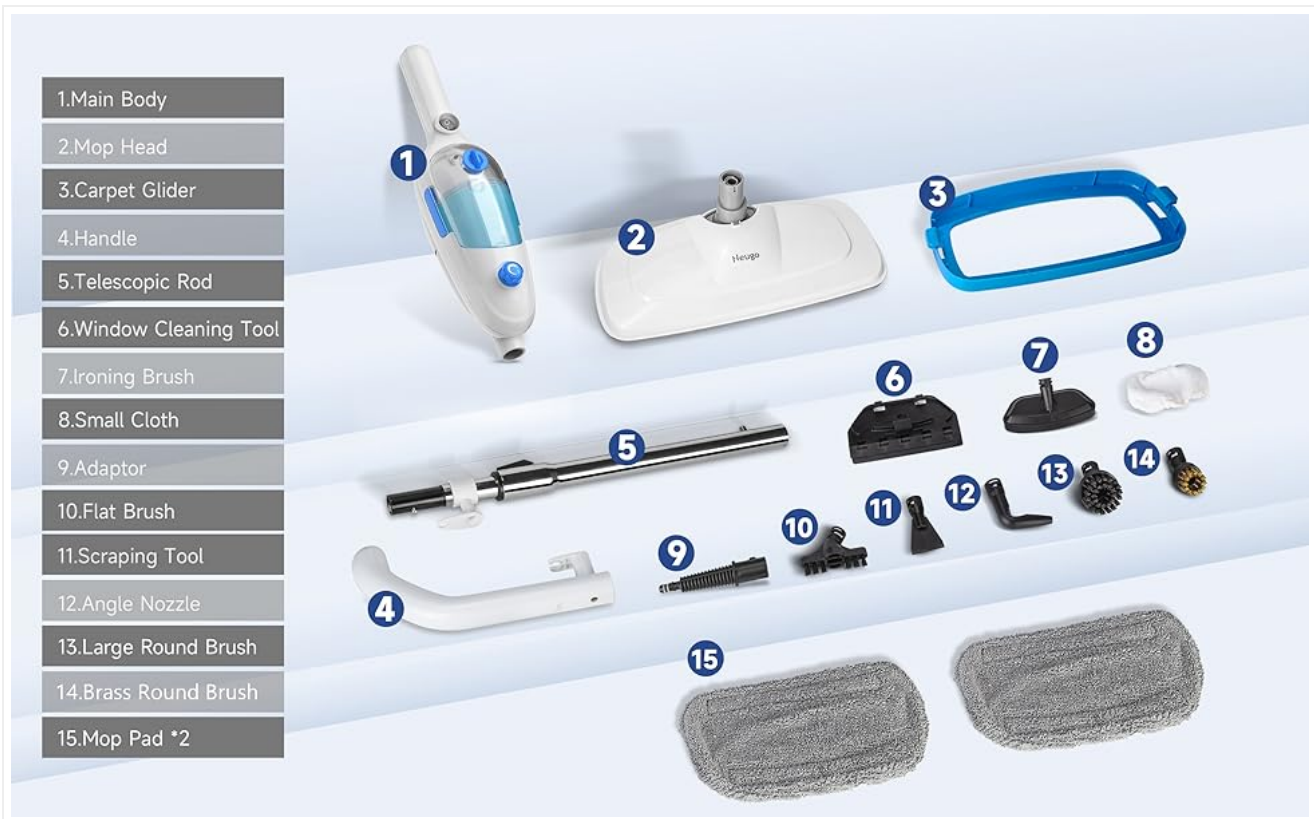


Image: The Neugo NE033M Steam Mop standing upright with its power cord neatly wrapped around the integrated cord management hooks on the handle, ready for storage.

6. TROUBLESHOOTING

If you encounter issues with your Neugo NE033M Steam Mop, refer to the following table for common problems and solutions.

| Problem | Possible Cause | Solution |
|--|---|--|
| No steam or low steam output | Water tank empty; Unit not plugged in; Not heated up; Mineral buildup. | Fill water tank; Check power connection; Wait 20 seconds for heat-up; Descale the unit. |
| Water leaking from mop head | Mop pad not attached correctly; Water tank cap loose; Unit not fully heated. | Ensure mop pad is secure; Tighten water tank cap; Allow unit to fully heat before use. |
| Unit not turning on | No power; Power button not pressed. | Check power outlet and cord; Press power button firmly. |
| Difficulty detaching components (e.g., water tank, mop head) | Components are stiff or not aligned correctly; Release buttons not fully engaged. | Ensure unit is cool and unplugged. Press release buttons firmly and simultaneously if applicable. Apply gentle, steady pressure. Refer to assembly diagrams for correct alignment. |

If the problem persists after trying these solutions, please contact Neugo customer support.

7. SPECIFICATIONS

| Feature | Detail |
|---------------------|------------------------------------|
| Model Name | NE033M |
| Brand | Neugo |
| Wattage | 1200 watts |
| Voltage | 110 Volts |
| Tank Volume | 15.2 Fluid Ounces (approx. 450 ml) |
| Heat Time | 20 Seconds |
| Maximum Temperature | 230 Degrees Fahrenheit (110°C) |
| Power Source | AC |
| Cord Length | 23 ft (approx. 7 m) |
| Item Weight | 6.3 pounds |
| Color | White |
| UPC | 767461078664 |

8. WARRANTY AND SUPPORT

8.1 Warranty Information

For information regarding the warranty coverage for your Neugo NE033M Steam Mop, please refer to the warranty card included in your product packaging or contact Neugo customer support directly. Keep your proof of purchase for warranty claims.

8.2 Customer Support

If you have any questions, require assistance, or need to report an issue with your product, please contact Neugo customer support. Contact details can typically be found on the product packaging, the official Neugo website, or through your purchase platform.