

## Brookstone BK11-PD20-WT

# Brookstone 3-in-1 Wireless Charging Station User Manual

Model: BK11-PD20-WT

## INTRODUCTION

Thank you for choosing the Brookstone 3-in-1 Wireless Charging Station. This versatile device is designed to efficiently charge your compatible Apple iPhone, Apple Watch, and AirPods simultaneously, providing a clutter-free charging experience. It includes an 18W wall charger and a USB-C cable for immediate use. Please read this manual thoroughly before operation to ensure proper use and to maximize the lifespan of your product.

## PACKAGE CONTENTS

Please verify that all items listed below are included in your package:

- 1 x Brookstone 3-in-1 Wireless Charging Station
- 1 x 18W Wall Charger
- 1 x USB-C Cable
- 1 x User Guide (this manual)

## PRODUCT OVERVIEW

Familiarize yourself with the components of your charging station:

# KEEP YOUR DESK ORGANIZED AND NEAT

With our multifunctional wireless charger

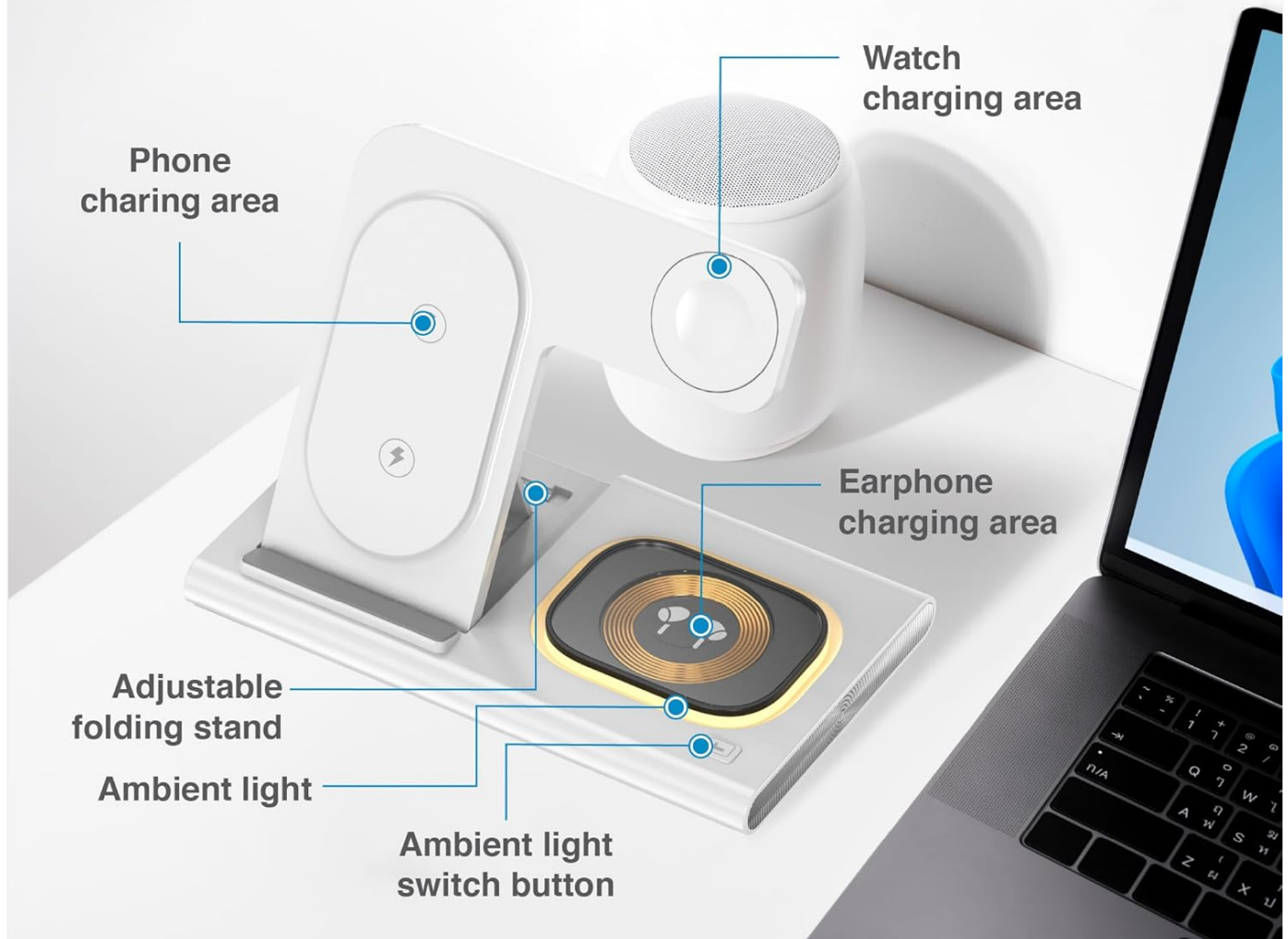


Image: Labeled diagram showing the phone charging area, watch charging area, earphone charging area, adjustable folding stand, ambient light, and ambient light switch button.

- **Phone Charging Area:** Vertical stand for wireless phone charging.
- **Watch Charging Area:** Dedicated magnetic charging pad for Apple Watch.
- **Earphone Charging Area:** Flat wireless charging pad for AirPods or other compatible earbuds.
- **Adjustable Folding Stand:** Allows for compact storage and multi-angle viewing.
- **Ambient Light:** Integrated light for subtle illumination.
- **Ambient Light Switch Button:** Controls the ambient light.

## SETUP

1. **Unpack:** Carefully remove all components from the packaging.
2. **Connect Power:**
  - Connect the USB-C cable to the input port on the back of the charging station.

- Plug the other end of the USB-C cable into the provided 18W Wall Charger.
- Insert the 18W Wall Charger into a standard wall outlet.

3. **Position the Stand:** Adjust the folding stand to your desired angle for optimal viewing and charging. The stand can be used in both vertical and horizontal orientations for your phone.



Image: The Brookstone 3-in-1 Wireless Charging Station connected to power, with an iPhone, Apple Watch, and AirPods charging simultaneously. An 18W wall charger and USB-C cable are also shown.

## OPERATING INSTRUCTIONS

### Charging Your Devices

Ensure the charging station is connected to power before placing devices.

- **For iPhone:** Place your compatible iPhone (iPhone 12, 13, 14, 15 series, or iPhone with compatible MagSafe cases) onto the vertical phone charging stand. The phone will magnetically align and begin charging. The charging

station supports 15W wireless charging for compatible devices.

- **For Apple Watch:** Place your Apple Watch (Series 1-9, SE, Ultra, Ultra 2) onto the magnetic watch charging area. Ensure the watch is properly seated for charging to begin.
- **For AirPods:** Place your AirPods (Pro 2, 3, Pro, 2, 1) or other Qi-compatible wireless earbuds case onto the flat earphone charging area.

## MULTI ANGLE CHARGING MODE FOR CONVENIENCY

**Brookstone®**



Video  
call



Read  
book



Listen  
music



Watch  
movie



Meeting



Image: The charging station demonstrating multi-angle charging modes, including vertical for video calls or reading, and horizontal for watching movies. An iPhone, Apple Watch, and AirPods are shown charging.

### Ambient Light Control

Press the ambient light switch button located on the charging station to turn the ambient light on or off.

### SAFETY INFORMATION

To ensure safe operation and prevent damage, please observe the following precautions:



- Do not disassemble, modify, or repair the device.
- Keep the device away from water, moisture, and high temperatures.
- Avoid dropping or subjecting the device to strong impacts.
- Do not place metal objects or foreign materials on the charging pads, as this may interfere with charging or cause overheating.
- Use only the provided 18W wall charger and USB-C cable, or other certified power adapters.
- Ensure proper ventilation around the charging station during use.
- This charging station features built-in protections against over-current, over-temperature, and over-voltage to safeguard your devices.

**Brookstone®**

## CHARGE SAFELY, CHARGE SMARTLY

- Over-current protection
- Over-temperature protection
- Over-voltage protection



*Image: The charging station with text highlighting its safety features: Over-current protection, Over-temperature protection, and Over-voltage protection.*

### TROUBLESHOOTING

If you encounter issues with your charging station, please refer to the following common problems and solutions:

Problem	Possible Cause	Solution
Device not charging.	Not properly aligned. Case too thick. Power adapter not connected. Incompatible device.	Re-position the device on the charging area. Remove phone case if it's thicker than 5mm or contains metal. Ensure the power adapter is securely plugged into the wall and the charging station. Verify your device is Qi-compatible and listed as compatible (Apple iPhone 12-15, Apple Watch, AirPods).
Slow charging.	Using a non-18W power adapter. Too many devices charging simultaneously.	Use the provided 18W wall charger. Ensure only compatible devices are charging.
Charging station indicator light off.	No power. Ambient light turned off.	Check power connection to wall outlet and charging station. Press the ambient light switch button to turn it on.

## SPECIFICATIONS

Model Number	BK11-PD20-WT
Product Dimensions	8 x 7 x 1.2 inches
Item Weight	11.3 ounces
Input Voltage	12 Volts
Connectivity Technology	Wireless
Connector Type	USB Type C
Compatible Devices	Apple iPhone (12, 13, 14, 15 series, with compatible MagSafe cases), Apple Watch (Series 1-9, SE, Ultra, Ultra 2), Apple AirPods (Pro 2, 3, Pro, 2, 1), and other Qi-compatible smartphones/earbuds.
Included Components	3-in-1 wireless charger, 18W wall charger, USB-C cable, user guide
Special Feature	Includes 18W Wall Charger, Over-current protection, Over-temperature protection, Over-voltage protection, Foldable design.

## MAINTENANCE

To maintain the performance and appearance of your charging station:

- **Cleaning:** Disconnect the power before cleaning. Use a soft, dry cloth to wipe the surface. Do not use abrasive cleaners or solvents.
- **Storage:** When not in use for extended periods, store the charging station in a cool, dry place, away from direct sunlight and extreme temperatures. The foldable design allows for compact storage.
- **Handling:** Handle the device with care. Avoid dropping it or placing heavy objects on it.

# CHARGE YOUR DEVICES WITH EASE ANYTIME, ANYWHERE

With our foldable and  
portable wireless pad





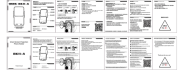
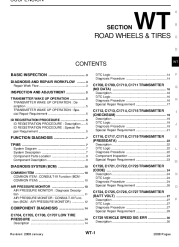
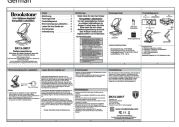

*Image: The Brookstone 3-in-1 Wireless Charging Station folded flat and being placed into a laptop bag, demonstrating its portability and ease of storage.*

## WARRANTY AND SUPPORT

For warranty information, technical support, or customer service inquiries, please refer to the warranty card included with your product or visit the official Brookstone website. Keep your purchase receipt as proof of purchase for any warranty claims.

**Manufacturer:** M&S Accessory Network



	<p><a href="#">2011 Infiniti QX56 Tire Pressure Monitoring System Service Manual</a></p> <p>Comprehensive service manual detailing the diagnosis, repair, and maintenance procedures for the Tire Pressure Monitoring System (TPMS) in the 2011 Infiniti QX56, including component descriptions, DTCs, and troubleshooting guides.</p>
	<p><a href="#">Brookstone DASH 3-in-1 Charging Case for iPhone 6 Plus - User Manual &amp; Specifications</a></p> <p>Official user manual and specifications for the Brookstone DASH 3-in-1 Charging Case for iPhone 6 Plus. Includes battery warnings, FCC information, charging instructions, troubleshooting, and warranty details.</p>
	<p><a href="#">BK11-A Smart Screen Projection Phone Holder User Manual</a></p> <p>User manual for the BK11-A Smart Screen Projection Phone Holder by Shenzhen Zhiding Manufacturing Co., Ltd. Details installation, product parameters, functions like wireless charging and screen projection, program usage, and important safety precautions.</p>
	<p><a href="#">2008 Nissan Rogue Tire Pressure Monitoring System (TPMS) Service Manual</a></p> <p>Comprehensive service manual for the 2008 Nissan Rogue, detailing the Tire Pressure Monitoring System (TPMS) diagnosis, inspection, repair, and specifications. Includes troubleshooting guides for common TPMS issues and diagnostic trouble codes (DTCs).</p>
	<p><a href="#">Brookstone BK15-3M1F 3-in-1 Foldable MagSafe Compatible Wireless Charging Station - Operation Manual</a></p> <p>This operation manual provides detailed instructions for the Brookstone BK15-3M1F 3-in-1 foldable MagSafe compatible wireless charging station. Learn about setup, charging your devices, specifications, safety guidelines, and support.</p>
	<p><a href="#">Brookstone Stack Versatile Stereo System User Manual</a></p> <p>Discover the Brookstone Stack, a versatile stereo system designed for small spaces, featuring an iPod/iPhone docking station, FM radio, and alarm clock functionalities. This comprehensive user manual provides detailed instructions for setup, operation, troubleshooting, and maintenance, ensuring optimal audio experience and device compatibility.</p>