

WOODBIDGE BJ-600

WOODBIDGE BJ-600 72-Inch Whirlpool and Air Bath Heated Soaking Combination Tub

User Manual

1. INTRODUCTION AND SAFETY INFORMATION

This manual provides essential information for the safe installation, operation, and maintenance of your WOODBRIDGE BJ-600 Whirlpool and Air Bath Heated Soaking Combination Tub. Please read all instructions carefully before installation and use. Retain this manual for future reference.

Important Safety Instructions:

- **Electrical Safety:** Installation must be performed by a qualified electrician in accordance with all local and national electrical codes. The tub requires a dedicated 120V 30AMP breaker. Ensure proper grounding.
- **Water Temperature:** Do not exceed 104°F (40°C). Prolonged immersion in hotter water can cause hyperthermia.
- **Children:** Supervise children at all times when they are near or in the tub.
- **Health Conditions:** Consult a physician before use if you have heart disease, high blood pressure, diabetes, or are pregnant.
- **Chemicals:** Use only recommended cleaning agents. Avoid abrasive cleaners or solvents that can damage the tub surface or components.
- **No Unauthorized Modifications:** Do not modify the tub or its components. This may void the warranty and create safety hazards.



Figure 1: The WOODBRIDGE BJ-600 72-inch freestanding bathtub.

2. PRODUCT FEATURES

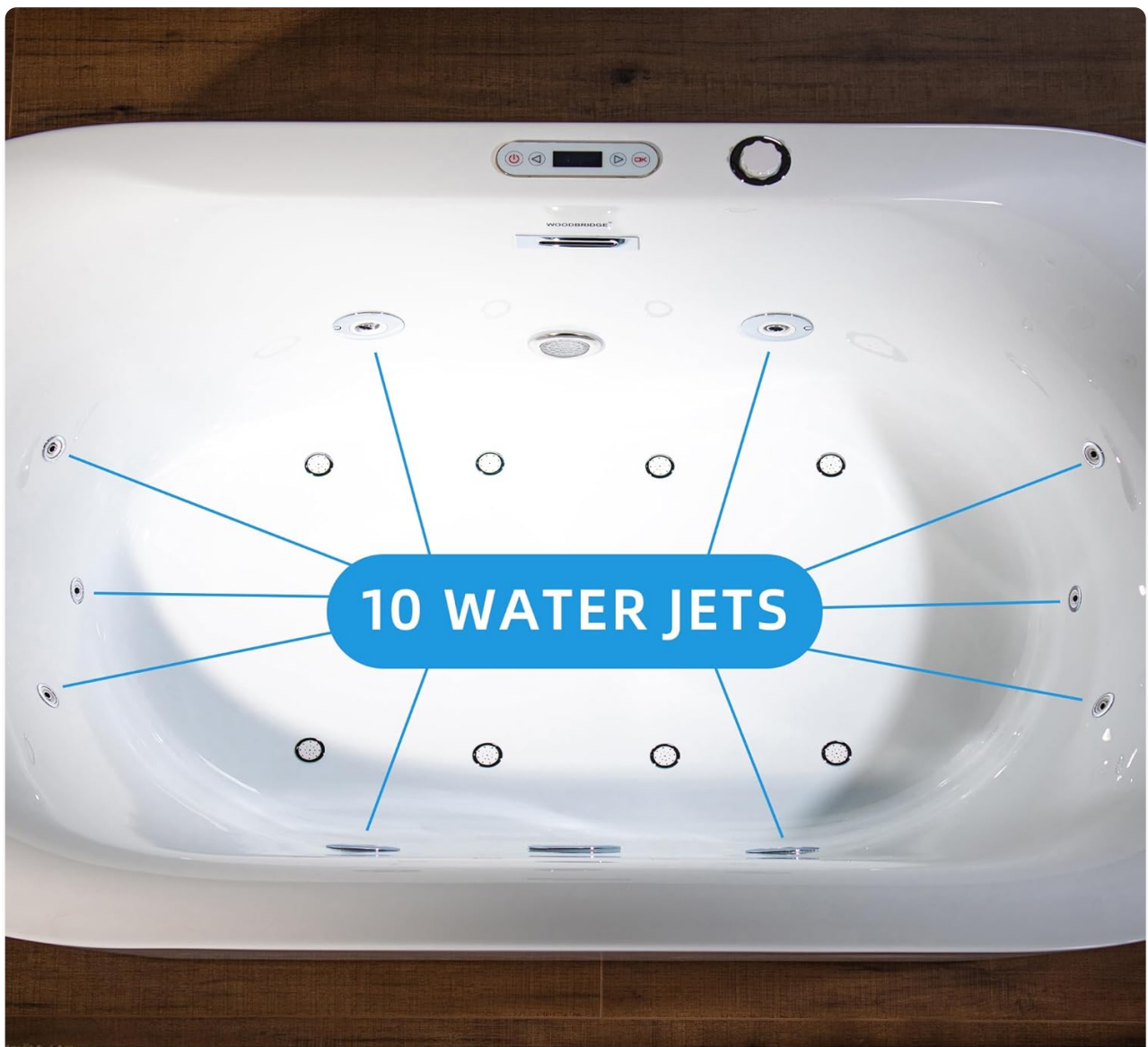
The WOODBRIDGE BJ-600 combines whirlpool and air bath functions with a heated soaking feature for an enhanced bathing experience.

- **Whirlpool Jets:** 6 adjustable body massage jets provide a concentrated hydro-massage. These jets can be adjusted 360 degrees to target specific areas.
- **Air Bubble Jets:** 10 whirlpool bubble bath jets deliver a gentle, effervescent full-body massage. The air bubble intensity is adjustable with three speed settings.
- **Inline Heater:** Maintains the water temperature during your bath, allowing for extended soaking without the need to add more hot water.
- **Chromotherapy Lighting:** Features an underwater multi-color LED light to enhance the bathing ambiance.

- **Control Panel:** An intuitive LED display panel manages all functions, including power, chromotherapy, wave massage, thermostat, and air bubble settings.
- **Construction:** Made from 100% high gloss white LUCITE acrylic, reinforced with ASHLAND resin and fiberglass for durability and a seamless design.

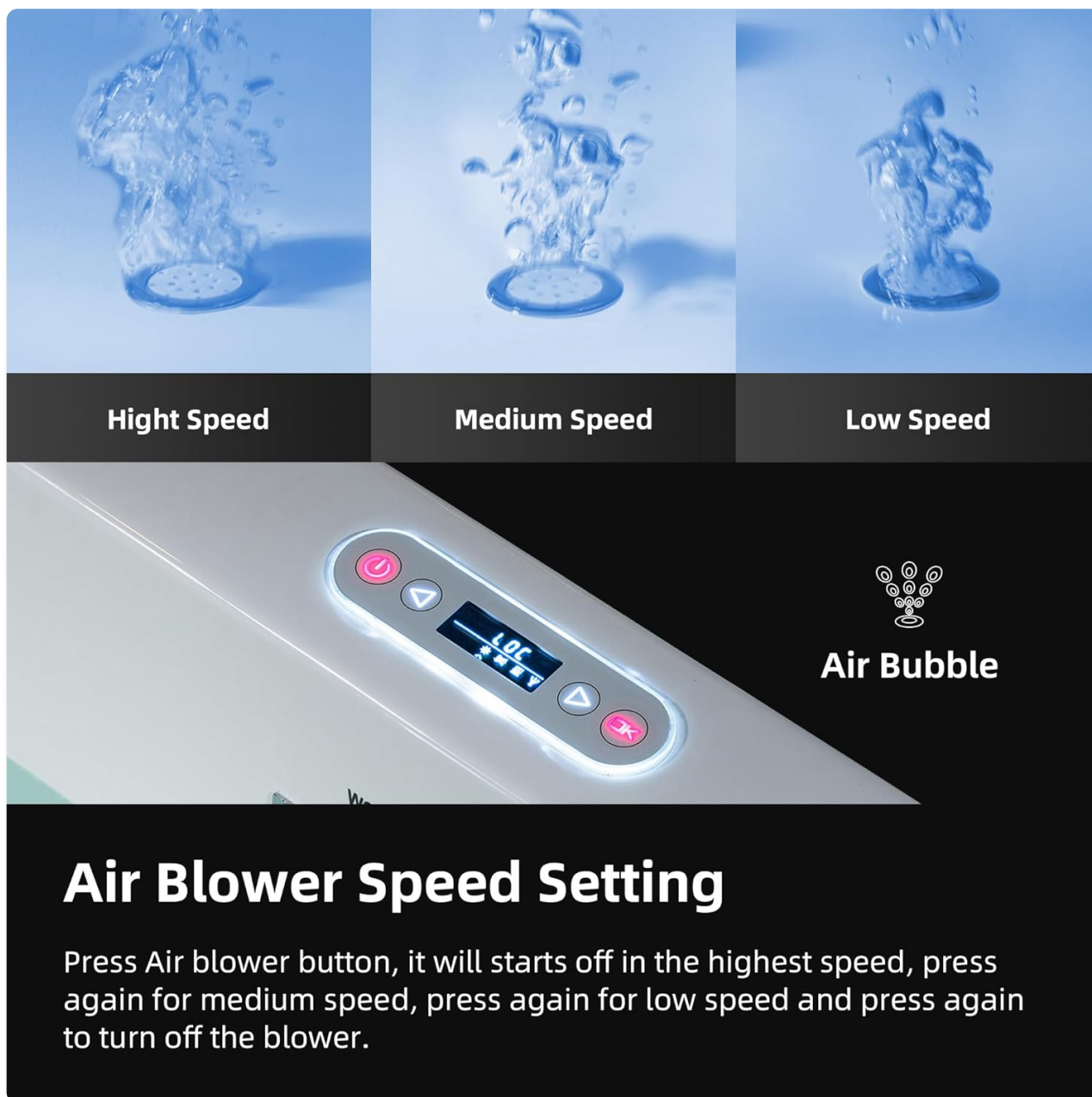


Figure 2: The BJ-600 tub with whirlpool function active.



Soothe sore muscles and joints or to reduce stress.

Figure 3: Illustration of whirlpool jets, back and feet jets, air jets, and chromotherapy light.



Air Blower Speed Setting

Press Air blower button, it will starts off in the highest speed, press again for medium speed, press again for low speed and press again to turn off the blower.

Figure 4: Layout of the 10 water jets within the tub.



Figure 5: Inline heater system diagram.

3. SETUP AND INSTALLATION

Proper installation is crucial for the safe and efficient operation of your bathtub. It is recommended that installation be performed by licensed professionals.

Pre-Installation Checklist:

- Verify all components are present: Bathtub, pre-assembled chrome finish drain and overflow, user guide.
- Ensure the installation area meets the required dimensions and weight capacity.
- Confirm electrical supply meets specifications: 1 Dedicated 120V 30AMP Breaker.
- Prepare plumbing for hot and cold water supply and drainage.

Dimensions:

- Exterior Dimension: 72" L x 35-3/8" W x 22-7/8" H
- Seating Dimension: 47-1/4" L x 23-5/8" W
- Water Depth to Overflow: 13-3/4" D
- Effective Tub Capacity: 74 Gallons



Figure 6: Detailed dimensions of the BJ-600 bathtub.

4. OPERATING INSTRUCTIONS

Familiarize yourself with the control panel to operate the tub's features.

Control Panel Overview:



Figure 7: LED Control Panel.

- **Power ON/OFF:** Press the power button to turn the tub system on or off.
- **Chromotherapy:** Press the chromotherapy button to activate the underwater LED lighting. Cycle through colors or set to a specific color.
- **Wave Massage:** Activates a pulsating jet action.
- **Thermostat:** Use the thermostat setting to adjust and maintain your desired water temperature.
- **Air Bubble:** Activates the air jets. Press repeatedly to cycle through High, Medium, and Low speeds, then off.
- **Navigation/OK:** Use the arrow buttons to navigate menu options and the OK button to confirm selections.

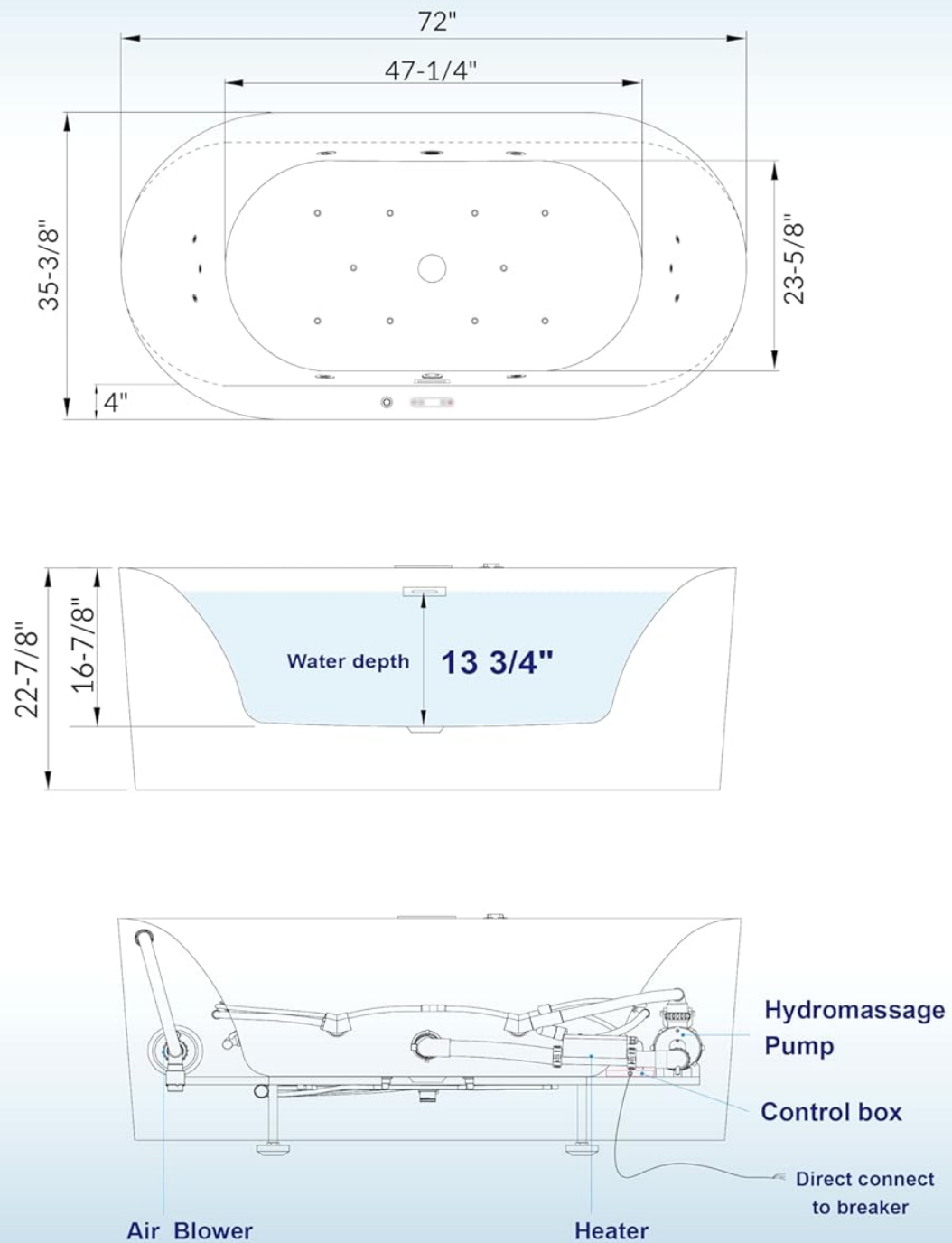
Using the Air Blower:

The air blower provides a gentle massage. To operate:

1. Press the Air Blower button on the control panel. It will start at the highest speed.
2. Press again for medium speed.
3. Press again for low speed.
4. Press a fourth time to turn off the blower.

WOODBIDGE®

BJ600



www.woodbridgebath.com

Figure 8: Air Blower Speed Settings.



Whirlpool Jets

Whirlpool tub provides a concentrated high-pressure massage



Back & Feet Jets

- Accurately targets back and feet
- 360 degree direction adjustable



Air Jets

Air tub provides a gentle and effervescent full body massage



Chromatherapy

Provides unique, multi-color LED lighting to set the ambiance



Figure 9: Chromotherapy lighting in operation.

5. MAINTENANCE AND CLEANING

Regular maintenance ensures the longevity and hygienic operation of your tub.

General Cleaning:

- Clean the tub surface with a soft cloth and a non-abrasive, mild bathroom cleaner.
- Avoid cleaners containing ammonia, bleach, or abrasive particles, as these can damage the acrylic finish.
- Rinse thoroughly after cleaning to remove any residue.

Jet and Plumbing System Cleaning:

To prevent buildup in the jet and plumbing system:

1. Fill the tub with warm water above the jets.

- 2. Add 2-3 tablespoons of a low-foaming dishwasher detergent or a specialized jetted tub cleaner.
- 3. Run the whirlpool jets for 10-15 minutes.
- 4. Drain the tub and refill with clean water.
- 5. Run the jets again for 5 minutes to rinse the system.
- 6. Drain the tub completely.

6. TROUBLESHOOTING

Refer to this section for common issues and their potential solutions.

Problem	Possible Cause	Solution
Tub does not power on.	No power supply; GFCI tripped; loose wiring.	Check circuit breaker and GFCI. Ensure power cord is securely connected. Consult an electrician if issues persist.
Jets are weak or not working.	Low water level; clogged jets; pump issue.	Ensure water level is above jets. Clean jets. Check for obstructions. Contact support if pump is suspected.
Heater not maintaining temperature.	Heater element malfunction; incorrect setting.	Verify thermostat setting. Ensure water level is adequate. Contact support if heater is faulty.
Air blower not working or weak.	Blower motor issue; clogged air intake.	Check for obstructions in air intake. Cycle through speed settings. Contact support if motor is faulty.
Water leaks from tub.	Loose drain fitting; damaged plumbing.	Inspect drain and overflow connections. Tighten if loose. Contact a plumber for damaged plumbing.

If you encounter problems not listed here or if the suggested solutions do not resolve the issue, please contact WOODBRIDGE customer support.

7. SPECIFICATIONS

Attribute	Detail
Model Number	BJ-600
Exterior Dimensions	72" L x 35-3/8" W x 22-7/8" H
Effective Tub Capacity	74 Gallons
Water Depth to Overflow	13-3/4" D

Attribute	Detail
Material	Acrylic (LUCITE) with Fiberglass Reinforcement
Power Requirements	1 Dedicated 120V 30AMP Breaker
Jets	6 Adjustable Body Massage Jets, 10 Whirlpool Bubble Bath Jets
Heater	Inline Heater
Certifications	UL1795, ASME A112.19.7/CSA B45.10, CSA B45.5/IAPMO Z124, CSA C22.2 No.218. IPC and NPC.
Included Components	Bathtub, Pre-assembled chrome finish drain and overflow

8. WARRANTY AND SUPPORT

Warranty Information:

WOODBIDGE Hydromassage bathtubs are certified to UL1795 and comply with various industry standards. An additional 1-year warranty is available upon product registration on the official WOODBRIDGE website. Please refer to the warranty card included with your product for full terms and conditions.

Customer Support:

For technical assistance, parts, or warranty claims, please contact WOODBRIDGE customer support. Contact information can typically be found on the WOODBRIDGE website or in the documentation provided with your purchase.

Online Resources: For additional information and support, visit the official [WOODBRIDGE website](#).



[WOODBRIDGE Whirlpool & Air Bathtub Installation and Care Guide](#)

This guide provides comprehensive instructions for installing, caring for, and maintaining WOODBRIDGE Whirlpool and Air Bathtubs. It includes safety rules, electrical requirements, warranty information, and maintenance tips.



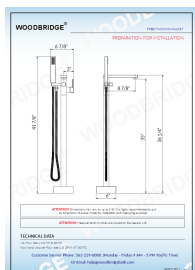
[WOODBRIDGE Air and Whirlpool Heated Bathtub Installation and Care Guide](#)

Comprehensive installation and care guide for WOODBRIDGE Air and Whirlpool Heated Bathtubs, including models BJ100, BJ400, BM400, BJ500, BM500, BJ600, and BJ700. Covers safety, product requirements, roughing-in, site requirements, installation steps, electrical connections, control panel operation, troubleshooting, and warranty information.



[WOODBRIDGE BJ200 & BJ300 Air and Whirlpool Heated Bathtub Installation and Care Guide](#)

Comprehensive installation and care guide for WOODBRIDGE BJ200 and BJ300 Air and Whirlpool Heated Bathtubs. Covers product requirements, roughing-in, site preparation, electrical setup, safety precautions, and warranty information.



[Woodbridge Freestanding Faucet Installation Guide](#)

This guide provides detailed instructions for the installation of the Woodbridge Freestanding Faucet, including parts lists, tools required, and step-by-step assembly.



[WOODBRIDGE Air Bathtub Installation and Care Guide](#)

This guide provides detailed instructions for the installation, operation, and maintenance of WOODBRIDGE Air Bathtubs, including models B0170, B0101/BTS0101, and B0102/BTS0102. It covers safety precautions, product requirements, electrical setup, warranty information, and cleaning tips.



[WOODBRIDGE Modern Alcove Bathtub Installation and Care Guide](#)

Comprehensive installation and care guide for WOODBRIDGE Modern Alcove Bathtubs, including model numbers BS5430R, BS5430L, BS6030R, BS6030L, BS6032R, and BS6032L. Covers safety rules, installation steps, electrical requirements, and maintenance.

