

Manuals+

[Q & A](#) | [Deep Search](#) | [Upload](#)

manuals.plus /

- › [Avylet](#) /
- › [Avylet 4K Dash Cam A2S Dual Car Camera User Manual](#)

Avylet A2S

Avylet 4K Dash Cam A2S Dual Car Camera User Manual

Model: A2S

1. INTRODUCTION

The Avylet A2S Dash Cam is a dual-channel car camera system designed to record your journeys in high definition. It features 4K front recording and 1080P rear recording, equipped with advanced functionalities such as Wi-Fi connectivity, a 2-inch IPS screen, super night vision, 24-hour parking monitoring, G-sensor, and loop recording. This manual provides detailed instructions for installation, operation, and maintenance to ensure optimal performance and safety.



Image 1.1: Avylet A2S 4K Dual Dash Cam and companion mobile application.

2. PACKAGE CONTENTS

Please check the package contents carefully. If any items are missing or damaged, contact customer support.

- 1x Avylet A2S Front Dash Cam
- 1x A2S Rear Camera
- 1x Rear Camera Cable
- 1x Car Charger with Type-C Cable
- 1x Suction Cup Mount
- 1x Adhesive Mount
- 1x Adhesive Support for Rear Camera
- 2x Adhesive Pads
- 1x User Manual

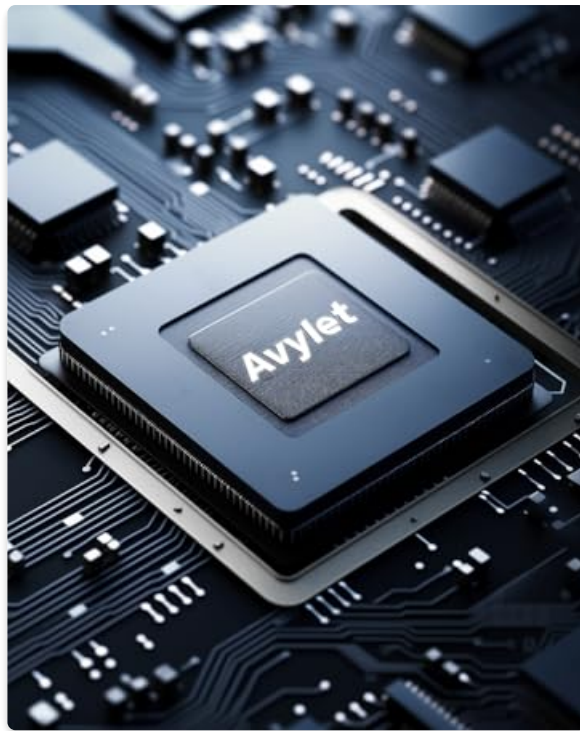


Image 2.1: All components included in the Avylet A2S Dash Cam package.

3. PRODUCT OVERVIEW

The Avylet A2S system consists of a main front camera unit and a smaller rear camera. The front unit features a 2-inch IPS screen for easy viewing and menu navigation.

Key Features:

- Dual Camera (Front 4K, Rear 1080P)
- F1.6 Aperture Lens
- Super Night Vision
- 24-Hour Parking Monitoring
- G-Sensor for Emergency Recording
- Loop Recording
- 170° Front Wide Angle, 150° Rear Wide Angle
- Integrated Wi-Fi for App Control

Parkmonitor

Parken ohne Sorgen, 24 Stunden Schutz



Bewegungserkennung



Zeitleupenaufnahme

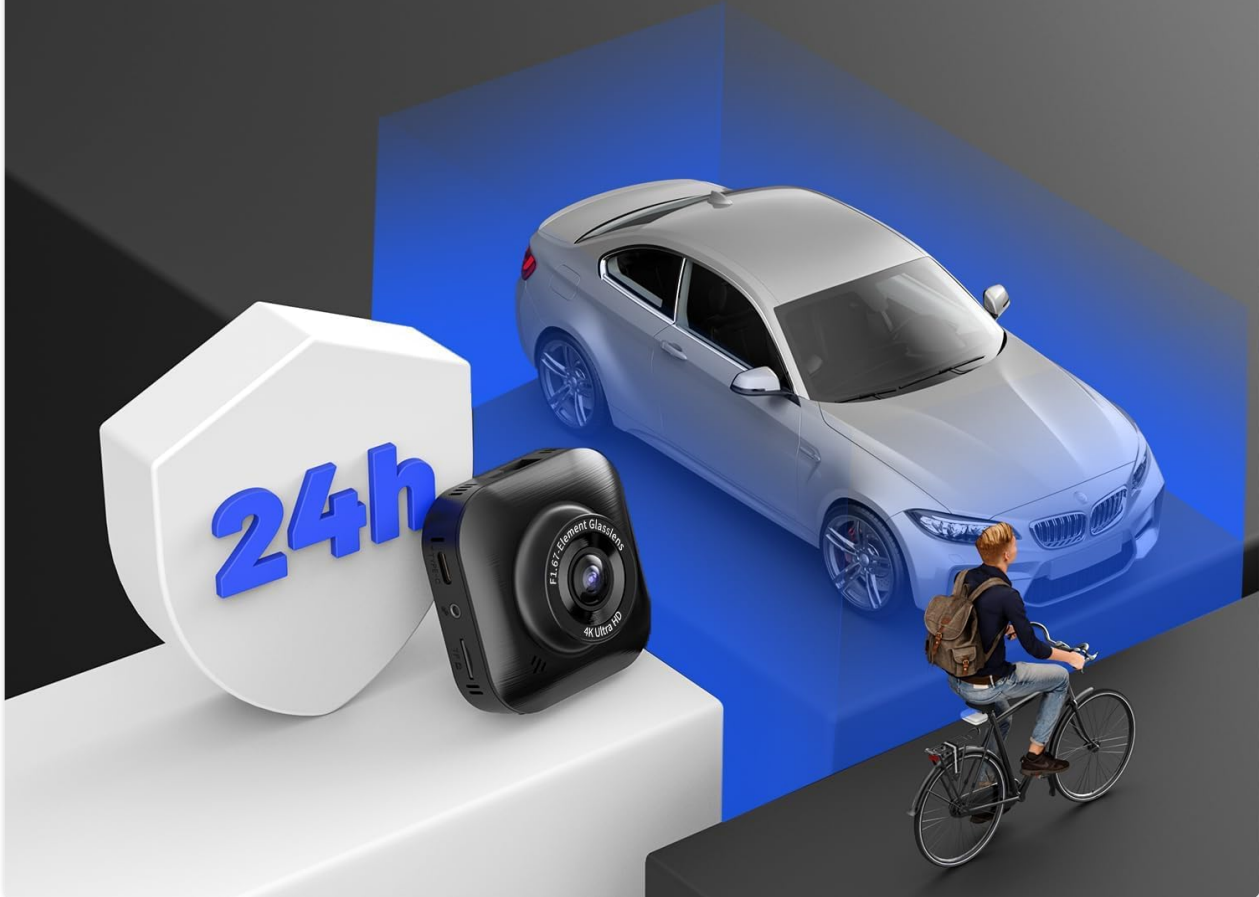


Image 3.1: Overview of the Avylet A2S Dash Cam and its main features.

4. SETUP AND INSTALLATION

4.1 Prepare the MicroSD Card

Insert a high-speed (Class 10 or U3 recommended) MicroSD card (up to 128GB) into the front dash cam. Format the card within the camera's settings menu before first use to ensure proper functionality.

4.2 Mount the Front Camera

1. Clean the area on your windshield where you intend to mount the camera.
2. Attach the suction cup or adhesive mount to the windshield. Ensure the camera is positioned to capture the road ahead without obstructing your view.
3. Secure the front dash cam to the chosen mount. The 360-degree swivel support allows for easy adjustment of the recording angle.

Controllo tramite App Wi-Fi

Facile da configurare, visualizza video in tempo reale e modifica le impostazioni tramite l'app Avylet.



Image 4.1: Proper placement of the Avylet A2S Dash Cam on the windshield.

4.3 Connect the Rear Camera

1. Route the rear camera cable from the front unit to the rear of the vehicle. Carefully tuck the cable along the headliner and A-pillars to keep it tidy and out of the way.
2. Mount the rear camera on the rear windshield using the adhesive support.
3. Connect the rear camera cable to the designated port on the front dash cam.

4.4 Power Connection

Connect the car charger to the dash cam's Type-C port and plug the other end into your vehicle's cigarette lighter socket. The dash cam will automatically power on and begin recording when the vehicle's ignition is turned on.

Schleife Aufnahme&G-sensor

Automatische und kontinuierliche Videoaufzeichnung.
Sperren Sie abgestürzte Videos ohne Überschreiben.



Image 4.2: Wiring diagram for connecting the front and rear dash cameras to the car's power supply.

5. OPERATING INSTRUCTIONS

5.1 Power On/Off

The dash cam automatically powers on and begins recording when the vehicle's ignition is turned on. It powers off automatically when the ignition is off.

5.2 Screen Display

The 2-inch IPS screen displays a live view of the front and rear cameras, recording status, and menu options. The 360-degree swivel mount allows for easy adjustment of the screen angle.



Image 5.1: The 2-inch IPS screen provides a clear view and the mount allows for flexible positioning.

5.3 Wi-Fi and App Control

1. Download the "Avylet" app from your smartphone's app store.
2. Enable Wi-Fi on the dash cam via its settings menu. The Wi-Fi SSID and password will be displayed on the dash cam screen.
3. Connect your smartphone to the dash cam's Wi-Fi network.
4. Use the app to view live footage, play back recorded videos, download files to your phone, and adjust camera settings.

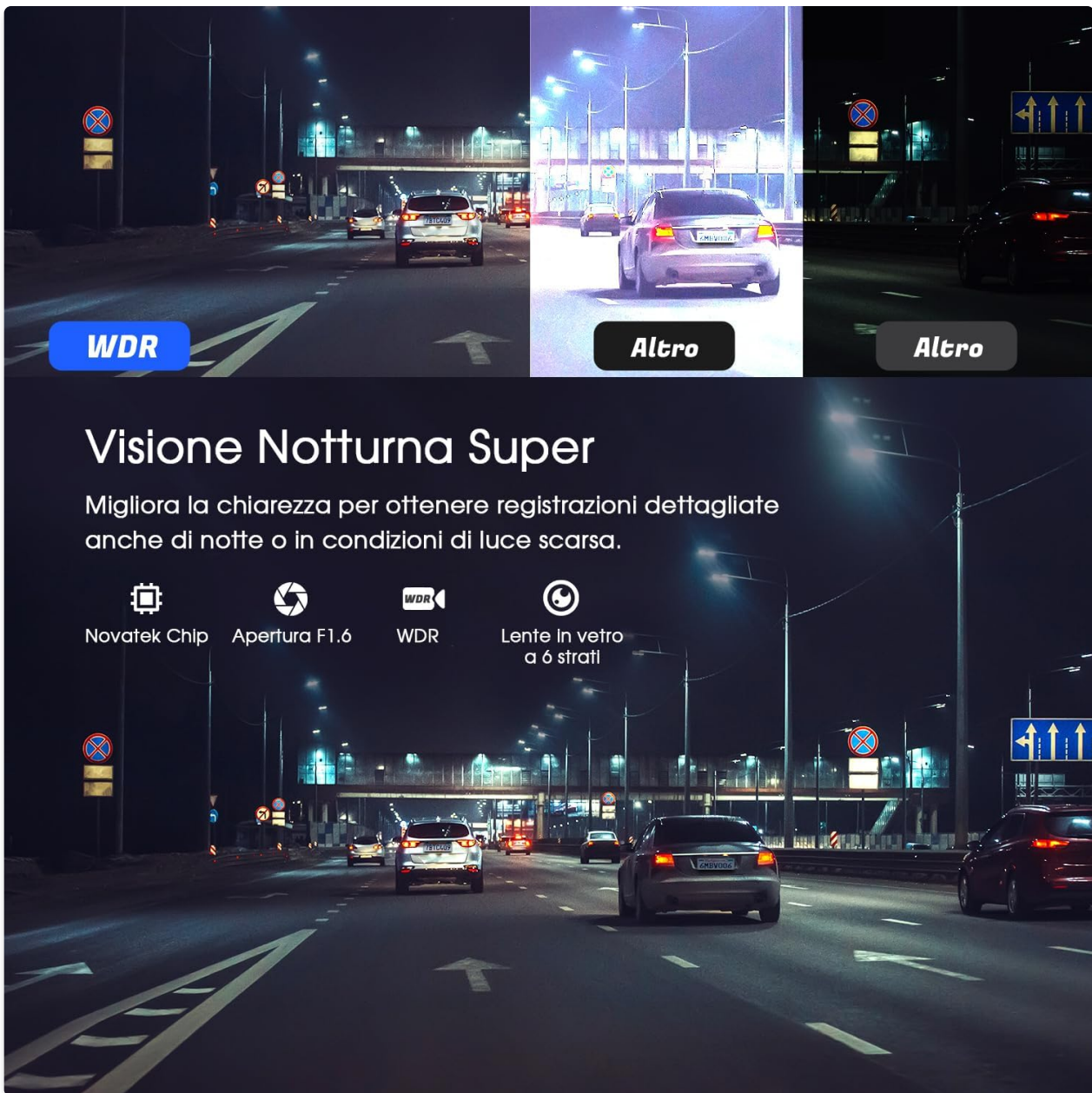


Image 5.2: Controlling the dash cam and viewing live footage via the Avylet mobile app.

5.4 Dual Recording (4K Front + 1080P Rear)

The Avylet A2S records simultaneously from both the front (4K) and rear (1080P) cameras, providing comprehensive coverage of your surroundings. This dual recording capability captures every detail clearly and helps eliminate blind spots.

Registrazione a Doppia Canale

Cattura ogni dettaglio in modo chiaro ed elimina i punti ciechi per offrire una protezione completa durante la guida.

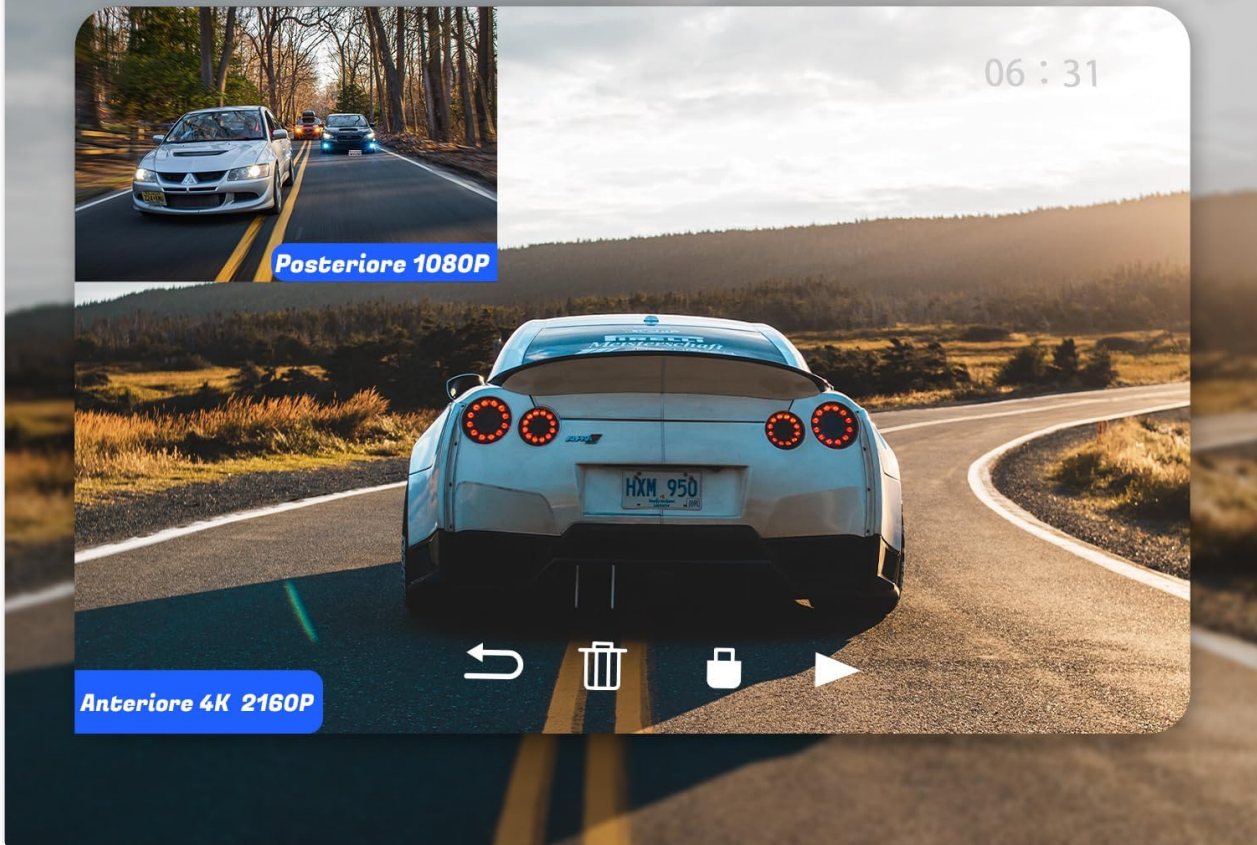


Image 5.3: Example of dual channel recording, displaying both front and rear camera views.

5.5 Super Night Vision & WDR

Equipped with an F1.6 aperture lens, 6-layer glass, and WDR (Wide Dynamic Range) technology, the dash cam enhances clarity and detail in low-light conditions. This ensures clear and detailed recordings even at night or in challenging lighting environments by optimizing light absorption and managing exposure.

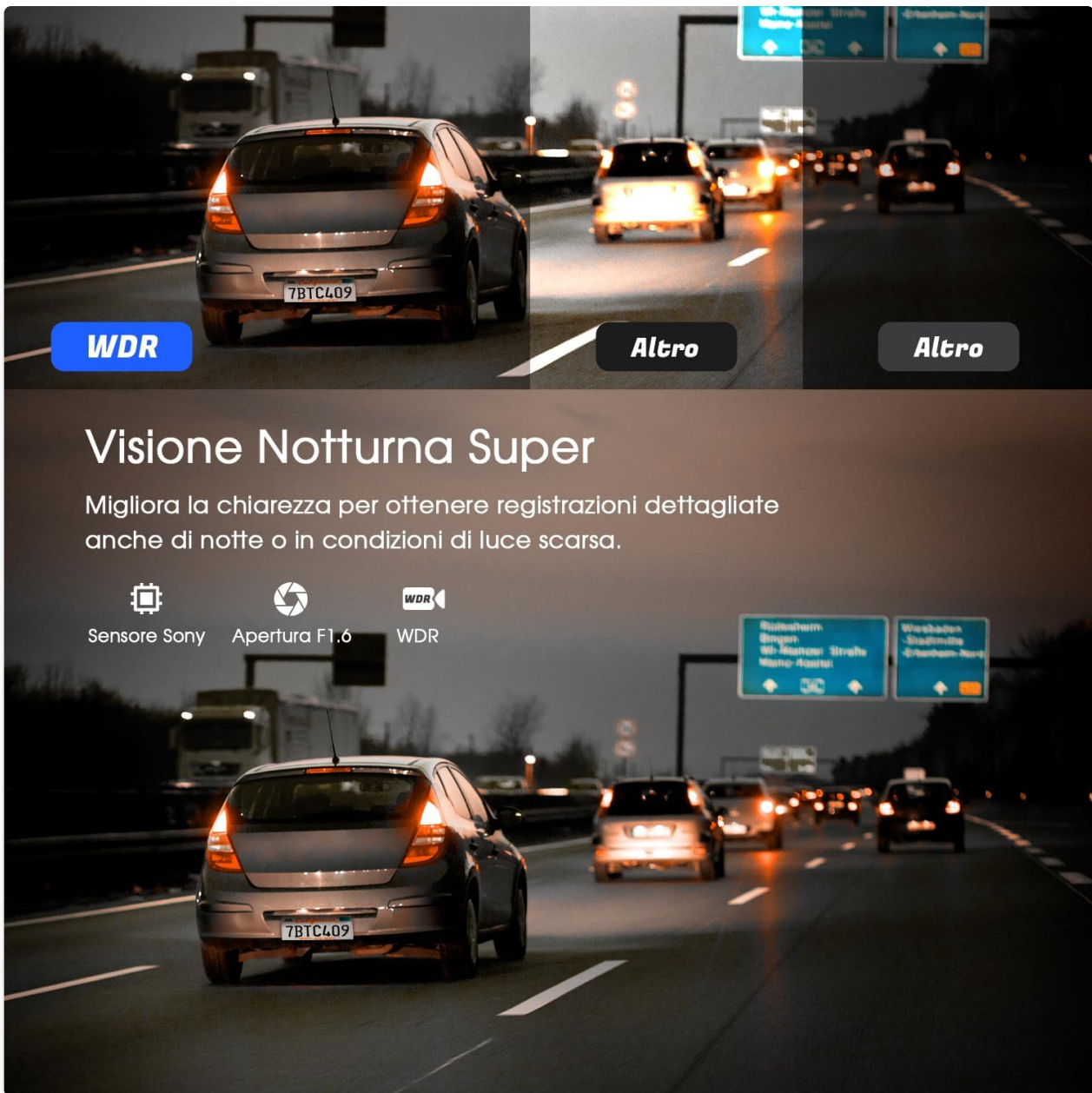


Image 5.4: Improved visibility and detail in low-light conditions with Super Night Vision and WDR.

5.6 Loop Recording

When the memory card is full, the dash cam automatically overwrites the oldest unlocked video files to ensure continuous recording without manual intervention. Important footage locked by the G-sensor will not be overwritten.



Image 5.5: Loop recording ensures continuous video capture, while the G-sensor protects critical footage.

5.7 G-Sensor (Emergency Recording)

The built-in G-sensor detects sudden impacts or collisions. When an event is detected, the current video segment is automatically locked and saved to a protected folder, preventing it from being overwritten by loop recording. The sensitivity of the G-sensor can be adjusted in the settings menu (Low, Medium, High).

5.8 24-Hour Parking Monitor

For continuous surveillance when your vehicle is parked, the 24-hour parking monitor function can be activated. This feature requires a dedicated hardwire kit (sold separately) to provide constant power to the dash cam.

- **Motion Detection:** The dash cam automatically starts recording a 30-second video when motion is detected around the parked vehicle.
- **Time-Lapse Recording:** Records at a low frame rate to save storage space while capturing extended parking surveillance.

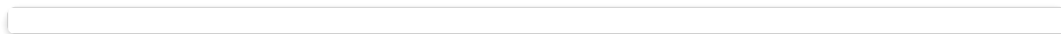


Image 5.6: The 24-hour parking monitor provides continuous protection for your vehicle.

6. MAINTENANCE

6.1 MicroSD Card Care

Regularly format the MicroSD card (monthly recommended) to prevent data corruption and ensure optimal performance. Always use a high-quality, genuine MicroSD card from a reputable brand.

6.2 Cleaning

Gently clean the camera lenses with a soft, lint-free cloth. Avoid using abrasive cleaners or solvents, as these can damage the lens coating.

6.3 Temperature Resistance

The Avylet A2S Dash Cam utilizes supercapacitors, making it resistant to extreme temperatures. It is designed to operate reliably in temperatures ranging from -20°C to 70°C (-4°F to 158°F). Avoid prolonged exposure to temperatures outside this range to ensure longevity.



Image 6.1: Supercapacitors enable the dash cam to withstand extreme temperatures from -20°C to 70°C.

7. TROUBLESHOOTING

If you encounter any issues with your Avylet A2S Dash Cam, please refer to the following common solutions:

- **Live View Issues in App:** If you experience problems viewing the live feed in the app, try disabling your phone's cellular data. This can sometimes interfere with the dash cam's Wi-Fi signal.
- **Cannot View Videos from Memory Card** If you are unable to view videos directly from the memory card, try downloading them to the app's album on your smartphone.
- **Dash Cam Not Powering On:** Check all power connections. Ensure the car charger is securely plugged into both the dash cam and the vehicle's cigarette lighter socket. Verify that the vehicle's ignition is on.
- **Recording Stops Unexpectedly:** Ensure the MicroSD card is formatted correctly and is not full (unless loop recording is active and protecting files). Consider formatting the card or trying a different high-quality MicroSD card.
- **Poor Video Quality:** Clean the camera lenses with a soft cloth. Check the resolution settings in the camera menu or app to ensure they are set to your desired quality (e.g., 4K for front).
- **G-Sensor Too Sensitive/Not Sensitive Enough:** Adjust the G-sensor sensitivity level in the dash cam's settings menu to suit your driving conditions.

For further assistance, please contact Avylet customer support.

8. SPECIFICATIONS

Feature	Specification
Brand	Avylet

Model	A2S
Screen Size	2 Inches IPS
Video Resolution	4K (Front), 1080P (Rear)
Front Lens Angle	170°
Rear Lens Angle	150°
Connectivity	Wi-Fi
Storage	MicroSD (up to 128GB, not included)
Special Features	G-Sensor, Loop Recording, 24H Parking Monitor (requires hardwire kit), Super Night Vision, WDR, App Control, Super Capacitors
Operating Temperature	-20°C to 70°C (-4°F to 158°F)
Dimensions	3.2 x 6.3 x 6.3 cm
Weight	85 grams

9. WARRANTY AND SUPPORT

Avylet is committed to providing high-quality products and expert customer support. While specific warranty details are not provided in this manual, please retain your proof of purchase for any warranty claims. For technical assistance, troubleshooting, or any questions regarding your Avylet A2S Dash Cam, please contact Avylet customer support through the official channels provided with your product or on the Avylet website.