

MEETION Director-C-2-BT

MEETION Director-C-2 Ergonomic Keyboard and Mouse Wireless Combo User Manual

Model: Director-C-2-BT

PRODUCT OVERVIEW

The MEETION Director-C-2 is an ergonomic wireless keyboard and mouse combo designed for enhanced comfort and productivity across various operating systems. It features multi-mode connectivity (2.4G USB and Bluetooth) and rechargeable batteries.



Image: The MEETION Director-C-2 ergonomic keyboard and vertical mouse combo, showcasing its split design, integrated palm rest, and wireless connectivity options (USB dongle, Bluetooth 1, Bluetooth 2).

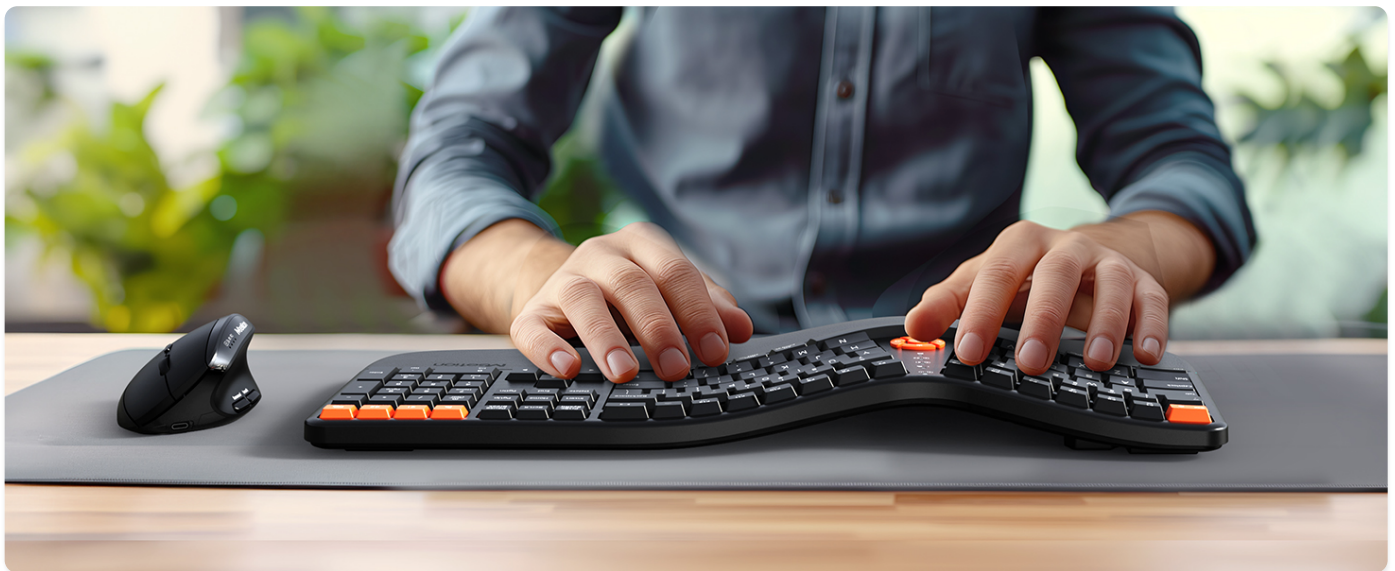


Image: An overhead view of the MEETION Director-C-2 ergonomic keyboard and mouse set positioned on a wooden desk, illustrating its full size and ergonomic contours.

SETUP AND CONNECTION

The MEETION Director-C-2 offers versatile connectivity options, including 2.4G wireless via USB receiver and two Bluetooth channels. Follow the steps below to connect your devices.

2.4G Wireless Connection

1. Turn on the power switch for both the keyboard and the mouse. The keyboard switch is located on the underside, and the mouse switch is on its base.
2. Locate the USB receiver, typically stored in the mouse's battery compartment.
3. Plug the USB receiver into an available USB-A port on your computer. If your computer only has USB-C ports, use a USB-C adapter (not included) to connect the receiver.
4. On the keyboard, press the 2.4G button (often indicated by a wireless icon) once. The corresponding indicator light on the keyboard will turn green.
5. On the mouse, click the Mode button until the green indicator light is on. This confirms the 2.4G connection.



Image: Visual guide for 2.4G wireless connection, showing the USB receiver, power switches, and mode selection buttons on the keyboard and mouse.

Bluetooth Connection (BT1/BT2)

1. Turn on the power switch for both the keyboard and the mouse.
2. For the keyboard, press the BT1 or BT2 button once to select the desired Bluetooth channel. The corresponding indicator light will illuminate.
3. To enter pairing mode, press and hold the selected BT1 or BT2 button again for approximately 3-5 seconds until the indicator light starts flashing rapidly.
4. For the mouse, click the Mode button until the blue indicator light (BT1 or BT2) is on. Then, long press the Mode button again until the blue light starts flashing, indicating pairing mode.
5. On your device (computer, smartphone, tablet), open the Bluetooth settings.
6. Search for new devices. For the keyboard, look for "Meetion_KB_BT1" or "Meetion_KB_BT2". For the mouse, look for "Meetion_MS_BT1" or "Meetion_MS_BT2".
7. Select the device name to complete the connection. Once connected, the indicator light will stop flashing and remain solid.



Image: A step-by-step visual guide demonstrating how to establish a Bluetooth connection for the MEETION Director-C-2 keyboard and mouse with a tablet.

Video: This official video from MEETION Inc. provides a detailed demonstration of the connection process for the Director-C-2 Ergonomic Keyboard and Mouse, covering both 2.4G USB and Bluetooth pairing.

OPERATING INSTRUCTIONS

Indicator Lights

The keyboard and mouse feature indicator lights to provide status information:

• Keyboard Indicators:

- Red (flashing): Low battery, needs recharging.
- Red (solid): Charging in progress.
- Green (solid): Fully charged.
- Green (solid): 2.4G connection active.
- Blue (solid): Bluetooth 1 connection active.
- Blue (solid): Bluetooth 2 connection active.
- Blue (flashing): Bluetooth pairing mode.

• Mouse Indicators:

- Red (flashing): Low battery, needs recharging.
- Red (solid): Charging in progress.
- Red (off): Fully charged.
- Green (solid): 2.4G connection active.
- Blue (solid): Bluetooth 1 connection active.
- Blue (solid): Bluetooth 2 connection active.
- Blue (flashing): Bluetooth pairing mode.



Image: A detailed view of the keyboard's indicator lights, showing their positions and corresponding functions for charging, 2.4G, Bluetooth 1, and Bluetooth 2 connections.

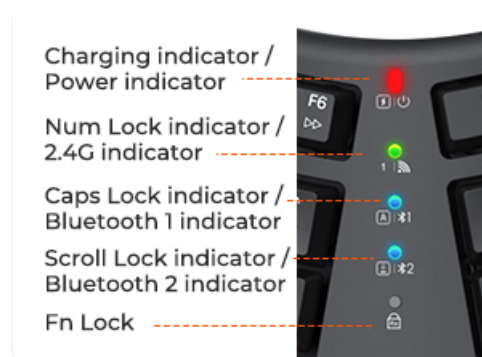


Image: A close-up of the vertical mouse's indicator lights, illustrating the charging, 2.4G, Bluetooth 1, and Bluetooth 2 status indicators.

Charging

Both the keyboard and mouse are equipped with rechargeable batteries. Use the provided USB-C cable to charge them.

- Connect the USB-C cable to the charging port on the keyboard/mouse and the other end to a USB power source (e.g., computer USB port, wall adapter).
- The indicator light will show charging status as described above.
- Charging time may vary. Ensure the device is fully charged before first use for optimal battery life.

USB-C Rechargeable Keyboard and Mouse

Long battery life, supports charging while in use



Image: The keyboard and mouse connected via USB-C cables for charging, highlighting their rechargeable convenience.



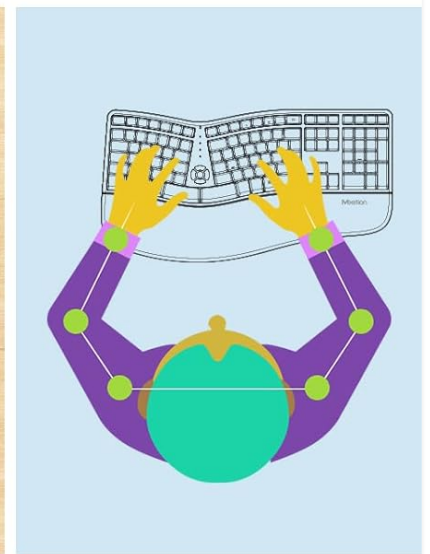
Image: Visual representation of the charging process for both the keyboard and mouse, showing the USB-C connection and the red charging indicator lights.

Ergonomic Features and Adjustments

- **Ergonomic Curved Keyboard:** The keyboard features a traditional ergonomic design with a curved layout and integrated palm rest to promote a natural typing posture. Users may require an adjustment period.
- **Adjustable Stand Angle:** The keyboard includes adjustable stands to allow users to set a preferred tilt angle for optimal wrist comfort, whether seated or standing.
- **Vertical Mouse with Adjustable DPI:** The vertical mouse design encourages a natural hand position, reducing strain. It offers four adjustable DPI settings (800-1200-1600-2400) to customize cursor sensitivity. The DPI switch is located on the underside of the mouse.

Leather Padding and Split Design

Provides exceptional comfort and relaxation for the wrist and palm



- 1 Soft Synthetic Leather
- 2 High-density Support Layer
- 3 Memory Foam Comfortable Layer

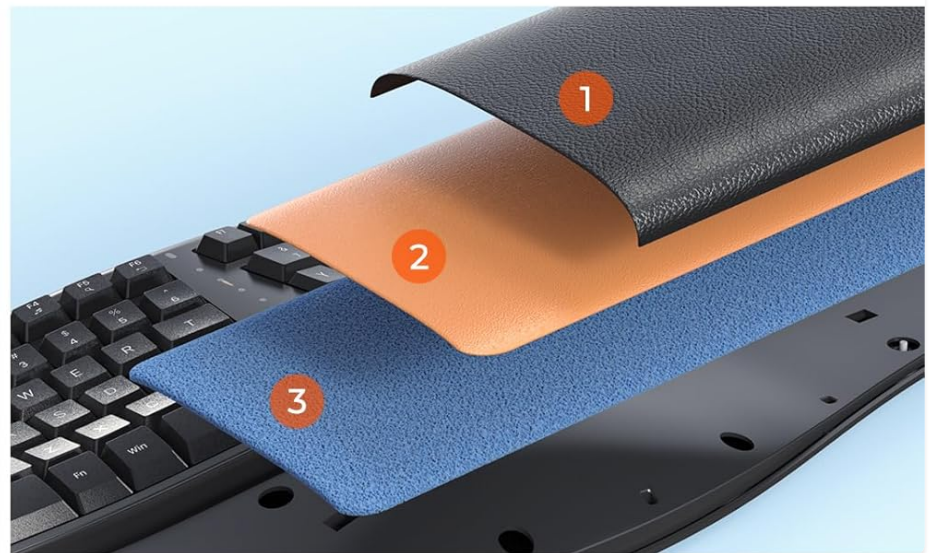


Image: An illustration detailing the multi-layered construction of the keyboard's palm rest, including soft synthetic leather, a high-density support layer, and a comfortable memory foam layer.



Image: A cutaway view of the keyboard's palm rest, highlighting its three layers: soft synthetic leather, a high-density support layer, and a memory foam comfortable layer, designed for ergonomic support.



Adjustable Stand Angle

Maintain a natural comfortable wrist position whether seated or standing



Image: The keyboard shown with its adjustable stands deployed, illustrating how the angle can be modified to maintain a natural and

comfortable wrist position.

Ergonomic Design for Comfortable All day Use

Tilt angle design promotes natural hand placement for improved comfort



Image: A diagram illustrating the 57-degree tilt angle of the vertical mouse, designed to promote a natural hand position and reduce wrist strain for comfortable all-day use.



Image: The underside of the vertical mouse, showing the DPI switch with settings from 800 to 2400, and the ON/OFF power switch.

MAINTENANCE

Proper maintenance ensures the longevity and optimal performance of your MEETION Director-C-2 combo.

- **Cleaning:** Use a soft, dry cloth to wipe down the keyboard and mouse. For stubborn dirt, slightly dampen the cloth with water or a mild cleaning solution. Avoid harsh chemicals or abrasive materials.
- **Battery Care:** To maximize battery lifespan, avoid fully discharging the devices frequently. Recharge them when the low battery indicator appears. If storing for an extended period, charge them to about 50% and turn them off.
- **Storage:** Store the devices in a cool, dry place away from direct sunlight and extreme temperatures.

TROUBLESHOOTING

If you encounter issues with your MEETION Director-C-2, refer to the following common solutions:

Problem	Possible Cause	Solution
Device not connecting (2.4G)	USB receiver not properly inserted; device not in 2.4G mode; low battery.	Ensure receiver is fully inserted. Verify keyboard/mouse is switched to 2.4G mode (green indicator). Recharge devices.
Device not connecting (Bluetooth)	Not in pairing mode; Bluetooth off on host device; incorrect device selected.	Ensure keyboard/mouse is in Bluetooth pairing mode (flashing blue light). Turn on Bluetooth on your computer/device. Select the correct device name ("Meetion_KB_BTx" or "Meetion_MS_BTx").
Keyboard/Mouse not responding or lagging	Low battery; interference; out of range.	Recharge devices. Move closer to the USB receiver or Bluetooth host. Reduce interference from other wireless devices.
Keys not registering or mouse scroll wheel issues	Debris under keys; hardware malfunction.	Gently clean around the affected keys. If the issue persists, contact customer support.
Short battery life	Aging battery; frequent heavy use.	Ensure full charge cycles. If battery life significantly degrades, contact customer support for potential replacement options.

If the problem persists after trying these solutions, please refer to the Support section for further assistance.

SPECIFICATIONS

- **Model Number:** Director-C-2-BT
- **Brand:** MEETION
- **Connectivity Technology:** Bluetooth, 2.4G Wireless (USB-A)
- **Special Features:** Ergonomic, Full Size, Rechargeable, Split Keyboard, Wrist Rest
- **Compatible Devices:** Laptop, Personal Computer, Smartphone, Tablet (Windows/Mac/Android)
- **Item Weight:** 3.25 pounds
- **Package Dimensions:** 19.69 x 10.83 x 3.07 inches
- **Batteries:** 1 Lithium Polymer battery required (included)
- **Mouse DPI Settings:** 800-1200-1600-2400

WARRANTY AND SUPPORT

MEETION is committed to providing high-quality products and dedicated customer support. For any inquiries or issues regarding your Director-C-2 ergonomic keyboard and mouse set, please contact MEETION Inc. directly.

You can visit the official MEETION store for more information and support resources:

[Visit the MEETION Store on Amazon](#)



Image: A representative from MEETION Inc. ready to provide customer assistance, symbolizing the company's commitment to support.