

VEGA VHSD-02

VEGA Pro Volumizer Hair Dryer Brush (Model VHSD-02) User Manual

Your comprehensive guide to safe and effective hair drying and styling.

PRODUCT OVERVIEW

The VEGA Pro Volumizer Hair Dryer Brush (Model VHSD-02) is a versatile 3-in-1 hot air brush designed to dry, brush, and volumize hair in a single step. It features a powerful 1000-1200W motor, a 360° Advanced Airflow Vent Design for efficient drying, and a Tourmaline Ceramic Coated styling surface for even heat distribution and frizz-free results. The device includes multiple heat and speed settings to suit various hair types and styling needs.

DRY & STYLE IN ONE STEP



Powerful 1200W
for effective hair
drying & styling



Anti-Scald Technology
for scalp protection



3 Heat/2 Speed Settings
for all hair types



Tourmaline Ceramic Barrel
for even heat distribution

Image: The VEGA Pro Volumizer Hair Dryer Brush, showcasing its design and functionality.

VEGA PRO VOLUMIZER HAIR DRYER BRUSH



Image: Diagram of the VEGA Pro Volumizer Hair Dryer Brush with key components labeled, including Cool Tip, 360° Airflow design, Tourmaline ceramic barrel, Anti-Scald technology, Ball Tips nylon bristles, and Comfortable handle.

SAFETY INFORMATION

To ensure safe operation and prevent injury or damage to the appliance, please adhere to the following safety guidelines:

- Do not use the hair dryer brush while bathing or in wet environments.
- Do not place or store the hair dryer brush where it can fall or be pulled into a tub or sink.
- Do not drop or immerse the hair dryer brush into water or any other liquid.
- If the hair dryer brush falls into water or other liquid, unplug it immediately before attempting to retrieve it.

OPERATING INSTRUCTIONS

Getting Started

Before first use, ensure the appliance is clean and free from any packaging materials. Plug the device into a suitable power outlet.

Heat and Speed Settings

The hair dryer brush is equipped with a rotary knob to select between 3 heat and 2 speed settings:

- **Setting III:** Hot Air & High Speed (for voluminous hair)
- **Setting II:** Warm Air & Medium Speed (for quick styling)
- **Setting I:** Normal Air & High Speed (for instant drying)

Your **TIME-SAVER** for
effortless drying and salon-
worthy hairstyling in **ONE GO**
3 Heat/2 Speed Settings



Image: The rotary knob on the handle, illustrating the three heat and two speed settings for customized styling.

Drying and Styling Steps

1. **Step 1:** Towel dry your hair to remove excess water.
2. **Step 2:** Divide your hair into manageable sections, suitable for your hair type.
3. **Step 3:** Switch on the VEGA Pro Volumizer Hair Dryer Brush to your preferred setting using the rotary knob. Use Setting III for thick hair, or Setting I or II for thinner hair.
4. **Step 4:** Place the brush a few inches away from the scalp and slowly glide it downward towards the ends, using inward and outward strokes.
5. **Step 5:** Repeat this process until your hair is dry and styled to your desired result. Continue on the

remaining sections of hair.

This appliance is suitable for both damp and dry hair.



Image: Visual guide demonstrating the step-by-step process of using the hair dryer brush for drying and styling.

Key Features for Optimal Styling

- **360° Advanced Airflow Vent Design:** This unique system ensures even airflow from all sides, significantly reducing drying and styling time while providing uniform results.
- **Tourmaline Ceramic-Coated Styling Surface:** Provides even heat distribution, protecting hair from hot spots and leaving it shiny, smooth, and frizz-free.
- **Flexible Tangle-Free Bristles with Smooth Ball Tips:** Designed to glide smoothly through hair, detangling it gently while massaging the scalp for added comfort and minimal hair breakage.
- **Anti-Scald Technology:** Built-in protective technology ensures scalp protection and safe use, even during extended styling sessions.
- **360° Swivel Power Cord:** Prevents wire tangling, making the brush easy to maneuver during use.

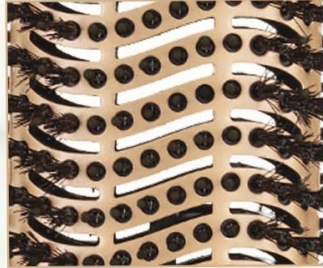
360° ADVANCED AIRFLOW VENT DESIGN

Blow Dry Hair in Half the Time



Image: Close-up of the brush head highlighting the 360° airflow vent design for efficient drying.

Elevate your hair style with the **VEGA PRO VOLUMIZER HAIR DRYER BRUSH**



**Tourmaline
Ceramic Barrel**
even heat distribution
and frizz-free results



**Ball Tips
Nylon Bristles**
gentle on scalp & hair



**Suitable for
damp & dry hair**

Image: Detailed view of the Tourmaline Ceramic Barrel and Ball Tips Nylon Bristles, emphasizing their gentle action on hair and scalp.

MAINTENANCE AND CARE

Regular cleaning and proper storage will extend the life of your VEGA Pro Volumizer Hair Dryer Brush.

- Always unplug the appliance and allow it to cool completely before cleaning.
- Wipe the exterior of the brush with a soft, damp cloth. Do not use abrasive cleaners or solvents.
- Gently remove any hair tangled in the bristles using a comb or your fingers.
- Ensure the air vents are clear of dust and debris to maintain optimal airflow.
- Store the brush in a dry place, away from moisture and direct sunlight.

TROUBLESHOOTING

If you encounter any issues with your VEGA Pro Volumizer Hair Dryer Brush, refer to the following common troubleshooting steps:

- **Appliance not turning on:** Ensure the power cord is securely plugged into a working electrical outlet. Check if the power switch is in the 'ON' position.
- **No airflow or weak airflow:** Check for any obstructions in the air intake or exhaust vents. Clean any dust or hair accumulation.
- **Unusual noise or smell:** Immediately unplug the device. Do not use it if you notice grinding sounds, burning smells, or excessive smoke. Contact customer support for assistance.
- **Hair not drying or styling effectively:** Ensure you are using the correct heat and speed settings for your hair type. Make sure hair is towel-dried before use.

For issues not covered here, please contact VEGA customer support.

SPECIFICATIONS

Feature	Detail
Model Number	VHSD-02
Power Source	Corded Electric
Wattage	1000-1200 Watts
Material	Ceramic Tourmaline
Color	Blue and Gold
Item Weight	550 g
Product Dimensions (LxWxH)	37.5 x 10.5 x 7.8 cm
Country of Origin	India
Safety Compliance	BIS Certified

WHAT'S IN THE BOX

Upon opening the product packaging, you will find the following items:

- VEGA Pro Volumizer Hair Dryer Brush (Model VHSD-02)
- User Manual (this document)
- Warranty Card

WARRANTY AND SUPPORT

The VEGA Pro Volumizer Hair Dryer Brush comes with a warranty. Please refer to the included Warranty Card for detailed terms and conditions, including warranty period and coverage.

For any product-related inquiries, technical assistance, or warranty claims, please contact VEGA customer support using the information provided on your Warranty Card or the official VEGA website.

PRODUCT VIDEOS

Video: An overview of the VEGA Pro Volumizer Hair Dryer Brush, demonstrating its features and ease of use.

Video: Detailed demonstration of the VEGA Pro Volumizer Hair Dryer Brush's ceramic tourmaline surface, multiple speed settings, 360-degree airflow, flexible bristles, and anti-scalding features.

Video: A user demonstrating the practical application of the VEGA Pro Volumizer Hair Dryer Brush for styling hair.