

Cisco C1300-16XTS

Cisco Catalyst 1300-16XTS Managed Switch User Manual

Model: C1300-16XTS

1. OVERVIEW

The Cisco Catalyst 1300-16XTS is a fully managed switch designed to provide reliable and secure connectivity for small business networks. This switch offers full Layer 2/3 capabilities, an intuitive web dashboard, advanced networking features, and Power over Ethernet Plus (PoE+) support.

Key features include:

- **Switch Ports:** 8 ports 10G Copper + 8x 10GE SFP+ ports + 1x GE Management Port.
- **Simplified Management:** Intuitive Cisco Business mobile app and local web interface for setup, management, and monitoring.
- **Enhanced Security:** IP-MAC port binding and IPv6 First Hop Security for network protection.
- **Energy Efficiency:** Optimizes power usage, compliant with IEEE 802.3az Energy Efficient Ethernet.
- **Business Ready:** No subscription or licenses required, includes limited lifetime hardware warranty and complimentary 1-year technical support.



Front view of the Cisco Catalyst 1300-16XTS Managed Switch, highlighting its 8 10G copper ports and 8 10GE SFP+ ports, along with a GE management port and status indicators.

2. PACKAGE CONTENTS

Verify that your package contains the following items:

- Cisco Catalyst 1300-16XTS Managed Switch unit
- Power cord or adapter
- USB Type-C cable
- Mounting hardware

If any items are missing or damaged, please contact your vendor or Cisco support.

Your browser does not support the video tag.

This video provides a step-by-step guide on unboxing the Cisco Catalyst 1300 series switch and identifying all included components, such as the switch unit, power adapter, USB Type-C cable, and mounting hardware.

3. SETUP

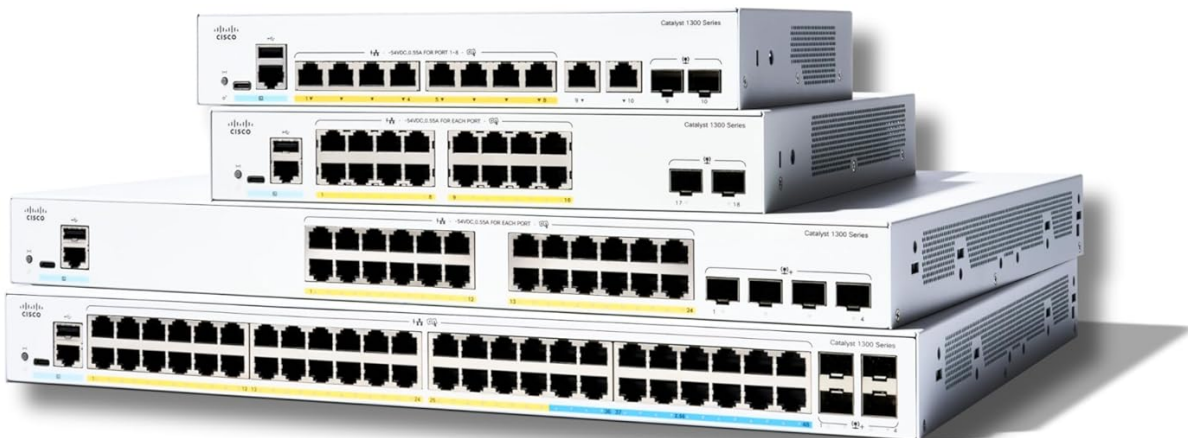
Follow these steps to set up your Cisco Catalyst 1300-16XTS Managed Switch:

1. **Connect Power:** Connect the power adapter to the switch's power input and then plug the power cord into an electrical outlet. Ensure the power LED on the switch illuminates.
2. **Connect to Router/Network:** Use an Ethernet cable to connect one of the switch's 10G copper ports (or

SFP+ ports with appropriate transceivers) to your router or existing network infrastructure.

3. **Connect Devices:** Connect your network devices (e.g., computers, servers, wireless access points) to the remaining available ports on the switch.
4. **Initial Configuration (Mobile App):**
 - Download the Cisco Business mobile app from your device's app store.
 - Launch the app and follow the on-screen instructions to create your site and add your switch.
 - The app will guide you through basic configuration, including setting up site credentials and adding wired/wireless devices.
5. **Initial Configuration (Web UI):** Alternatively, you can access the switch's web-based user interface (Web UI) by connecting a computer directly to the switch and navigating to its default IP address (refer to the Quick Start Guide for details).

Cisco Catalyst 1300 Series Managed Switches



- 8, 16, 24 and 48 Gigabit/ Multi-Gigabit port options, 1G or 10G fiber uplinks
- PoE+ support upto 740W
- Mobile App and Cisco Business Dashboard support
- Advanced threat protection with IPv6 first hop security
- No subscription or licenses



A detailed view of the Cisco Catalyst 1300-16XTS switch's connectivity options, showing the arrangement of its 10G copper ports, 10GE SFP+ ports, and the GE management port for network connections.

4. OPERATING INSTRUCTIONS

Once the switch is powered on and connected, it will begin forwarding network traffic. For advanced configuration and monitoring, use the following tools:

- **Cisco Business Mobile App:** Provides real-time monitoring of device status, network activity, and connected clients. It also allows for basic actions like rebooting devices and upgrading firmware.
- **Web User Interface (Web UI):** Offers comprehensive configuration options for all Layer 2/3 features, including

VLANs, QoS, security settings, and port management.

- **Cisco Business Dashboard:** For managing multiple Cisco Business devices across different sites, the Dashboard provides a centralized platform for monitoring, configuration, and troubleshooting.

Refer to the detailed documentation available via the QR code on the product packaging or the Cisco support website for in-depth configuration guides.

5. MAINTENANCE

To ensure optimal performance and longevity of your Cisco Catalyst 1300-16XTS switch, consider the following maintenance practices:

- **Firmware Updates:** Regularly check for and apply the latest firmware updates to benefit from new features, performance improvements, and security patches.
- **Environmental Conditions:** Ensure the switch is operated within its specified temperature and humidity ranges. Avoid placing it in direct sunlight or near heat sources.
- **Physical Inspection:** Periodically inspect the switch for any physical damage, loose cables, or excessive dust accumulation. Clean vents and ports as needed to maintain proper airflow.
- **Backup Configuration:** Regularly back up your switch configuration to prevent data loss in case of unexpected issues.

6. TROUBLESHOOTING

If you encounter issues with your switch, try these basic troubleshooting steps:

- **No Power:** Verify that the power cord is securely connected to both the switch and the electrical outlet. Check the power adapter and outlet for functionality.
- **No Network Connectivity:**
 - Check the Ethernet cables connecting devices to the switch and the switch to the router. Ensure they are securely plugged in and not damaged.
 - Observe the link/activity LEDs on the switch ports. A solid green or amber light typically indicates a valid connection, while a blinking light indicates activity. No light may suggest a cable or device issue.
 - Verify IP address settings on connected devices and the switch.
- **Slow Performance:**
 - Check for excessive network traffic or loops using the switch's management interface.
 - Ensure all devices are connected at their optimal speed (e.g., 10G devices to 10G ports).
 - Consider updating firmware.
- **Accessing Management Interface:** If you cannot access the Web UI or mobile app, ensure your device is on the same network segment as the switch or connected directly. Verify the switch's IP address.

For more complex issues, refer to the comprehensive troubleshooting guides on the Cisco support website or contact technical support.

7. SPECIFICATIONS

Feature	Detail
Brand	Cisco

Model Number	C1300-16XTS
Number of Ports	16 (8x 10G Copper, 8x 10GE SFP+) + 1x GE Management Port
Data Transfer Rate	80 Gigabits Per Second
Switch Type	Managed Network Switch
Interface	PoE, SFP
Item Dimensions (L x W x H)	11.81"L x 10.55"W x 1.73"H
Item Weight	3.6 Kilograms
Case Material Type	Copper
UPC	889728521482

8. WARRANTY AND SUPPORT

The Cisco Catalyst 1300-16XTS Managed Switch comes with a **Limited Lifetime Hardware Warranty**, which includes return-to-factory replacement. Additionally, you receive **1-year complimentary phone support** to the Small Business Support Center.

For technical assistance, warranty claims, or to access additional resources, please visit the official Cisco support website or contact the Small Business Support Center.