

CAYNEL SJ44819

CAYNEL Compact Cold Press Juicer User Manual

Model: SJ44819

INTRODUCTION

Thank you for choosing the CAYNEL Compact Cold Press Juicer. This masticating slow juicer is designed to efficiently extract juice from fruits and vegetables, preserving nutrients and minimizing oxidation. Its compact design makes it suitable for any kitchen space. Please read this manual thoroughly before operating the appliance to ensure safe and optimal performance.



Image: The CAYNEL Compact Cold Press Juicer, highlighting its sleek design and the fresh juice it produces.

Slow Cold Pressing Higher Nutrient Retention and Low Oxidation

30% More Juice Yield



Image: Illustration demonstrating the slow cold pressing process for higher nutrient retention and low oxidation, resulting in 30% more juice yield.

IMPORTANT SAFETY INFORMATION

Always follow basic safety precautions when using electrical appliances to reduce the risk of fire, electric shock, and injury.

- Read all instructions before use.
- Do not immerse the motor base in water or other liquids.
- Ensure the appliance is properly assembled and the safety lock is engaged before operation. The juicer will not operate if parts are not correctly installed.
- Keep hands and utensils out of the feeding chute during operation to prevent injury. Use the provided pusher.
- Unplug from outlet when not in use, before assembling or disassembling parts, and before cleaning.
- Do not operate any appliance with a damaged cord or plug, or after the appliance malfunctions or has been damaged in any manner.
- This appliance is for household use only.



Easy Clean Up



Dishwasher-Safe

Image: Detail of the safety lock mechanism on the juicer's lid, designed to prevent operation if not correctly assembled.

PRODUCT COMPONENTS

Familiarize yourself with the parts of your CAYNEL Cold Press Juicer:

- Motor Base
- Feeding Chute / Lid
- Auger (Squeezing Screw)
- Filter Basket
- Juice Container (16 oz / 500ml)
- Pulp Collection Cup (500ml)
- Pusher
- Cleaning Brush

INCLUDES

The filter can be cleaned with a brush in just seconds

- ▶ Compact slow juicer
- ▶ Juice cup(500ml)
- ▶ Pulp collection cup(500ml)
- ▶ Pusher
- ▶ Brush
- ▶ Manual



Image: The complete set of the CAYNEL juicer, including the main unit, juice cup, pulp collection cup, and cleaning brush.

SETUP AND ASSEMBLY

Follow these steps to assemble your juicer before first use:

1. Place the motor base on a stable, flat surface.
2. Put the juice cup onto the motor base, aligning it correctly.
3. Insert the filter basket into the juice cup.
4. Place the auger into the filter basket, ensuring it sits firmly.
5. Press the feeding chute/lid onto the top, twisting it clockwise until it locks into place. Ensure the safety switch is engaged.
6. Position the pulp collection cup under the pulp outlet.

Easy To Assemble and Safety Protection

Feeding chute must be in locked position to operate this juicer



Press down & twist to ensure the safety switch is engaged

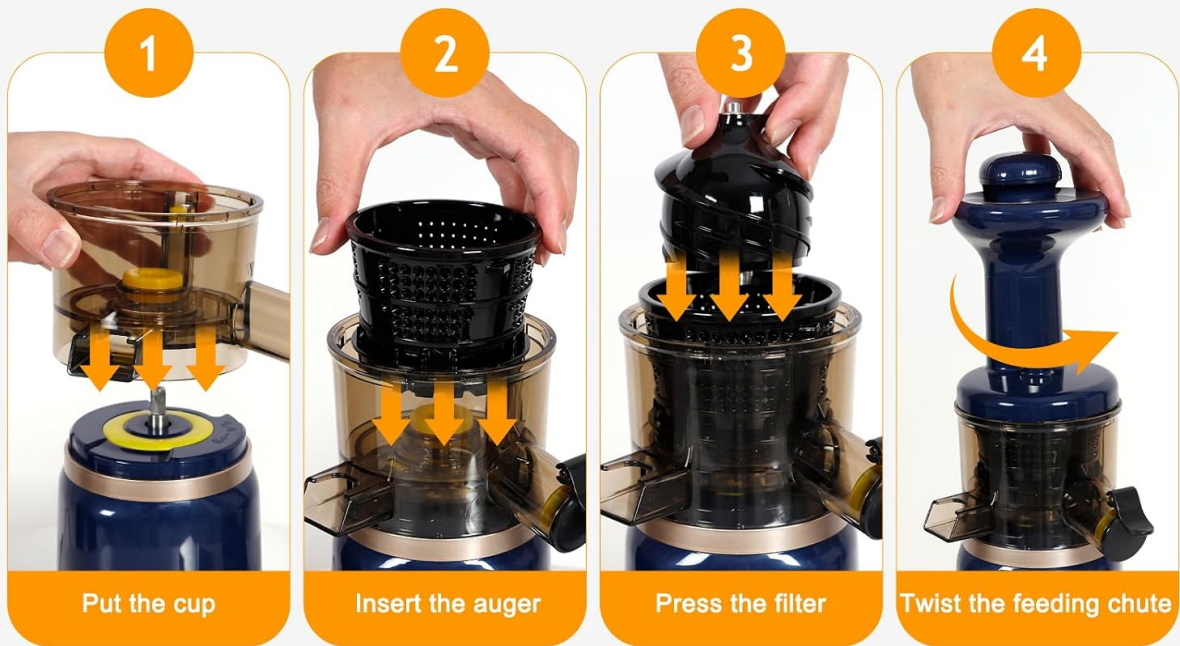


Image: Step-by-step assembly instructions for the juicer, emphasizing the safety lock engagement.

OPERATING INSTRUCTIONS

Prepare your ingredients and begin juicing:

- Ingredient Preparation:** Wash all fruits and vegetables thoroughly. Cut ingredients into smaller pieces (e.g., 1.77-inch width) to fit the feeding chute and prevent clogging. Remove hard pits, seeds, and thick peels.
- Power On:** Plug the juicer into a 120V power outlet. Turn the power switch to the 'ON' position.
- Juicing:** Slowly feed prepared ingredients into the feeding chute. Use the pusher to gently guide ingredients down. Do not force ingredients, as this can damage the motor or auger.
- Reverse Function:** If ingredients get clogged, switch the power to 'R' (Reverse) for a few seconds to clear the obstruction, then switch back to 'ON' to continue juicing.
- Finish Juicing:** Once all ingredients are processed, turn the power switch to 'O' (Off) and unplug the appliance.

130 WATT POWER

Powerful 130W cold press motor extracts pure results with less oxidation.



Image: The juicer actively extracting juice, demonstrating its 130-watt motor for efficient cold pressing.

LOW DECIBEL SLOW SPEED MOTOR

60dB



LOWER NOISE



SLOW
MASTICATING

Image: The juicer's low decibel, slow-speed motor ensures quiet operation, suitable for use without disturbance.

↶ REVERSE FUNCTION

Power switch with reverse function to avoid obstructions



ON ON

O OFF

R Reverse

Image: The power switch features an 'ON', 'OFF', and 'R' (Reverse) function to prevent obstructions during juicing.

Instructional Videos

Your browser does not support the video tag.

Video: A general overview and demonstration of the CAYNEL Compact Cold Press Juicer in operation.

Your browser does not support the video tag.

Video: A more detailed demonstration of the CAYNEL Compact Cold Masticating Slow Juicer, potentially including assembly and disassembly.

MAINTENANCE AND CLEANING

Regular cleaning ensures the longevity and hygiene of your juicer.

1. **Disassembly:** Turn off and unplug the juicer. Twist the feeding chute/lid counter-clockwise to unlock and remove it. Remove the auger, filter basket, and juice cup from the motor base.
2. **Rinse Immediately:** Rinse all removable parts under running water immediately after use to prevent pulp from drying and sticking.
3. **Cleaning Brush:** Use the included cleaning brush to remove any stubborn pulp from the filter basket and other components.
4. **Dishwasher Safe:** The removable parts (juice cup, filter basket, auger, feeding chute, pulp cup, pusher) are top-shelf dishwasher safe. The motor base and power cord are NOT dishwasher safe.
5. **Motor Base:** Wipe the motor base with a damp cloth. Never immerse the motor base in water.
6. **Drying and Storage:** Ensure all parts are completely dry before reassembling or storing the juicer. Store in a clean, dry place.

Easy to Disassemble



Dishwashable



Flush Clean

Image: Visual guide for easy disassembly, hand rinsing, and dishwasher-safe components for convenient cleaning.

TROUBLESHOOTING

If you encounter issues with your juicer, refer to the following common problems and solutions:

Problem	Possible Cause	Solution
Juicer does not turn on.	Not plugged in; parts not assembled correctly; safety lock not engaged.	Ensure power cord is securely plugged in. Reassemble all parts, ensuring the feeding chute is locked into place and the safety switch is engaged.
Juicer stops during operation or gets clogged.	Too much food fed at once; hard ingredients causing blockage.	Switch to 'R' (Reverse) for a few seconds to clear the blockage, then switch back to 'ON'. If problem persists, turn off, unplug, disassemble, and clear the blockage manually. Feed ingredients slowly.

Problem	Possible Cause	Solution
Excessive vibration or noise.	Improper assembly; juicer not on a flat surface; foreign object inside.	Check that all parts are assembled correctly and securely. Ensure the juicer is on a stable, flat surface. Turn off, unplug, and check for any foreign objects.
Low juice yield or wet pulp.	Ingredients not suitable for juicing; filter clogged.	Ensure ingredients are fresh and suitable for slow juicing. Clean the filter thoroughly.

SPECIFICATIONS

Detailed specifications for the CAYNEL Compact Cold Press Juicer Model SJ44819:

Feature	Detail
Brand	CAYNEL
Model Name	SJ44819
Product Dimensions	5.12"D x 5.12"W x 14.37"H
Item Weight	3.3 Pounds
Material	Plastic (Body), Stainless Steel (Blade)
Maximum Power	150 Watts
Voltage	120V
Special Feature	Auto Cleaning, Low Speed Masticating (46 RPM)
Capacity	16 ounces (Juice Container)
Care Instructions	Hand Wash Only (Motor Base), Top-shelf Dishwasher Safe (Removable Parts)



Image: The compact dimensions of the juicer, illustrating its small footprint for convenient use and storage.

WARRANTY AND SUPPORT

For warranty information or technical support, please contact the manufacturer or the seller directly. Keep your purchase receipt as proof of purchase.

Manufacturer: CAYNEL

Seller: MyCAYNEL

Refer to the product packaging or the seller's contact information for specific details regarding warranty periods and customer service.