

## EasyKeys 8708A

# EasyKeys Mac Tools 8708A Toolbox Replacement Key User Manual

Model: 8708A

## INTRODUCTION

This manual provides essential information for the proper identification, use, and care of your EasyKeys Mac Tools 8708A toolbox replacement key. This key is specifically designed for Mac Tools toolboxes requiring the 8708A code, cut on a K752 key blank. Please read these instructions carefully to ensure correct usage and compatibility.

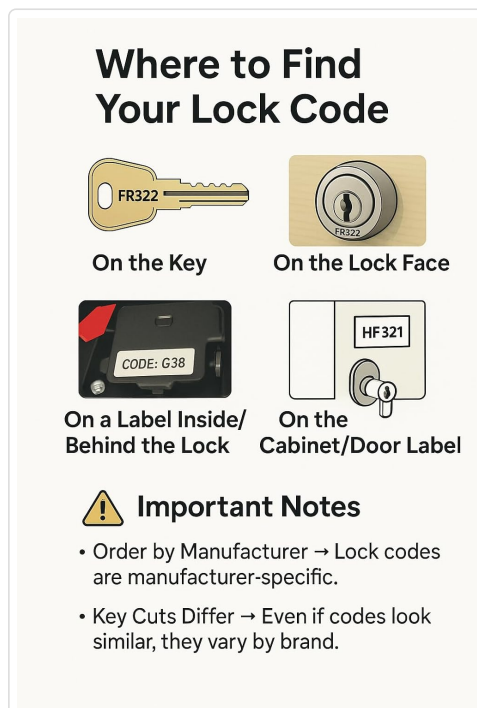


Image: The EasyKeys Mac Tools 8708A replacement key, featuring a standard key design with a flat head and serrated blade, made from brass.

## KEY IDENTIFICATION AND SETUP

Before using your replacement key, it is crucial to verify that the key code and manufacturer match your toolbox lock. Incorrect key codes will not operate your lock and may cause damage.

## Verifying Your Lock Code

The lock code for your toolbox can typically be found in several locations. Please refer to the image below for common code locations:



Image: A diagram illustrating four common places to locate your lock code: directly on an existing key, engraved on the lock face, printed on a label inside or behind the lock mechanism, or on a label affixed to the cabinet or door. Important notes emphasize that lock codes are manufacturer-specific and key cuts differ by brand.

- **On the Original Key:** If you have an existing key, the code is often stamped directly on the key head or blade.
- **On the Lock Face:** The code may be engraved or printed on the visible part of the lock cylinder.
- **Inside/Behind the Lock:** For some locks, the code is on a sticker or engraved on the lock body, accessible when the lock is removed or by looking inside the toolbox.
- **On a Cabinet/Door Label:** Less common, but some manufacturers place a label with the lock code on the inside of the toolbox door or cabinet.

Ensure the code you find matches "8708A" and that your toolbox is from Mac Tools or a compatible manufacturer such as Proto. This key is cut on a K752 key blank.

## OPERATING INSTRUCTIONS

---

Using your EasyKeys replacement key is straightforward once the correct code has been verified.

1. **Insert the Key:** Gently insert the key into the lock cylinder. Do not force the key if it does not slide in smoothly.
2. **Turn to Unlock/Lock:** Once fully inserted, turn the key clockwise or counter-clockwise (depending on your lock mechanism) to engage or disengage the lock.
3. **Remove the Key:** After locking or unlocking, return the key to its original insertion position (usually vertical) before gently pulling it out.

Always ensure the key is fully inserted before turning to prevent damage to both the key and the lock mechanism.

## MAINTENANCE

---

Proper care will extend the life of your replacement key and ensure reliable operation.

- **Keep Clean:** Periodically wipe the key with a soft, dry cloth to remove dirt or debris. Avoid using harsh chemicals.
- **Avoid Bending:** Do not use excessive force when turning the key, as this can bend or break it.
- **Proper Storage:** Store the key in a dry place, away from extreme temperatures and corrosive materials.
- **Lubrication (Lock):** If the lock mechanism becomes stiff, apply a small amount of graphite-based lubricant directly into the lock cylinder, not on the key itself.

The key is made from durable brass material, but proper handling is still recommended.

## TROUBLESHOOTING

---

If you encounter issues with your replacement key, consider the following:

- **Key Does Not Insert Fully:**
  - Check for obstructions in the lock cylinder (e.g., dirt, debris, broken key fragments).
  - Ensure you are using the correct key for the lock. Double-check the code.
- **Key Inserts but Does Not Turn:**
  - Verify that the key code matches your lock. Even similar codes can have different cuts.
  - The lock mechanism might be jammed or corroded. Try applying a small amount of graphite lubricant to the lock.
  - Ensure the lock is not under tension (e.g., a drawer or door pushing against the lock bolt).
- **Key Feels Loose or Wobbly:**
  - This could indicate wear on the key or the lock cylinder. If the key is new, re-verify the code.

If troubleshooting steps do not resolve the issue, please contact EasyKeys customer support for further assistance.

## SPECIFICATIONS

Feature	Detail
Brand	EasyKeys
Model Name	8708A
Compatible Manufacturers	Mac Tools, Proto
Key Blank Type	K752
Material	Brass
Lock Type	Cam
Item Dimensions (L x W x H)	0.5 x 0.5 x 1 inches
Special Features	Adjustable Fit, Custom Cut Key, Durable

## SUPPORT

For further assistance, questions, or to report issues not covered in this manual, please contact EasyKeys customer support. You can typically find contact information on the EasyKeys website or through your purchase platform.

When contacting support, please provide the following information:

- Your order number.
- The specific key code (8708A).
- A clear description of the issue you are experiencing.
- Photos of your lock face or original key, if available.

