

EasyKeys W268

EasyKeys Wesko W268 Office Furniture Replacement Key Instruction Manual

Your guide to identifying and using your replacement key.

1. PRODUCT OVERVIEW

This document provides essential information for the EasyKeys Wesko W268 office furniture replacement key. This key is designed to replace lost or damaged keys for various office furniture locks within the Wesko W001 - W799 series, specifically for code W268.

It is a genuine original equipment part, ensuring compatibility and proper function with your office furniture locking mechanisms.



Figure 1: Example of a replacement key. Note: The key shown is for illustrative purposes and may display a different code (e.g., W401) than your specific W268 key.

2. KEY IDENTIFICATION AND VERIFICATION

Before using your replacement key, it is crucial to verify that the lock code on your furniture matches the W268 code of this key. Lock codes are manufacturer-specific, and even similar-looking codes can have different key cuts.

How to Find Your Lock Code:

- **On the Original Key:** If available, the code is often stamped directly on the key.
- **On the Lock Face:** The code may be engraved or printed on the visible part of the lock cylinder.
- **On a Label Inside/Behind the Lock:** For some furniture, the code is on a sticker or label located inside a drawer, cabinet, or directly behind the lock mechanism.
- **On the Cabinet/Door Label:** Check for labels on the furniture itself, especially near the lock or hinges.

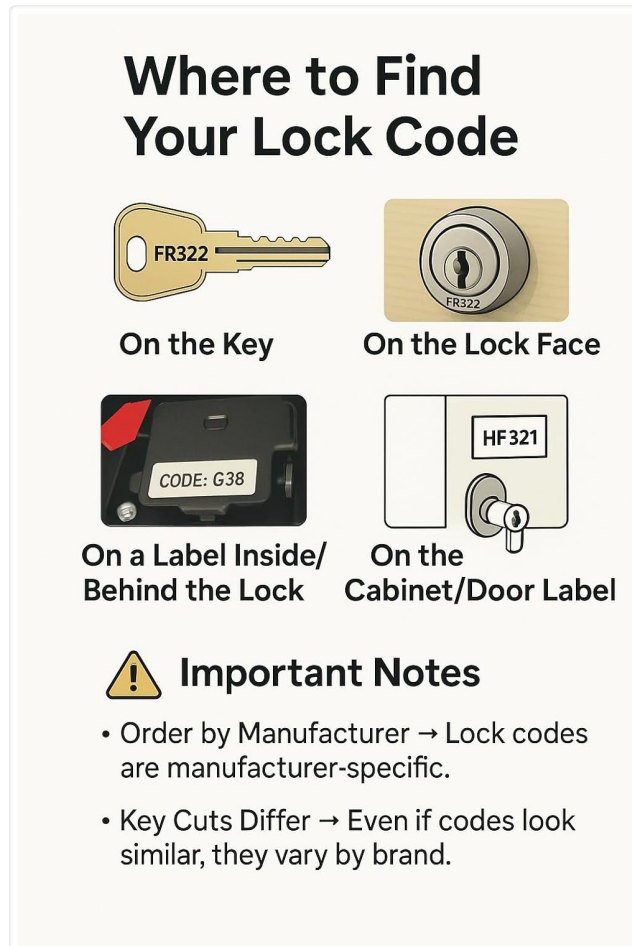


Figure 2: Visual guide to common lock code locations.

Important: Always confirm that the code found on your furniture or original key is W268 to ensure proper fit and function.

3. COMPATIBILITY

This EasyKeys Wesko W268 replacement key is compatible with office furniture locks from the Wesko Key Series W001 - W799 that specifically require the W268 code. It is cut on an IN8-W key blank.

Compatible manufacturers include, but are not limited to:

- Teknion
- Global
- Office Specialty
- Inscape
- Corry Jamestown
- Boulevard

- Pundra
- Descor
- Evolve
- ProSource
- Artopex
- OFG
- ARTOPEX / CORRY HIEBERT / GLOBAL / INSCAPE / LINCORA / OFFICE SPECIALTY / PUNDRA / SHAW WALKER / SIGNORE / SMED / TURNSTONE PAYBACK / WESKO (STOCKED OEM / GCODE / CODES ONLINE)

Note: Always verify your specific lock code and manufacturer against this list to ensure compatibility.

4. USAGE INSTRUCTIONS

Using your EasyKeys Wesko W268 replacement key is straightforward:

- 1. Insert the Key:** Gently insert the key into the lock cylinder of your office furniture. Do not force the key.
- 2. Turn to Unlock/Lock:** Once fully inserted, turn the key clockwise or counter-clockwise (depending on the lock mechanism) to engage or disengage the lock.
- 3. Remove the Key:** After locking or unlocking, return the key to its original insertion position before removing it.

If the key does not turn smoothly or feels stuck, do not force it. Re-verify the lock code and ensure the key is fully inserted and aligned correctly.

5. SPECIFICATIONS

Attribute	Detail
Brand	EasyKeys
Model Name	W268
Manufacturer	Wesko
Lock Type	Cam Lock
Material	Brass
Item Dimensions (L x W x H)	0.5 x 0.5 x 1 inches
Item Weight	4 ounces
Included Components	1 Key
Special Features	Adjustable Fit, Durable, Genuine Original Equipment Part

6. MAINTENANCE AND CARE

To ensure the longevity and smooth operation of your replacement key and lock:

- Keep the key clean and free from dirt or debris.
- Avoid bending or applying excessive force to the key.
- If the lock mechanism becomes stiff, a small amount of graphite lubricant can be applied to the key or directly into the keyway. Avoid oil-based lubricants as they can attract dust.
- Store the key in a safe place to prevent loss.

7. TROUBLESHOOTING

- **Key does not insert fully:**

Check for obstructions in the keyway. Ensure the key is oriented correctly. Do not force it.

- **Key inserts but does not turn:**

Double-check that the lock code on your furniture matches W268. The key might be for a different lock. The lock mechanism might be jammed or damaged. Try applying a graphite lubricant.

- **Key turns but lock does not engage/disengage:**

This indicates an issue with the internal lock mechanism, not the key itself. Professional repair or replacement of the lock may be necessary.

8. SUPPORT AND WARRANTY

For further assistance or inquiries regarding your EasyKeys Wesko W268 replacement key, please contact EasyKeys Inc. USA, the seller of this product. As a genuine original equipment part, this key is manufactured to high standards.

Specific warranty details are typically provided at the point of purchase or can be obtained directly from EasyKeys. Please retain your purchase receipt for any warranty claims.

You can visit the EasyKeys Store on Amazon for more information:[EasyKeys Store](#)