

Baseus 850060076763

Baseus 100W 5A USB-C Fast Charging Cable Instruction Manual

Model: 850060076763

1. INTRODUCTION

This manual provides instructions for the Baseus 100W 5A USB-C Fast Charging Cable. This cable is designed for efficient power delivery and data transfer between compatible USB-C devices. Please read this manual thoroughly before use to ensure proper operation and longevity of the product.

2. KEY FEATURES

- **High Power Delivery:** Supports up to 100W (20V/5A) fast charging for laptops, tablets, and smartphones.
- **Digital Power Display:** Integrated display shows real-time charging wattage.
- **Enhanced Durability:** Features a double-layer anti-bend design, reinforced cable ends, and a long-lasting zinc alloy port for increased resilience.
- **Embedded E-Marker Chip:** Ensures safe and stable charging by regulating current and voltage.
- **Data Transfer:** Supports data transfer speeds up to 480 Mbps (USB 2.0 standard).
- **Wide Compatibility:** Compatible with various USB-C devices including phones, tablets, and laptops.



Image 1: Baseus 100W USB-C Cable demonstrating full speed charging.

Landscape

Digital Display

Flash Charging Visible at a Glance



Image 2: Digital display on the USB-C connector showing real-time charging wattage.

Improved Durability

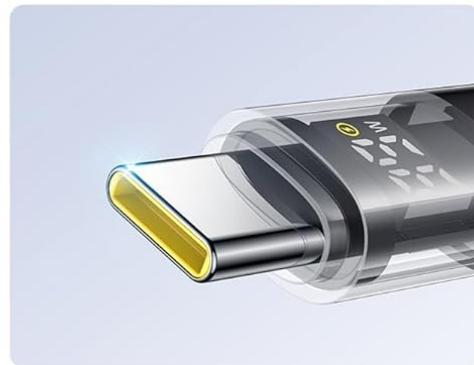
Each Part is Made of Genuine Materials



Double-Layer Anti-Bend Design Enhanced Durability



Reinforced Cable End
Bendable & unbreakable



Long-Lasting Zinc Alloy Port
Rust-proof & oxidation-resistant

Image 3: Illustration of the cable's improved durability features.

Embedded E-Marker Chip

Reliable Safe Charging

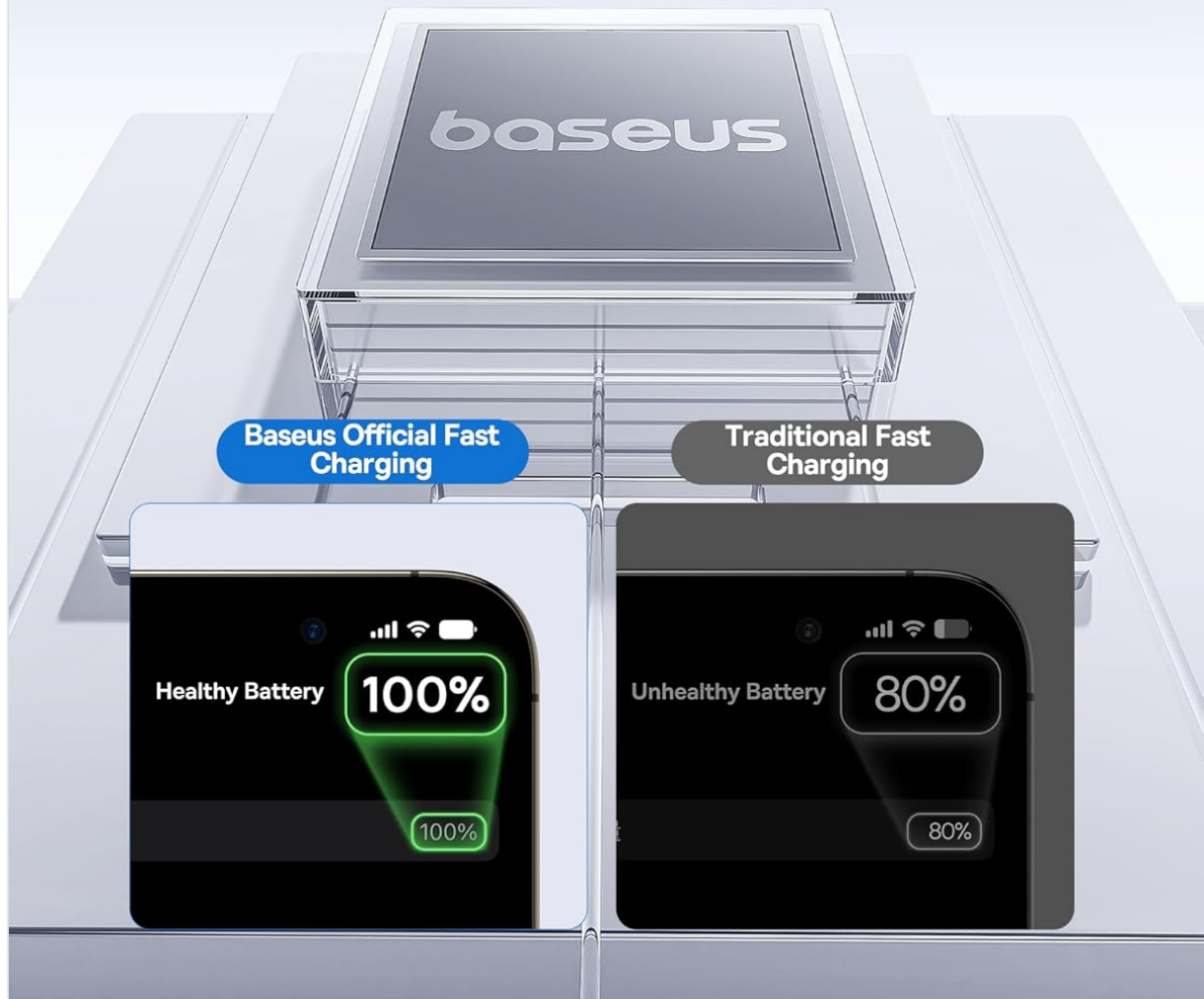


Image 4: Explanation of the embedded E-Marker chip for reliable and safe charging.

Multiple Devices, One Cable for All

For Phones



iPhone 15/16 Series



Oneplus



OPPO



Samsung



Xiaomi

For Tablets



iPad Pro



iPad Air



iPad mini



For Laptops



Mac Book Series



Lenovo

For Others



Switch



Airpods

Note: Due to the large number of applicable devices, only some mainstream models are listed. For more supported models, please refer to actual usage.

Image 5: Overview of the wide compatibility with multiple devices.

3. SETUP

The Baseus USB-C Fast Charging Cable is designed for plug-and-play functionality. No specific software or driver installation is required.

1. Identify the USB-C port on your charging adapter or host device (e.g., computer, power bank).
2. Identify the USB-C port on your target device (e.g., smartphone, tablet, laptop).
3. Insert one end of the Baseus USB-C cable into the charging adapter/host device.
4. Insert the other end of the Baseus USB-C cable into your target device.
5. Ensure both connections are firm.

4. OPERATING INSTRUCTIONS

4.1. Charging Devices

To charge your device:

1. Connect the cable as described in the "Setup" section.
2. Once connected, the digital display on the cable's connector will illuminate, showing the current charging wattage. This indicates that power is being delivered to your device.
3. For optimal fast charging, ensure both your charging adapter and device support Power Delivery (PD) and the required wattage (up to 100W).

4.2. Data Transfer

To transfer data between devices:

1. Connect the cable between two compatible USB-C devices (e.g., computer and external hard drive).
2. Your devices should recognize each other automatically.
3. Initiate data transfer through your device's operating system or file management software.
4. The cable supports data transfer speeds up to 480 Mbps (USB 2.0).

5. MAINTENANCE

Proper care will extend the life of your Baseus USB-C cable.

- **Storage:** Store the cable in a clean, dry place away from extreme temperatures. Avoid tightly coiling or kinking the cable.
- **Cleaning:** Use a soft, dry cloth to wipe the cable and connectors. Do not use liquid cleaners or abrasive materials.
- **Handling:** Always grasp the connector head when plugging or unplugging the cable. Avoid pulling directly on the cable itself to prevent damage to the internal wires and connectors.
- **Avoid Bending:** While the cable features an anti-bend design, excessive or sharp bending, especially near the connectors, should be avoided.

6. TROUBLESHOOTING

Problem	Possible Cause	Solution
Device not charging.	Loose connection. Incompatible charger/device. Damaged cable.	Ensure both ends of the cable are firmly connected. Verify that your charger and device support USB-C Power Delivery. Try a different cable or charger to isolate the issue.
Slow charging speed.	Charger does not support high wattage. Device does not support fast charging. Background apps consuming power.	Use a charger that supports 100W Power Delivery. Check your device's specifications for fast charging compatibility. Close unnecessary applications on your device.

Problem	Possible Cause	Solution
Digital display not working.	Cable not connected or device not drawing power. Cable malfunction.	Ensure the cable is properly connected and the device is actively charging. If the issue persists, the cable may be faulty.
Data transfer issues.	Loose connection. Device driver issues.	Ensure connections are secure. Check device drivers on your computer. Try connecting to a different USB-C port or device.

7. SPECIFICATIONS

Brand	Baseus
Model Number	850060076763
Connector Type	USB Type C (Male-to-Male)
Color	Gray
Wattage	Up to 100 Watts
Current	Up to 5 Amps
Data Transfer Rate	480 Megabytes Per Second (USB 2.0)
Item Weight	91 g
Package Dimensions	15.29 x 9.09 x 2.39 cm

8. WARRANTY AND SUPPORT

For warranty information and customer support, please refer to the documentation provided with your purchase or contact the seller/manufacturer directly. Keep your proof of purchase for any warranty claims.
Manufacturer: Baseus