

Sannover Omiros

Sannover Omiros 850W Wall-Mounted Electric Glass Towel Dryer User Manual

Model: Omiros | Brand: Sannover

1. INTRODUCTION

Thank you for choosing the Sannover Omiros 850W Wall-Mounted Electric Glass Towel Dryer. This appliance is designed to provide comfortable warmth and dry towels in your bathroom, enhancing your daily comfort and well-being. Please read this manual carefully before installation and use to ensure safe and efficient operation. This manual contains important information regarding the installation, operation, maintenance, and safety of your new towel dryer. Keep it in a safe place for future reference.





Image 1.1: Front view of the Sannover Omiros 850W Wall-Mounted Electric Glass Towel Dryer with its wireless remote control.

2. SAFETY INFORMATION

WARNING: Failure to follow these safety instructions could result in fire, electric shock, or personal injury.

- **Package Inspection:** Upon receipt of your order, carefully inspect the package for any damage. If the package is visibly damaged or does not conform to your order, you may refuse delivery. Document any issues with photographs before contacting customer service.
- **Professional Installation Recommended:** While local regulations may not always mandate professional installation for this type of equipment, it is strongly recommended for your safety and the safety of others to entrust this task to a qualified professional. This also applies to regular maintenance.

- **Electrical Safety:** This appliance is electrical. Ensure it is installed in accordance with all local electrical codes and regulations. Do not operate with wet hands or in excessively humid conditions without proper protection.
- **Children and Vulnerable Persons:** This appliance is not intended for use by persons (including children) with reduced physical, sensory or mental capabilities, or lack of experience and knowledge, unless they have been given supervision or instruction concerning use of the appliance by a person responsible for their safety. Children should be supervised to ensure that they do not play with the appliance.
- **Overheating:** Do not cover the towel dryer with clothing or other materials, as this can cause overheating and a fire hazard.
- **Cleaning:** Always disconnect the appliance from the power supply before cleaning. Use a soft, damp cloth; do not use abrasive cleaners or solvents.

Electrical Protection Classes

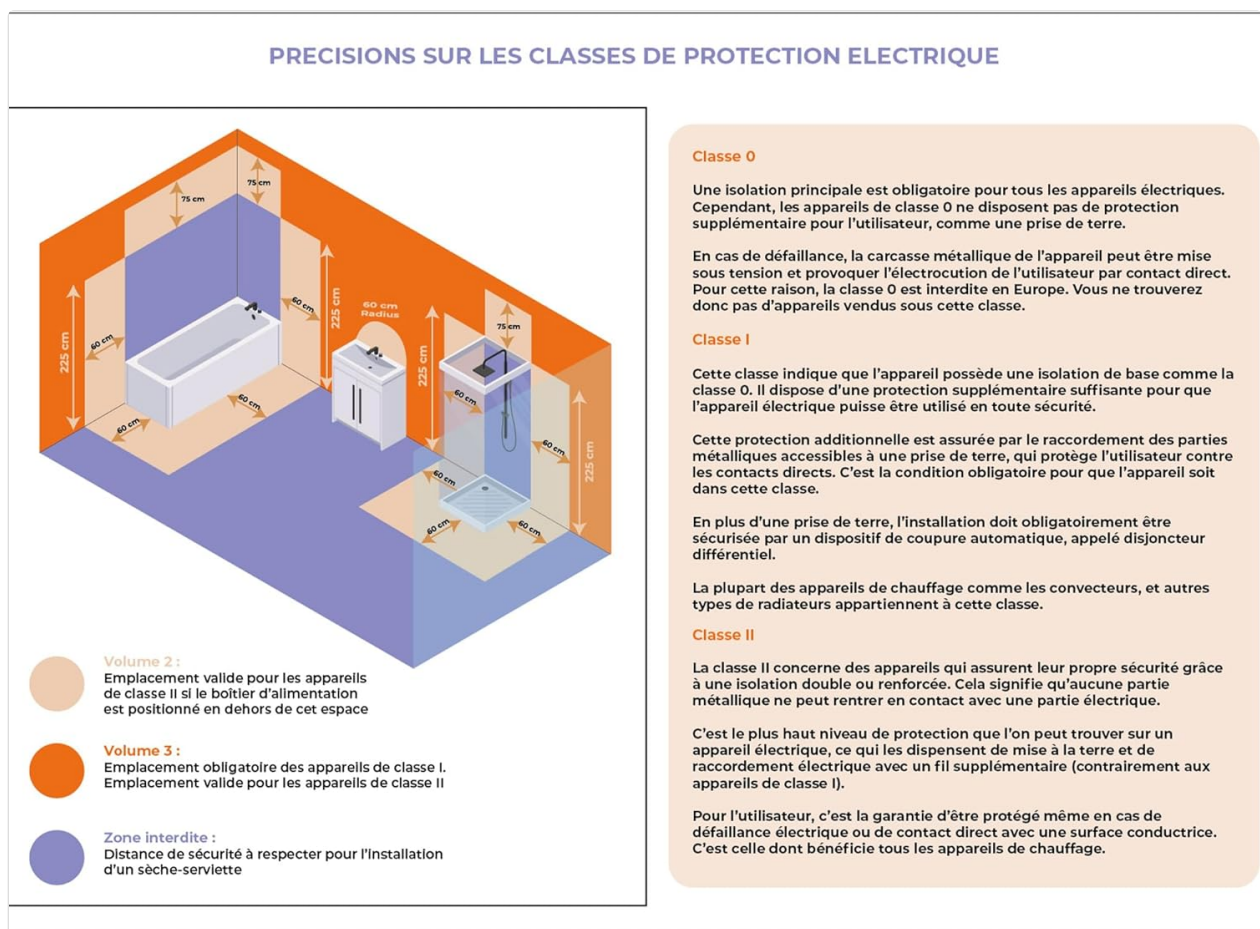


Image 2.1: Diagram showing electrical protection zones (Volume 2, Volume 3, Forbidden Zone) in a bathroom, crucial for safe installation of electrical appliances like towel dryers.

This diagram illustrates the safety zones for electrical appliance installation in a bathroom:

- **Volume 2:** Valid placement for Class II appliances if the power supply unit is located outside this space.
- **Volume 3:** Mandatory placement for Class I appliances. Valid placement for Class II appliances.
- **Forbidden Zone:** Distance to be respected for the installation of a towel dryer. This zone is typically directly above or very close to water sources (e.g., bathtub, shower).

Consult a qualified electrician to ensure your installation complies with these guidelines and local regulations.

3. PRODUCT FEATURES

The Sannover Omiros Electric Glass Towel Dryer offers the following key features:

- **Elegant Glass Design:** A sleek, modern glass panel that complements any bathroom decor.
- **Wall-Mounted:** Space-saving design for efficient use of bathroom space.
- **Integrated Timer:** Allows for programmable operation to suit your schedule and energy saving needs.
- **Wireless Remote Control:** Conveniently adjust settings from anywhere in the room.
- **Efficient Heating:** Provides rapid and consistent warmth for your towels and bathroom.

4. SPECIFICATIONS

Feature	Specification
Manufacturer	Sannover
Product Dimensions (L x W x H)	4.5 x 49 x 122 cm
Weight	15 Kilograms
Color	White
Power Type	Electric Cable
Voltage	230 Volts
Mounting Type	Wall Mount
Special Functions	Programmable, Timer, Wireless Remote Control

5. INSTALLATION AND SETUP

IMPORTANT: Installation should be performed by a qualified professional to ensure safety and compliance with local electrical standards.

5.1 Package Contents

Before beginning installation, ensure all components are present:

- Sannover Omiros Electric Glass Towel Dryer Unit
- Wall Mounting Bracket(s)
- Mounting Screws and Wall Plugs
- Wireless Remote Control
- User Manual (this document)

5.2 Mounting Location

Choose a suitable wall location in your bathroom, adhering strictly to the electrical protection zones illustrated in Image 2.1. The towel dryer must be installed away from direct water spray and within the permissible zones for electrical appliances.



Image 5.1: The Sannover Omiros towel dryer elegantly installed on a bathroom wall, demonstrating typical placement.

5.3 Installation Steps (Professional Recommended)

1. **Marking:** Use the mounting bracket as a template to mark the drilling points on the wall. Ensure the marks are level.
2. **Drilling:** Drill holes at the marked points using an appropriate drill bit for your wall type. Insert wall plugs.
3. **Mounting Brackets:** Secure the mounting brackets to the wall using the provided screws.
4. **Electrical Connection:** Connect the towel dryer's electrical cable to the main power supply. This step must be performed by a qualified electrician, ensuring proper grounding and adherence to all electrical safety standards.
5. **Attach Towel Dryer:** Carefully hang the towel dryer unit onto the mounted brackets. Ensure it is securely fastened.
6. **Final Check:** Verify all connections are secure and the unit is stable on the wall.

6. OPERATING INSTRUCTIONS

6.1 Power On/Off

To turn the towel dryer on or off, use the power button on the unit or the wireless remote control. The display on the unit will indicate its status.

6.2 Temperature Adjustment

Use the '+' and '-' buttons on the remote control to increase or decrease the desired temperature. The current temperature setting will be shown on the unit's display.

6.3 Timer Function

The integrated timer allows you to set specific operating periods. Refer to the remote control's specific instructions for setting the timer. This feature helps optimize energy consumption.

6.4 Remote Control Functions

The wireless remote control provides convenient access to all functions:

- **Power Button:** Turns the unit on/off.
- **'+' / '-' Buttons:** Adjust temperature settings.
- **Timer Button:** Activates and sets the timer function.
- **Mode Button (if applicable):** Cycles through different heating modes (e.g., comfort, eco, anti-freeze).

7. MAINTENANCE

Regular maintenance ensures the longevity and efficient operation of your Sannover Omiros towel dryer.

- **Cleaning:** Disconnect the appliance from the power supply before cleaning. Wipe the glass surface with a soft, damp cloth. Do not use abrasive cleaning agents, solvents, or harsh chemicals, as these can damage the finish.
- **Professional Check-up:** It is recommended to have your appliance regularly inspected and maintained by a qualified professional. This ensures optimal performance and safety, especially for electrical components.
- **No User-Serviceable Parts:** The towel dryer contains no user-serviceable parts. Do not attempt to open or repair the unit yourself. Contact a qualified technician for any repairs.

8. TROUBLESHOOTING

If you encounter issues with your towel dryer, refer to the following common problems and solutions:

Problem	Possible Cause	Solution
Towel dryer does not turn on.	No power supply. Remote control batteries are dead.	Check the circuit breaker. Ensure the unit is properly plugged in. Replace remote control batteries.
Unit is on but not heating.	Temperature setting is too low. Timer function is active.	Increase the temperature setting. Check and adjust the timer settings.

Problem	Possible Cause	Solution
Remote control is not responding.	Batteries are dead or incorrectly inserted. Obstruction between remote and unit.	Replace batteries, ensuring correct polarity. Remove any obstructions. Ensure you are within range.
Unusual noises or odors.	Internal fault.	Immediately turn off the unit and disconnect from power. Contact a qualified professional for inspection. Do not attempt to repair.

If the problem persists after attempting these solutions, please contact customer support or a qualified technician.

9. WARRANTY AND SUPPORT

9.1 Warranty Information

Your Sannover Omiros Electric Glass Towel Dryer benefits from:

- **Legal Conformity Warranty:** A two-year legal conformity warranty from the date of delivery of your purchase.
- **Manufacturer's Warranty:** For certain products, a manufacturer's warranty, often for two years, may apply to spare parts. This manufacturer's warranty is only valid if the installation and fault diagnosis have been carried out by a qualified professional in accordance with current standards.

Please retain your proof of purchase for warranty claims.

9.2 Customer Support

For any questions, technical assistance, or warranty claims, please contact your retailer or the Sannover customer service department. Provide your product model and purchase date when contacting support.