

Manuals.plus /

› **Blind Shade Repair** /

› Remote Control for Window Blinds and Shades. AMP, 3DayBlinds, Smith & Noble, Turnils (Turnils AMP, Black) Black Turnils AMP

Blind Shade Repair Remote Controls for Window Blinds Shades

Remote Control for Window Blinds and Shades User Manual

Model: Remote Controls for Window Blinds Shades (Black Turnils AMP)

INTRODUCTION

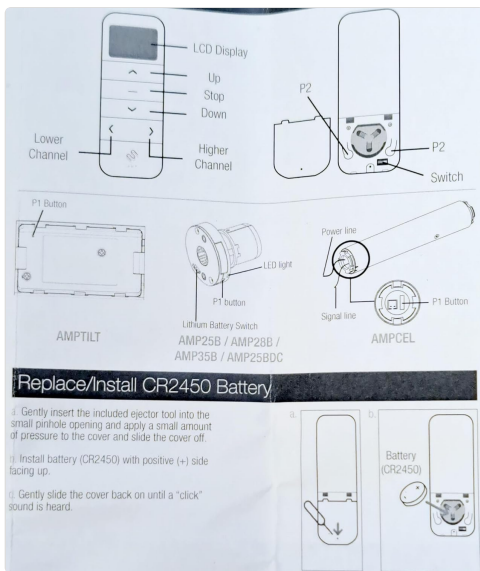
This manual provides comprehensive instructions for the installation, operation, and maintenance of your new Remote Control for Window Blinds and Shades. This remote is designed for controlling motorized shades, roller screens, honeycomb shades, roman shades, drapery, and blinds. Please read this manual thoroughly before use to ensure proper function and longevity of your device.

The remote control features a slim, stylish, and functional design with durable build and premium finishes.

PRODUCT COMPONENTS



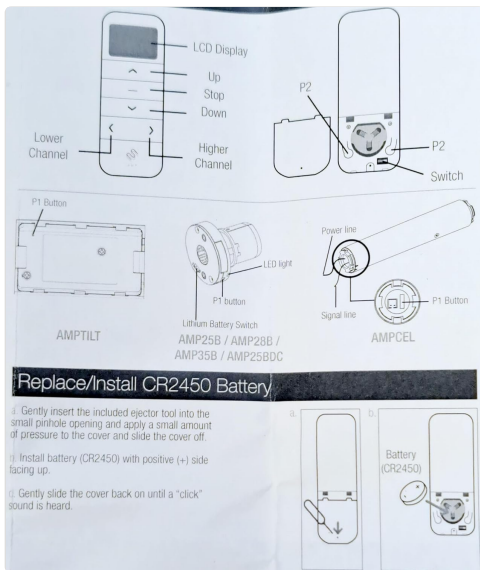
The package includes the remote control unit, a removable battery cover, a wall-mount bracket, and mounting hardware (screws and wall anchors). The remote is designed for easy handling and wall-mounting for convenient access.



This diagram illustrates the key components of the remote control: the LCD Display, Up button, Stop button, Down button, Lower Channel button, and Higher Channel button. It also shows the location of the P1 button (on the back, under the battery cover) and the P2 button (inside the battery compartment), along with the battery slot for a CR2450 battery.

SETUP AND INITIAL CONFIGURATION

1. Battery Installation



1. Gently insert the included ejector tool (or a small pointed object) into the small pinhole opening on the back of the remote and apply a small amount of pressure to slide the battery cover off.
2. Install the CR2450 battery with the positive (+) side facing up.
3. Gently slide the cover back on until a "click" sound is heard, indicating it is securely closed.

Note: A Lithium Ion battery (CR2450) is required for operation.

2. Pairing Remote Control

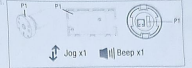
Essential Settings
The steps in factory mode must be completed to ensure proper operation. * AMPCEL and AMPFITL motors DO NOT BEEP.


1. Pair / Unpair Remote Control

a. Press "P1" button (about 2 sec) on the motor head until motor jogs x1 and beep x1.

b. In the next 10 secs, press and hold "Stop" button on the remote control until motor jogs x2 and beep x3.

* Repeat the same procedure to unpair remote control.


Action on Motor:  Jog x1 Beep x1

Action on Remote Control:  Jog x2 Beep x3

2. Change Motor Direction (if necessary)

Press "Up" or "Down" button to check if the shade moves in the desired direction. If you need to reverse the direction, press and hold (about 2 sec) "Up" and "Down" buttons simultaneously until motor jogs x1 and beep x1.

*The operation is only valid when there are no limits. If the motor has already set the upper and lower limit, then you can only switch direction by pressing "P1" button (about 10 sec) on the motor head until motor jogs x3 and beep x3.


Action on Remote Control:  Jog x1 Beep x1

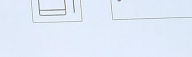
3. Setting the Upper and Lower Limits

3.1 Set Upper Limit

a. Press "Up" button to raise the shade, then press "Stop" button when it is in the desired upper limit.

b. Press and hold (about 5 sec) "Up" and "Stop" buttons simultaneously until motor jogs x2 and beep x3.

Action on Remote Control:  Jog x2 Beep x3

Action on Remote Control:  Jog x2 Beep x3

1. Press the "P1" button on the motor head for approximately 2 seconds until the motor jogs once and beeps once.
2. Within the next 10 seconds, press and hold the "Stop" button on the remote control until the motor jogs twice and beeps three times.
3. Repeat the same procedure to unpair a remote control if necessary.

3. Change Motor Direction (if necessary)


Essential Settings
The steps in factory mode must be completed to ensure proper operation. * AMPCEL and AMPFITL motors DO NOT BEEP.


1. Pair / Unpair Remote Control

a. Press "P1" button (about 2 sec) on the motor head until motor jogs x1 and beep x1.

b. In the next 10 secs, press and hold "Stop" button on the remote control until motor jogs x2 and beep x3.

* Repeat the same procedure to unpair remote control.


Action on Motor:  Jog x1 Beep x1

Action on Remote Control:  Jog x2 Beep x3

2. Change Motor Direction (if necessary)

Press "Up" or "Down" button to check if the shade moves in the desired direction. If you need to reverse the direction, press and hold (about 2 sec) "Up" and "Down" buttons simultaneously until motor jogs x1 and beep x1.

*The operation is only valid when there are no limits. If the motor has already set the upper and lower limit, then you can only switch direction by pressing "P1" button (about 10 sec) on the motor head until motor jogs x3 and beep x3.

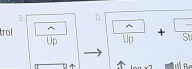
Action on Remote Control:  Jog x1 Beep x1


3. Setting the Upper and Lower Limits

3.1 Set Upper Limit

a. Press "Up" button to raise the shade, then press "Stop" button when it is in the desired upper limit.

b. Press and hold (about 5 sec) "Up" and "Stop" buttons simultaneously until motor jogs x2 and beep x3.

Action on Remote Control:  Jog x2 Beep x3

Action on Remote Control:  Jog x2 Beep x3

1. Press the "Up" or "Down" button to check if the shade moves in the desired direction.
2. If you need to reverse the direction, press and hold both the "Up" and "Down" buttons simultaneously for approximately 2 seconds until the motor jogs once and beeps once.

Note: This operation is only valid when there are no limits set. If the motor has already set the upper and lower limit, then you can only switch direction by pressing the "P1" button (about 10 sec) on the motor head until motor jogs x2 and beeps x3.

4. Setting the Upper and Lower Limits

Essential Settings
The steps in factory mode must be completed to ensure proper operation. * AMPCEL and AMPFITL motors DO NOT BEEP.

1. Pair / Unpair Remote Control

a. Press "P1" button (about 2 sec) on the motor head until motor jog x1 and beep x1.

b. In the next 10 secs, press and hold "Stop" button on the remote control until motor jog x2 and beep x3.

* Repeat the same procedure to unpair remote control.

Action on Motor
Jog x1 Beep x1

Action on Remote Control
Stop

Motor Response
Jog x2 Beep x3

2. Change Motor Direction (if necessary)

Press "Up" or "Down" button to check if the shade moves in the desired direction. If you need to reverse the direction, press "Up" and "Down" buttons simultaneously until motor jog x1 and beep x1.

*The operation is only valid when there are no limits. If the motor has already set the upper and lower limit, then you can only switch direction by pressing "P1" button (about 10 sec) on the motor head until motor jog x3 and beep x3.

Action on Remote Control
Up + Down

Motor Response
Jog x1 Beep x1

3. Setting the Upper and Lower Limits

3.1 Set Upper Limit

a. Press "Up" button to raise the shade, then press "Stop" button when it is in the desired upper limit.

b. Press and hold (about 5 sec) "Up" and "Stop" buttons simultaneously until motor jog x2 and beep x3.

Action on Remote Control
Up + Stop

Motor Response
Jog x2 Beep x3

4.1 Set Upper Limit

1. Press the "Up" button to raise the shade.
2. Then press the "Stop" button when it is in the desired upper limit position.
3. Press and hold both the "Up" and "Stop" buttons simultaneously for approximately 5 seconds until the motor jogs twice and beeps three times.

4.2 Set Lower Limit

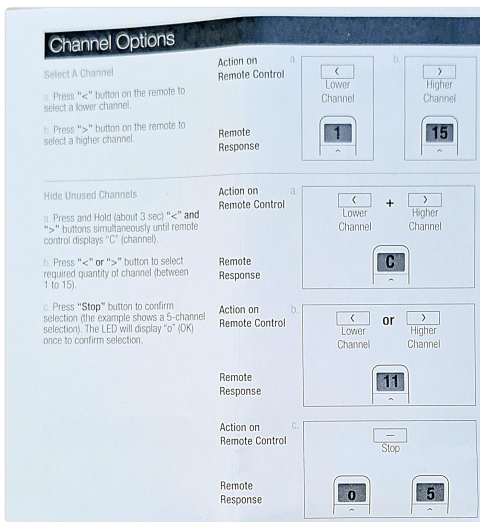
1. Press the "Down" button to lower the shade.
2. Then press the "Stop" button when it is in the desired lower limit position.
3. Press and hold both the "Down" and "Stop" buttons simultaneously for approximately 5 seconds until the motor jogs twice and beeps three times.

OPERATING INSTRUCTIONS

1. Basic Operation

- **Up Button:** Press to raise the shade.
- **Down Button:** Press to lower the shade.
- **Stop Button:** Press to stop the shade at any desired position.

2. Channel Options



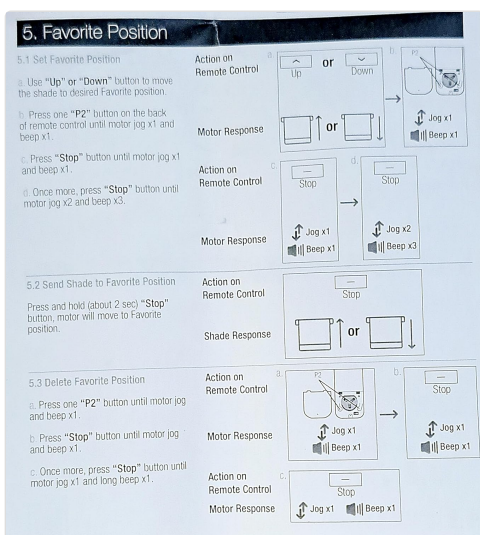
2.1 Select a Channel

1. Press the "<" (Lower Channel) button on the remote to select a lower channel.
2. Press the ">" (Higher Channel) button on the remote to select a higher channel.
3. The LCD display will show the currently selected channel (e.g., 1 to 15).

2.2 Hide Unused Channels

1. Press and hold both the "<" and ">" buttons simultaneously for about 3 seconds until the remote control displays "C" (channel).
2. Press the "<" or ">" button to select the required quantity of channels (between 1 to 15).
3. Press the "Stop" button to confirm the selection. The LED will display "o" (OK) once to confirm selection.

3. Favorite Position



3.1 Set Favorite Position

1. Use the "Up" or "Down" button to move the shade to the desired favorite position.
2. Press the "P2" button on the back of the remote control until the motor jogs once and beeps once.
3. Press the "Stop" button until the motor jogs once and beeps once.
4. Once more, press the "Stop" button until the motor jogs twice and beeps three times.

3.2 Send Shade to Favorite Position

- Press and hold the "Stop" button for approximately 2 seconds. The motor will move the shade to the set favorite position.

3.3 Delete Favorite Position

1. Press the "P2" button until the motor jogs once and beeps once.
2. Press the "Stop" button until the motor jogs once and beeps once.
3. Once more, press the "Stop" button until the motor jogs once and beeps once (long beep).

MAINTENANCE

The remote control requires minimal maintenance. Keep the device clean and dry. Avoid exposing it to extreme temperatures or direct sunlight for prolonged periods.

Battery Replacement

When the remote's display becomes dim or it becomes unresponsive, it is likely time to replace the CR2450 Lithium Ion battery. Refer to the "Battery Installation" section under "Setup and Initial Configuration" for detailed steps.

TROUBLESHOOTING

- **Remote not responding:**
 - Check battery level and replace if necessary.
 - Ensure the remote is within range of the motorized shade.
 - Re-pair the remote with the motor following the "Pairing Remote Control" instructions.
- **Shade moves in the wrong direction:**
 - Refer to the "Change Motor Direction" section to adjust the shade's movement.
- **Shade does not stop at desired limits:**
 - Re-set the upper and lower limits as described in the "Setting the Upper and Lower Limits" section.
- **Cannot select desired channel:**
 - Ensure you are using the correct channel selection buttons.
 - Check if channels are hidden and unhide them if needed, referring to "Hide Unused Channels" section.

SPECIFICATIONS

Voltage	3V (CR2450)
Radio Frequency	433.92 MHz Bi-directional
Transmitting Power	10 milliwatt
Operating Temperature	14°F to 122°F (-10°C to 50°C)
RF Modulation	FSK
Lock Function	Yes
IP Rating	IP20
Transmission Distance	up to 200m (outdoor)

Voltage	3V (CR2450)
Radio Frequency	433.92 MHz Bi-directional
Transmitting Power	10 milliwatt
Operating Temperature	14°F to 122°F (-10°C to 50°C)
RF Modulation	FSK
Lock Function	Yes
IP Rating	IP20
Transmission Distance	up to 200m (outdoor)

Additional specifications:

- **Product Dimensions:** 2 x 0.5 x 5 inches
- **Item Weight:** 5 ounces
- **Model Number:** Remote Controls for Window Blinds Shades
- **Max Number of Supported Devices:** 15
- **Compatible Devices:** Roller Screen, Cellular Shade, Roman Shade, Blind, Awning
- **Special Feature:** Digital Display, Lightweight
- **Color:** Black
- **Brand:** Blind Shade Repair
- **Manufacturer:** Rollease



The back of the remote provides regulatory information including:

- **AMP Remote PN:** 62101000
- **AMP-15C-Remote RF:** 433.92MHz
- **FCC ID:** 2AU29AMPI5REMV2
- **IC:** 25624-AMPI5REMV2
- **HVIN:** AMP-15C-Remote V2
- **PO#:** 241409
- **Made in PRC**
- **Warning:** Do not ingest battery, Chemical Burn Hazard.
- **Certifications:** CE FC

WARRANTY AND SUPPORT

Information regarding product warranty and customer support contact details is not provided in this manual. Please refer to the product packaging or the seller's website for further details on warranty coverage and how to obtain support.