



Manuals.plus /

› Reiteag /

› Reiteag Cloudy Neck Lefaya Pro 2.0 Neck Stretcher User Manual

Reiteag A1

Reiteag Cloudy Neck Lefaya Pro 2.0 Neck Stretcher User Manual

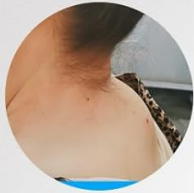
Model: A1

PRODUCT OVERVIEW

The Reiteag Cloudy Neck Lefaya Pro 2.0 is a cervical spine support device designed to help alleviate neck discomfort, correct posture, and provide targeted stretching. It utilizes an innovative 26-degree curve and integrated massage points to promote relaxation and support the natural curvature of the neck.

VON CHIROPRAKTIKERN EMPFOHLEN

bei diesen 5 Beschwerden:



1. Nackenbuckel



2. Nackenverspannungen



3. Kopfweh



4. Steifer Nacken



5. Schlechte Haltung

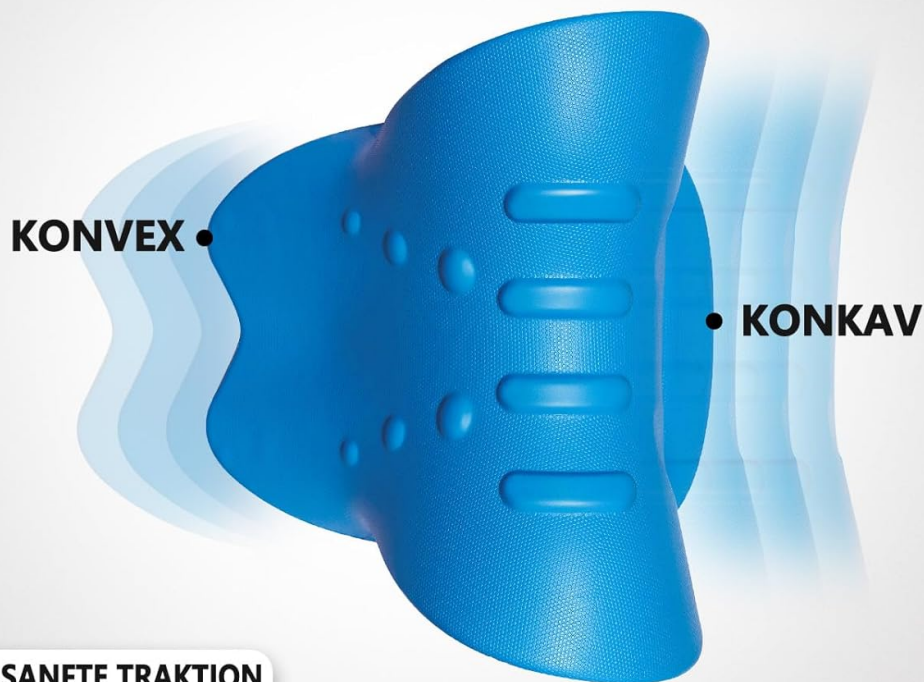


Image: The Reiteag Cloudy Neck Lefaya Pro 2.0 neck stretcher in blue.

This device is intended for individuals experiencing neck tension, stiffness, headaches related to neck issues, neck hump, and poor posture. Its design aims to provide effective and gentle traction to the cervical spine.

KONKAV-KONVEXES DESIGN

SICHERE UND ALLMÄHLICHE DEHNUNG



**KONVEX: SANFTE TRAKTION
GEEIGNET FÜR EINEN ERSTEN
ÜBERGANG**

**KONKAV: STARKE TRAKTION
DEHNEN SIE DIE HALSWIRBELSÄULE
NACH DEM ERSTEN ÜBERGANG.**

Image: Conditions for which the neck stretcher is recommended, including neck hump, tension, headaches, stiff neck, and poor posture.

The innovative 26-degree curve is engineered to provide beneficial stretching, while 6 strategically placed massage points target tense muscles to promote relaxation and improved blood circulation.

Cloudy Neck Original Pro

Professioneller, Komfortabler

Nur
10
Minuten



Image: Illustration highlighting the innovative 26-degree curve designed for effective neck stretching.

CLOUDY NECK NACKENSTRECKER



HORIZONTALE
AUSDEHNUNG



STRECKUNG DER
KRÜMMUNG



AUFRICHTEN

6 MASSAGEPUNKTE

lösengezielt verspannte
Muskeln

U-FORMIGE KRÜMMUNG

Stützen und fixieren Sie
die Position der Wirbelsäule



C-FORMIGE HOHLKONSTRUKTION

Elastizität und Halt ausgleichen

Image: Detailed diagram of the neck stretcher's features, including 6 massage points, U-shaped curvature for spinal support, and C-shaped hollow construction for balanced elasticity and support.

IMPORTANT SAFETY INFORMATION

- Consult a healthcare professional or orthopedist before using this product, especially if you have pre-existing neck conditions, injuries, disc herniation, or severe pain.
- Do not use if the product causes pain, increased discomfort, numbness, or tingling. Discontinue use immediately and consult a medical professional.
- Use only as directed. The recommended usage is approximately 10 minutes per session. Do not exceed this duration without professional advice.
- This product is not a medical device for diagnosis, treatment, or cure of any disease or medical condition.
- Keep out of reach of children and pets.
- Ensure the product is placed on a stable, flat, and firm surface during use.

SETUP AND PREPARATION

The Reiteag Cloudy Neck Lefaya Pro 2.0 is designed for immediate use and requires no assembly.

1. Choose a flat, firm, and comfortable surface for use, such as a floor or a yoga mat.
2. Place the neck stretcher on the chosen surface.

OPERATING INSTRUCTIONS

Follow these steps for proper use of your Reiteag Cloudy Neck Lefaya Pro 2.0:

1. Gently lie down on your back with your head resting on the neck stretcher.
2. Position the device so that the curve aligns with your cervical spine (neck).
3. The device features a concave and convex side. The **concave side** provides gentle traction, suitable for initial use or sensitive individuals. The **convex side** offers stronger traction for deeper stretching once you are accustomed to the device. Choose the side that feels most comfortable and effective for your needs.
4. Relax your neck, shoulders, and entire body. Allow your head to rest naturally on the device.
5. Use the neck stretcher for approximately **10 minutes per session**. Consistency is key for optimal results.
6. To remove the device, gently roll your body to the side and slowly sit up to avoid sudden movements of the neck.

BAHNBRECHENDELNNOVATION

Innovative 26°-Kurve für wohltuende Streckung



Image: A woman demonstrating the correct usage of the neck stretcher, emphasizing the recommended 10-minute daily use.

Bahnbrechende Innovation

innovative 26°-Kurve
für wohltuende Streckung

6 Massagepunkte lösen
gezielt verspannte Muskeln

Image: Explanation of the concave-convex design, detailing how the convex side provides gentle traction for initial use and the concave side offers stronger traction for advanced stretching.

CARE AND MAINTENANCE

- Clean the neck stretcher with a damp cloth and a mild soap solution.
- Do not use harsh chemicals, abrasive cleaners, or solvents, as these may damage the material.
- Allow the product to air dry completely before storing.
- Store in a cool, dry place away from direct sunlight and extreme temperatures.

TROUBLESHOOTING

- **Discomfort during use:** If you experience any pain, increased discomfort, or unusual sensations, stop using the device immediately. Re-check your positioning to ensure it is correct. If discomfort persists, consult a healthcare professional.
- **No noticeable effect:** Consistent daily use for the recommended duration is important. Results may vary among individuals. Ensure you are relaxing your neck muscles during use.
- **Product odor:** The polyurethane foam material may have a slight initial odor. This is normal. Air out the product in a well-ventilated area for a few days before use to dissipate any smell.

PRODUCT SPECIFICATIONS

Brand	Reiteag
Model Number	A1
Material	Polyurethane foam
Color	Blue
Dimensions (L x W x H)	22 x 17 x 11 Centimeters
Item Weight	290 g
Special Feature	Hypo-allergenic, Temperature-balancing

WARRANTY AND SUPPORT

For specific warranty information or customer support inquiries, please refer to the retailer from whom you purchased the Reiteag Cloudy Neck Lefaya Pro 2.0. Alternatively, you may contact Reiteag customer service directly through their official channels. Specific warranty details are not provided within this instruction manual.