

Manuals+

[Q & A](#) | [Deep Search](#) | [Upload](#)

[manuals.plus](#) /

› [KongNai](#) /

› [KongNai Child Proof Door Lever Locks Instruction Manual](#)

KongNai KN-DHL-6

KongNai Child Proof Door Lever Locks Instruction Manual

Model: KN-DHL-6

INTRODUCTION

The KongNai Child Proof Door Lever Locks are designed to enhance home safety by preventing young children and toddlers from accessing restricted areas. These locks feature a simple, adhesive-based installation that requires no drilling, preserving your doors. Their intuitive design allows for easy adult operation while maintaining robust child security.

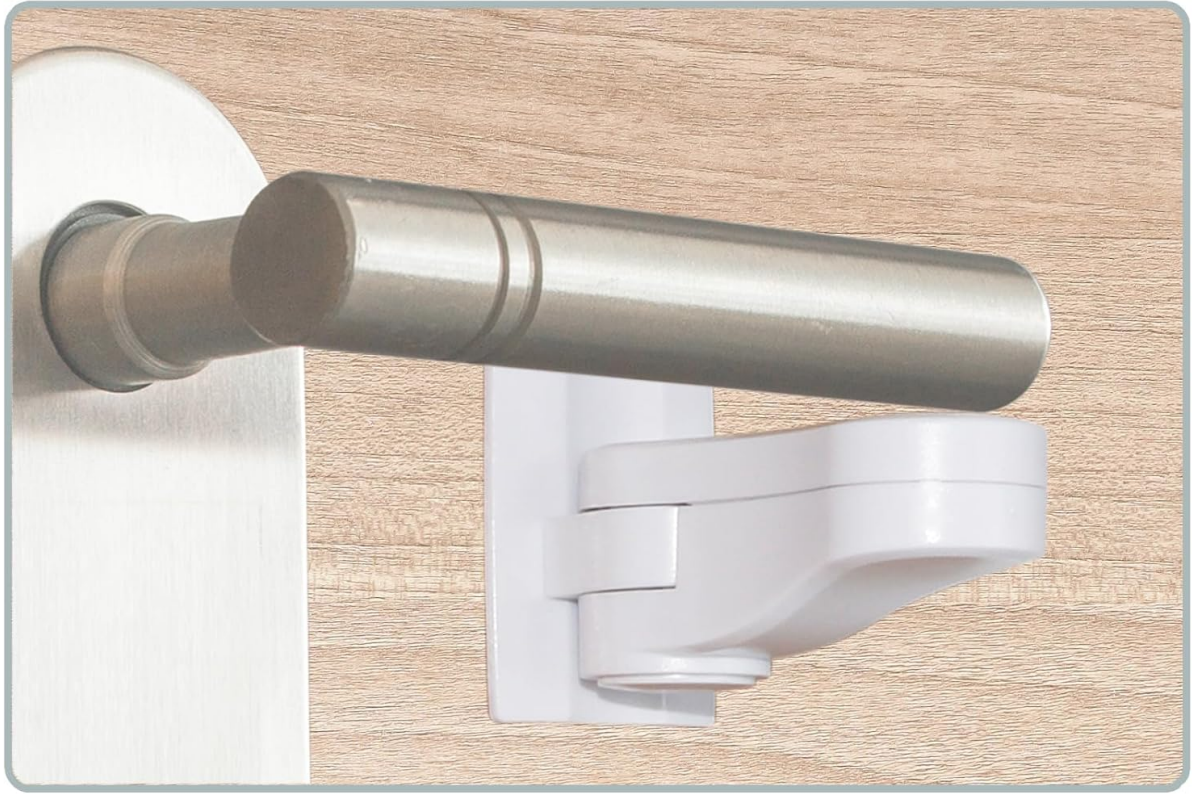


Image: KongNai Child Proof Door Lever Lock installed on a standard door handle, demonstrating its discreet placement.

SAFETY INFORMATION

Please read and understand all instructions before installation and use. Keep these instructions for future reference.

- This product is intended to deter children from opening doors. It is not a substitute for adult supervision.
- Regularly inspect the lock and adhesive for any signs of wear or damage. Replace immediately if compromised.
- Ensure the installation surface is clean and dry for optimal adhesive performance.
- Do not install on painted surfaces that may peel or chip easily.
- Keep small parts away from children to prevent choking hazards.

PACKAGE CONTENTS

Each package contains the following items:

- 6 x KongNai Child Proof Door Lever Locks (with pre-applied adhesive tapes)

SPECIFICATIONS

Feature	Detail
Model Number	KN-DHL-6
Material Type	Plastic
Number Of Items	6
Batteries Required	No
Item Weight	5.3 ounces
Package Dimensions	6.77 x 5.04 x 1.34 inches



Image: Detailed dimensions of the KongNai Child Proof Door Lever Lock, showing its compact size.

INSTALLATION GUIDE

Preparation

- Choose a smooth, clean, and dry surface on your door for installation. The adhesive works best on steel, wood, or glass.
- Clean the door surface thoroughly with a rag to remove any dust, dirt, or grease. Allow it to dry completely.

Step-by-Step Installation

1. **Step 1: Clean the surface.** Ensure the area where the lock will be placed is clean and dry.
2. **Step 2: Peel off the adhesive.** Carefully remove the protective film from the back of the lock's adhesive pad.
3. **Step 3: Position and stick.** Align the lock in the proper place on the door, ensuring the lever handle can be fully engaged by the lock when in the locked position. Press firmly for at least 30 seconds to secure the adhesive.
4. **Step 4: Adjust the lock status.** Press the button on the lock to adjust its position, allowing the door handle to move freely when unlocked or be secured when locked.



Image: Visual guide demonstrating the four simple steps for installing the door lever lock.

Installation Orientation

The lock can be installed in various orientations to best suit your door handle and usage habits. Ensure the switch button is accessible for adult operation.

Install and Use According to Your Usage Habits



1. The switch button is on the right side, and the handle lock can be turned up and down



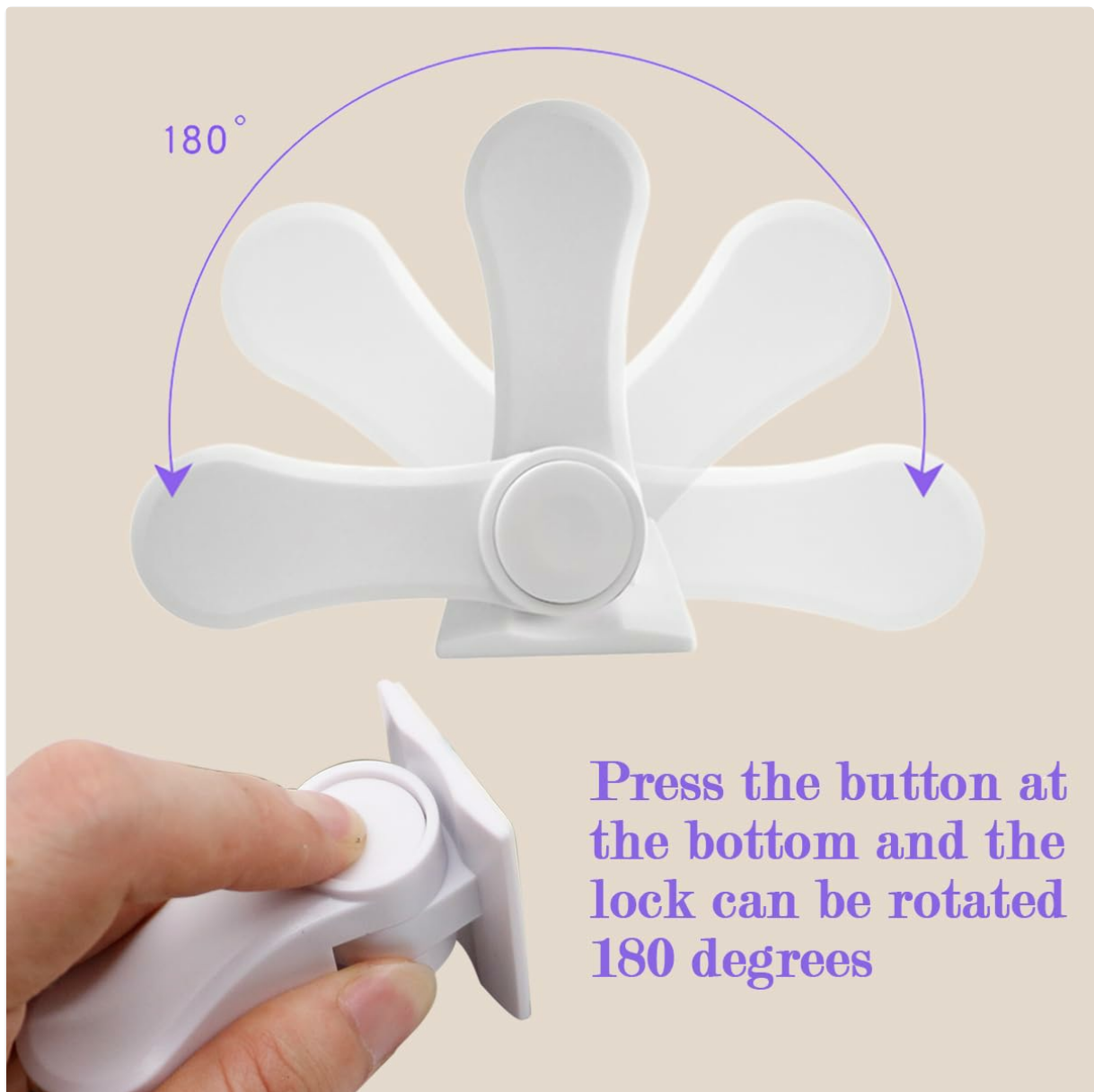
2. The switch button is at the bottom, and the handle lock can be turned left and right

Image: Examples of the lock installed with the switch button on the right side (handle turns up and down) and at the bottom (handle turns left and right).

OPERATING INSTRUCTIONS

The KongNai Child Proof Door Lever Lock is designed for convenient one-handed operation by adults.

- **To Lock:** Ensure the movable arm of the lock is positioned to block the door handle's downward movement.
- **To Unlock:** Press the button located at the base of the movable arm. While holding the button, swing the arm 180 degrees to either the left or right, moving it away from the door handle. This allows the handle to be depressed and the door to open.



Press the button at the bottom and the lock can be rotated 180 degrees

Image: Illustration showing the 180-degree rotation of the lock arm when the button is pressed.



Image: Close-up view highlighting the keyless design and the strong adhesive tapes for secure mounting.

MAINTENANCE

To ensure the longevity and effectiveness of your KongNai Child Proof Door Lever Locks, follow these simple maintenance guidelines:

- **Cleaning:** Wipe the locks periodically with a soft, damp cloth to remove dust and grime. Avoid using harsh chemicals or abrasive cleaners, as these can damage the plastic or weaken the adhesive.
- **Adhesive Check:** Regularly check the adhesive bond to the door surface. If the lock feels loose or the adhesive shows signs of peeling, consider replacing the lock or reinforcing the adhesive if possible.
- **Functionality Check:** Test the locking and unlocking mechanism regularly to ensure it operates smoothly and effectively.

TROUBLESHOOTING

If you encounter any issues with your KongNai Child Proof Door Lever Locks, refer to the table below for common problems and solutions.

Problem	Possible Cause	Solution
---------	----------------	----------

Problem	Possible Cause	Solution
Lock is not sticking to the door.	Surface was not clean or dry; adhesive is worn.	Ensure surface is thoroughly cleaned and dried before application. If adhesive is worn, replace the lock.
Child can still open the door.	Lock is not positioned correctly; child has figured out the mechanism.	Re-position the lock to fully block the handle. Ensure the button is facing upwards or in a direction difficult for the child to manipulate.
Lock mechanism is stiff or difficult to operate.	Accumulation of dirt or debris; internal wear.	Clean the lock thoroughly. If the issue persists, the lock may be worn and require replacement.



Image: The lock effectively prevents children from opening doors and accessing potentially hazardous areas.

WARRANTY AND SUPPORT

For any questions, concerns, or support regarding your KongNai Child Proof Door Lever Locks, please contact KongNai customer service. Refer to the product packaging or the official KongNai website for specific warranty details and contact information.

