

[manuals.plus](#) /

› [gearelec](#) /

› [gearelec Motorcycle Bluetooth Headset DK06 User Manual](#)

gearelec DK06

gearelec Motorcycle Bluetooth Headset DK06 User Manual

Model: DK06

Brand: gearelec

INTRODUCTION

This manual provides detailed instructions for the installation, operation, and maintenance of your gearelec DK06 Motorcycle Bluetooth Headset. Please read this manual thoroughly before using the product to ensure proper function and safety. Keep this manual for future reference.

PRODUCT OVERVIEW

The gearelec DK06 is a V5.2 Bluetooth headset designed for motorcycle helmets, featuring 2-way intercom capabilities, FM radio, IP65 waterproofing, and Hi-Fi speakers. It offers enhanced communication and audio experience for riders.



Image: The gearelec DK06 Motorcycle Bluetooth Headset, showcasing its sleek design and integrated RGB lighting.

WHAT'S IN THE BOX

Verify that all components are present in the package:

- DK06 motorcycle intercom unit
- User Manual
- 40MM HiFi Speakers
- 3M / Screw Clip mounting kit
- Soft/Hard Mic (microphone options)
- Charging cable (Type-C)

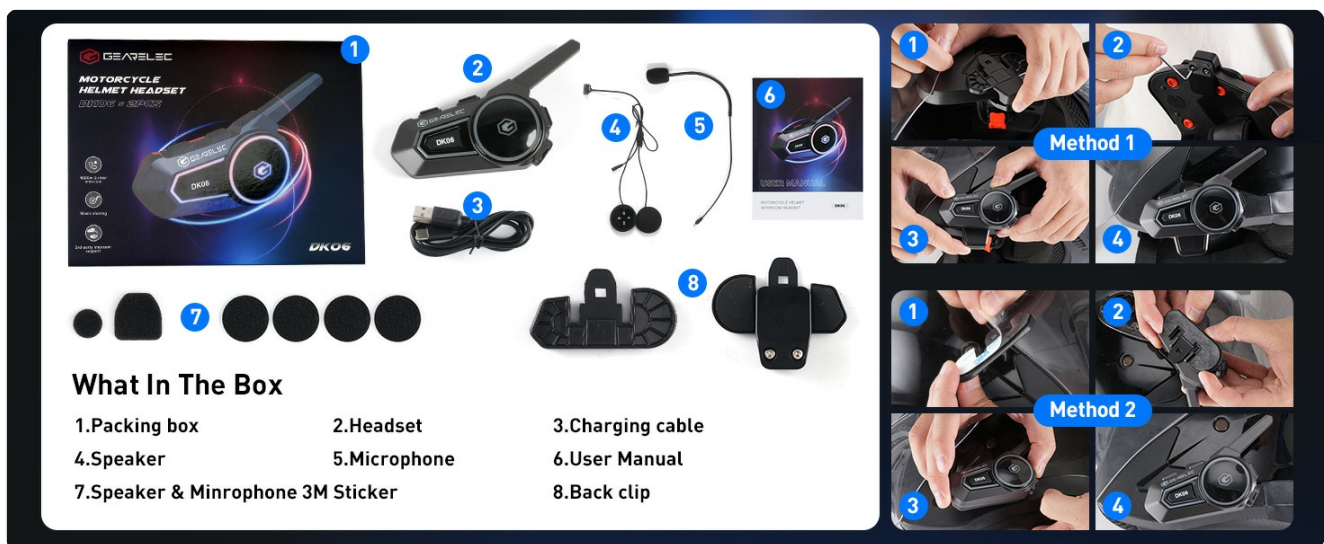


Image: An illustration showing the various components included in the DK06 package, such as the headset, speakers, microphones, mounting options, and charging cable.

SETUP AND INSTALLATION

Charging the Device

Before first use, fully charge the DK06 headset. Connect the provided Type-C charging cable to the headset and a USB power source. The charging time is approximately 1.5 hours for a full charge.



6 RGB Lighting Modes

More Fun and Safer Night Riding

Image: Visual representation of the DK06's fast charging capability and battery life, indicating 1.5 hours charging time for 400 hours standby, 40 hours music, and 35 hours intercom use.

Mounting the Headset to Your Helmet

The DK06 offers two mounting methods: 3M adhesive clip or screw clip.

1. Method 1: 3M Adhesive Clip

- Clean the helmet surface where the clip will be attached.
- Peel off the protective film from the 3M adhesive on the clip.
- Firmly press the clip onto the helmet surface and hold for 30 seconds. Allow 24 hours for the adhesive to fully cure before use.
- Slide the DK06 unit onto the mounted clip until it clicks into place.

2. Method 2: Screw Clip

- Loosen the screws on the clip and slide it onto the edge of the helmet shell.
- Position the clip securely and tighten the screws to hold it in place.
- Slide the DK06 unit onto the mounted clip until it clicks into place.

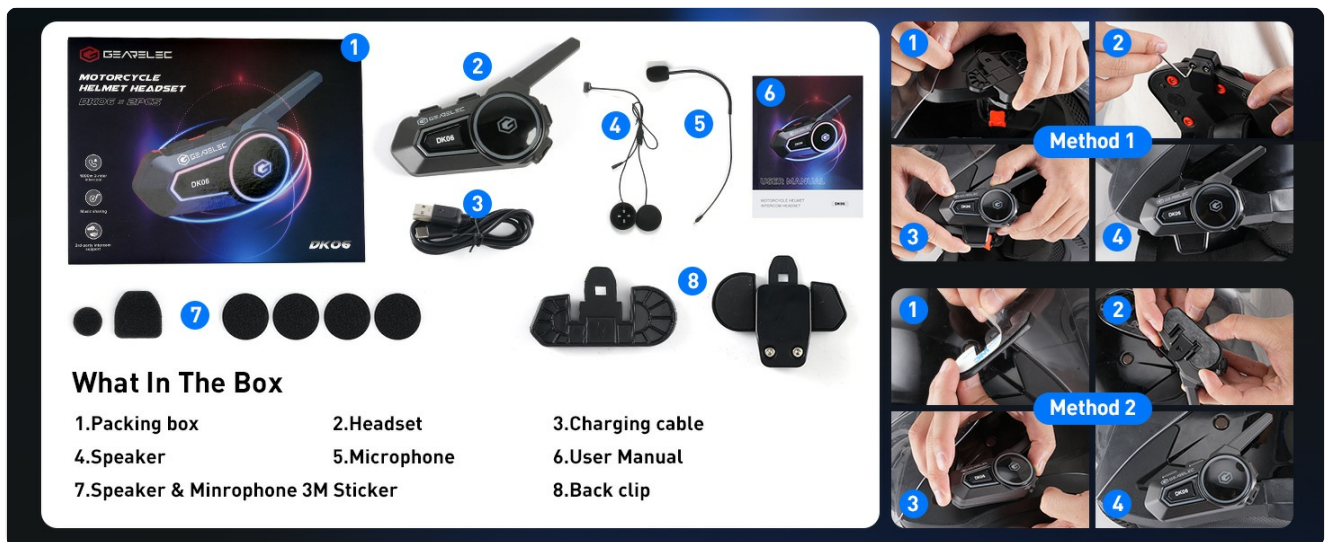


Image: Detailed visual instructions for both 3M adhesive and screw clip mounting methods on a motorcycle helmet.

Speaker and Microphone Installation

Install the speakers and microphone inside your helmet:

1. Attach the 40mm HiFi speakers to the helmet's ear pockets using the provided adhesive pads. Ensure they are positioned directly over your ears for optimal sound.
2. Choose between the soft mic (for full-face helmets) or hard mic (for open-face helmets). Attach the microphone to the helmet's chin bar or cheek pad area, ensuring it is close to your mouth.
3. Route the speaker and microphone wires neatly under the helmet's padding to the headset unit, connecting them to the appropriate ports.

Stereo & Crystal-clear Sound

40mm High-fidelity Speakers, Deliver Lively Music



Image: A diagram illustrating the optimal placement of the 40mm HiFi speakers and microphone inside a motorcycle helmet for clear audio and communication.

OPERATING INSTRUCTIONS

Power On/Off

- **Power On:** Press and hold the Power button for 3 seconds until the indicator light turns on.
- **Power Off:** Press and hold the Power button for 3 seconds until the indicator light turns off.

Bluetooth Pairing with Mobile Device

1. Ensure the DK06 is powered off.
2. Press and hold the Power button for approximately 5 seconds until the indicator light flashes red and blue alternately, indicating pairing mode.
3. On your mobile device, enable Bluetooth and search for "DK06".
4. Select "DK06" from the list of available devices to connect. A voice prompt will confirm successful pairing.



Image: An illustration highlighting the quick pairing process of the DK06 headset, showing a Bluetooth 5.2 chip and a 5-second pairing time.

Intercom Function (2-Way)

The DK06 supports 2-way intercom communication up to 1000 meters.

1. Ensure both DK06 units are powered on and not connected to other Bluetooth devices.
2. On one unit, press and hold the Intercom button until the indicator light flashes rapidly.
3. On the second unit, press the Intercom button once to search for the first unit.
4. Once connected, the indicator lights will change, and you can begin communicating.

Music Playback and Controls

- **Play/Pause:** Press the Multi-function button once.
- **Next Track:** Press the Volume Up button once.
- **Previous Track:** Press the Volume Down button once.
- **Volume Up:** Press and hold the Volume Up button.
- **Volume Down:** Press and hold the Volume Down button.

Stereo & Crystal-clear Sound

40mm High-fidelity Speakers, Deliver Lively Music



Image: A visual depicting the immersive stereo sound experience provided by the 40mm HiFi speakers within a helmet, with musical notes emanating from the headset.

Phone Call Management

- **Answer Call:** Press the Multi-function button once.
- **End Call:** Press the Multi-function button once during a call.
- **Reject Call:** Press and hold the Multi-function button for 2 seconds.
- **Redial Last Number:** Double-press the Multi-function button.

FM Radio Function

- **Turn On/Off FM:** Press the FM button once.
- **Scan Channels:** Press and hold the FM button for 2 seconds to automatically scan and save available stations.
- **Next Station:** Press the Volume Up button once while FM is active.
- **Previous Station:** Press the Volume Down button once while FM is active.

Voice Assistant Activation

Activate your phone's voice assistant (Siri, Google Assistant, etc.) by pressing the Voice Assistant button once.

RGB Lighting Modes

The DK06 features 6 cool RGB lighting modes for personalization and enhanced visibility.

- **Change Mode:** Press the RGB Light button once to cycle through different lighting effects.
- **Turn On/Off RGB:** Press and hold the RGB Light button for 2 seconds.



Image: A display of multiple DK06 units showcasing the various vibrant RGB lighting modes available, indicating enhanced visibility for night riding.

MAINTENANCE AND CARE

- **Cleaning:** Wipe the headset with a soft, damp cloth. Do not use harsh chemicals or abrasive cleaners.
- **Water Resistance:** The DK06 is IP65 waterproof, meaning it is protected against dust and low-pressure water jets. While it can withstand rain, avoid submerging it in water.
- **Storage:** Store the headset in a cool, dry place when not in use. Avoid extreme temperatures.

- **Battery Care:** To prolong battery life, avoid fully discharging the battery frequently. Charge the device regularly, even if not in use for extended periods.

TROUBLESHOOTING

Problem	Possible Cause	Solution
Device does not power on.	Low battery.	Charge the device for at least 1.5 hours.
Cannot pair with mobile device.	Device not in pairing mode; Bluetooth off on phone; device already paired.	Ensure device is in pairing mode (flashing red/blue). Turn on phone's Bluetooth. Disconnect from other devices.
Intercom not connecting.	Units too far apart; one unit not in intercom pairing mode.	Ensure units are within 1000m. Verify both units are in intercom pairing mode as per instructions.
Poor audio quality/noise.	Microphone/speakers improperly positioned; high wind noise.	Adjust speaker and microphone placement. The DK06 has 98% noise reduction, but extreme wind may still affect quality.
FM radio not working.	Poor signal area; FM function not activated.	Move to an area with better signal. Ensure FM mode is activated and try scanning channels.

98% Noise Cancellation

CVC & DSP Noise Reduction Technologies Ensure You Enjoy Crystal Clear Sound While Riding

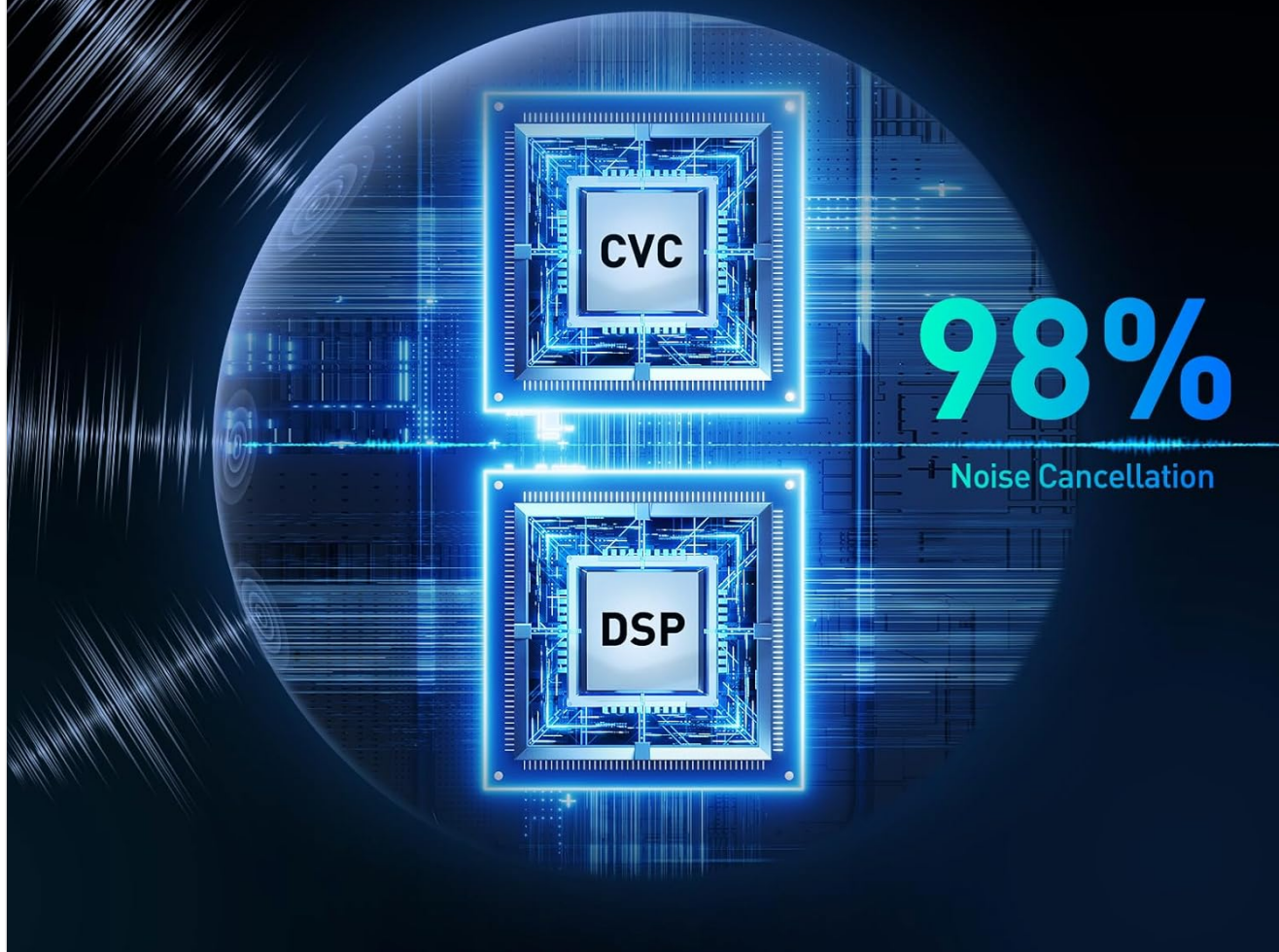


Image: A graphic illustrating the CVC & DSP noise reduction technologies, emphasizing the 98% noise cancellation capability of the DK06 headset for clear sound during rides.

SPECIFICATIONS

Feature	Detail
Model Name	DK06
Bluetooth Version	5.2
Intercom Distance	Up to 1000 meters (2-Riders)
Battery Capacity	1000mAh
Charging Time	1.5 Hours

Feature	Detail
Music Playback Time	40 Hours
Intercom Usage Time	35 Hours
Standby Time	400 Hours
Water Resistance	IP65 Waterproof
Noise Reduction	DSP/CVC/Windproof Microphone (98% noise reduction)
Speakers	40mm HiFi Speakers
Headphones Jack	Type-C
Material	Acrylonitrile Butadiene Styrene (ABS)
Weight	12.6 ounces
RGB Lighting	6 Modes
Included Components	User Manual, 40MM HiFi Speakers, DK06 motorcycle intercom, Soft/Hard Mic, 3M / Screw Clip

WARRANTY AND SUPPORT

For warranty information and technical support, please refer to the official gearelec website or contact their customer service. Keep your purchase receipt as proof of purchase.

Manufacturer: GEARELEC


ASIN: B0CZ8P8YMP





Date First Available: May 15, 2024

For further assistance, visit the [gearelec Store on Amazon](#).

© 2024 gearelec. All rights reserved.

Related Documents - DK06

	<p>GEARELEC F1 Motorcycle Helmet Wireless Headset User Manual</p> <p>User manual for the GEARELEC F1 Motorcycle Helmet Wireless Headset, covering features, package contents, installation, product overview, usage instructions, specifications, and precautions.</p>
---	--

	<p>GEARELEC GX10 Helmet Bluetooth Intercom System User Manual & Features</p> <p>Discover the GEARELEC GX10, a state-of-the-art v5.2 Bluetooth intercom system designed for motorcycle riders. This system offers seamless multi-person communication for up to 10 riders over 1000m, advanced noise reduction, IP67 waterproofing, music sharing, and extended battery life. Get detailed information on installation, operation, features, and specifications.</p>
	<p>GEARELEC G-Max Instruction Manual: Helmet Wireless Intercom System Guide</p> <p>Comprehensive instruction manual for the GEARELEC G-Max helmet wireless intercom system. Learn about installation, features, Bluetooth pairing, music playback, FM radio, and intercom functions for motorcycle riders.</p>
	<p>GEARELEC GX10 Helmet Bluetooth Intercom System User Manual</p> <p>Comprehensive guide to the GEARELEC GX10 Helmet Bluetooth Intercom System, covering features, operations, music control, FM radio, and pairing with phones and other intercoms. Features v5.2 Bluetooth, 1000m intercom range, and IP67 waterproofing for motorcycle riders.</p>
	<p>GEARELEC G2 Motorcycle Helmet Headset User Manual</p> <p>Comprehensive user manual for the GEARELEC G2 Motorcycle Helmet Headset, covering installation, operation, pairing, music sharing, and troubleshooting. Learn how to use your G2 headset for calls, music, and intercom communication.</p>
	<p>J&M BT06 Motorcycle Helmet Headset Evaluation and Review</p> <p>A detailed evaluation of the J&M BT06 motorcycle helmet headset, comparing its audio quality, intercom functionality, and features against Sena, Cardo, and Gearelec models. Includes performance analysis at various speeds.</p>