



[Manuals.plus](#) /

› [UDPATIO](#) /

› [UDPATIO 8 Piece Patio Sets with Fire Pit Table User Manual](#)

UDPATIO 8 Piece Patio Sets with Fire Pit Table

UDPATIO 8 Piece Patio Sets with Fire Pit Table User Manual

Model: 8 Piece Patio Sets with Fire Pit Table

1. INTRODUCTION

Thank you for choosing the UDPATIO 8 Piece Patio Set with Fire Pit Table. This comprehensive outdoor furniture set is designed to enhance your patio, deck, or garden space, offering comfort, versatility, and a warm ambiance. Featuring durable PE wicker, fade-resistant cushions, and a CSA-certified fire pit, this set is built for lasting enjoyment. This manual provides essential information for assembly, operation, maintenance, and safety to ensure optimal performance and longevity of your patio set.



Image 1.1: The complete UDPATIO 8 Piece Patio Set, featuring a sectional sofa, individual chairs, a coffee table, and a central fire pit table, arranged on a patio with a pool in the background.

2. SAFETY INFORMATION

Please read and understand all safety warnings before assembly or operation of the patio set and fire pit. Failure to follow these instructions may result in property damage, personal injury, or death.

- **Fire Pit Safety:** Do not use the fire pit near open flames or flammable materials. Ensure adequate ventilation.
- **Stability:** Always stabilize the furniture to prevent tip-over, especially on uneven surfaces.
- **Assembly:** Ensure proper and complete assembly of all components before use.
- **Load Capacity:** Do not exceed the recommended load capacity for seating or tables.
- **Children and Pets:** Keep children and pets away from the fire pit during operation and ensure they do not play unsupervised on the furniture.
- **Hot Surfaces:** The fire pit and surrounding areas will become hot during use. Allow ample time for cooling before touching.

- **Gas Leaks:** Regularly check for gas leaks according to the fire pit's specific instructions.

PRODUCT'S DETAILS



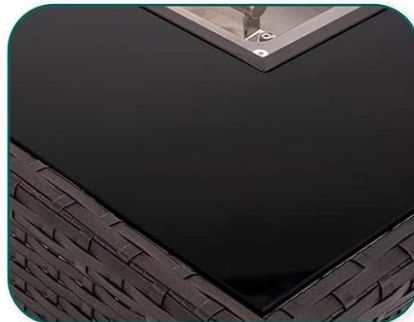
600D PVC Coating Fabric
100% Waterproof Cover



CSA
Certification



Stainless Steel Burner
& Colorful Glass Stone



Tempered
Glass Tabletop



Dual Control
Automatic Igniter

Image 2.1: Close-up of the fire pit table, highlighting its CSA certification, stainless steel burner, tempered glass tabletop, and dual control automatic igniter.

3. PACKAGE CONTENTS

Verify that all components are present before beginning assembly. If any parts are missing or damaged, contact customer support.

- Sectional Sofa Components (various pieces for flexible arrangement)
- Fire Pit Table with Glass Top
- Coffee Table
- Seat Cushions (4-inch thick)
- Back Cushions
- 2 x 100% Waterproof Covers

- 9 lbs Colorful Fire Stones
- 304 Stainless Steel Burner
- Assembly Hardware (screws, wrench, etc.)
- Instruction Manual

PRODUCT DETAILS

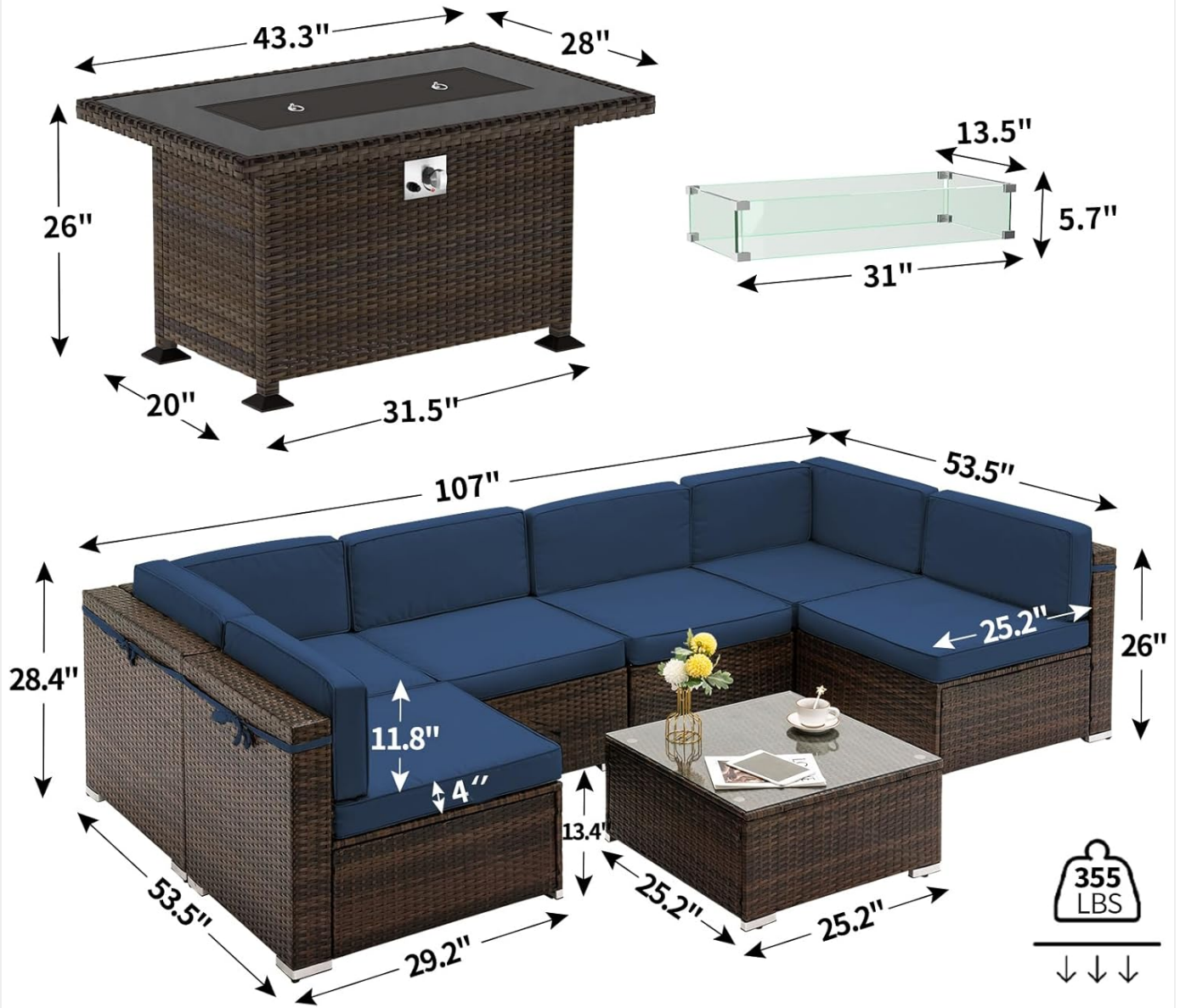


Image 3.1: Diagram showing the dimensions of the sectional sofa components, coffee table, and fire pit table, along with the overall weight capacity of 355 lbs.

4. ASSEMBLY INSTRUCTIONS

Assembly typically requires two adults. Do not fully tighten screws until all components are loosely assembled to allow for alignment. A power drill with appropriate bits can expedite the process.

1. **Unpack Components:** Carefully remove all parts from the packaging and lay them out on a soft, clean surface to prevent scratches.
2. **Assemble Sofa Sections:** Attach the backrests and armrests to the seat frames using the provided hardware. Loosely tighten all screws.
3. **Connect Sofa Sections:** Use the secure fixing buckles on the metal frame's bottom to connect the desired sofa

sections.

4. **Assemble Coffee Table:** Attach the legs to the coffee table top. Place the tempered glass top securely.
5. **Assemble Fire Pit Table:** Attach the legs to the fire pit table body. Install the stainless steel burner and place the colorful fire stones. Secure the tempered glass wind guard.
6. **Final Tightening:** Once all sections are assembled and aligned, fully tighten all screws.
7. **Place Cushions:** Position the seat and back cushions. Utilize the silicone points under seat cushions and fixing straps on back cushions to prevent sliding.
8. **Adjust Leveling:** Use the adjustment knob on the sofa couch feet to maintain evenness on uneven surfaces.



Image 4.1: Details showing the secure fixing buckles for connecting furniture sections and the cushion fixing strap design to prevent sliding.

5. OPERATING INSTRUCTIONS (FIRE PIT)

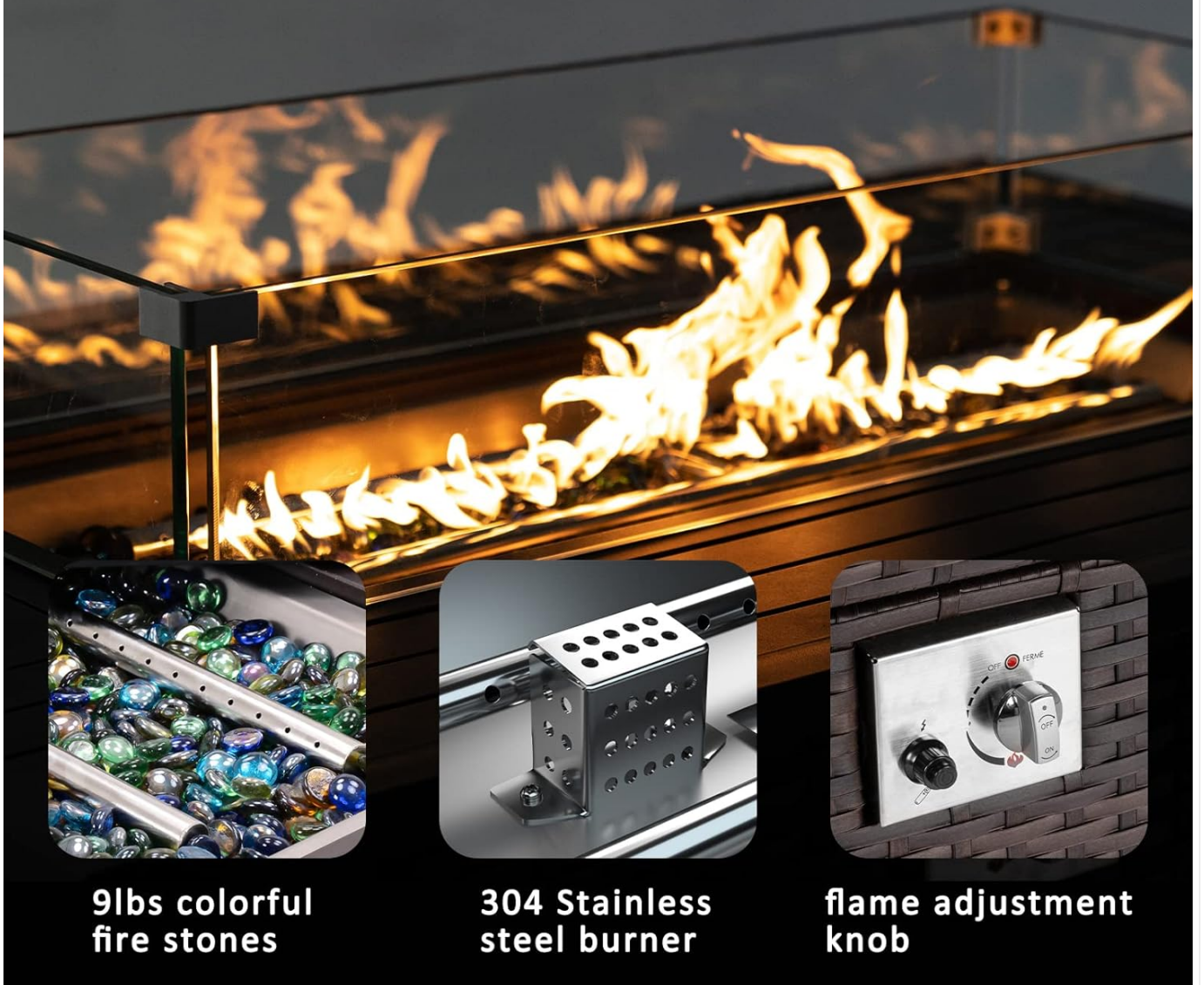
The fire pit operates on liquid propane and features an auto-ignition burner.

1. **Connect Propane Tank:** Ensure the propane tank is securely connected to the fire pit's gas line.
2. **Open Gas Valve:** Slowly open the valve on the propane tank.
3. **Ignite Burner:** Turn the control knob on the fire pit to the "ON" or "IGNITE" position and press the auto-ignition button. You should hear a click and see the flame ignite.
4. **Adjust Flame:** Use the control knob to adjust the flame height to your desired level.
5. **To Turn Off:** Turn the control knob to the "OFF" position. Close the valve on the propane tank.

Note: If the igniter does not work, ensure the propane tank is open and the gas line is clear. A long lighter can be used to manually ignite the burner if the auto-igniter fails.

50000 BTU OUTPUT HEAT

protect the dancing flame from wind



**9lbs colorful
fire stones**

**304 Stainless
steel burner**

**flame adjustment
knob**

Image 5.1: Detailed view of the fire pit's components, including the 9 lbs colorful fire stones, 304 stainless steel burner, and the flame adjustment knob for easy control.

Your browser does not support the video tag.

Video 5.1: An official product video demonstrating the UDPATIO Rattan Sets, showcasing its modular design, comfortable seating, and suitability for family leisure time. This video highlights the product's versatility and user experience.

6. MAINTENANCE

Proper maintenance will extend the life and appearance of your patio set.

- **Cleaning:** Wipe the rattan and glass surfaces with a dry cloth. For deeper cleaning, use a mild soap and water solution, then rinse thoroughly and dry.
- **Cushion Care:** The fade-resistant cushions have a convenient zipper design for easy washing. Remove covers and machine wash on a gentle cycle with cold water. Air dry only.
- **Waterproof Covers:** Utilize the two included 100% waterproof covers to protect the furniture from harsh weather and stains when not in use. Ensure the furniture is dry before covering.

- **Fire Pit:** Keep the fire pit burner and fire stones clean and free of debris. Store the fire pit in a dry, covered area during prolonged periods of non-use or inclement weather.

100% WATERPROOF COVER

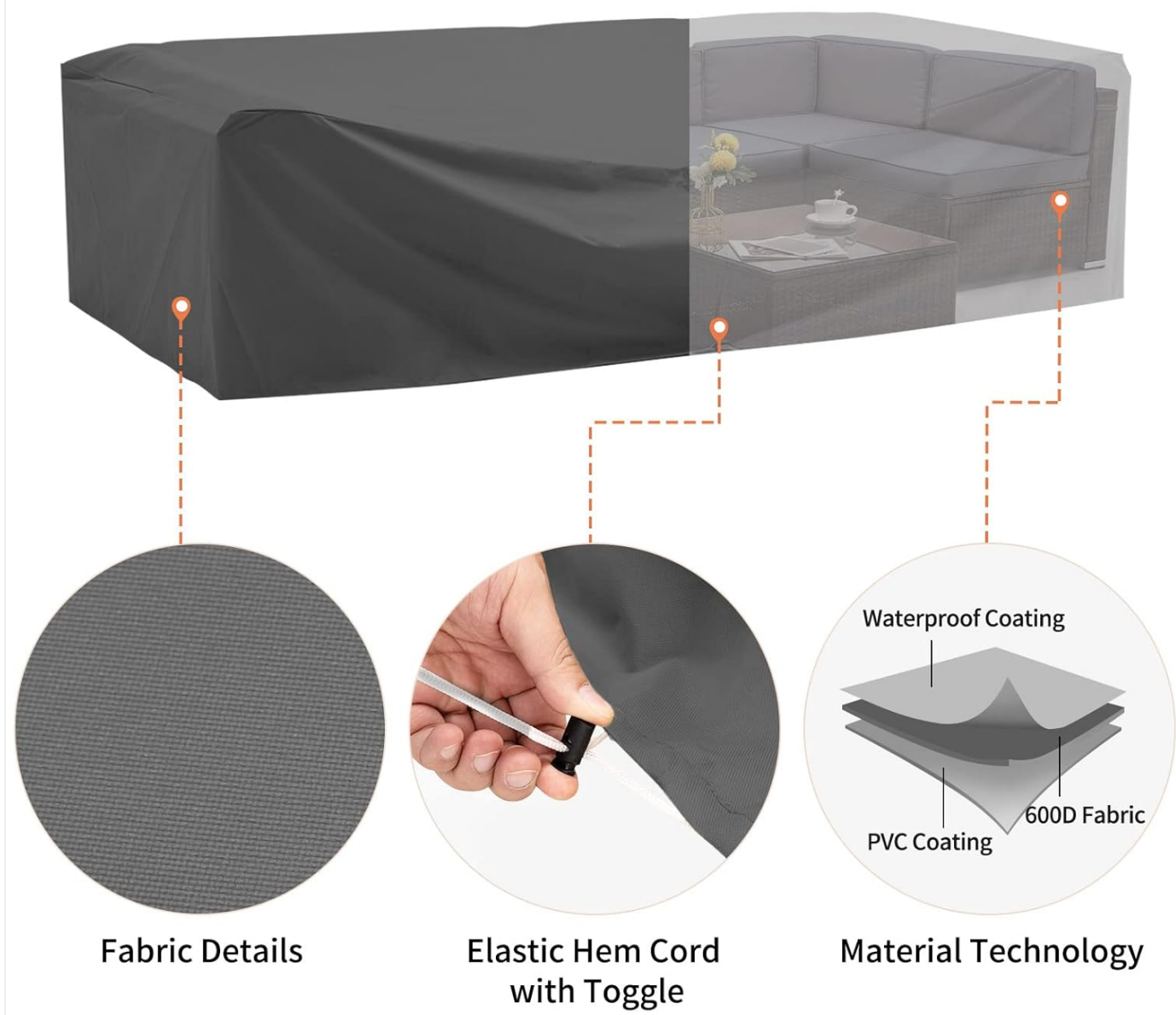


Image 6.1: Illustration detailing the construction of the 100% waterproof cover, showing its waterproof and water-repellent outer layer, 600-density fabric middle layer, and PVC coated inner layer, along with the elastic hem cord with toggle.

7. TROUBLESHOOTING

Problem	Possible Cause	Solution
Fire pit does not ignite with auto-igniter.	Propane tank valve not fully open, gas line obstruction, faulty igniter.	Ensure propane tank valve is fully open. Check for kinks in the gas line. If igniter is faulty, use a long lighter for manual ignition. Contact customer service for igniter replacement if needed.
Cushions slide off the furniture.	Cushions not properly secured.	Ensure silicone points on the bottom of seat cushions are making contact with the frame. Utilize the two fully encompassing fixing straps on the back cushions to secure them.

Problem	Possible Cause	Solution
Furniture feels wobbly or uneven.	Uneven surface, loose assembly screws.	Use the adjustment knobs on the sofa couch feet to level the furniture. Check and tighten all assembly screws.
Cushions fading quickly.	Prolonged exposure to direct sunlight without protection.	While cushions are fade-resistant, prolonged exposure can still cause fading. Use the waterproof covers when the furniture is not in use, especially during intense sun.

8. SPECIFICATIONS

Brand: UDPATIO

Model: 8 Piece Patio Sets with Fire Pit Table

Color: U2-navy Blue

Material: PE Wicker, Tempered Glass, 304 Stainless Steel

Fire Pit Output: 50000 BTU (CSA Certified)

Seat Height: 17.5 Inches (assembled)

Cushion Thickness: 4 Inches

Fire Stones: 9 lbs Colorful Fire Stones included

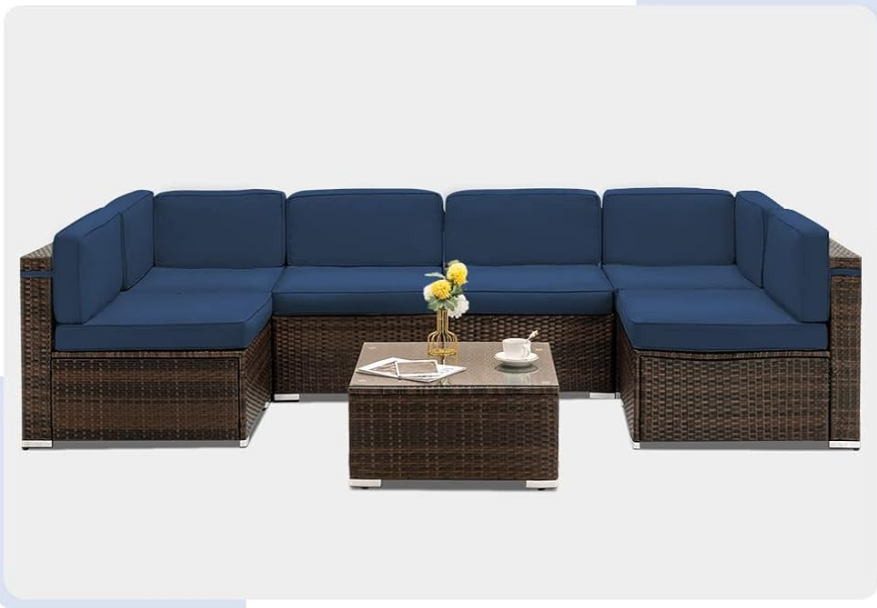
Waterproof Covers: 2 included (600-density fabric, PVC coated)

Product Care: Wipe with Dry Cloth (for rattan/glass), Machine wash gentle (cushion covers)

ASIN: B0CZ6VXCF1

Date First Available: March 27, 2024

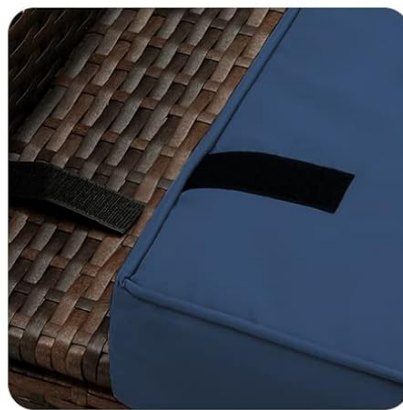
PRODUCT DETAILS



All-weather PE
Wicker Rattan



Cushion Fixing
Strap Design



Cushion Velcro Design



Adjustable Height for
Banlance

Image 8.1: Close-up details of the patio set, showing the all-weather PE wicker rattan, cushion fixing strap design, cushion velcro design, and adjustable height feature for leveling.

WHY PRUMIUM?

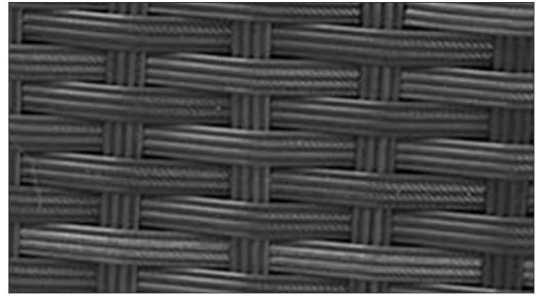
UDPATIO

VS

Other



Premuim New PE



Old Recycled PE



Tough & Durable



Tough & Durable



More Usetime



More Usetime



Image 8.2: A comparison highlighting the difference between premium new PE wicker used in this product and old recycled PE, emphasizing durability and longevity.

9. WARRANTY & SUPPORT

UDPATIO stands behind the quality of its products. For specific warranty details, claims, or technical support, please refer to the warranty card included with your purchase or contact UDPATIO customer service directly through the retailer where the product was purchased. Please have your purchase receipt and product model information ready when contacting support.

Contact Information: Refer to your purchase documentation or the seller's information on the product listing page for the most current contact details.

