

[Manuals.plus](#) /

› [NUASI](#) /

› [NUASI RBX-S60 4G LTE Solar Security Camera \(2-Pack\) Instruction Manual](#)

## NUASI RBX-S60

# NUASI RBX-S60 4G LTE Solar Security Camera (2-Pack) Instruction Manual

## 1. INTRODUCTION

This manual provides detailed instructions for the installation, operation, and maintenance of your NUASI RBX-S60 4G LTE Solar Security Camera 2-Pack. Please read this manual thoroughly before using the product to ensure proper function and safety.

### Product Overview

The NUASI RBX-S60 is a 2K 360° wireless outdoor security camera system powered by solar energy and 4G LTE connectivity. Designed for remote surveillance, it features color night vision, PIR motion detection, two-way audio, and an IP66 waterproof rating, making it suitable for various outdoor environments.



Image: Two NUASI RBX-S60 4G LTE Solar Security Cameras with solar panels.

## Key Features

- **4G LTE Connectivity:** Operates without Wi-Fi, requiring only a 4G LTE SIM card for remote access.
- **Solar Powered:** Equipped with a 6W solar panel and a 10400 mAh internal battery for continuous operation.
- **2K Ultra HD Resolution:** Provides clear video and images day and night.
- **360° Panoramic View:** Features 355° horizontal rotation and 100° vertical rotation for comprehensive coverage.
- **Color Night Vision:** Offers full-color night vision for enhanced clarity in low-light conditions.
- **PIR Motion Detection:** Intelligent human/animal detection reduces false alarms and sends real-time notifications.
- **Two-Way Audio:** Allows for real-time communication through the camera.
- **IP66 Waterproof:** Durable design for outdoor use in various weather conditions.
- **Easy Installation:** Simple setup with the UBox app and flexible mounting options.

## 2. PACKAGE CONTENTS

Please verify that all items are present in your package:

- 2 x NUASI 4G Security Camera
- 2 x EIOTCLUB SIM Card (with 300 MB free data)

- 2 x 6W Solar Panel
- 1 x User Manual
- Mounting Screws and other accessories

### 3. SETUP GUIDE

#### 3.1. SIM Card and SD Card Installation

The camera requires a 4G LTE SIM card for network connectivity and an SD card for local storage. A SIM card with 300 MB of trial data and a 32GB SD card are included.

1. Locate the SIM card and SD card slots on the camera. These are typically protected by a rubber cover.
2. Carefully insert the provided 4G LTE SIM card into the SIM slot. Ensure it is inserted in the correct orientation until it clicks into place.
3. Insert the provided 32GB SD card into the SD card slot. The camera supports up to 128GB SD cards.
4. Close the rubber cover securely to maintain the IP66 waterproof rating.

**Hora de alerta personalizada**

La aplicación puede configurar la hora de la alerta y puedes elegir desactivarla durante los momentos en los que no la necesites, para servirte mejor

Image: Inserting SIM and SD cards into the camera.

#### 3.2. App Installation and Pairing

The camera operates via the UBox mobile application.

1. Download the UBox app from the App Store (iOS) or Google Play Store (Android).
2. Register for a new account or log in if you already have one.
3. Power on the camera.
4. In the UBox app, tap 'Add Device' and follow the on-screen instructions to scan the QR code located on the camera.
5. Once paired, you can access the camera's live feed and settings.



### 3.3. Mounting the Camera

The camera offers flexible mounting options to suit your outdoor surveillance needs.

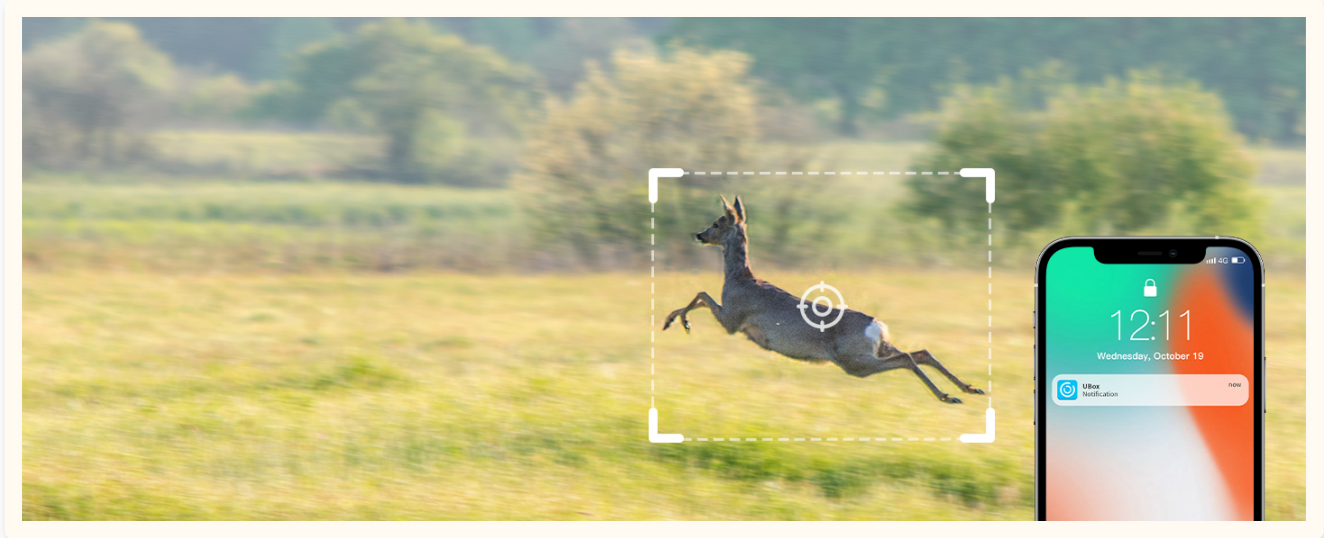


Image: Two optional mounting methods for the camera.

1. **Integrated Mounting:** Attach the camera and solar panel directly to a sturdy surface like a tree or wall using the provided strap or screws. Ensure the solar panel receives adequate direct sunlight.
2. **Separate Mounting:** Mount the camera and solar panel separately. Connect them using the power cable. This allows for optimal positioning of the solar panel for sunlight exposure, even if the camera needs to be in a shaded area.

**Important:** When mounting, ensure the camera has a clear line of sight to the area you wish to monitor and that the solar panel is positioned to receive maximum sunlight throughout the day. Secure all connections to prevent dislodgement.

## 4. OPERATING INSTRUCTIONS

### 4.1. Live View and Pan/Tilt/Zoom Control

Access the live video feed and control the camera's movement through the UBox app.

1. Open the UBox app and select your camera.
2. The live feed will appear. Use the on-screen controls to pan (355° horizontal) and tilt (100° vertical) the camera to adjust your viewing angle.
3. The camera also supports digital zoom for closer inspection of details.

## El video en vivo se puede ver en cualquier momento y en cualquier lugar

Visualiza tu zona en tiempo real con la APP UBox donde tengas señal



Image: Live video streaming on the UBox app.

### 4.2. Motion Detection and Alerts

The camera uses a PIR sensor for intelligent motion detection, minimizing false alarms.

1. In the UBox app settings, enable and configure motion detection sensitivity.
2. When motion is detected, the camera will record an event and send a real-time notification to your smartphone.
3. You can review recorded events in the app's playback section.

# Detección de movimiento PIR

Recibe alertas en tiempo real en tu teléfono, nunca te pierdas nada



Image: PIR motion detection alert on a smartphone.

## 4.3. Two-Way Audio

Communicate with visitors or deter intruders using the camera's built-in microphone and speaker.

- While viewing the live feed in the UBox app, tap the microphone icon to speak.
- Tap the speaker icon to listen to audio from the camera's location.

## 4.4. Night Vision Modes

The camera provides clear surveillance even in complete darkness.

- **Infrared Night Vision:** Automatically activates in low light, providing clear black and white images.
- **Color Night Vision:** The camera can utilize its built-in spotlights to provide full-color video at night when motion is detected or manually activated.

# Video y foto True 2K

Obtener videos y fotos claros tanto de día como de noche



Image: Comparison of night vision and daytime video quality.

## 4.5. Recording and Storage

Video recordings can be stored locally or in the cloud.

- **SD Card Storage:** Recordings are saved to the inserted SD card (up to 128GB). You can access and download these recordings via the UBox app.
- **Cloud Storage:** A 30-day free trial of cloud storage is available. After the trial, subscription plans can be purchased through the UBox app.

## 4.6. Data Plan Management

The camera operates on a 4G LTE network. The included SIM card comes with 300 MB of trial data.

- When 80% of your data is used, you will receive a notification.
- You can purchase additional data plans through the UBox app. Various plans are available (e.g., 30 days, 180 days, 360 days, 720 days).
- The camera is compatible with most major 4G LTE providers (e.g., Vodafone, Orange, Telekom, O2).

# Señal 4G LTE, no se necesita WiFi

Admite señal celular 4G LTE, ¡más conveniente y confiable!



4G

~~WiFi~~  
no soportar

Movistar

O<sub>2</sub>

vodafone

orange

- Compatible con **Movistar, O2-Telefónica, Vodafone, Orange**
- Incluye tarjeta SIM con **300 MB** de datos celulares de prueba
- Incluye **tarjeta SD de 32 GB** y un mes de prueba gratuita de almacenamiento en la nube

Image: 4G LTE connectivity and compatible network providers.

## 5. MAINTENANCE

### 5.1. Solar Panel Care

To ensure optimal charging efficiency, regularly clean the solar panel surface to remove dust, dirt, leaves, or snow. A clean, damp cloth is usually sufficient. Avoid abrasive cleaners.



**Funciona con panel solar**  
Batería de 10400 mAh integrada y panel solar de 6 W incluido

Image: Camera powered by solar panel.

## 5.2. Battery Management

The camera features a built-in 10400 mAh rechargeable battery. While the solar panel provides continuous charging, direct sunlight is crucial. In winter or prolonged cloudy periods, solar charging efficiency may decrease. Monitor battery levels via the UBox app.

## 5.3. Cleaning

Wipe the camera lens and body with a soft, dry cloth. For stubborn dirt, a slightly damp cloth can be used. Do not use harsh chemicals or abrasive materials that could damage the camera's finish or lens.



## IP66 Resistente al agua y al fuego

No hay necesidad de preocuparse por el mal tiempo, perfecto para exteriores

Image: IP66 waterproof camera in rainy conditions.

## 6. TROUBLESHOOTING

### • Camera Offline:

- Check 4G LTE signal strength in the camera's location.
- Ensure the SIM card has an active data plan and sufficient data balance.
- Verify the camera battery is charged.
- Restart the camera by powering it off and on.

### • No Motion Detection Alerts:

- Check motion detection settings in the UBox app (sensitivity, schedule).
- Ensure app notifications are enabled on your smartphone.
- Verify the camera's field of view is clear.

### • Poor Video Quality:

- Clean the camera lens.

- Ensure adequate lighting for optimal image quality, especially at night.
  - Check 4G signal strength, as poor signal can affect streaming quality.
- **Solar Panel Not Charging:**
    - Ensure the solar panel is clean and free from obstructions.
    - Verify the solar panel is positioned to receive direct sunlight for several hours daily.
    - Check the connection cable between the solar panel and the camera.

## 7. TECHNICAL SPECIFICATIONS

Feature	Specification
Model Number	RBX-S60
Video Capture Resolution	2K
Connectivity Technology	Wireless (4G LTE Cellular)
Power Source	Battery, Solar Power
Battery Type	Lithium Polymer (10400 mAh)
Solar Panel Wattage	6 Watts
Night Vision Range	30 Meters
Viewing Angle	360 Degrees (355° Pan, 100° Tilt)
Special Features	Two-Way Audio, Built-in Light, HD Resolution, Motion Sensor, Night Vision
Indoor/Outdoor Use	Outdoor
Waterproof Rating	IP66
Storage	SD Card (up to 128GB, 32GB included), Cloud Storage
Controller Type	UBox App
Product Dimensions	31 x 19 x 16 cm; 2.4 kg

## 8. WARRANTY AND SUPPORT

### 8.1. Warranty Information

NUASI is committed to providing high-quality smart security products. Specific warranty details may vary by region and retailer. Please refer to your purchase documentation or contact customer support for precise warranty terms.

### 8.2. Customer Support

For technical assistance, troubleshooting, or any inquiries regarding your NUASI RBX-S60 camera, please contact NUASI customer support. Contact information can typically be found on the product packaging, the NUASI official website, or within the UBox application.

NUASI's R&D department for smart security products was established in 2015, focusing on integrating R&D, production, and sales to create intelligent, harmonious, and beautiful living experiences. Your personal security

expert is dedicated to addressing every detail of your life.



Image: Data Protection Shield.

Our cameras utilize the AES algorithm for data encryption and the ECDHE algorithm for high-security key exchange, ensuring secure transmission and storage.



Image: Transparency QR code for product verification.

Our products can be verified at any time using a unique QR code, allowing us to proactively prevent counterfeits.

