

manuals.plus /

- › [boAt](#) /
- › [boAt Airdopes 311 Pro True Wireless Earbuds User Manual](#)

boAt Airdopes 311 Pro (Model: 1000003312)

boAt Airdopes 311 Pro

TRUE WIRELESS EARBUDS USER MANUAL

1. PRODUCT OVERVIEW

The boAt Airdopes 311 Pro are advanced True Wireless Stereo (TWS) earbuds designed for an immersive audio experience. They feature long battery life, clear call quality, and a low-latency gaming mode, making them suitable for various activities from daily commutes to intense gaming sessions.



Image: boAt Airdopes 311 Pro earbuds securely placed within their transparent charging case.

Key Features:

- **Up to 50 Hours of Playback:** Extended battery life for prolonged listening.
- **ENx Technology:** Dual microphones with environmental noise cancellation for clear voice calls.
- **ASAP Charging:** Quick charge feature providing 150 minutes of playtime with just 10 minutes of charging.
- **boAt Signature Sound:** Equipped with 10mm drivers for rich and powerful audio.
- **BEAST Mode:** 50ms low latency for an enhanced gaming experience.
- **Bluetooth v5.3:** Latest Bluetooth connectivity for stable and efficient pairing.
- **IPX4 Water Resistance:** Protection against splashes and sweat.
- **Transparent Minimalistic Design:** Unique and stylish transparent lid on the charging case.

2. SETUP AND INITIAL USE

2.1 Charging the Earbuds and Case

Before first use, ensure both the earbuds and the charging case are fully charged. Connect the charging case to a power source using a Type-C USB cable. The LED indicator on the case will show charging status. A full charge takes approximately 1.5 hours.



Image: Visual representation of 50 hours playback and ASAP charging capability of the Airdopes 311 Pro.

2.2 Pairing with Your Device

1. Open the lid of the charging case. The earbuds will automatically enter pairing mode.
2. On your smartphone or Bluetooth-enabled device, go to the Bluetooth settings.
3. Search for available devices and select "boAt Airdopes 311 Pro" from the list.
4. Once connected, you will hear an audio prompt, and the LED indicator on the earbuds will turn off.

BEAST™ Mode

50ms Low Latency Gaming



Image: A collage highlighting key features: Bluetooth v5.3 connectivity, IPX4 water and sweat shield, one-touch voice assistant activation, and convenient Type-C charging.

2.3 boAt Hearables App

For enhanced control and features, download the boAt Hearables App. The app allows you to stream top tracks, listen to audiobooks, find misplaced earbuds, and access the user manual instantly.



Image: QR code to download the boAt Hearables App, which provides additional functionalities for your earbuds.
Scan the QR code or visit lead.me/bdAX6k to download the app.

3. OPERATING INSTRUCTIONS

3.1 Touch Controls

The Airdopes 311 Pro feature intuitive touch controls on each earbud. Specific functions may vary, but common controls include:

- **Play/Pause:** Single tap on either earbud.
- **Next Track:** Double tap on the right earbud.
- **Previous Track:** Double tap on the left earbud.
- **Answer/End Call:** Single tap on either earbud.
- **Reject Call:** Long press on either earbud.
- **Activate Voice Assistant:** Triple tap on either earbud.

3.2 Voice Assistant

The earbuds support built-in voice assistants like Google Assistant or Siri. Triple tap either earbud to activate your device's voice assistant and issue commands.

3.3 BEAST Mode (Low Latency Gaming)

For an optimized gaming experience, activate BEAST Mode. This mode reduces audio latency to 50ms, ensuring synchronized audio and visuals during gameplay. Refer to the boAt Hearables App or your product's specific instructions for activation.

boAt Signature Sound

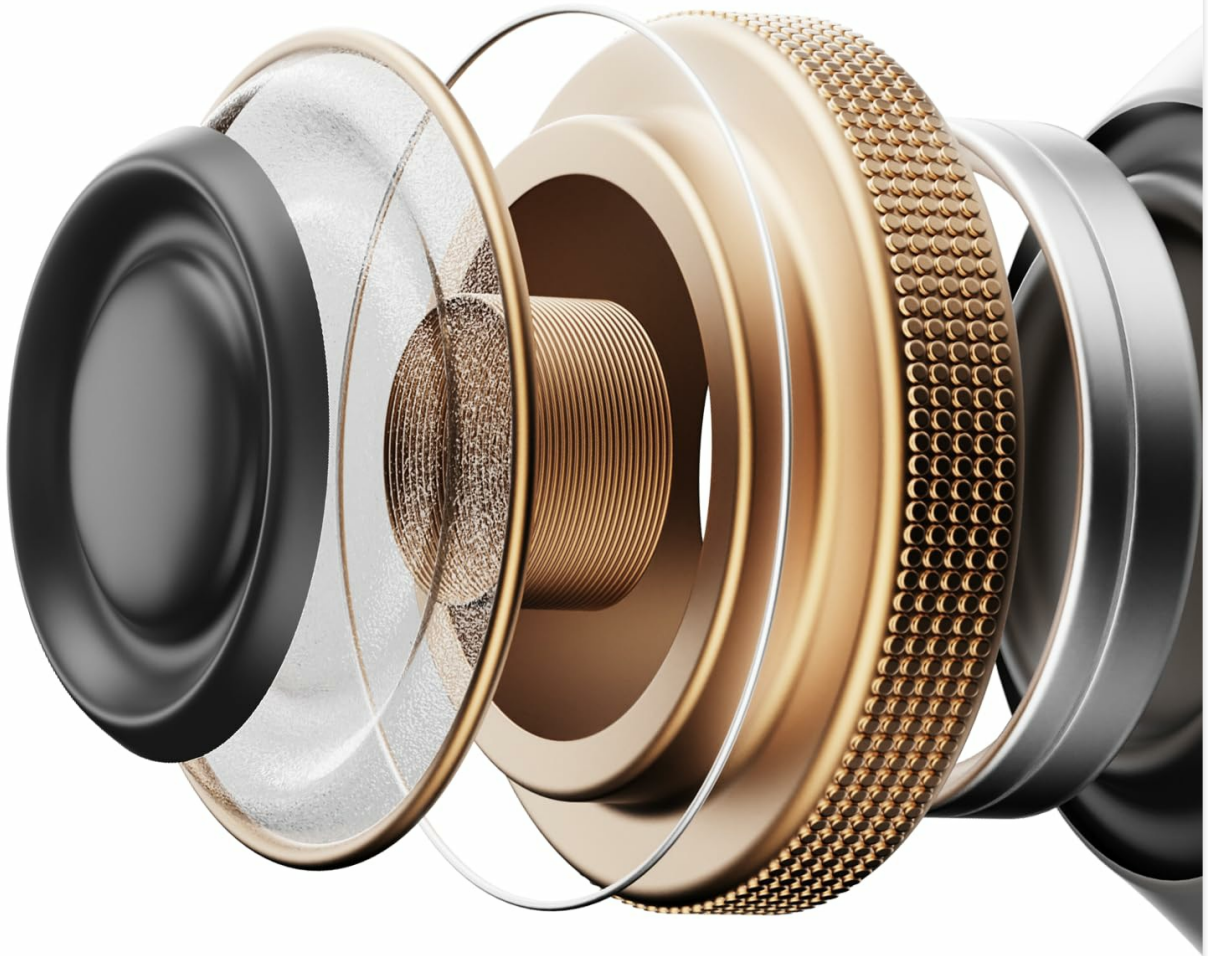


Image: Illustration of BEAST Mode, indicating 50ms low latency for an enhanced gaming experience with the Airdopes 311 Pro.

3.4 ENx Technology for Calls

The dual microphones with ENx Technology ensure clear voice calls by cancelling out environmental noise. This allows for clear communication even in noisy surroundings.

4. MAINTENANCE AND CARE

4.1 Cleaning

- Gently wipe the earbuds and charging case with a soft, dry, lint-free cloth.
- Do not use abrasive cleaners, alcohol, or chemical solvents.
- Clean the charging contacts on both the earbuds and the case regularly to ensure proper charging.

4.2 Water Resistance (IPX4)

The Airdopes 311 Pro are IPX4 rated, meaning they are resistant to splashes of water and sweat. They are

not designed for submersion in water. Avoid exposing them to heavy rain or showering with them.

4.3 Storage

When not in use, store the earbuds in their charging case to protect them and keep them charged. Store the case in a cool, dry place away from direct sunlight and extreme temperatures.



Image: The transparent minimalistic design of the boAt Airdopes 311 Pro charging case, showcasing the earbuds inside.

5. TROUBLESHOOTING

5.1 Earbuds Not Pairing

- Ensure both earbuds are charged.
- Turn off Bluetooth on your device and turn it back on.
- Forget/delete "boAt Airdopes 311 Pro" from your device's Bluetooth list and try pairing again.
- Place the earbuds back in the case, close the lid, wait a few seconds, then open the lid to re-enter pairing mode.

5.2 No Sound or Low Volume

- Check the volume level on both your device and the earbuds.
- Ensure the earbuds are properly seated in your ears.
- Clean any debris from the earbud nozzles.
- Reconnect the earbuds to your device.

5.3 Charging Issues

- Ensure the charging cable is securely connected to both the case and the power source.
- Try a different charging cable or power adapter.
- Clean the charging contacts on the earbuds and inside the case.

5.4 Earbud Reset

If you experience persistent issues, a factory reset may resolve them. Refer to the boAt Hearables App or the official boAt support website for specific reset instructions for the Airdopes 311 Pro.

6. SPECIFICATIONS

Feature	Detail
Model Name	Airdopes 311 Pro
Model Number	1000003312
Connectivity Technology	Bluetooth v5.3
Included Components	1 X TWS Earbuds
Charging Time	1.5 Hours
Item Weight	120 Grams
Water Resistance Level	IPX4 (Water Resistant)
Frequency Range	20Hz-20KHz
Audio Driver Type	Dynamic Driver (10mm)
Product Dimensions	4.2 x 9.4 x 11.6 cm
Battery Cell Composition	Lithium Polymer
Control Type	Touch Control
Special Features	Built-In Voice Assistant, BEAST Mode (Low Latency), ENx Technology

7. WARRANTY AND SUPPORT

The boAt Airdopes 311 Pro is manufactured by Imagine Marketing Ltd. For warranty claims, technical support,

or further assistance, please refer to the official boAt website or contact their customer service. Keep your proof of purchase for warranty validation.

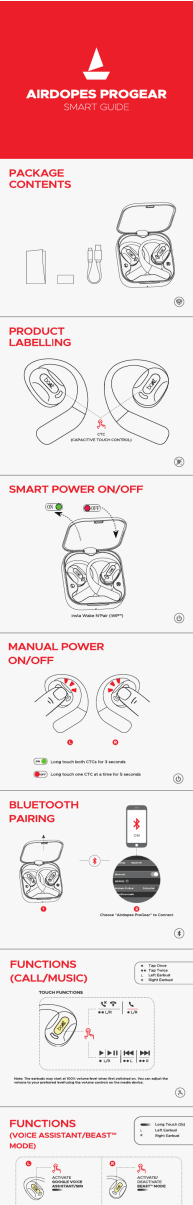
Manufacturer: Imagine Marketing Ltd

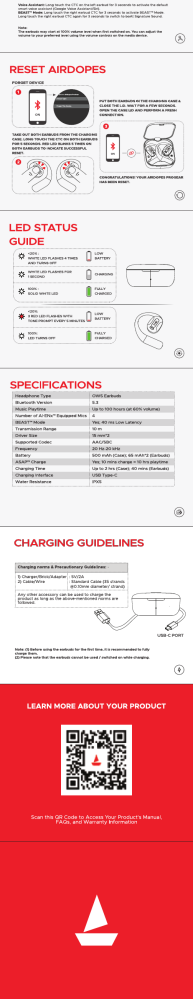



Country of Origin: China

Importer: Imagine Marketing Ltd

© 2024 boAt. All rights reserved.

Related Documents - Airdopes 311 Pro (Model: 1000003312)

	<p>boAt Airdopes Crude: User Manual & Features Guide</p> <p>Comprehensive guide to the boAt Airdopes Crude True Wireless Stereo earbuds, covering setup, charging, functions, specifications, and troubleshooting. Learn how to use voice assistant, BEAST™ Mode, and ENx™ Mode for an enhanced audio experience.</p>
	<p>boAt Airdopes 121 PRO User Manual and Features</p> <p>Comprehensive user manual for boAt Airdopes 121 PRO wireless earbuds, detailing features, functions, connectivity, charging, and specifications. Learn about BEAST™ Mode and ENx™ Tech.</p>
	<p>boAt Airdopes ProGear: User Guide for 100-Hour Wireless Earbuds</p> <p>Explore the features and functionality of the boAt Airdopes ProGear wireless earbuds. This guide covers pairing, touch controls, BEAST™ Mode, IPX5 water resistance, battery life, and specifications.</p>

	
	<p>boAt Airdopes 100 True Wireless Earbuds User Manual</p> <p>Comprehensive user manual for boAt Airdopes 100 true wireless earbuds, covering features, connection, usage, specifications, and troubleshooting.</p>
	<p>boAt Airdopes 71: TWS Wireless Earbuds User Manual & Specifications</p> <p>Comprehensive guide to the boAt Airdopes 71 True Wireless Stereo (TWS) earbuds. Learn about features like BEAST™ Mode, ENx™ Tech, IWP™, pairing, charging, basic functions, and specifications.</p>
	<p>boAt Airdopes Genesis User Manual: Features, Specs, and Troubleshooting</p> <p>Comprehensive user manual for boAt Airdopes Genesis TWS wireless earbuds. Learn about pairing, functions, BEAST™ Mode, ENx™ Tech, specifications, and troubleshooting.</p>