

## Jesebang A21

# Jesebang Wireless Earbuds Bluetooth 5.3 Headphones User Manual

Model: A21

## 1. INTRODUCTION

Thank you for choosing Jesebang Wireless Earbuds. These earbuds are designed to provide a high-fidelity audio experience with superior clear calls, featuring Bluetooth 5.3 technology, IP7 waterproof rating, and a comfortable earhook design, ideal for sports and daily use. This manual will guide you through the setup, operation, and maintenance of your new earbuds.



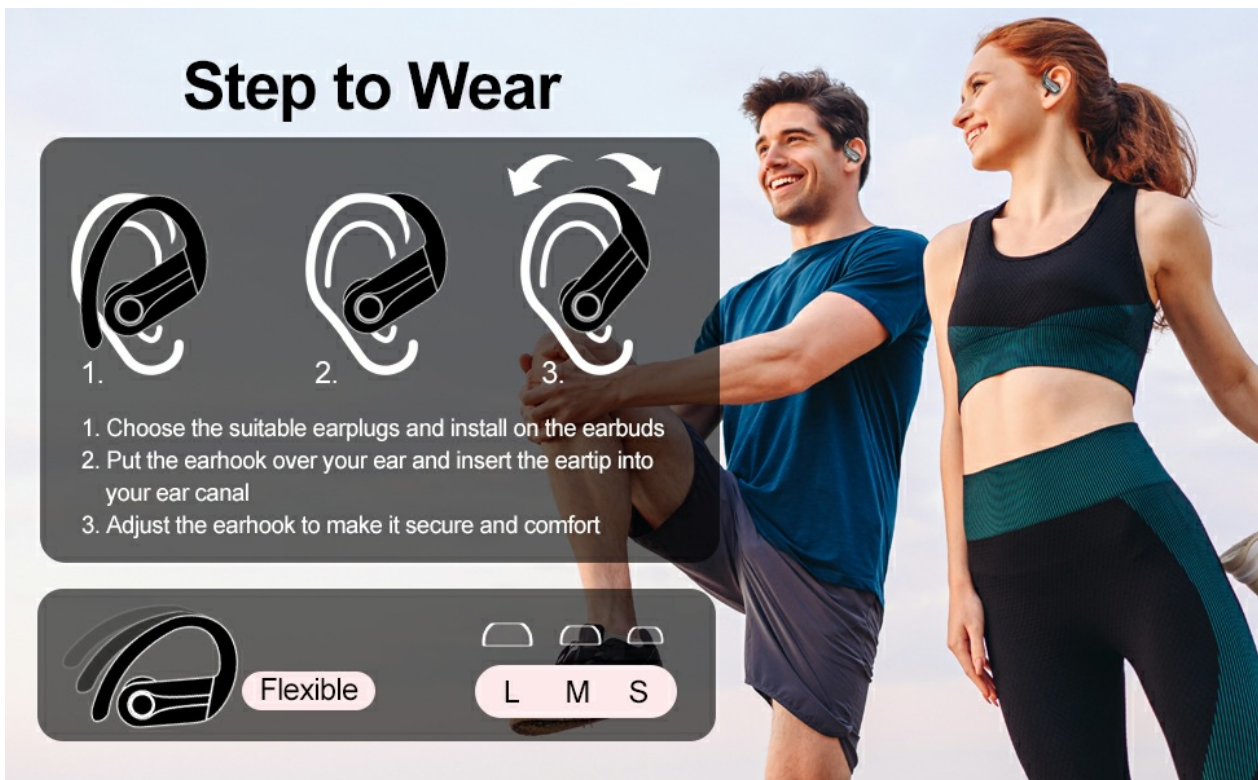
Overview of Jesebang Wireless Earbuds highlighting key features.

## 2. PACKAGE CONTENTS

Please check the package to ensure all items are present:

- Jesebang Wireless Earbuds (Left and Right)
- Charging Case

- USB Charging Cable
- Eartips (S/M/L sizes)
- User Manual



Visual representation of the items included in the product package.

### 3. PRODUCT OVERVIEW

The Jesebang Wireless Earbuds feature an ergonomic design with flexible earhooks for a secure fit, especially during physical activities. The charging case includes a dual LED digital display to show the battery status of both the case and the individual earbuds.



Front view of the Jesebang Wireless Earbuds and charging case.

## Clearer, Acoustic Sound

13 mm speaker nano-scale material, emits a sound closer to the original sound



Detailed view of the earbud's acoustic components and features.

## 4. SETUP

### 4.1 Charging the Earbuds and Case

Before first use, fully charge the earbuds and the charging case. The charging case has a 600mAh battery, providing up to 5 additional charges for the earbuds, totaling up to 50 hours of playtime.

1. Connect the charging cable to the charging port on the case and a USB power source.
2. The LED display on the case will show the charging progress. The number indicates the case's battery percentage, and the LED bars indicate the earbuds' charging status.
3. Once fully charged, the display will show 100 for the case, and the earbud charging bars will fade.

# IP7 Waterproof & Sweatproof



Rainy Day



Sweat Resistance



Splashproof



The dual LED display on the charging case shows battery status.

## 4.2 Pairing with Your Device

The earbuds feature Bluetooth 5.3 for fast and stable transmission.

1. Open the charging case. The earbuds will automatically power on and enter pairing mode.
2. On your device (smartphone, tablet, etc.), enable Bluetooth.
3. Search for "A21" in the list of available Bluetooth devices and select it to connect.
4. Once connected, a voice prompt will confirm successful pairing. The earbuds will automatically reconnect to the last-paired device when taken out of the case.

# Ergonomic Design for Sport

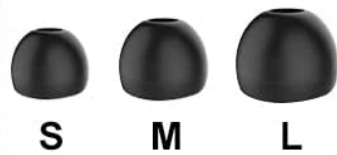
## Flexible Hook



## Secure-fit



## Soft Eartips (S/M/L)



Bluetooth 5.3 ensures stable and fast connection.

## 5. WEARING INSTRUCTIONS

For optimal sound quality and secure fit, follow these steps:

1. **Choose Eartips:** Select the suitable eartips (S/M/L) that provide a comfortable and snug seal in your ear canal.
2. **Position Earhook:** Place the earbud in your ear, then gently loop the earhook over your ear.
3. **Adjust for Comfort:** Adjust the earbud and earhook until it feels secure and comfortable. The flexible earhooks are designed to adapt to your ear shape.

# 50Hrs Playtime & Dual LED Power Display

**7-8hrs**  
Single charge

**50hrs**  
Total



Battery of Charging Case



Power Status of Earbuds

Ergonomic design for a secure and comfortable fit during sports.

## Step to Wear

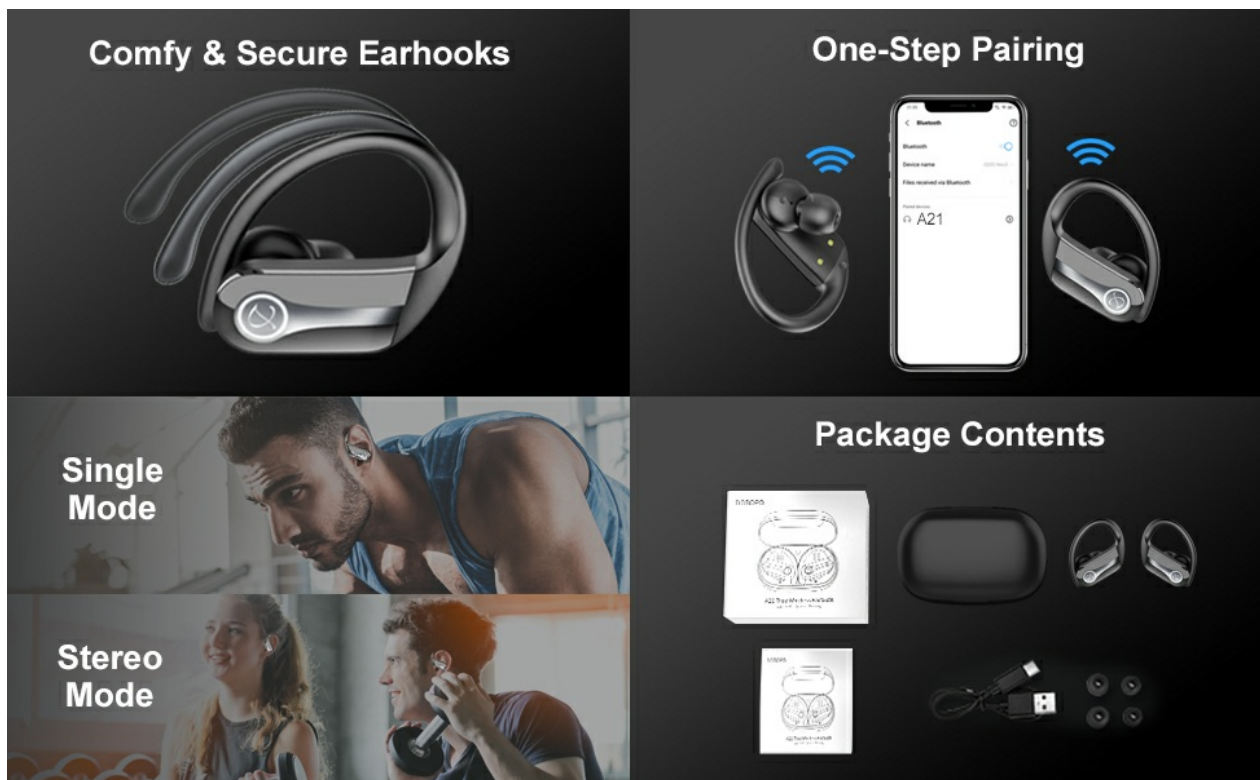


Visual guide for correctly wearing the earbuds.

## 6. OPERATING INSTRUCTIONS (TOUCH CONTROLS)

The Jesebang Wireless Earbuds feature sensitive touch controls on each earbud for easy management of music and calls.

Function	Action
Voice Assistant	Tap (R/L) Earbud Thrice
Play/Pause	Tap (R/L) Earbud Twice
Previous Track	Long Press L Earbud for 2 seconds
Next Track	Long Press R Earbud for 2 seconds
Volume +	Tap R Earbud once
Volume -	Tap L Earbud once
Answer Call	Click Once L/R Earbud
Reject/Hang up Call	Long Press L/R Earbud for 2 seconds



Detailed guide to the smart touch controls.

## 7. MAINTENANCE

To ensure the longevity and optimal performance of your earbuds:

- **Cleaning:** Regularly clean the earbuds and charging case with a soft, dry cloth. Do not use harsh chemicals or abrasive materials.
- **Water Resistance:** The earbuds are IP7 waterproof, meaning they are protected against immersion in water up to 1 meter for up to 30 minutes. They are suitable for workouts, running, and can withstand sweat and rain. However, they are not designed for swimming or prolonged submersion. Ensure the charging port is dry before charging.
- **Storage:** Store the earbuds in their charging case when not in use to protect them and keep them charged.
- **Temperature:** Avoid exposing the earbuds to extreme temperatures (hot or cold) or high humidity.

## Upgraded Bluetooth 5.3

80% more stable than the last generation.



## ENC for Clear Call

ENC noise reduction for clear call and Hi-Fi stereo sound.



The earbuds are IP7 waterproof, suitable for various activities.

## 8. TROUBLESHOOTING

If you encounter any issues with your Jesebang Wireless Earbuds, please refer to the following common solutions:

Problem	Possible Solution
Earbuds not pairing	<ul style="list-style-type: none"><li>◦ Ensure earbuds are charged.</li><li>◦ Turn off Bluetooth on your device and turn it back on.</li><li>◦ Forget "A21" from your device's Bluetooth list and try pairing again.</li><li>◦ Place earbuds back in the case, close, then reopen to reset.</li></ul>

Problem	Possible Solution
<b>Only one earbud working</b>	<ul style="list-style-type: none"><li>◦ Ensure both earbuds are charged.</li><li>◦ Place both earbuds back into the charging case, close the lid, wait a few seconds, then open the lid and take them out together.</li><li>◦ Check if your device is in mono mode.</li></ul>
<b>Low volume or poor sound quality</b>	<ul style="list-style-type: none"><li>◦ Adjust the volume on both your device and the earbuds.</li><li>◦ Ensure eartips are correctly sized and provide a good seal.</li><li>◦ Clean any debris from the earbud speakers.</li></ul>
<b>Charging case not charging</b>	<ul style="list-style-type: none"><li>◦ Check the charging cable and power adapter. Try a different cable or adapter.</li><li>◦ Ensure the charging port is clean and free of debris.</li></ul>
<b>Earbuds not charging in case</b>	<ul style="list-style-type: none"><li>◦ Ensure the charging case has sufficient battery.</li><li>◦ Clean the charging contacts on both the earbuds and inside the case.</li><li>◦ Ensure earbuds are correctly seated in the case.</li></ul>

If the problem persists, please contact customer support for further assistance.

## 9. SPECIFICATIONS

Feature	Detail
<b>Model Name</b>	A21
<b>Connectivity Technology</b>	Wireless (Bluetooth 5.3)
<b>Ear Placement</b>	In Ear with Earhook
<b>Water Resistance Level</b>	IP7 Waterproof
<b>Playtime</b>	Up to 8 hours (single charge), 50 hours (with charging case)
<b>Charging Case Battery</b>	600mAh
<b>Speaker Size</b>	13mm
<b>Frequency Range</b>	16 Hz - 20,000 Hz
<b>Control Method</b>	Touch Control
<b>Microphone</b>	Built-in (ENC Mic for clear calls)
<b>Compatible Devices</b>	iOS or Android smartphones, computer, Laptop, etc.
<b>Item Weight</b>	4.6 ounces


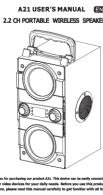

## 10. WARRANTY AND SUPPORT

Jesebang products are manufactured with high quality standards. For any warranty claims or technical support, please refer to the warranty information provided at the time of purchase or contact Jesebang customer service directly. Please have your product model number (A21) and purchase details ready when contacting support.

For further assistance, please visit the official Jesebang website or contact their customer support channels.

© 2024 Jesebang. All rights reserved.

### Related Documents

	<p><a href="#">Jesebang BD86 True Wireless Stereo Earphones User Guide</a></p> <p>User guide for Jesebang BD86 True Wireless Stereo Earphones, covering product specifications, pairing, functions, charging, maintenance, and troubleshooting.</p>
	<p><a href="#">A21 Portable Wireless Speaker User Manual</a></p> <p>User manual for the A21 2.2 CH Portable Wireless Speaker, detailing package contents, technical specifications, product features, operational instructions, and troubleshooting.</p>
	<p><a href="#">A21 GPS Tracker User Manual</a></p> <p>Comprehensive user manual for the A21 GPS tracker, detailing setup, functions, app usage, SMS commands, troubleshooting, and safety guidelines.</p>