

Manuals+

[Q & A](#) | [Deep Search](#) | [Upload](#)

[manuals.plus](#) /

› [TEEHO](#) /

› [TEEHO TE217 WiFi Smart Door Lock User Manual](#)

TEEHO TE217



TEEHO TE217 WiFi Smart Door Lock

USER MANUAL

Introduction

This manual provides comprehensive instructions for the installation, operation, and maintenance of your TEEHO TE217 WiFi Smart Door Lock. Please read this manual thoroughly before installation and use to ensure proper function and safety.

What's Included

Verify that all components are present before beginning installation:

- Exterior Assembly
- Interior Assembly
- Latch
- Mounting Plate
- Backup Keys (2)
- Screws (various sizes)
- AA Lithium Batteries (4)
- Drive-in Collar (Optional)
- Reinforcement Plate (Optional)
- Strike

Setup and Installation

Follow these steps to install your TEEHO TE217 Smart Door Lock. A screwdriver is the only tool required for installation.

1. Prepare the Door

Ensure your door meets the following specifications:

- **Door Thickness:** 1-3/8" to 2" (35mm to 50mm)
- **Door Hole (Diameter):** 1-1/2" or 2-1/8" (38mm or 54mm)
- **Backset:** 2-3/8" or 2-3/4" (60mm or 70mm)
- **Latch Hole:** 1" (25mm) deep

Ensure the hole in the door frame is drilled at least 1" (25mm) deep to allow enough space for the deadbolt to extend. If not, calibration may fail during setup.

Check Compatibility Before Purchase

Easy to install, just need a screwdriver.
Suitable for both left and right doors.

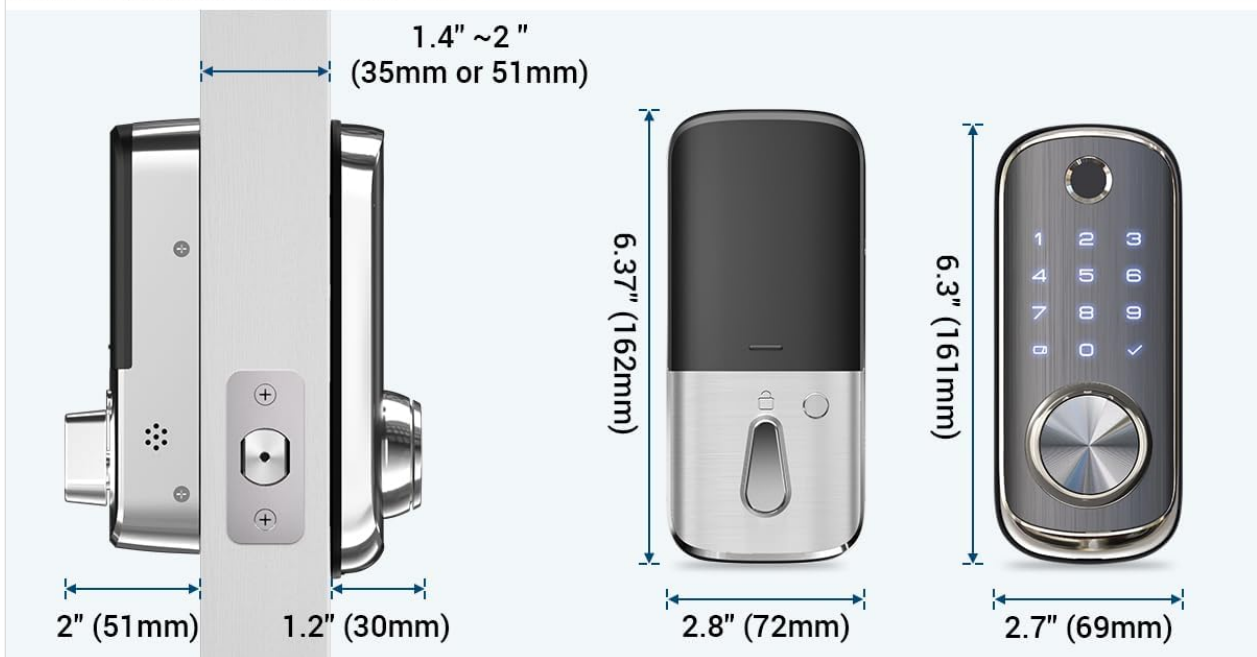
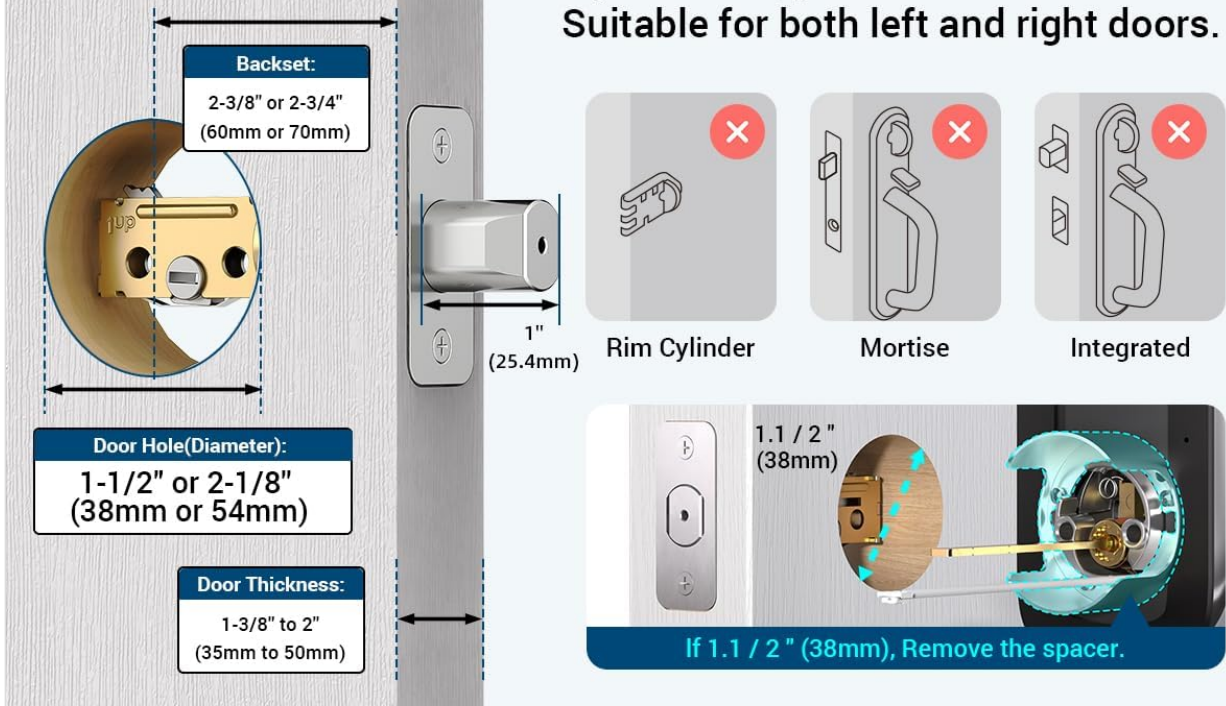


Image: Door dimensions and compatibility check for installation.

2. Install the Latch

Adjust the latch length based on your door's backset (60mm or 70mm). Install the latch horizontally into the door edge. If needed, install the strike plate in the door frame, ensuring the hole is at least 1" (25mm) deep.

3. Install Exterior Assembly

Measure the door hole diameter. If it is 1-1/2" (38mm), remove the spacer from the exterior assembly. Ensure the cable is positioned below the latch and the torque blade is horizontal before inserting the exterior assembly.

4. Install Mounting Plate and Interior Assembly

Secure the mounting plate with screws. Keep the thumb turn on the interior assembly in a vertical position. Firmly connect the cable from the exterior assembly to the connector on the interior assembly. Insert the interior assembly screws to secure it. Load 4 AA batteries into the battery compartment and replace the battery cover.

5. Test the Deadbolt

After installation, test the deadbolt's functionality. It is recommended to use the back of your hand to wake up the keypad. Long press any key on the keypad to lock it. The default master code is 12345678.

Installation Video Guide

Your browser does not support the video tag.

Video: Detailed installation guide for the TEEHO TE217 Smart Lock, covering door preparation, latch installation, and assembly steps.

Operating Your Smart Lock

Unlocking Methods

The TEEHO TE217 offers multiple convenient ways to unlock your door:

- **Fingerprint Recognition:** Place your registered fingerprint on the sensor. The lock boasts a 99% accuracy rate and less than 0.3s recognition time.
- **PIN Code:** Enter your personalized PIN code on the backlit keypad.
- **Physical Key:** Use the provided backup physical keys for traditional unlocking.
- **Mobile App:** Control the lock remotely via the KK Home app.
- **Voice Control:** Integrate with Google Assistant or Amazon Alexa for hands-free unlocking.

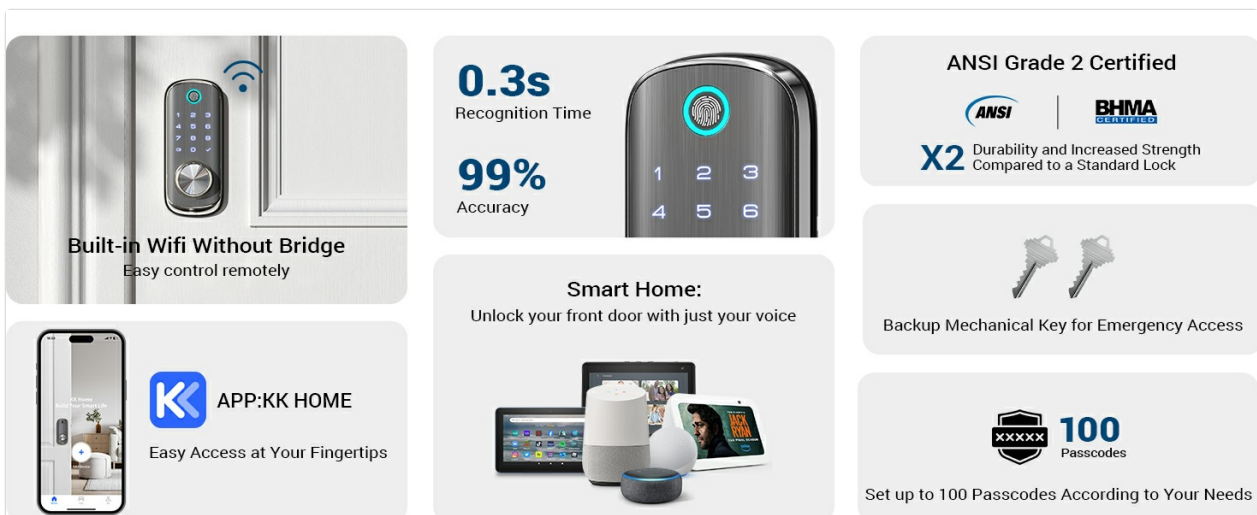


Image: Visual representation of the various unlocking methods available for the smart lock.

App Operation Guide (KK Home App)

The KK Home app provides full control and monitoring of your smart lock. Download the app from the App Store or Google Play.

1. **Pairing Your Lock:** Click 'Add device' or '+' in the app. Scan the QR code located on the back of the battery cover or on the device's body to pair. Ensure Bluetooth is enabled and your phone is close to the

device.

2. **Setting Master Code:** If you have changed the default master PIN code on the lock, enter your new master code in the app.
3. **Wi-Fi Connection:** The lock only works with 2.4GHz Wi-Fi. Find your Wi-Fi network in the list and enter the password.
4. **Naming Your Lock:** After successful Wi-Fi connection, name your lock (e.g., Front Door, Side Door) and complete the setup.

App Features:

- **Activities:** Check unlock, lock, and alert records.
- **Password Management:** Generate 4 different types of passwords (Permanent, Scheduled, Temporary, One-time). Up to 100 passwords can be stored.
- **Fingerprint Management:** Set up and manage fingerprints (if applicable to your product).
- **Settings:** Access basic lock information and customize settings like Auto-Lock (10 seconds to 3 minutes), Duress Warning, Sound Settings, Master Code, Time Settings, Notifications, One-Touch Locking, and Privacy Mode.
- **Share Access:** Share operational rights with family (full permissions) or guests (limited permissions) via email or invitation code. The user must be registered on the KK Home app.

Your browser does not support the video tag.

Video: Comprehensive guide on using the TEEHO TE217 Smart Lock with the KK Home app, including pairing, password management, and settings.

Voice Control Integration (Alexa/Google Assistant)

To enable voice control, ensure your device is properly connected to the KK Home app.

1. **Navigate to Alexa/Google Assistant:** In the KK Home app, go to 'My' > 'Third Party Voice Services' > 'Alexa' or 'Google Assistant'.
2. **Link Account:** Select 'Agree and link' to initiate the linking process. Follow the prompts to link your KK Home account and skill in the Alexa or Google Home app.
3. **Configure Device:** In the Alexa app, locate your device on the 'Home' page or under 'Devices'. Click on the settings icon in the top right corner. Enable 'Unlock by App' and 'Unlock by voice'. Create your voice code as prompted. Once configured, your device is ready for voice control.

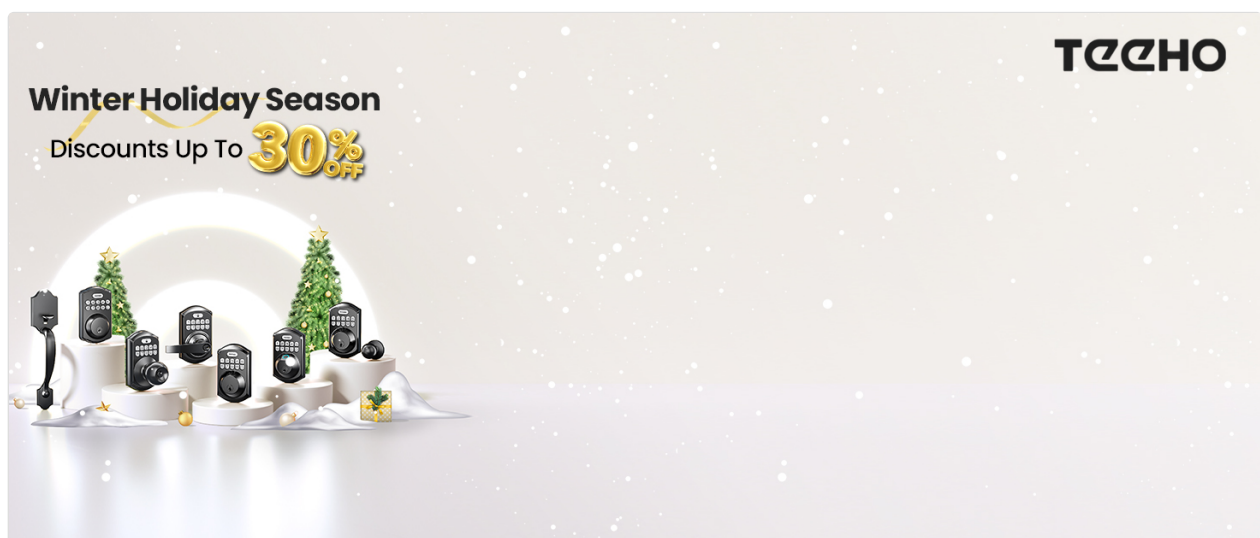


Image: Demonstrates using voice commands with Alexa to control the smart lock.

Maintenance

Battery Management

The TEEHO TE217 is designed for prolonged power efficiency, with a battery life projected to last up to 6 months. The lock includes a low battery indicator to inform you when replacement is needed. Always use 4 AA alkaline batteries and replace all of them at once to ensure optimal performance. In case of complete power loss, a Type-C port is available for emergency power-on using a portable power bank (not included).



Image: Illustrates the battery compartment and recommended AA batteries.

Cleaning

To clean the smart lock, use a soft, damp cloth. Avoid abrasive cleaners or solvents that could damage the finish or electronic components.

Troubleshooting

If you encounter issues with your TEEHO TE217 Smart Door Lock, refer to the following common problems and solutions:

Wi-Fi Connection Issues

1. **Reset the Lock:** Press and hold the reset button for 5 seconds.
2. **Check Bluetooth and Router:** Enable Bluetooth on your phone. Ensure your home Wi-Fi is active and the router is functioning well. The lock should be within 10 meters of the router.
3. **Update App:** Ensure your KK Home app is updated to the latest version.
4. **Check Battery:** Confirm the lock's battery level is over 20%.
5. **Wi-Fi Frequency:** Ensure your Wi-Fi network operates at 2.4GHz, as the lock only supports this frequency.
6. **Connection Cables:** Ensure the connection cables are properly inserted.

Battery Draining Quickly

1. **Check for Misalignment:** Ensure the lock is correctly aligned and the hole depth of the door frame does

not exceed 25mm.

2. **Inspect Connection Wires:** Ensure that the connection wires are correctly installed to prevent any issues with power supply.
3. **Verify Proper Screw Installation:** Check if the lock is securely installed using the provided screws.
4. **Use Alkaline Batteries:** Confirm that you are using the recommended 4 alkaline batteries. Avoid mixing different types of batteries and replace them all at once with new ones when needed.

Lock Not Working

1. **Reset the Lock:** Press and hold the reset button for 5 seconds.
2. **Check Battery Power:** Ensure the lock's battery is over 20%.
3. **Update App and Firmware:** Make sure your smart lock's app and firmware are up to date.
4. **Inspect Connection Wires:** Ensure the connection cables are properly inserted. Try to re-install the door lock.
5. **Replace Batteries:** Replace with brand-new alkaline batteries.

If the issue persists after following these steps, kindly provide the following details via email or phone call for further assistance:

- ESN number.
- User account name for the KK Home App.
- A photo or video of the lock.
- Phone model, system version.
- KK Home App version.

Specifications

Feature	Detail
Brand	TEEHO
Model Name	TE217 Wifi Smart Lock
Lock Type	Biometric, Deadbolt, Keypad
Special Features	Auto-Lock, Back-Lit Keypad, Fingerprint, One-Touch Lock, Passcode Unlock
Material	Zinc alloy exterior keypad, Aluminum alloy interior assembly
Item Dimensions L x W x H	8 x 8 x 4 inches
Item Weight	3.7 pounds (1.68 Kilograms)
Color	Bright Nickell
Finish Type	Nickel
Power Source	4 AA batteries (included)
Connectivity Protocol	Bluetooth, Wi-Fi (2.4GHz only)

Control Method	App, Remote, Touch, Voice
Controller Type	Amazon Alexa, Android, Google Assistant, iOS
Recommended Uses	Residential and smart home access control
Durability Standard	BHMA Grade 2 certified, IP65 Weatherproof

Warranty and Support


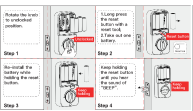


TEEHO provides the following support for your smart lock:

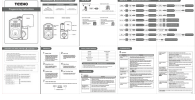

- **30-Day Commitment:** Unconditional commitment within 30 days of purchase.
- **1-Year Exchange:** Complimentary exchange within 1 year for product issues.
- **Customer Service:** Dedicated 24/7 customer service is available for assistance.

For support, please refer to the contact information provided with your product packaging or visit the official TEEHO website.

© 2024 TEEHO. All rights reserved.

Related Documents - TE217

	<p>TEEHO TE012W WiFi Smart Lock User Manual: Setup, App Guide, and Troubleshooting</p> <p>Comprehensive user manual for the TEEHO TE012W smart lock. Learn how to pair the app, set up PIN codes, manage fingerprints, lock/unlock, reset the device, and troubleshoot common issues. Includes programming guide and FAQ.</p>
	<p>TEEHO Smart Lock Reset Guide: Step-by-Step Instructions</p> <p>This guide provides clear, step-by-step instructions for resetting TEEHO keyless entry door locks, including models like TE001 and TE002K. Essential for maintaining your smart lock.</p>
	<p>TEEHO TE002K Fingerprint Door Lock Installation Guide</p> <p>Comprehensive installation instructions for the TEEHO TE002K Fingerprint Door Lock, detailing door preparation, parts identification, and step-by-step assembly for a secure and easy setup.</p>
	<p>TEEHO TE002 Fingerprint Door Lock Installation and Programming Guide</p> <p>Comprehensive guide for installing and programming the TEEHO TE002 Fingerprint Door Lock, covering door preparation, parts identification, installation steps, and various programming functions.</p>

	<p>TEEHO TE001/TE001K Keyless Entry Door Lock Programming Instructions</p> <p>Comprehensive programming instructions for the TEEHO TE001 and TE001K keyless entry door locks, covering installation, usage, feature settings, and troubleshooting.</p>
	<p>TEEHO TE007 Smart Lock Installation and Programming Guide</p> <p>Comprehensive guide for installing and programming the TEEHO TE007 Smart Lock, covering door preparation, assembly, and app usage for keyless entry.</p>