

Oclean Oclean Electric Toothbrush for Adults

Oclean Electric Toothbrush for Adults Instruction Manual

Model: Oclean Electric Toothbrush for Adults

1. PRODUCT OVERVIEW

The Oclean Electric Toothbrush for Adults is a high-performance sonic toothbrush designed for superior oral hygiene. It features a powerful motor, long-lasting battery, multiple cleaning modes, and smart timer functions to provide a comprehensive and personalized brushing experience. This manual provides detailed instructions for its proper use and maintenance.



Image 1: Oclean Electric Toothbrush and included accessories.

2. WHAT'S IN THE BOX

Upon opening your Oclean Electric Toothbrush package, you will find the following components:

- 1 x Oclean Electric Toothbrush Handle
- 6 x Toothbrush Replacement Heads
- 1 x Travel Case
- 1 x USB Charging Cable
- 1 x Instruction Manual (this document)

What's in the Box



Image 2: All components included in the Oclean Electric Toothbrush package.

3. SETUP

1. **Unpack:** Carefully remove all components from the packaging.
2. **Charge Fully:** Before first use, fully charge the toothbrush. Refer to the "Charging" section for detailed instructions.
3. **Attach Brush Head:** Align the brush head with the metal shaft on the toothbrush handle and push down firmly until it clicks into place.

4. CHARGING

The Oclean Electric Toothbrush features convenient USB-C fast charging and an exceptionally long battery life.

- **Charging Port:** The USB-C charging port is located at the bottom of the toothbrush handle, protected by a waterproof cover. Gently open the cover to access the port.
- **Charging Time:** A quick 10-minute charge provides enough power for up to 2 weeks of daily use.
- **Battery Life:** A full charge can last for up to 150 days, making it ideal for travel.

10 Minutes Charge for 2 Weeks Brush

USB-C Fast Charging



1 = 150

full charge

days of use

Image 3: USB-C fast charging capability.



Image 4: Extended battery life of 150 days on a single full charge.

5. OPERATION

Follow these steps for effective brushing with your Oclean Electric Toothbrush:

1. **Prepare:** Wet the toothbrush head and apply a small amount of toothpaste.
2. **Power On:** Press the power button to turn on the toothbrush.
3. **Select Mode:** Press the power button repeatedly to cycle through the 5 available cleaning modes until you find your desired setting.
4. **Brush:** Gently guide the brush head across all surfaces of your teeth. The toothbrush provides 76,000 vibrations per minute for thorough cleaning.
5. **Smart Timer:** Utilize the built-in 2-minute smart timer with 30-second interval reminders to ensure even cleaning across all four quadrants of your mouth.
6. **Power Off:** After brushing, press and hold the power button to turn off the toothbrush.

up to
76,000 vibrations/Min
Superior yet Gentle Cleaning



Image 5: High-frequency vibrations for effective cleaning.

6. BRUSHING MODES

Your Oclean Electric Toothbrush offers 5 distinct brushing modes to cater to various oral care needs:

- **Soft Clean:** Gentle cleaning for sensitive teeth and gums.
- **Daily Clean:** Standard mode for everyday plaque removal.
- **Deep Clean:** Intensive cleaning for stubborn plaque and stains.
- **Whitening:** Designed to help remove surface stains for brighter teeth.
- **Gum Care:** Provides a gentle massage for improved gum health.

5 Brushing Modes

Soft Clean

Daily Clean

Deep Clean

Whitening

Gum Care

oclean



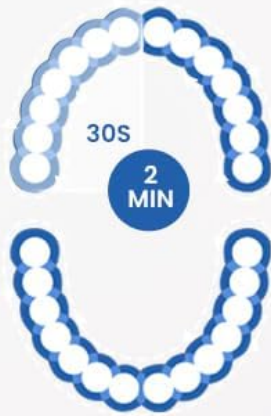
Image 6: Overview of the 5 distinct brushing modes.

7. SMART TIMER

The integrated smart timer ensures you brush for the dentist-recommended 2 minutes, with prompts to guide you through each quadrant of your mouth.

- **2-Minute Timer:** The toothbrush automatically stops after 2 minutes of brushing.
- **30-Second Reminders:** A brief pause or change in vibration will indicate when to move to the next quadrant of your mouth (upper right, upper left, lower right, lower left).

Smart Timer



2 mins
Smart Timer



30s Switch
Brushing Area



Image 7: Smart Timer functionality for optimal brushing.

8. MAINTENANCE

Proper maintenance ensures the longevity and effectiveness of your Oclean Electric Toothbrush.

- **Rinse Brush Head:** After each use, rinse the brush head thoroughly under running water to remove any toothpaste residue and debris.
- **Clean Handle:** Wipe the toothbrush handle with a damp cloth as needed. The toothbrush is IPX7 waterproof, allowing for safe rinsing.
- **Replace Brush Heads:** For optimal cleaning performance and hygiene, replace the toothbrush head every 3 to 6 months, or sooner if the bristles appear frayed.
- **Storage:** When not in use, store the toothbrush in a dry place. Use the provided travel case for convenient and hygienic storage during travel.

Protect Gum & Enamel



'W' Shape,
more fit with teeth



DuPont™ Tynex®
bristles



Image 8: High-density DuPont bristles for effective yet gentle cleaning.

9. TROUBLESHOOTING

If you encounter any issues with your Oclean Electric Toothbrush, please consider the following common solutions:

- **Toothbrush Not Turning On:** Ensure the toothbrush is fully charged. Connect it to the charger and allow sufficient time for charging.
- **Weak Vibrations:** This may indicate a low battery. Recharge the toothbrush. If the issue persists after charging, the brush head might need replacement.
- **Unusual Noise:** Check if the brush head is securely attached. If not, remove and reattach it firmly.
- **Charging Issues:** Ensure the USB-C cable is properly connected to both the toothbrush and a power source. Try a different USB port or adapter.

For further assistance, please contact Oclean customer support.

10. SPECIFICATIONS

Feature	Detail
Brand	Oclean
Model	Oclean Electric Toothbrush for Adults
Power Source	Battery Powered
Special Features	Customizable, Brushing Timer
Item Firmness Description	Soft
Age Range (Description)	Adult
Manufacturer	Shenzhen Yunding Information Technology Co.,Ltd.
Package Dimensions	9.17 x 5.75 x 1.65 inches; 11.36 ounces

11. WARRANTY & SUPPORT

For information regarding product warranty, returns, or technical support, please refer to the official Oclean website or contact the retailer from whom you purchased the product. Keep your proof of purchase for any warranty claims.

Legal Disclaimer: Statements regarding dietary supplements have not been evaluated by the FDA and are not intended to diagnose, treat, cure, or prevent any disease or health condition. This product is an electric toothbrush and not a dietary supplement.



© 2024 Oclean. All rights reserved.

Related Documents - Oclean Electric Toothbrush for Adults

	<p>Dada-Tech DT-22 Sonic Electric Toothbrush User Manual</p> <p>User manual for the Dada-Tech DT-22 sonic electric toothbrush, detailing its features, modes, operation, and care instructions for optimal oral hygiene.</p>
	<p>Philips Sonicare Optimal Clean HX6829/77 Rechargeable Electric Toothbrush - Features & Specifications</p> <p>Discover the Philips Sonicare Optimal Clean HX6829/77 rechargeable electric toothbrush. Features up to 10x more plaque removal, pressure sensor, 2 cleaning modes, and advanced sonic technology for a superior clean.</p>
	<p>Rtauys Electric Toothbrush FAQ</p> <p>Frequently asked questions about the Rtauys Electric Toothbrush, covering returns, replacement brush heads, modes, charging, and bracket installation.</p>



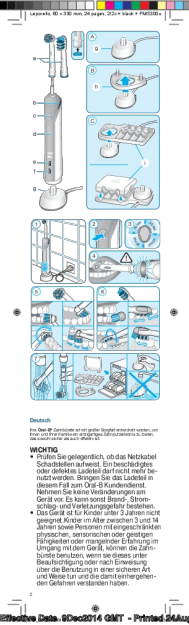
[BAFOVY BF-ET02 Electric Toothbrush User Manual](#)

User manual for the BAFOVY BF-ET02 electric toothbrush, detailing product specifications, safety information, features, brushing modes, maintenance, and troubleshooting.



[COSLUS DY-108Pro Sonic Electric Toothbrush User Manual](#)

Detailed user guide for the COSLUS DY-108Pro Sonic Electric Toothbrush, covering features, operation, charging, maintenance, and safety information for optimal oral hygiene.



[Oral-B Pro 3 TRIZONE 500-5000 Electric Toothbrush User Manual](#)

This user manual provides detailed instructions for the Oral-B Pro 3 TRIZONE electric toothbrush, covering setup, usage, cleaning, and troubleshooting. It includes information on different brushing modes, brush heads, and safety precautions.