

voominhtec PSL-300W3P

# Voominhtec 300W Portable Foldable Solar Panel User Manual

Model: PSL-300W3P

## 1. INTRODUCTION

Thank you for choosing the Voominhtec 300W Portable Foldable Solar Panel. This high-performance solar panel is designed to provide reliable power for your outdoor adventures, off-grid living, and emergency backup needs. Featuring advanced monocrystalline ETFE technology, it offers up to 24% conversion efficiency, IP65 waterproofing, and a durable, foldable design for ultimate portability. This manual provides essential information for the safe and efficient operation of your solar panel.

## 2. SAFETY INSTRUCTIONS

- Do not place the solar panel directly in water or expose it to heavy rain for extended periods, despite its IP65 rating. It is water-resistant, not submersible.
- Avoid dropping or subjecting the solar panel to strong impacts.
- Do not attempt to disassemble, modify, or repair the solar panel yourself. Contact qualified personnel for service.
- Keep the solar panel away from open flames, heat sources, and highly flammable materials.
- Ensure proper ventilation when operating, especially if connecting to a power station that generates heat.
- Handle the panel carefully to avoid damaging the solar cells or wiring.
- Keep out of reach of children.
- Always connect the solar panel to compatible devices and ensure correct polarity.

## 3. PACKAGE CONTENTS

Please check the package to ensure all items are present:

- Voominhtec 300W Foldable Solar Panel
- Solar Connector 4-in-1 Adapter Cable (XT60, DC5525, Anderson, DC7909)



Image: The Voominhtec 300W Foldable Solar Panel shown with its carrying case, 4-in-1 adapter cable, and carabiners.

## 4. SETUP GUIDE

---

Setting up your Voominhtec solar panel is quick and easy. Follow these steps for optimal performance:

1. **Unfold the Panel:** Carefully unbuckle the panel and unfold it completely on a flat surface in direct sunlight.
2. **Adjust Kickstands:** Locate the built-in adjustable kickstands on the back of the panel. Extend them to prop up the panel at an angle that maximizes exposure to the sun. An angle of approximately 70 degrees to the ground is often ideal for direct sunlight.
3. **Connect Cables:** Open the accessory pouch on the back of the panel to access the integrated MC4 cable and the 4-in-1 adapter cable.
4. **Choose Connector:** Select the appropriate connector from the 4-in-1 adapter cable (XT60, DC5525, Anderson, or DC7909) that matches your power station or battery input.
5. **Connect to Device:** Connect the MC4 cable from the solar panel to the 4-in-1 adapter cable, and then connect the



chosen adapter to your compatible power station or battery. Ensure all connections are secure.

Your browser does not support the video tag.

Video: Demonstrates the unfolding, kickstand adjustment, and cable connection process for the Voominhtec solar panel.

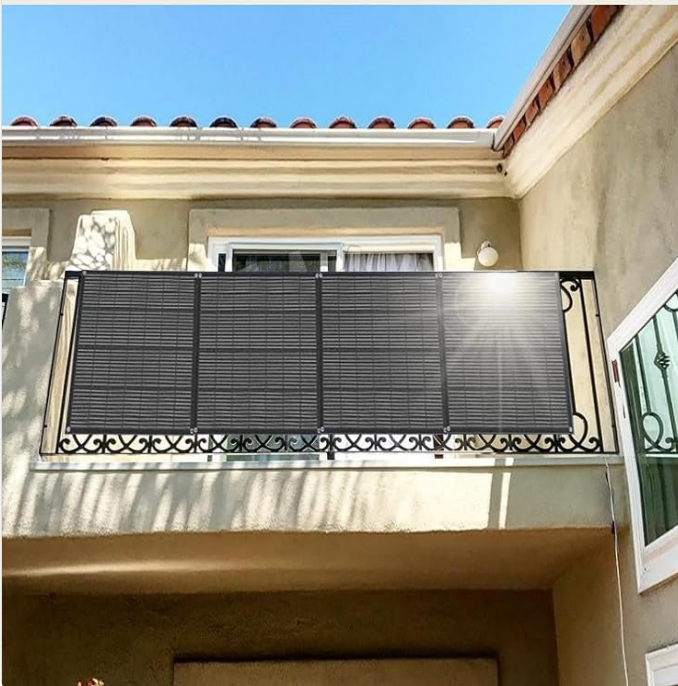


Image: A detailed diagram illustrating how to connect the solar panel to different types of power stations using the included 4-in-1 adapter cable.

## 5. OPERATING INSTRUCTIONS

Once set up, your Voominhtec solar panel will begin converting sunlight into electricity. Here are some tips for optimal operation:

- **Maximize Sunlight Exposure:** Position the panel to receive maximum direct sunlight throughout the day. Adjust its angle periodically as the sun moves across the sky.
- **Clear Obstructions:** Ensure no shadows from trees, buildings, or other objects fall on the panel, as even partial shading can significantly reduce efficiency.

- **Monitor Charging:** Most compatible power stations will display the incoming wattage. Monitor this to ensure the panel is performing as expected.
- **Compatibility:** The panel is widely compatible with most solar generators on the market, including Jackery, Ecoflow, Bluetti, and Anker. For charging 12V/24V batteries (USE, GEL, LI, FLD, SLD), an MPPT controller and alligator clips (not included) are required.

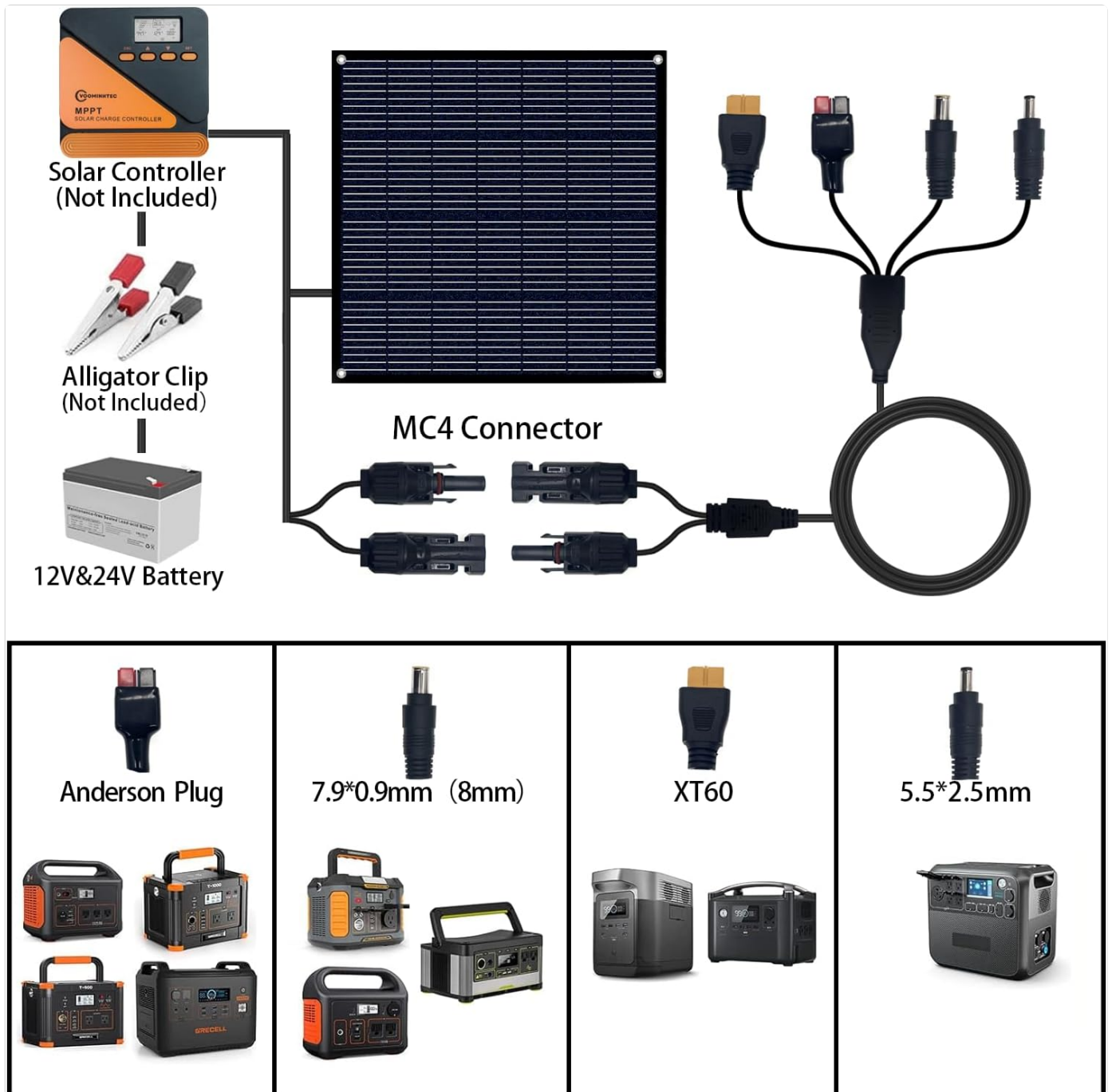


Image: Examples of the solar panel being used in diverse outdoor environments, including camping, with an RV, on a balcony, and on a boat, highlighting its versatility.

## 6. MAINTENANCE

Proper maintenance will ensure the longevity and efficiency of your solar panel:

- **Cleaning:** Regularly wipe the surface of the solar panel with a soft, damp cloth to remove dust, dirt, and debris. Avoid abrasive cleaners or harsh chemicals.
- **Inspection:** Periodically inspect the panel for any visible damage, such as cracks, frayed cables, or loose connections.



- **Storage:** When not in use, fold the panel and secure it with the buckles. Store it in a cool, dry place away from direct sunlight and extreme temperatures.
- **Water Resistance:** The ETFE laminated surface provides IP65 water resistance, protecting against splashes and light rain. However, do not submerge the panel or expose it to prolonged heavy rain.

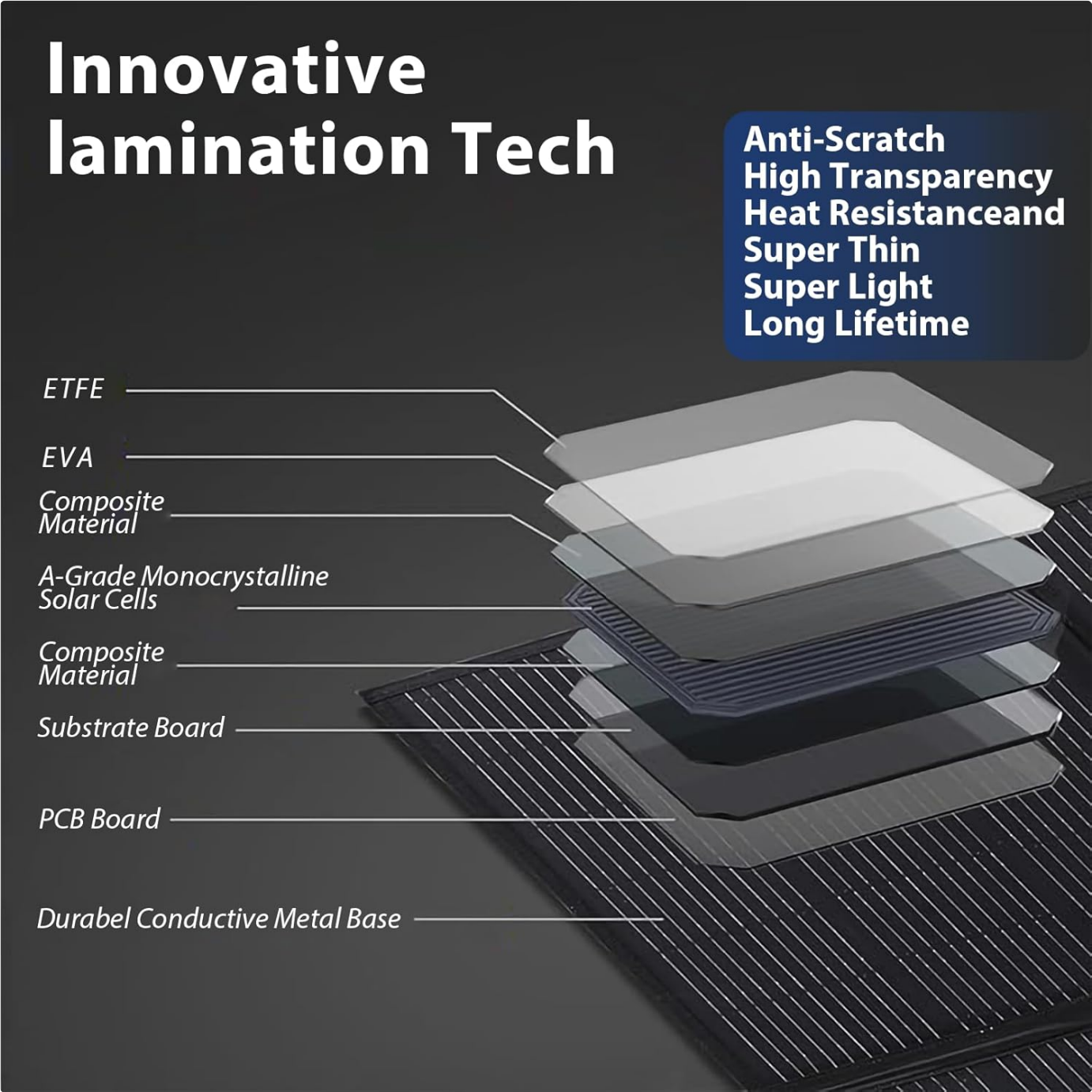


Image: A cross-section diagram detailing the innovative ETFE lamination technology, showing layers like ETFE, EVA, Monocrystalline Solar Cells, and a durable conductive metal base, which contribute to its durability and weather resistance.

## 7. TROUBLESHOOTING

If your solar panel is not performing as expected, consider the following common issues and solutions:

Problem	Possible Cause	Solution
---------	----------------	----------

Problem	Possible Cause	Solution
No power output / Low power output	Insufficient sunlight, partial shading, dirty panel surface, loose connections, incompatible device.	Relocate panel to direct sunlight, remove any shadows, clean the panel surface, check all cable connections, ensure device compatibility.
Panel overheating	Poor ventilation, prolonged exposure to extreme heat without airflow.	Ensure adequate airflow around the panel. If possible, slightly elevate it from the ground.
Physical damage	Impact or improper handling.	Discontinue use if significant damage is present. Contact customer support for assistance.

If the issue persists after trying these steps, please contact Voominhtec customer support.

## 8. SPECIFICATIONS

Feature	Detail
Brand	Voominhtec
Model	PSL-300W3P
Maximum Power	300 Watts
Efficiency	Up to 24%
Material	ETFE, Monocrystalline Silicon, Rubber, Oxford, TCPC
Product Dimensions (Unfolded)	30.7"L x 27.3"W x 2"H
Folded Size	30.7*27.3*2in (Note: This appears to be the same as unfolded in the provided data.)
Item Weight	17.4 Pounds
Maximum Voltage	21.6 Volts
AC Adapter Current	18.3 Amps
Connector Type	DC5525, Anderson, DC7909, XT60, MC4
Waterproof Rating	IP65
Special Features	Portable, Flexible, Foldable Kickstand

## 9. WARRANTY AND SUPPORT

Voominhtec is committed to providing high-quality products and excellent customer service. For warranty information, technical support, or any questions regarding your solar panel, please contact Voominhtec customer support directly through the retailer's platform or the official Voominhtec website.

Please have your product model number (PSL-300W3P) and purchase details ready when contacting support.

