

HITSLAM HIT-ZJJ-FG-YH-2P-CA-B

HITSLAM Matte Black Toilet Paper Roll Holder User Manual

Model: HIT-ZJJ-FG-YH-2P-CA-B

1. INTRODUCTION

Thank you for choosing the HITSLAM Matte Black Toilet Paper Roll Holder. This manual provides detailed instructions for the proper installation, operation, and maintenance of your new product. Please read this manual thoroughly before installation and retain it for future reference.

Safety Information

- Always wear appropriate safety gear, such as safety glasses, during installation.
- Ensure the mounting surface is suitable and can support the weight of the holder and a full toilet paper roll.
- Keep small parts and tools out of reach of children.
- If you are unsure about any installation step, consult a qualified professional.

2. PACKAGE CONTENTS

Please verify that all components listed below are included in your package:

- Toilet Paper Holder (1 unit)
- Installation Manual (1 unit)
- Hardware Fittings Pack (screws, wall anchors, hex key)



Image 2.1: Hardware Fittings Pack. This image displays the screws, wall anchors, and hex key included for installation.

3. PRODUCT SPECIFICATIONS

Key specifications for the HITSLAM Toilet Paper Roll Holder:

| | |
|--------------------|------------------------------------|
| Brand | HITSLAM |
| Material | SUS 304 Stainless Steel |
| Finish Type | Matte Black |
| Color | Black |
| Installation Type | Wall Mounted |
| Product Dimensions | 5.51"L x 1.89"W (140mm L x 48mm W) |

| | |
|-------------|------------|
| Shape | Square |
| Item Weight | 8.1 ounces |



Image 3.1: Product Dimensions. This diagram provides detailed measurements of the toilet paper holder and the recommended drill bit size for installation.

4. INSTALLATION INSTRUCTIONS

Follow these steps carefully for a secure and stable installation.

Tools Required (Not Included):

- Pencil
- Drill
- Hammer

- Measuring Tape
- Level

Step-by-Step Guide:

1. **Choose Location:** Select a suitable wall location for the toilet paper holder. Ensure it is at a comfortable height and accessible. Use a level to ensure the placement is straight.
2. **Mark Drill Holes:** Disassemble the mounting plate from the holder. Place the mounting plate against the wall at your desired location. Use a pencil to mark the positions of the two screw holes.
3. **Drill Holes:** Using a drill with a 5mm (7/32 inch) drill bit, carefully drill holes at the marked positions. The depth should be sufficient for the wall anchors.
4. **Insert Wall Anchors:** Gently tap the plastic wall anchors into the drilled holes with a hammer until they are flush with the wall surface.
5. **Mount Bracket:** Align the mounting plate with the inserted wall anchors. Insert the screws through the mounting plate and into the wall anchors. Tighten the screws firmly with a screwdriver until the plate is securely fastened to the wall.
6. **Secure Holder:** Place the main toilet paper holder body onto the mounted plate. The holder has a unique slot design to prevent rotation. Use the provided hex key to tighten the small set screw located on the underside of the holder, securing it firmly to the mounting plate.
7. **Test Stability:** Gently pull on the installed holder to ensure it is stable and does not wobble.

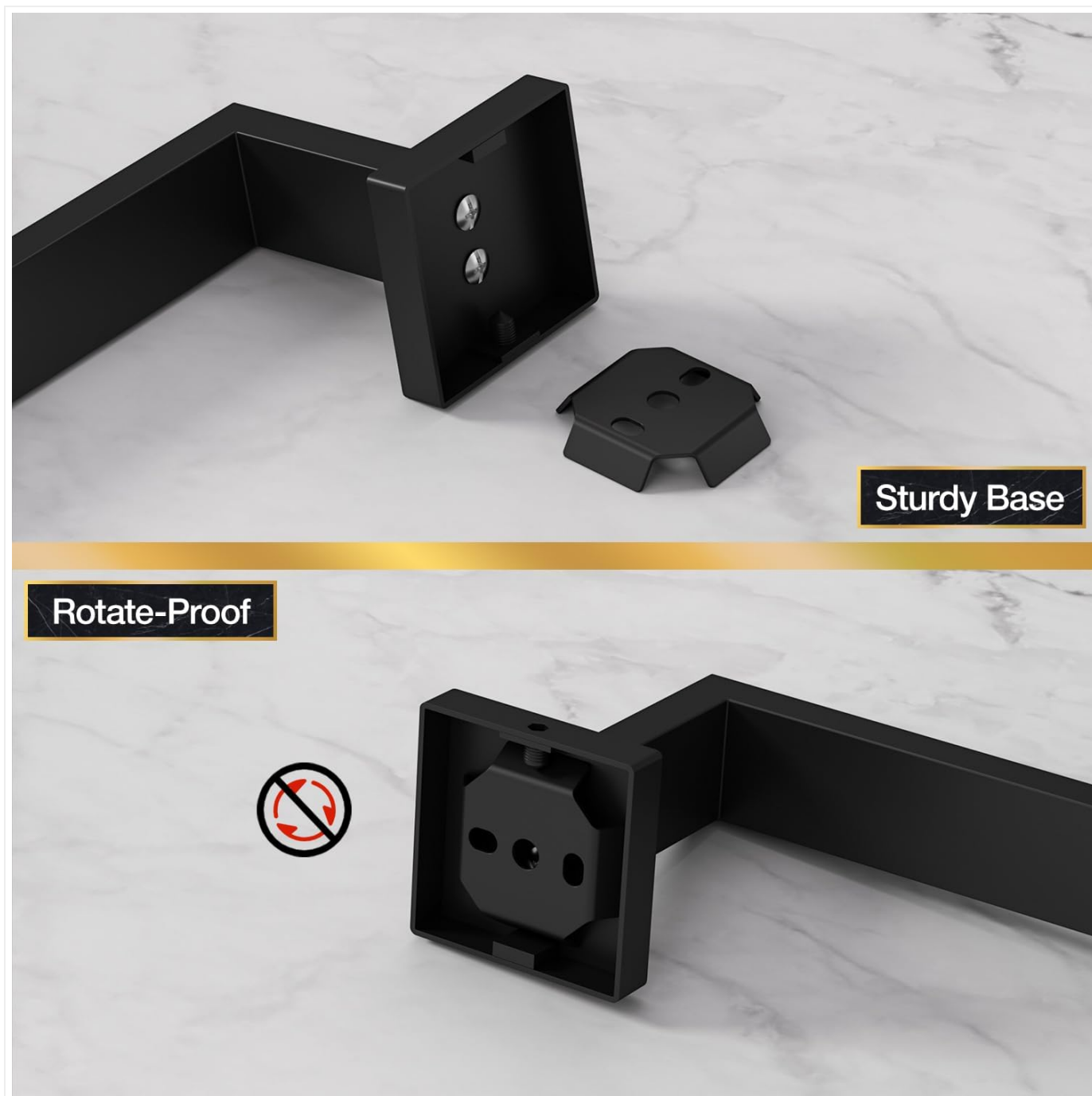


Image 4.1: Mounting Plate Detail. This image shows the sturdy base and rotate-proof mechanism of the mounting plate.

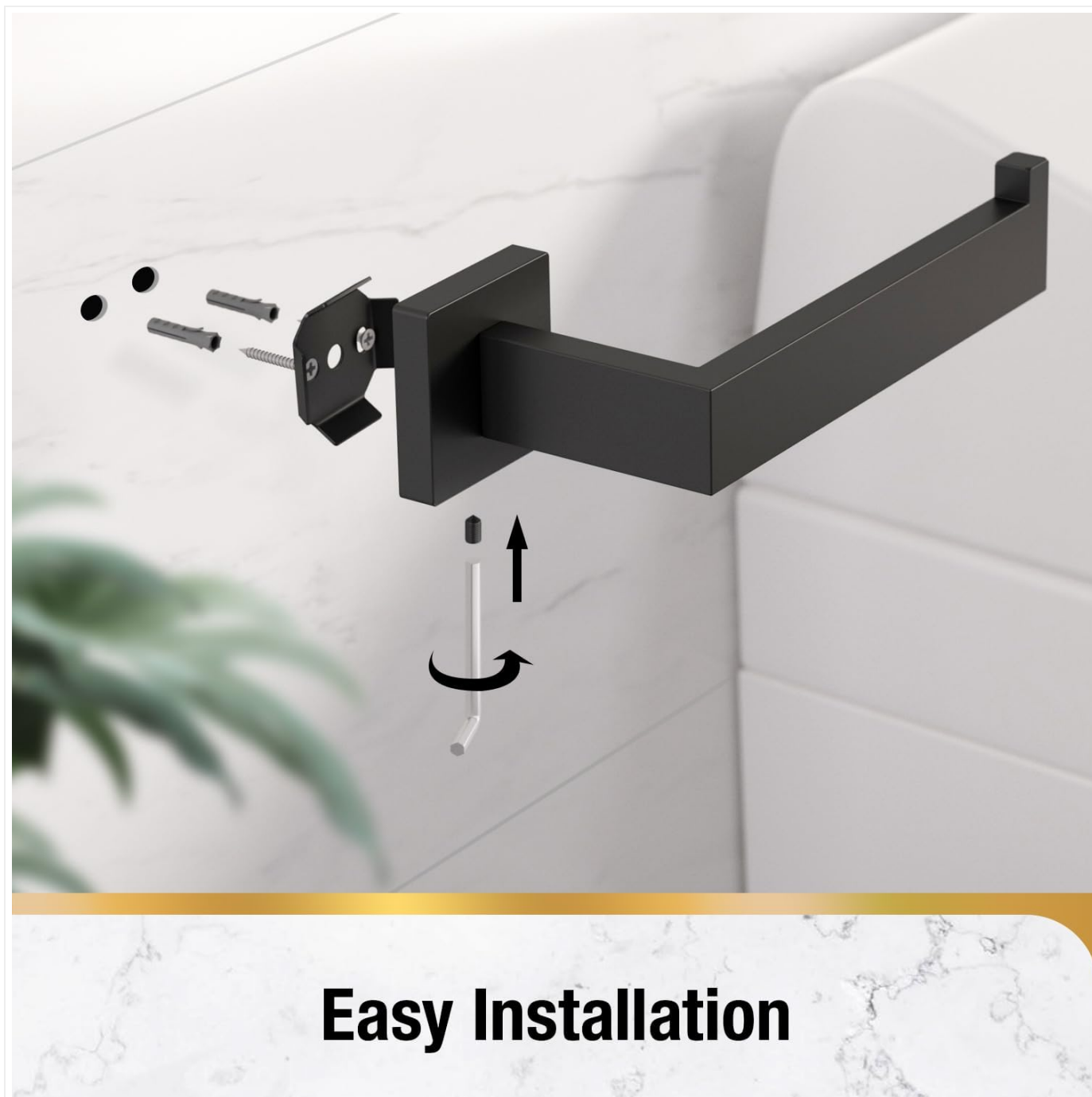
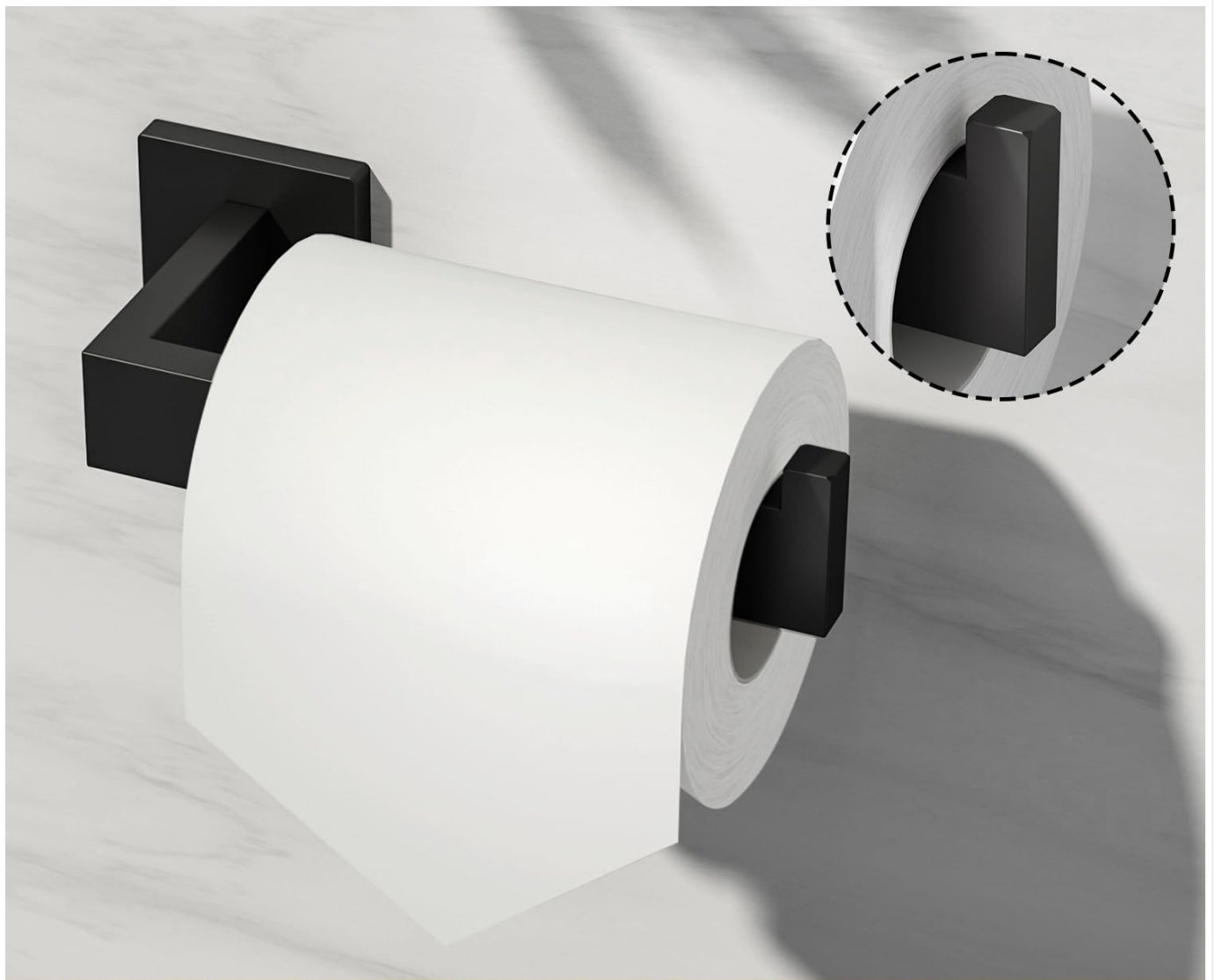


Image 4.2: Easy Installation Steps. This diagram illustrates the process of attaching the holder to the wall using screws and the hex key.

5. OPERATING INSTRUCTIONS

Using your HITSLAM Toilet Paper Roll Holder is straightforward:

- To load a new toilet paper roll, simply slide the roll onto the horizontal bar of the holder.
- The design ensures the toilet paper roll remains securely in place and prevents it from falling off during use.



Prevents Toilet Paper From Falling

Image 5.1: Preventing Roll Falls. This image demonstrates how the holder's design keeps the toilet paper roll secure.



Image 5.2: Reasonable Spacing. This image highlights the adequate space provided for smooth rotation of the toilet paper roll.

6. MAINTENANCE AND CARE

To maintain the appearance and longevity of your toilet paper holder:

- Clean regularly with a soft, damp cloth.
- Avoid using abrasive cleaners, harsh chemicals, or scouring pads, as these can damage the matte black finish and stainless steel.
- Dry the holder thoroughly after cleaning to prevent water spots.



Image 6.1: Quality Materials. This close-up shows the SUS304 Stainless Steel construction and matte black finish, highlighting its rust-proof and anti-corrosion features.

7. TROUBLESHOOTING

If you encounter any issues, refer to the following common problems and solutions:

- **Problem:** The toilet paper holder feels wobbly after installation.
Solution: Ensure all screws, especially the small set screw on the underside of the holder, are tightened securely. Recheck the wall anchors for proper seating. If the wall material is weak, consider using stronger anchors.
- **Problem:** The toilet paper roll does not spin smoothly.
Solution: Check for any obstructions. Ensure the roll is properly centered on the bar. The design provides 2.5 inches of spacing, which should accommodate most standard rolls.
- **Problem:** The finish appears dull or has water spots.
Solution: Clean the holder with a soft, damp cloth and dry immediately. Avoid using harsh chemicals. For stubborn water spots, a mild vinegar solution followed by thorough rinsing and drying may help.


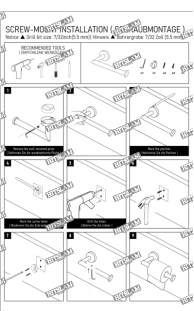


8. WARRANTY AND SUPPORT

HITSLAM products are manufactured to high-quality standards. This product is designed for durability and resistance to rust and corrosion under normal bathroom conditions.

For warranty claims or technical support, please contact HITSLAM customer service through the retailer where the product was purchased or visit the official HITSLAM website for contact information.

© 2025 HITSLAM. All rights reserved.

Related Documents - HIT-ZJJ-FG-YH-2P-CA-B

| | |
|---|--|
|  | <p>HITSLAM Toilet Paper Holder Installation Guide</p> <p>Step-by-step installation instructions for the HITSLAM Matte Black Toilet Paper Holder, including warnings and recommended tools. Learn how to securely mount your SUS 304 stainless steel toilet roll holder.</p> |
|  | <p>HITSLAM Toilet Paper Holder - Screw Mount Installation Guide</p> <p>Comprehensive installation guide for the HITSLAM Toilet Paper Holder. This document provides step-by-step instructions for screw-mounting the SUS 304 Stainless Steel bathroom accessory, including recommended tools and safety precautions.</p> |
|  | <p>HITSLAM Bluetooth Remote Control User Manual for iOS and Android</p> <p>User manual for the HITSLAM Bluetooth remote control, detailing its specifications, features, and operation for iOS and Android devices. Includes compatibility, range, battery life, and dimensions.</p> |
|  | <p>Bobrick B-6999/B-69997 Surface-Mounted Double-Roll Toilet Tissue Dispenser Technical Data Sheet</p> <p>Get detailed technical specifications, materials, installation instructions, and dimensions for the Bobrick B-6999 and B-69997 surface-mounted double-roll toilet tissue dispensers with hoods.</p> |