

Yakima 8002139

Yakima Highroad Rooftop Upright Bike Mount Instruction Manual

Model: 8002139

INTRODUCTION

This manual provides essential instructions for the proper installation, operation, and maintenance of your Yakima Highroad Rooftop Upright Bike Mount. Please read all instructions carefully before use to ensure safe and efficient transportation of your bicycle.

SAFETY INFORMATION

- Always ensure the bike mount is securely attached to your vehicle's crossbars before loading a bicycle.
- Verify that the bicycle is properly secured in the mount before driving.
- Adhere to the maximum load capacity specified in the 'Specifications' section.
- Regularly inspect the mount for any signs of wear, damage, or loose components.
- Be aware of the increased vehicle height and width when the mount and bicycle are installed, especially when entering garages, drive-thrus, or low-clearance areas.
- Drive cautiously and adjust driving speed according to road conditions and wind.

SETUP AND INSTALLATION

The Yakima Highroad mount is designed for tool-free installation on most roof racks with a crossbar spread between 18 and 40 inches.

1. Attaching the Mount to Crossbars

1. Position the Highroad mount on your vehicle's crossbars. Ensure the mount is centered and aligned properly.
2. Utilize the universal hardware to secure the mount to the crossbars. Tighten all fasteners until the mount is firmly in place.



Image: The Yakima Highroad bike mount securely attached to a vehicle's roof rack, ready for bicycle loading.

2. Securing the Mount Components

- **TorqueRight Knob:** This integrated knob allows for precise and secure tightening of the front wheel hoop. Turn the knob until you hear a click, indicating optimal torque.
- **TailWhip Cable:** Use the TailWhip cable to further secure the bike and mount to your roof rack, providing an additional layer of stability.
- **ZipStrip:** The ZipStrip is used to firmly secure the bike's rear wheel to the rack arm.



① Integrated TorqueRight Knob Quickly and Easily Secures the Bike with Precision

② TailWhip Cable to Secure your Bike and Mount to your Roof Rack

③ ZipStrip Secure the Bike's wheel Rim to the Rack Arm, Holding it firmly in Place

④ No Wheel Removal, no Frame for Carbon Bikes and Custom Paint

Image: Detailed view of the TorqueRight Knob for front wheel security, the TailWhip cable for additional rack security, and the ZipStrip for the rear wheel.

OPERATING INSTRUCTIONS

1. Loading a Bicycle

1. Lift the bicycle onto the Highroad mount. The mount accommodates bike wheelbases up to 52 inches and tires from 23mm to 4.0 inches without adjustment.
2. Position the front wheel into the front hoop.
3. Engage the TorqueRight Knob to secure the front wheel. Turn until a click is heard.
4. Secure the rear wheel using the ZipStrip, ensuring it is tight against the rack arm.
5. For enhanced security, utilize the TailWhip cable to connect the bike to the rack.

The Highroad mount secures the bike by the wheels, avoiding contact with the frame. This design is ideal for carbon fiber bikes and custom paint finishes.

YAKIMA®

HighRoad

Premium Rooftop Upright Bike Mount



Aerodynamic Design

Accommodates bike wheelbases up to 52"



Secure Transport

Add SKS locks (sold separately) to secure bike and rack



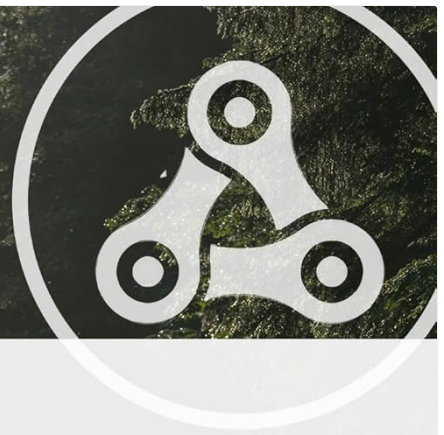
Crossbar Compatible

Fits 26–29" wheels and 23mm–4.0" tires with no adjustment needed



Image: A bicycle mounted on the Yakima Highroad, showcasing its aerodynamic design and secure wheel-based attachment.

YAKIMA®



HIGHROAD

Premium Rooftop Upright Bike Mount

**Minimum
Crossbar Spread**
18"

**Maximum
Crossbar Spread**
40"

**Road Tested
and Approved**
45 lbs. per Bike

**Off-Road
Rated**
27 lbs. per Bike

57.5" L x 9.5" W x 4.5" H



18 lbs.

SKS keys and cores sold separately

Image: A person demonstrating the process of loading a bicycle onto the Yakima Highroad rooftop mount.

2. Unloading a Bicycle

1. Release the TailWhip cable.
2. Unfasten the ZipStrip from the rear wheel.
3. Loosen the TorqueRight Knob to release the front wheel.
4. Carefully lift the bicycle off the mount.

MAINTENANCE

- **Cleaning:** Clean the mount regularly with mild soap and water. Avoid harsh chemicals that may damage the finish or components.
- **Inspection:** Periodically check all bolts, straps, and moving parts for tightness and wear. Replace any worn or damaged components immediately.
- **Storage:** When not in use for extended periods, consider removing the mount from your vehicle and storing it in a dry, protected area to prolong its lifespan.

- **Security:** For added security, SKS Locks (sold separately) can be integrated into the mount.

TROUBLESHOOTING

- **Bike not secure:** Ensure the TorqueRight Knob is tightened until it clicks, and the ZipStrip is firmly secured around the rear wheel. Check that the TailWhip cable is properly engaged.
- **Mount not fitting crossbars:** Verify that your crossbar spread is within the specified range of 18 to 40 inches. Ensure all universal hardware is correctly installed and tightened.
- **Unusual noise during travel:** Re-check all attachment points for tightness. Ensure the bicycle is properly secured and not shifting.

If you encounter issues not covered here, please contact Yakima customer support for assistance.

SPECIFICATIONS

Feature	Specification
Model Number	8002139
UPC	736745021399
Load Capacity (Road Tested)	45 lbs per bike
Load Capacity (Off-Road Rated)	27 lbs per bike
Dimensions (L x W x H)	57.5" x 9.5" x 4.5"
Mount Weight	18 lbs
Minimum Crossbar Spread	18 inches
Maximum Crossbar Spread	40 inches
Wheelbase Compatibility	Up to 52 inches
Tire Compatibility	23mm - 4.0 inches
Mounting Type	Rooftop, Upright
Automotive Fit Type	Universal Fit

YAKIMA®



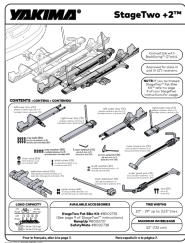
Easy, Secure Bike Transport — The Ultimate Hitch Bike Rack

Image: Visual representation of the Yakima Highroad mount's dimensions, weight, and load capacities for both road and off-road use.

WARRANTY AND SUPPORT

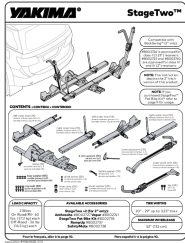
For warranty information, product registration, or technical support, please visit the official Yakima website or contact their customer service department. Keep your purchase receipt as proof of purchase.

Online Resources: For additional guides, FAQs, and product videos, please visit the [Yakima Brand Store](#).



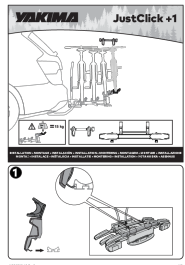
[Yakima StageTwo +2™ Hitch Bike Rack: Installation and User Guide](#)

Comprehensive guide for installing and using the Yakima StageTwo +2 hitch-mounted bicycle rack. Includes parts list, load capacity, installation steps, safety checks, and important warnings.



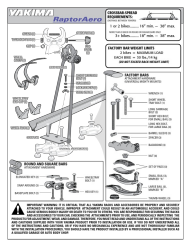
[Yakima StageTwo Hitch Mount Bike Rack Installation and Use Guide](#)

Comprehensive guide for installing, loading, and using the Yakima StageTwo hitch mount bike rack. Includes safety checks, maintenance, and optional adjustments for optimal bike transport.



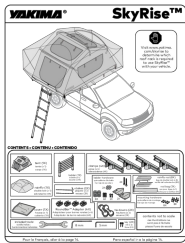
[Yakima JustClick +1 Bike Rack Installation Guide](#)

Step-by-step installation instructions for the Yakima JustClick +1 bike rack, including weight limits and important safety information. Learn how to securely attach your bikes.



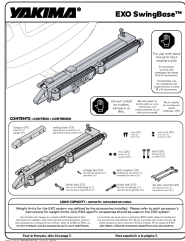
[Yakima RaptorAero Bike Rack Installation Guide](#)

Comprehensive installation instructions for the Yakima RaptorAero bike rack, covering setup for various crossbar types, bike loading, securing, and maintenance.



[Yakima SkyRise™ Rooftop Tent Installation and User Manual](#)

Comprehensive guide for installing, using, and maintaining the Yakima SkyRise™ rooftop tent, including safety warnings, fit information, assembly steps, and care instructions.



[YAKIMA EXO SwingBase Installation and Operation Guide](#)

Comprehensive guide for installing, operating, and maintaining the YAKIMA EXO SwingBase. Includes step-by-step instructions, safety warnings, and recommended accessories.