

[Manuals.plus](#) /

› [EIBOS](#) /

› EIBOS Polyphemus 3D Printer Filament Dryer Box User Manual

EIBOS Polyphemus

EIBOS Polyphemus 3D Printer Filament Dryer Box User Manual

Model: Polyphemus | Brand: EIBOS

1. PRODUCT OVERVIEW

The EIBOS Polyphemus is an advanced 3D printer filament dryer box designed to maintain optimal filament conditions for high-quality 3D printing. It features automatic 360° rotation, precise humidity and temperature control, and a large capacity for various spool sizes and filament types.

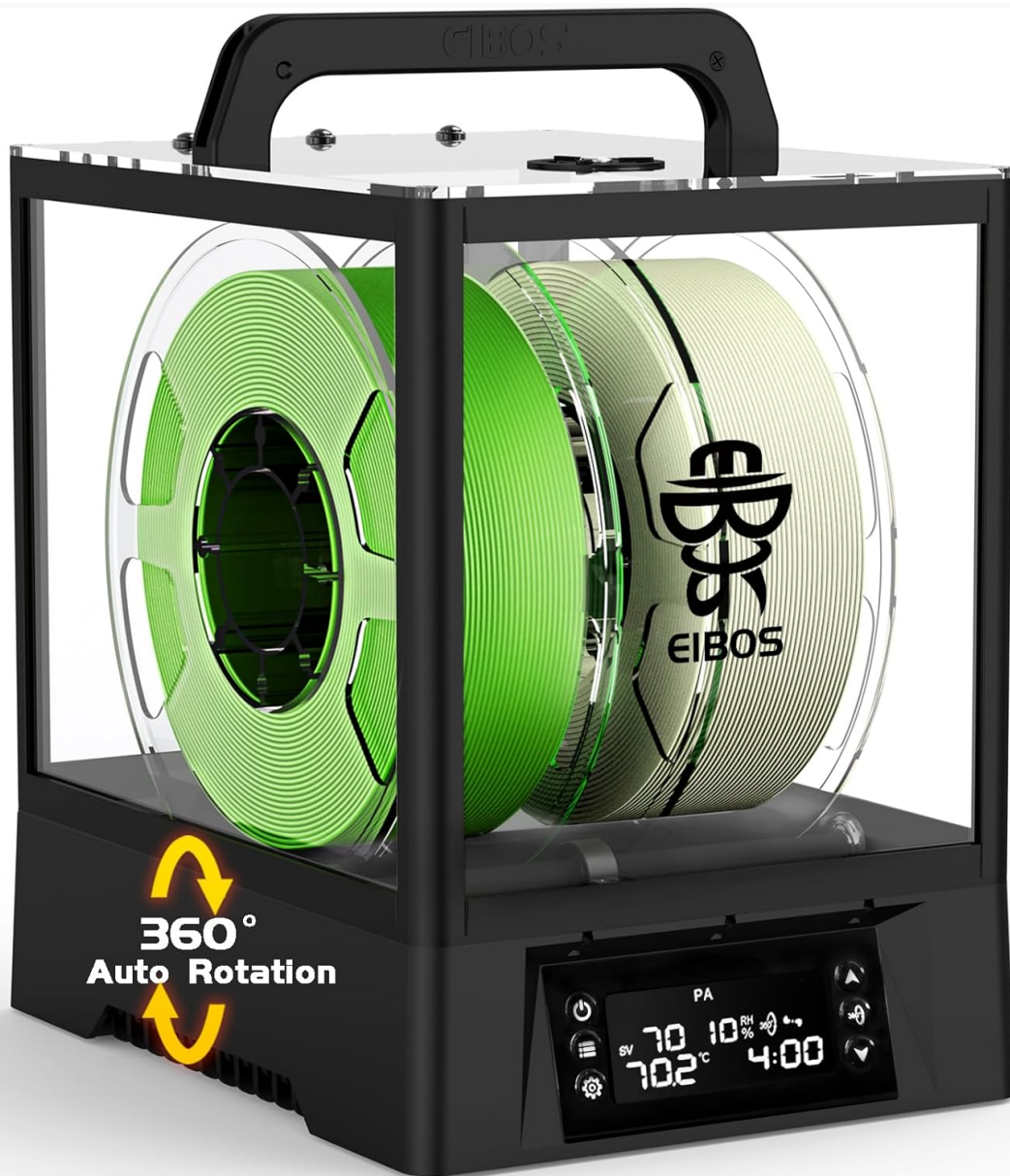


Figure 1: EIBOS Polyphemus Filament Dryer Box with two spools inside, highlighting the 360-degree auto-rotation feature.

Key Features:

- **Automatic 360° Rotation:** A geared motor ensures even heating by automatically rotating the filament spool, eliminating temperature variations.
- **Large Capacity:** Accommodates two 1kg spools (210x170mm) or one large 3kg spool (250x170mm) with an included extension kit.
- **Automatic Humidity & Temperature Control:** Maintains a set relative humidity level and offers temperature control from 20°C to 80°C.
- **Efficient Heating System:** Utilizes a 130W PTC heater and forced hot-air circulation with 8 vents for safe, environmentally friendly, and quiet operation (35-36 dB).
- **Storage Box & Spool Holder:** Features an adjustable exhaust vent for storage, two desiccant compartments, and small plugs for sealed, dust-proof protection.

2. SETUP

2.1 Unboxing and Packing List

Carefully unpack all components and verify against the packing list below:

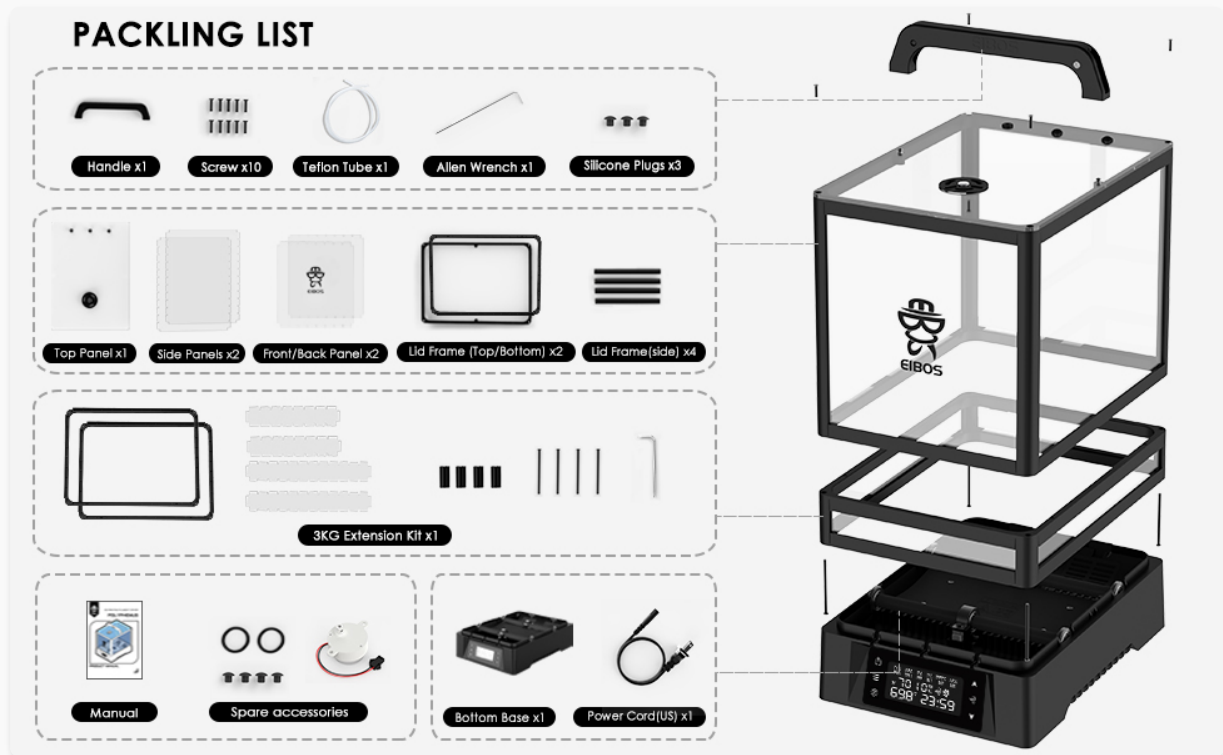


Figure 2: Detailed packing list and component overview.

2.2 Assembly Procedure

Follow these steps to assemble your Polyphemus filament dryer:

1. Assemble the transparent panels to form the main chamber.
2. Attach the top lid and handle securely.
3. Place the assembled chamber onto the bottom base, ensuring it aligns correctly with the heating and rotation mechanisms.
4. If using for 3KG spools, install the extension kit between the base and the chamber.

ACCESSORIES INSTALLATION PROCEDURE

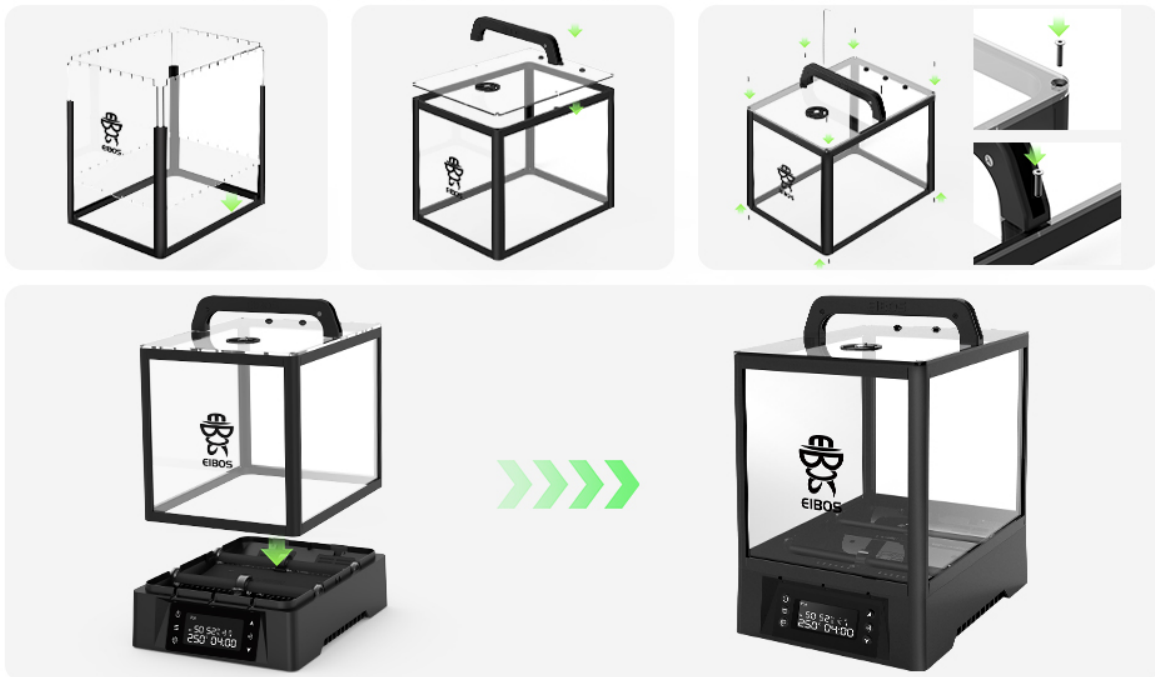


Figure 3: Visual guide for dryer assembly.

2.3 Loading Filament

Open the top lid and place your filament spool(s) onto the rollers inside the chamber. Ensure the filament unwinds smoothly. For optimal drying, remove the magnetic plates from the bottom of the removable boxes to allow warm air circulation during drying. Reattach them for sealed storage.

3. OPERATING INSTRUCTIONS

3.1 Control Panel Overview

The dryer features an intelligent built-in LCD interface for easy control and monitoring. All setting parameters are clearly indicated on the screen.



Simply activate the humidity mode by pressing the ON/OFF button once for keeping the filament inside the chamber at a certain relative humidity level

INTELLIGENT BUILT-IN LCD INTERFACE

Preset time and temperature configurations tailored for various filaments are offered, the parameters set last time can be automatically memorized, and will not be affected by power loss, drying temp ranges from 30-70°C, heating time can be set from 0.5h-24h or even unlimited

Humidity ----- Rotation
Filament Type ----- Heating Level
ON-OFF Button ----- Increase Button
Option Button ----- Rotate Button
Setting Button ----- Decrease Button
Temperature °C/°F ----- Count Down



Figure 4: Intelligent Built-in LCD Interface.

3.2 Setting Drying Parameters

The dryer offers preset time and temperature configurations for various filaments. You can also customize settings.

- **Filament Type Selection:** Choose from predefined modes for PLA, ABS, PETG, PA, TPU, PC, ASA, PVA, PP, or use custom settings (M1, M2, M3).
- **Temperature Range:** Adjustable from 20°C to 80°C.
- **Drying Time:** Default settings from 30 minutes to 24 hours, or set to unlimited.
- **Automatic Rotation:** Activate the rotating mode for 360° surround heating, especially when not actively printing.
- **Automatic Humidity Hold:** Activate the humidity mode to maintain a certain relative humidity level, keeping filament ready for use.

EXTRA LARGE CAPACITY FOR 99% of 3KG FILAMENT

enlarge filament dryer with the extra 3KG expansion kit, saving your time and energy for changing different spools

1KG x2

3KG



Figure 5: Recommended Optimal Setting Time & Temperature.

3.3 Printing While Drying

The Polyphemos is designed with 8 vents (2 in the back, 3 in the front, and 3 on the top) to allow filament feeding from multiple directions, enabling direct printing from the dryer.

STORAGE AFTER DRYING

filament can be stored with vent off, desiccant compartments ensure lasting dryness. Small plugs seal for better storage as well as dust-proof protection

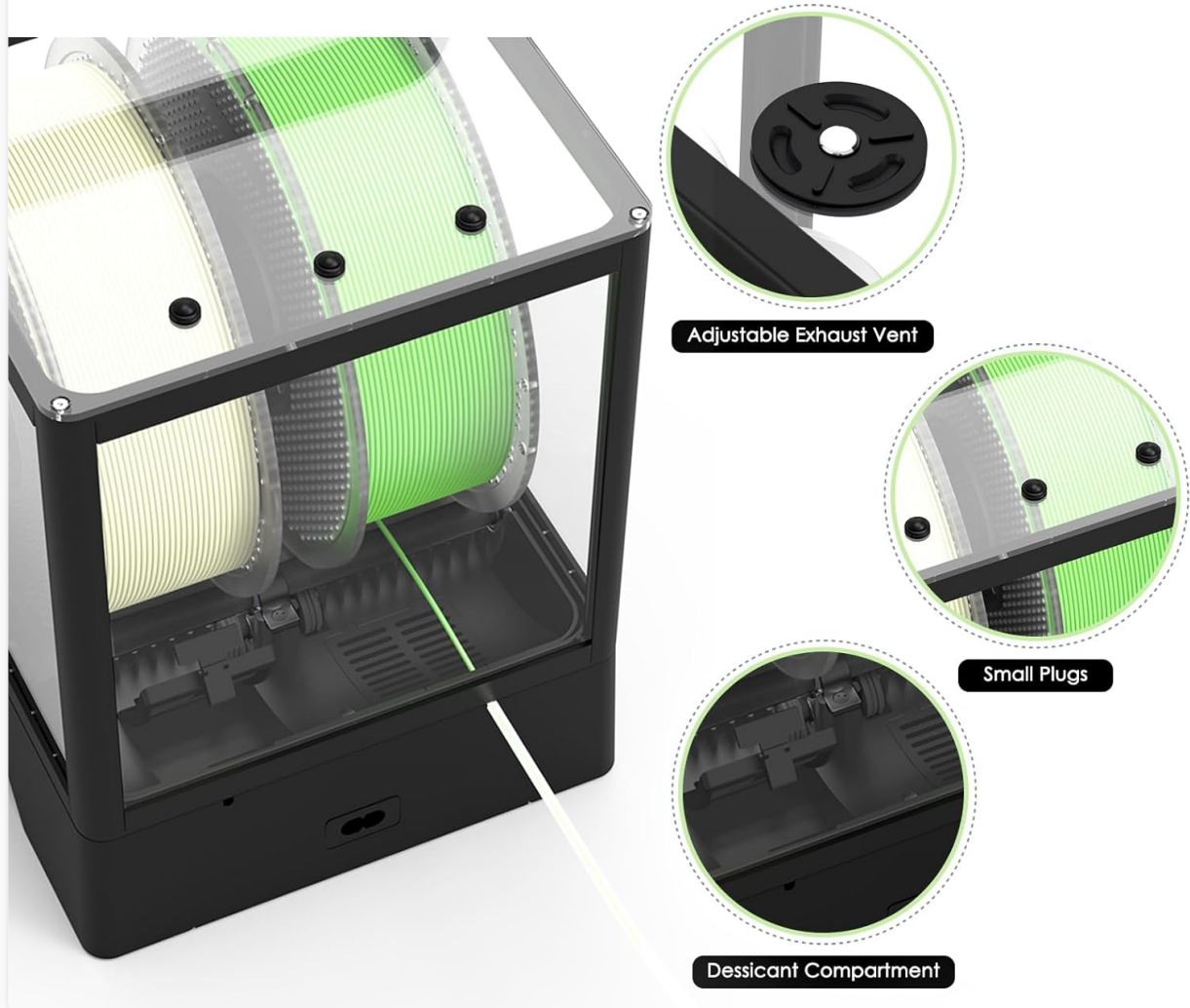


Figure 6: Filament feeding options from the dryer.

3.4 Official Product Videos

The best filament dryer with Auto-rotation-Eibos Polyphemus

Your browser does not support the video tag.

Video 1: An overview of the EIBOS Polyphemus filament dryer, highlighting its auto-rotation feature and benefits for 3D printing.

The FIRST filament dryer with AUTO-ROTATION-eibos polyphemus

Your browser does not support the video tag.

Video 2: Demonstrates the unique auto-rotation feature of the EIBOS Polyphemus, emphasizing its innovation in filament drying.

What makes eibos polyphemus filament dryer difference?

Your browser does not support the video tag.

Video 3: Explores the distinguishing features and advantages of the EIBOS Polyphemus filament dryer compared to other models.

Unboxing of Eibos 3d printer filament dryer Polyphemus!

Your browser does not support the video tag.

Video 4: A detailed unboxing experience of the EIBOS Polyphemus 3D printer filament dryer, showcasing its components.

About EIBOS easdry filament dryer- Accurate Temperature

Your browser does not support the video tag.

Video 5: Highlights the accurate temperature control capabilities of the EIBOS Easdry filament dryer.

4. MAINTENANCE AND STORAGE

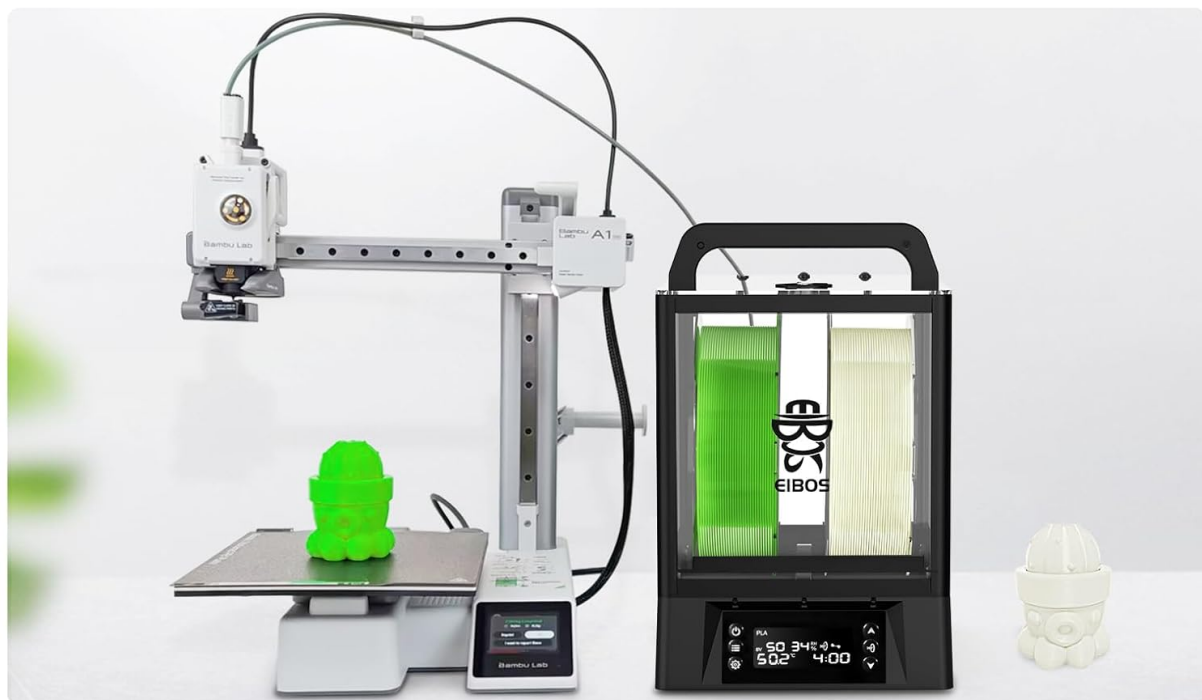
4.1 Storing Filament After Drying

After the drying process is complete, you can turn off the exhaust fan and use the provided rubber plugs to seal the ports for better drying conditions. The two compartments are designed for placing desiccants to maintain a dry environment for your filament long-term.

RECOMMEND OPTIMAL SETTING TIME & TEMPERATURE

compatible with 1.75mm 2.85mm 3mm Nylon, PLA, PETG, ABS, PC, TPU, PVA, ASA, PP,
meet all your drying needs

Filament	PLA	PVA	ABS	PETG	Nylon	PA	PC	TPU	ASA
Temperature	50°C	50°C	60°C	65°C	70°C	70°C	70°C	55°C	60°C
Time	4h	4h	2h	2h	12h	12h	8h	24h	24h



- * features customizable time and temperature settings with three memory slots (M1, M2, M3) for convenient and quick drying of specific filaments

Figure 7: Storage features for maintaining filament dryness.

4.2 Desiccant Management

Regularly check and replace or regenerate desiccants in the designated compartments to ensure continued moisture absorption. The dryer's heating capabilities can assist in regenerating certain types of desiccants.

5. TROUBLESHOOTING

If you encounter issues with your EIBOS Polyphemus, consider the following:

- **Inconsistent Drying/Temperature:** Ensure the magnetic plates are removed from the bottom of the removable boxes during active drying to allow proper air circulation. Verify that the selected temperature and time settings are appropriate for your filament type.
- **Filament Rotation Issues:** Check that spools are correctly seated on the rollers. If the auto-rotation is inconsistent, ensure the spare motor is properly installed or consider replacing it if necessary.
- **Humidity/Temperature Display Inaccuracy:** While the unit provides readings, external calibrated sensors can be used for verification if precise measurements are critical for your application.
- **Air Gaps/Sealing:** Ensure all panels and the lid are properly closed and sealed. The small plugs should be used for ports when not actively printing to maintain a dry environment.

6. SPECIFICATIONS

Attribute	Value
Product Dimensions	10.8 x 8 x 10.9 inches (10.8"D x 8"W x 10.9"H)
Item Weight	6.6 pounds
Brand	EIBOS
Material	Acrylonitrile Butadiene Styrene
Color	Black
Manufacturer	EIBOS
Input Voltage	110V-120V (US Plug)
Heating Power	130W PTC
Temperature Range	20°C to 80°C
Noise Level	35-36 dB

7. WARRANTY AND SUPPORT

For warranty information, technical support, or service inquiries, please contact EIBOS Official Store directly through their official channels or the retailer where the product was purchased.

Visit the [EIBOS Official Store](#) for more information.

