

- manuals.plus /
- › CP PLUS /
- › CP PLUS CP-T31A Smart Wi-fi Bulb Security Camera User Manual

CP PLUS CP-T31A

CP PLUS CP-T31A Smart Wi-fi Bulb Security Camera User Manual

Model: CP-T31A | Brand: CP PLUS

Introduction	What's in the Box	Safety Information	Setup	Operation	Maintenance
	Troubleshooting	Specifications	Warranty & Support		

1. INTRODUCTION

This manual provides detailed instructions for the installation, operation, and maintenance of your CP PLUS CP-T31A Smart Wi-fi Bulb Security Camera. This device offers 3MP video resolution, 360° view, two-way audio, motion tracking, and advanced night vision for comprehensive surveillance.



Figure 1: CP PLUS CP-T31A Smart Wi-fi Bulb Security Camera

2. WHAT'S IN THE BOX

Verify that all components are present in the package:

- CP PLUS CP-T31A Smart Wi-fi Bulb Security Camera
- Connector (likely an E27/B22 adapter if not integrated)
- User Manual (this document)

3. IMPORTANT SAFETY INFORMATION

- Ensure the power is off before installing or removing the camera.
- Install the camera in a standard E27 or B22 light bulb socket (adapter may be required and included).
- Do not expose the device to extreme temperatures, humidity, or water.
- Use only the power adapter and accessories specified by the manufacturer.
- Keep the device out of reach of children.
- This device is designed for indoor use.

4. SETUP GUIDE

4.1 Physical Installation

1. **Power Off:** Ensure the power supply to the light bulb socket is turned off at the main switch.
2. **Insert Camera:** Carefully screw the CP-T31A camera into a standard E27 or B22 light bulb socket. Ensure it is securely fastened.
3. **Power On:** Restore power to the light bulb socket. The camera will power on and initiate its startup sequence.



Figure 2: Front view of the CP-T31A camera, ready for installation.

4.2 App Installation and Pairing

The CP-T31A camera requires the Ezykam+ app for setup and remote control.

1. **Download App:** Download the "Ezykam+" app from the Apple App Store (for iOS devices) or Google Play Store (for Android devices).
2. **Register Account:** Open the Ezykam+ app and follow the on-screen instructions to register a new user account or log in if you already have one.

3. Add Device:

- On the app's home page, tap the "+" icon to add a new device.
- Select the appropriate camera model (CP-T31A) from the list.
- Follow the in-app prompts to connect the camera to your 2.4GHz Wi-Fi network. (Note: 5GHz Wi-Fi is not supported).
- The app may require you to scan a QR code on the camera or generate a QR code on your phone for the camera to scan. Position your phone's screen in front of the camera lens.
- Wait for a voice prompt from the camera confirming successful connection and a steady blue indicator light.



Figure 3: Visual guide for Ezykam+ app integration steps.

5. OPERATION

Once set up, you can control and monitor your CP-T31A camera using the Ezykam+ app.

5.1 Live View and 360° Pan/Tilt

Access the live video feed through the Ezykam+ app. Use the on-screen controls to remotely pan (horizontal) and tilt (vertical) the camera lens, providing a full 360° coverage of the monitored area.



Figure 4: Illustrates the 360-degree viewing capability of the camera.

5.2 Two-Way Talk

The camera features a built-in microphone and speaker. Tap the microphone icon in the app to speak through the camera, and listen to audio from the camera's location. This enables real-time communication with individuals near the camera.

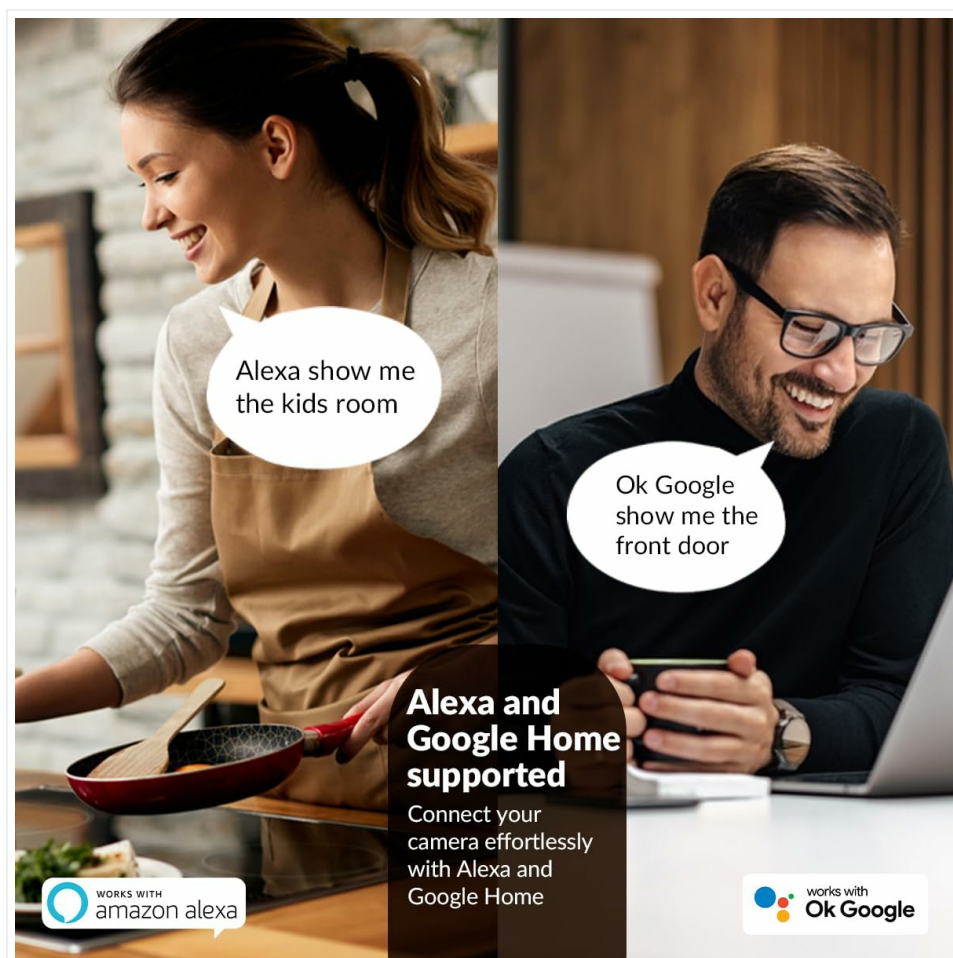


Figure 5: Demonstrates the two-way talk functionality for interactive communication.

5.3 Motion Detection and Tracking

The CP-T31A can detect human movement and send instant alerts to your smartphone. It also supports motion

tracking, allowing the camera to automatically follow detected subjects within its field of view.

- **Enable Alerts:** In the app settings, enable motion detection alerts to receive notifications.
- **Motion Tracking:** Activate motion tracking in the app to have the camera automatically adjust its view to follow moving objects.
- **Sensitivity:** Adjust motion detection sensitivity to minimize false alarms.

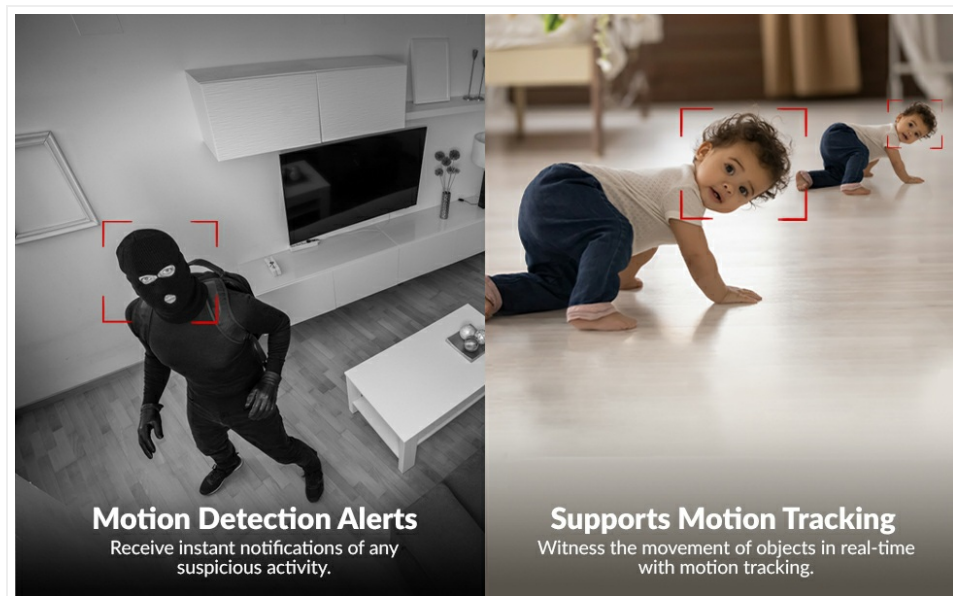


Figure 6: Illustrates motion detection alerts and motion tracking capabilities.

5.4 Night Vision

The camera is equipped with advanced IR night vision, providing clear surveillance up to 15 meters in low-light or complete darkness. Night vision activates automatically when ambient light levels are insufficient.

5.5 Privacy Mode

To ensure privacy, activate the Privacy Mode through the Ezykam+ app. This feature physically blocks the camera lens and stops recording, preventing any visual surveillance when not desired.

5.6 Smart Home Integration

The CP-T31A camera supports integration with Amazon Alexa and Google Home. Link your Ezykam+ account to your smart home assistant to control the camera using voice commands, such as viewing the live feed on compatible smart displays.

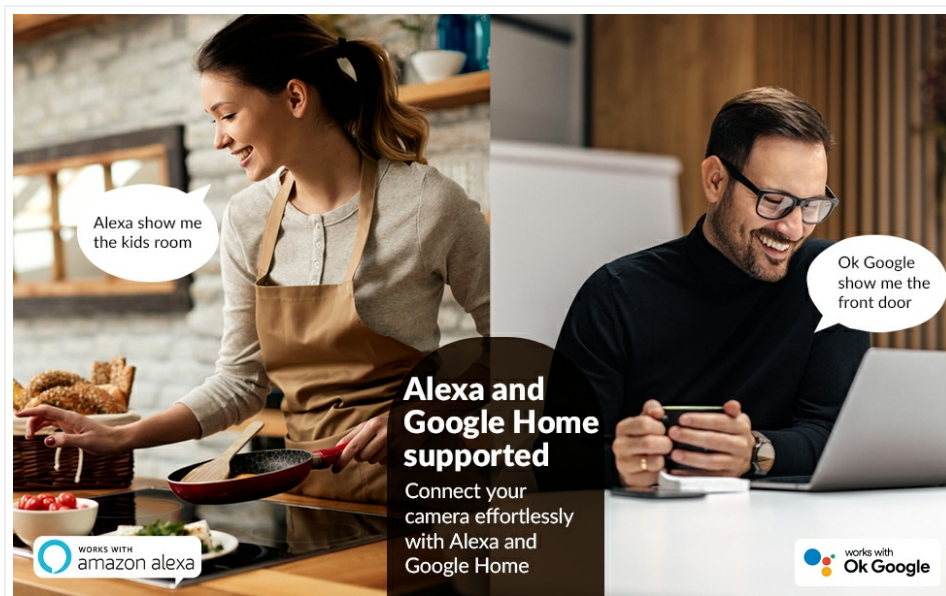


Figure 7: Shows compatibility with Amazon Alexa and Google Home for voice control.

6. MAINTENANCE

- **Cleaning:** Use a soft, dry cloth to clean the camera lens and body. Do not use liquid cleaners or aerosols.
- **Firmware Updates:** Regularly check the Ezykam+ app for available firmware updates to ensure optimal performance and security.
- **Storage:** If using a Micro SD card for local storage (up to 128 GB, not included), ensure it is properly inserted and formatted via the app. Periodically review and manage stored footage.

7. TROUBLESHOOTING

Problem	Possible Solution
Camera not connecting to Wi-Fi	<ul style="list-style-type: none"> ◦ Ensure your Wi-Fi network is 2.4GHz. 5GHz networks are not supported. ◦ Check Wi-Fi password for accuracy. ◦ Move the camera closer to the Wi-Fi router. ◦ Restart the camera and router.
No video feed / Camera offline	<ul style="list-style-type: none"> ◦ Verify the camera is powered on and the light bulb socket has power. ◦ Check your internet connection. ◦ Restart the camera by turning off and on the power supply. ◦ Re-pair the camera with the app if the issue persists.
Motion detection alerts not received	<ul style="list-style-type: none"> ◦ Ensure motion detection is enabled in the Ezykam+ app settings. ◦ Check app notification settings on your smartphone. ◦ Adjust motion detection sensitivity.
Two-way audio issues	<ul style="list-style-type: none"> ◦ Ensure your smartphone's microphone is enabled for the Ezykam+ app. ◦ Check camera volume settings in the app. ◦ Minimize background noise for clearer communication.

8. SPECIFICATIONS

Feature	Detail
Model	CP-T31A
Resolution	3 MP (1296p)
View Angle	360° Pan, 109° Angle of View
Connectivity	Wi-Fi (2.4GHz only)
Two-Way Audio	Supported
Motion Detection	Human Body Detection, Motion Tracking
Night Vision	IR Distance up to 15 meters
Storage	Micro SD Card Slot (Up to 128 GB)
Smart Home Compatibility	Amazon Alexa, Google Home
Indoor/Outdoor Usage	Indoor
Power Source	Corded Electric
Product Dimensions	8.2 x 8.2 x 16.8 cm
Item Weight	218 g


9. WARRANTY & SUPPORT

For warranty information, please refer to the warranty card included with your product or visit the official CP PLUS website. For technical support or assistance, please contact CP PLUS customer service:

- **Technical Support Dial:** +91-8800952952 | +91-120-4555666
- **Email:** customer_care@cpplusworld.com
- **Manufacturer:** ADITYA INFOTECH






Additional support resources may be available on the [CP PLUS Store on Amazon](#).

Related Documents - CP-T31A



[CP PLUS ezykam+ Wi-Fi Camera Quick Operation Guide](#)

A comprehensive guide to setting up and using your CP PLUS ezykam+ Wi-Fi camera, including installation, app usage, troubleshooting, and technical specifications.

	<p>CP-EBC-1073-K Body Worn Camera User Manual</p> <p>Comprehensive user manual for the CP-EBC-1073-K body worn camera, detailing its features, structure, basic operations, device usage, and setup configurations for law enforcement and security professionals.</p>
	<p>CP PLUS ezykam+ Quick Operation Guide for CP-E51AR/E81AR</p> <p>Quick start guide for CP PLUS ezykam+ Wi-Fi cameras (models CP-E51AR and E81AR), covering setup, features, technical specifications, and troubleshooting.</p>
	<p>CP PLUS ezyKam+ E27A Quick Operation Guide</p> <p>A quick operation guide for the CP PLUS ezyKam+ E27A Wi-Fi Camera, covering setup, FAQs, system requirements, and technical specifications.</p>
	<p>CP PLUS 4G Router CP-XR-DE21-S Quick Installation Guide</p> <p>A quick installation guide for the CP PLUS 4G Router CP-XR-DE21-S, covering package contents, LED indicators, interface descriptions, working environments, installation steps, router configuration, and network settings.</p>
	<p>CP PLUS ezyKam+ E28A Wi-Fi Camera: Quick Operation Guide</p> <p>Comprehensive quick operation guide for the CP PLUS ezyKam+ E28A Wi-Fi camera, covering setup, FAQs, system requirements, technical specifications, and integration with Alexa and Google Assistant.</p>



[CP PLUS Smart Home Security Cameras and Devices Catalog](#)

Explore the comprehensive range of CP PLUS smart home security solutions, including high-definition Wi-Fi and 4G cameras, intelligent doorbells, advanced smart locks, portable Mi-Fi routers, and monitors, designed for enhanced home security and convenience.

lang:en score:11 filesize: 1.34 M page_count: 12 document date: 2024-01-02